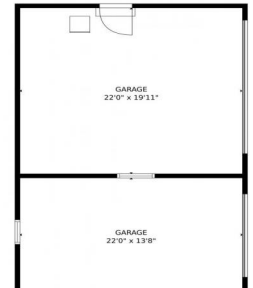





8959 South Hillview Road, Morrison, CO 80465 - 1st Level Garage



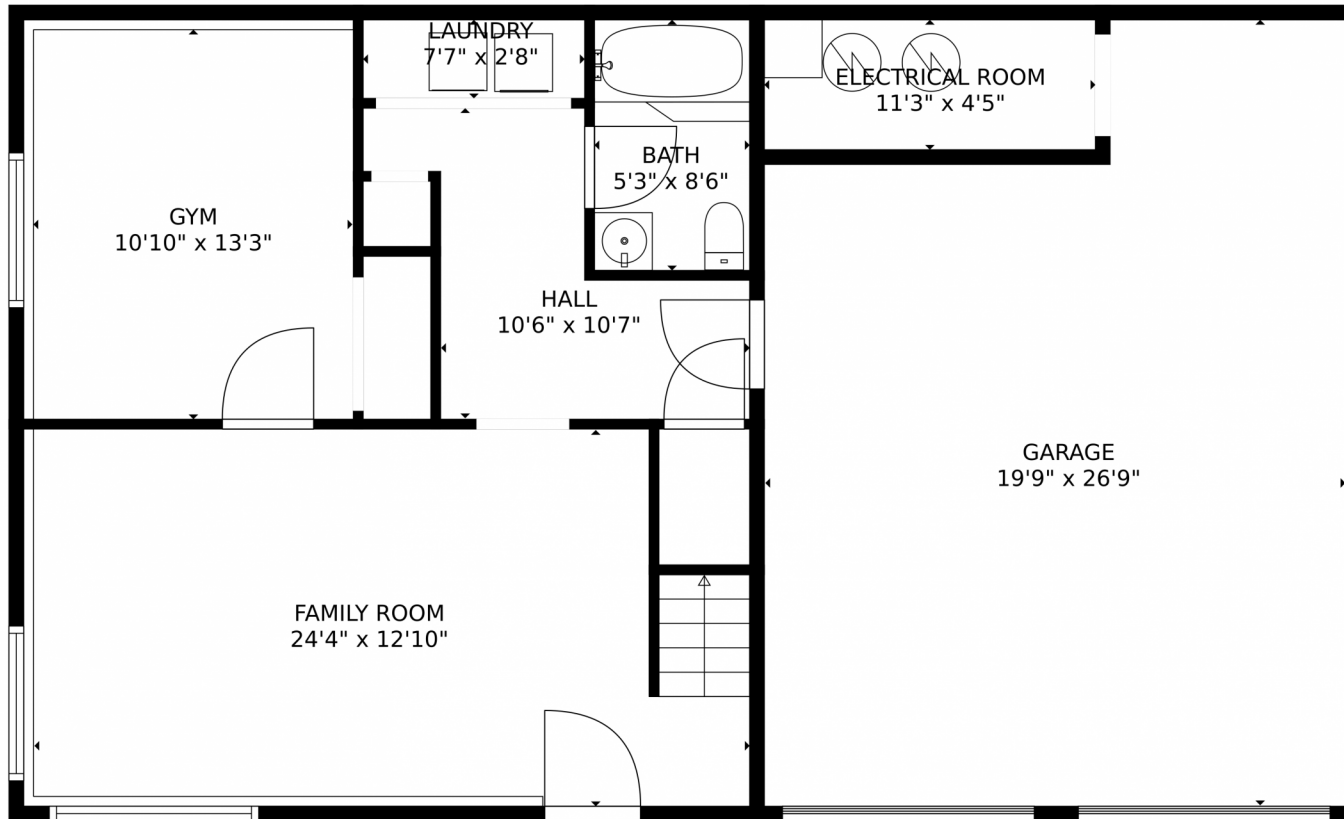
 Single Family  3612 SQFT



Mark Hull
303-842-7201
Markhullsells@gmail.com



8959 South Hillview Road, Morrison, CO 80465 – 1st Level



TOTAL: 2943 sq. ft

Below Ground: 665 sq. ft, FLOOR 2: 0 sq. ft, FLOOR 3: 1349 sq. ft, FLOOR 4: 929 sq. ft
EXCLUDED AREAS: GARAGE: 1211 sq. ft, ELECTRICAL ROOM: 50 sq. ft, PORCH: 638 sq. ft,
BALCONY: 83 sq. ft, OPEN TO BELOW: 360 sq. ft

MEASUREMENTS CALCULATED BY V1Photos.com ARE DEEMED HIGHLY RELIABLE BUT NOT GUARANTEED.



Disclaimer: Sizes and Dimensions are Approximate, Actual May Vary.



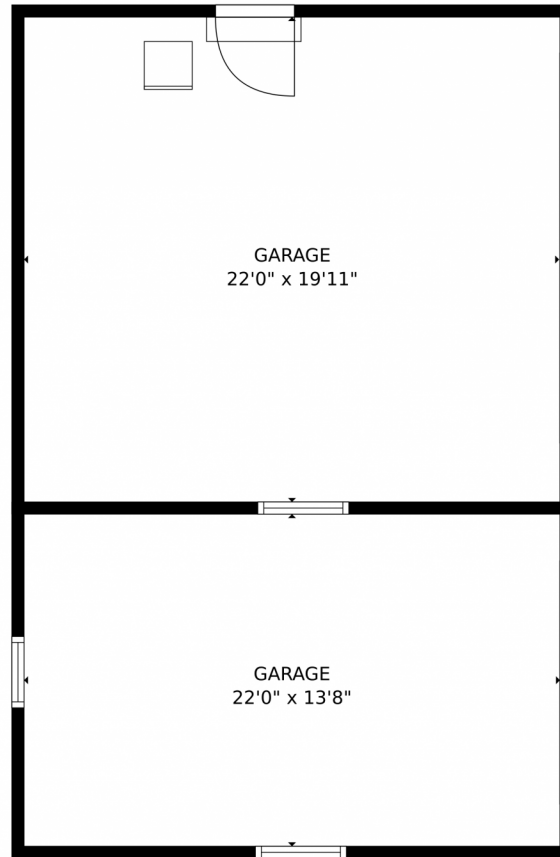
Mark Hull
303-842-7201
Markhullsells@gmail.com



Scan code
for more
property
details



8959 South Hillview Road, Morrison, CO 80465 – 1st Level Garage



TOTAL: 2943 sq. ft
Below Ground: 665 sq. ft, FLOOR 2: 0 sq. ft, FLOOR 3: 1349 sq. ft, FLOOR 4: 929 sq. ft
EXCLUDED AREAS: GARAGE: 1211 sq. ft, ELECTRICAL ROOM: 50 sq. ft, PORCH: 638 sq. ft,
BALCONY: 83 sq. ft, OPEN TO BELOW: 360 sq. ft
MEASUREMENTS CALCULATED BY V1Photos.com ARE DEEMED HIGHLY RELIABLE BUT NOT GUARANTEED.



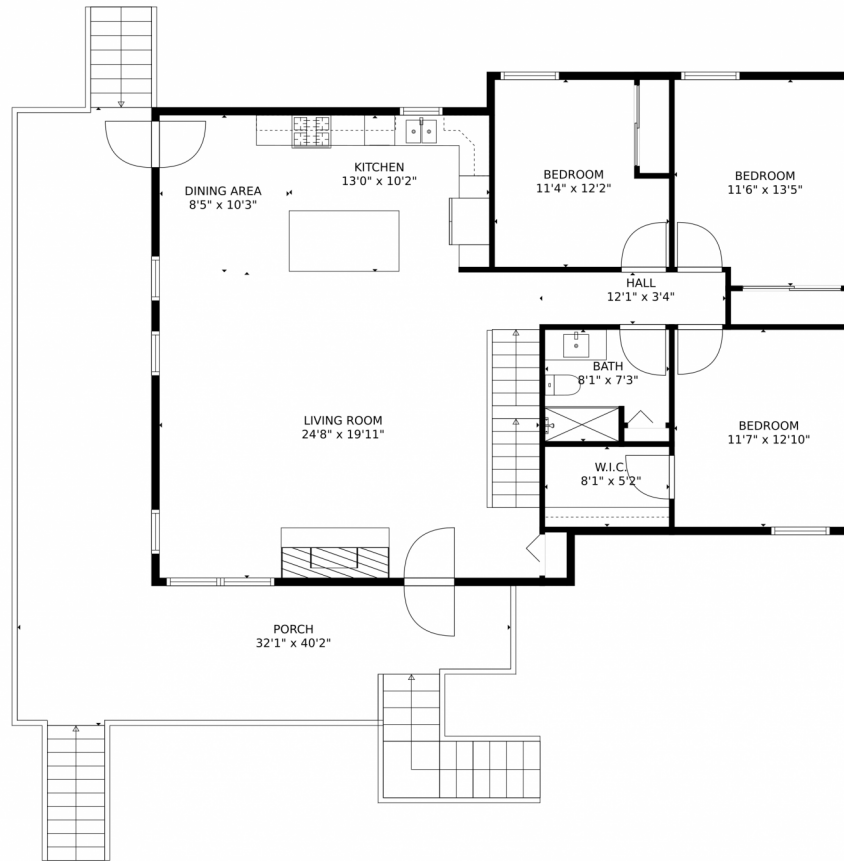
Disclaimer: Sizes and Dimensions are Approximate, Actual May Vary.



Mark Hull
303-842-7201
Markhullsells@gmail.com



8959 South Hillview Road, Morrison, CO 80465 – Main



TOTAL: 2943 sq. ft
Below Ground: 665 sq. ft, FLOOR 2: 0 sq. ft, FLOOR 3: 1349 sq. ft, FLOOR 4: 929 sq. ft
EXCLUDED AREAS: GARAGE: 1211 sq. ft, ELECTRICAL ROOM: 50 sq. ft, PORCH: 638 sq. ft,
BALCONY: 83 sq. ft, OPEN TO BELOW: 360 sq. ft

MEASUREMENTS CALCULATED BY V1Photos.com ARE DEEMED HIGHLY RELIABLE BUT NOT GUARANTEED.



Disclaimer: Sizes and Dimensions are Approximate, Actual May Vary.



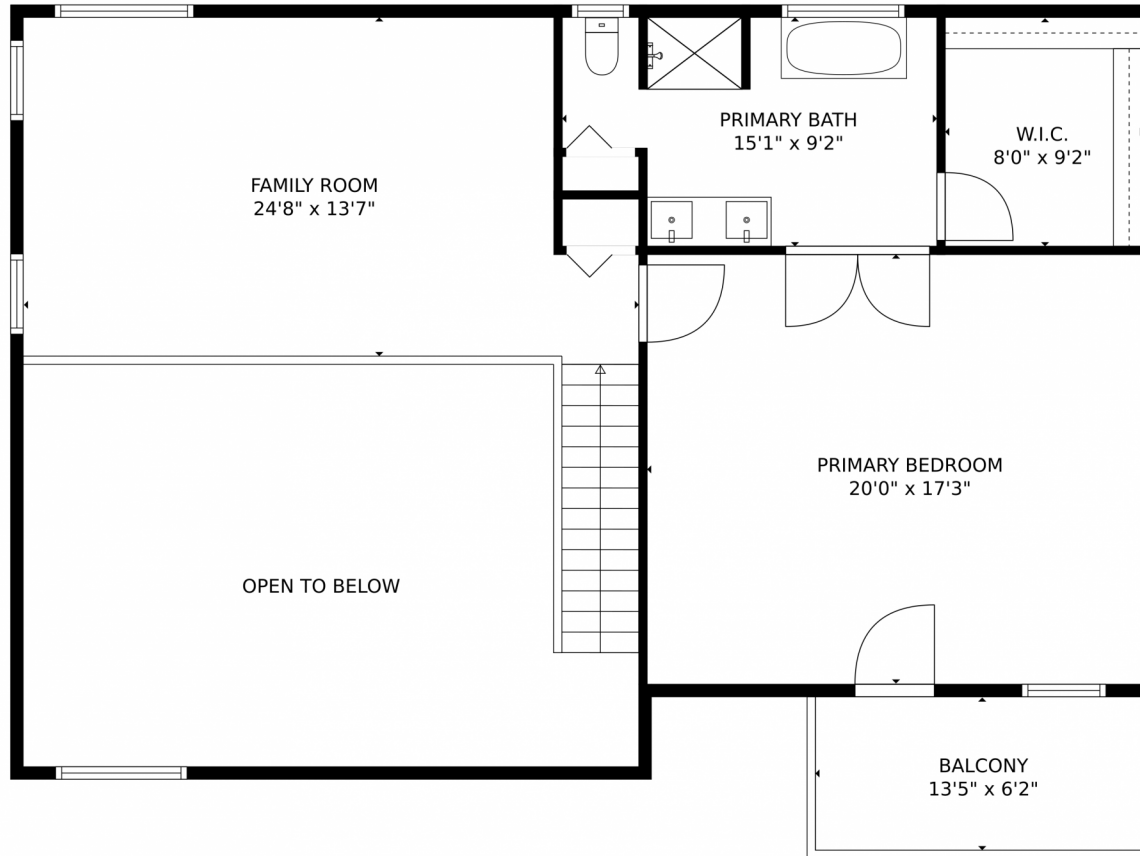
Mark Hull
303-842-7201
Markhullsells@gmail.com



Scan code
for more
property
details



8959 South Hillview Road, Morrison, CO 80465 – 3rd Level



TOTAL: 2943 sq. ft
Below Ground: 665 sq. ft, FLOOR 2: 0 sq. ft, FLOOR 3: 1349 sq. ft, FLOOR 4: 929 sq. ft
EXCLUDED AREAS: GARAGE: 1211 sq. ft, ELECTRICAL ROOM: 50 sq. ft, PORCH: 638 sq. ft,
BALCONY: 83 sq. ft, OPEN TO BELOW: 360 sq. ft

MEASUREMENTS CALCULATED BY V1Photos.com ARE DEEMED HIGHLY RELIABLE BUT NOT GUARANTEED.



Disclaimer: Sizes and Dimensions are Approximate, Actual May Vary.



Mark Hull
303-842-7201
Markhullsells@gmail.com



8959 South Hillview Road, Morrison, CO 80465 – All Levels



TOTAL: 2943 sq. ft
Below Ground: 665 sq. ft, FLOOR 2: 0 sq. ft, FLOOR 3: 1349 sq. ft, FLOOR 4: 929 sq. ft
EXCLUDED AREAS: GARAGE: 1211 sq. ft, ELECTRICAL ROOM: 50 sq. ft, PORCH: 638 sq. ft,
BALCONY: 83 sq. ft, OPEN TO BELOW: 360 sq. ft

MEASUREMENTS CALCULATED BY V1Photos.com ARE DEEMED HIGHLY RELIABLE BUT NOT GUARANTEED.



Disclaimer: Sizes and Dimensions are Approximate, Actual May Vary.



Mark Hull
303-842-7201
Markhullsells@gmail.com

