



Single Family



2025 SQFT



3 Beds



2 Baths



8.75 Acre

PROPERTY DETAILS

Welcome to your serene oasis! This charming move-in-ready home is surrounded by nature on an 8+ acre property with a babbling brook. The remodeled modern farmhouse interior exudes comfort and charm, with hardwood floors, a cozy fireplace, and a stunning kitchen with granite countertops. Enjoy the natural surroundings on the spacious covered deck or in the hot tub under the stars. The upstairs features a spacious primary suite with a walk-in closet and a lovely bathroom. Outside, you'll find a fenced area for pets, a private creek, and plenty of outdoor living space. The property also includes a two-car carport and a storage/workshop building. Close to trails and downtown Evergreen. A rare find for tranquil mountain living with modern comforts. No HOA.



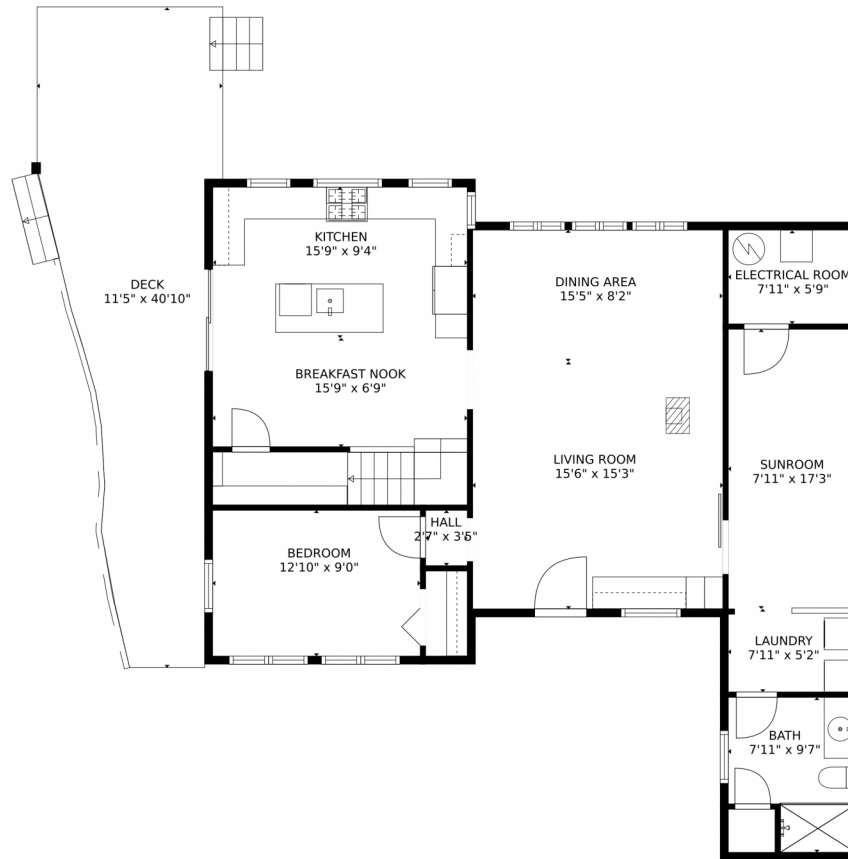
Pandora & John Erlandson
303-888-6298
pandora@pandorajohnproperties.com
<https://www.pandorajohnproperties.com>



Scan code
for more
property
details



32696 Saint Moritz Drive, Evergreen, CO 80439 – main level



TOTAL: 1897 sq. ft
Below Ground: 1093 sq. ft, FLOOR 2: 473 sq. ft, FLOOR 3: 237 sq. ft, FLOOR 4: 94 sq. ft
EXCLUDED AREAS: ELECTRICAL ROOM: 46 sq. ft, DECK: 641 sq. ft, LOW CEILING: 97 sq. ft,
OPEN TO BELOW: 234 sq. ft

MEASUREMENTS CALCULATED BY V1Photos.com ARE DEEMED HIGHLY RELIABLE BUT NOT GUARANTEED.



Disclaimer: Sizes and Dimensions are Approximate, Actual May Vary.



Pandora & John Erlandson

303-888-6298

pandora@pandorajohnproperties.com

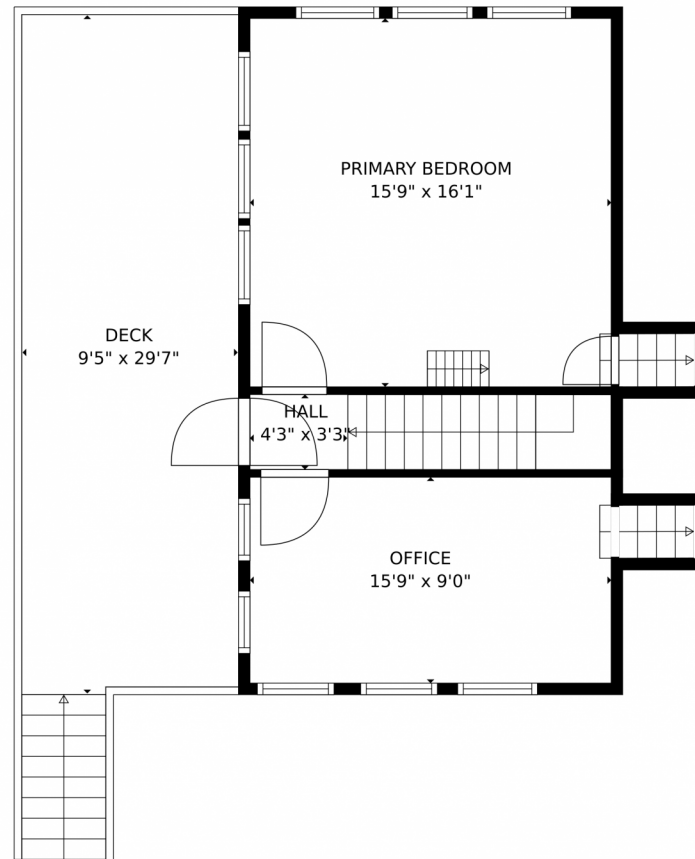
<https://www.pandorajohnproperties.com>



Scan code
for more
property
details



32696 Saint Moritz Drive, Evergreen, CO 80439 – 2nd level



TOTAL: 1897 sq. ft
Below Ground: 1093 sq. ft, FLOOR 2: 473 sq. ft, FLOOR 3: 237 sq. ft, FLOOR 4: 94 sq. ft
EXCLUDED AREAS: ELECTRICAL ROOM: 46 sq. ft, DECK: 641 sq. ft, LOW CEILING: 97 sq. ft,
OPEN TO BELOW: 234 sq. ft

MEASUREMENTS CALCULATED BY V1Photos.com ARE DEEMED HIGHLY RELIABLE BUT NOT GUARANTEED.



Disclaimer: Sizes and Dimensions are Approximate, Actual May Vary.



Pandora & John Erlandson

303-888-6298

pandora@pandorajohnproperties.com

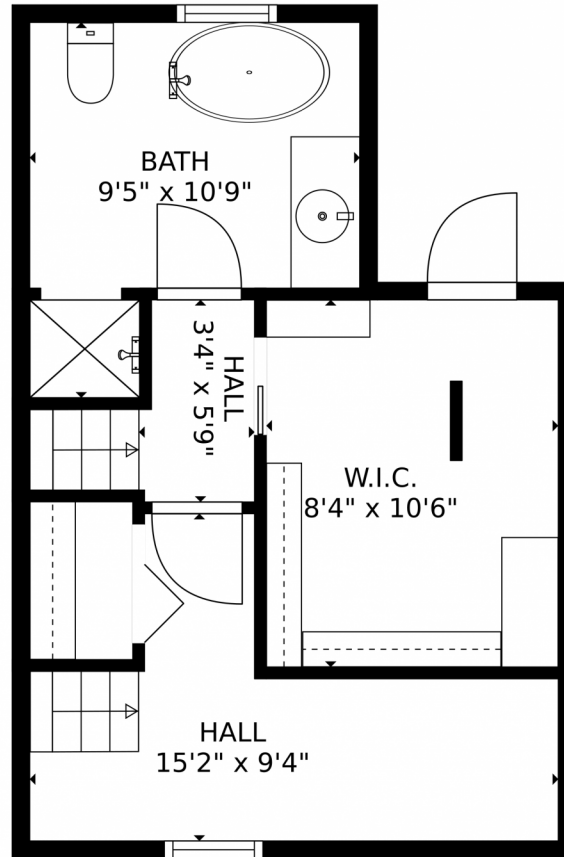
<https://www.pandorajohnproperties.com>



Scan code
for more
property
details



32696 Saint Moritz Drive, Evergreen, CO 80439 – 3rd level



TOTAL: 1897 sq. ft
Below Ground: 1093 sq. ft, FLOOR 2: 473 sq. ft, FLOOR 3: 237 sq. ft, FLOOR 4: 94 sq. ft
EXCLUDED AREAS: ELECTRICAL ROOM: 46 sq. ft, DECK: 641 sq. ft, LOW CEILING: 97 sq. ft,
OPEN TO BELOW: 234 sq. ft

MEASUREMENTS CALCULATED BY V1Photos.com ARE DEEMED HIGHLY RELIABLE BUT NOT GUARANTEED.



Disclaimer: Sizes and Dimensions are Approximate, Actual May Vary.



Pandora & John Erlandson

303-888-6298

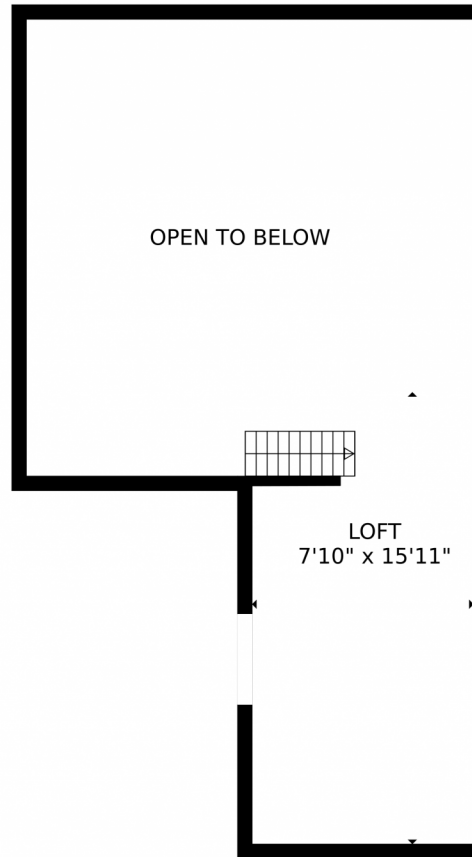
pandora@pandorajohnproperties.com

<https://www.pandorajohnproperties.com>



Scan code
for more
property
details





TOTAL: 1897 sq. ft
Below Ground: 1093 sq. ft, FLOOR 2: 473 sq. ft, FLOOR 3: 237 sq. ft, FLOOR 4: 94 sq. ft
EXCLUDED AREAS: ELECTRICAL ROOM: 46 sq. ft, DECK: 641 sq. ft, LOW CEILING: 97 sq. ft,
OPEN TO BELOW: 234 sq. ft

MEASUREMENTS CALCULATED BY V1Photos.com ARE DEEMED HIGHLY RELIABLE BUT NOT GUARANTEED.



Disclaimer: Sizes and Dimensions are Approximate, Actual May Vary.



Pandora & John Erlandson

303-888-6298

pandora@pandorajohnproperties.com

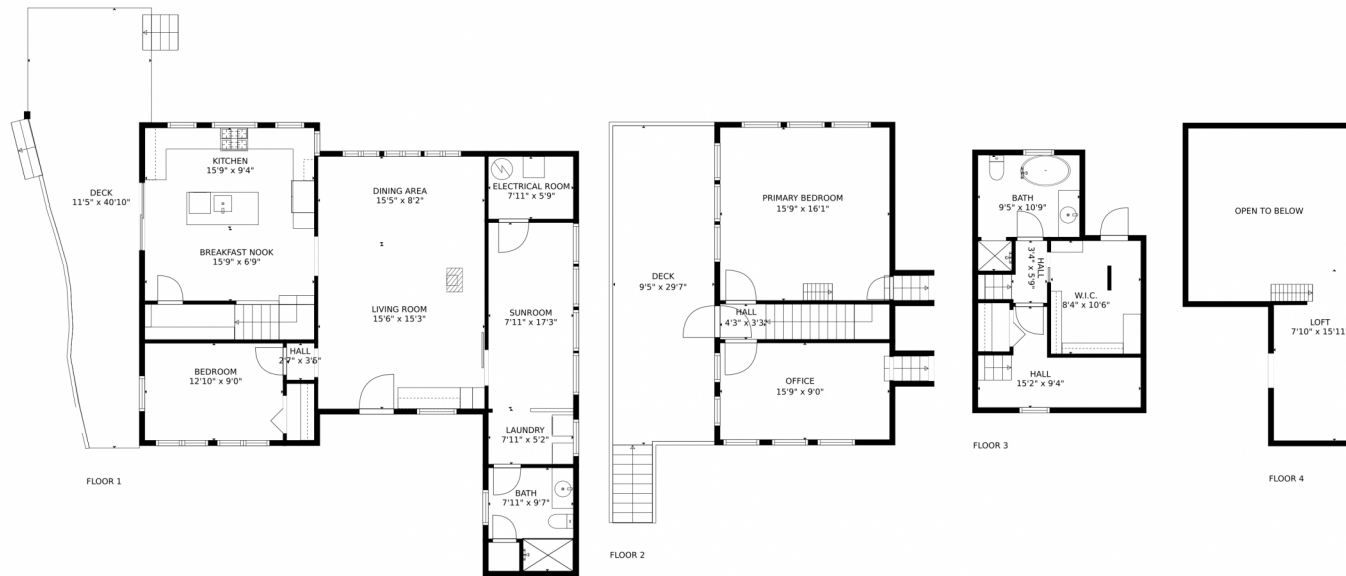
<https://www.pandorajohnproperties.com>



Scan code
for more
property
details



32696 Saint Moritz Drive, Evergreen, CO 80439 – all levels



TOTAL: 1897 sq. ft
Below Ground: 1093 sq. ft, FLOOR 2: 473 sq. ft, FLOOR 3: 237 sq. ft, FLOOR 4: 94 sq. ft
EXCLUDED AREAS: ELECTRICAL ROOM: 46 sq. ft, DECK: 641 sq. ft, LOW CEILING: 97 sq. ft,
OPEN TO BELOW: 234 sq. ft

MEASUREMENTS CALCULATED BY V1Photos.com ARE DEEMED HIGHLY RELIABLE BUT NOT GUARANTEED.



Disclaimer: Sizes and Dimensions are Approximate, Actual May Vary.



Pandora & John Erlandson
303-888-6298
pandora@pandorajohnproperties.com
<https://www.pandorajohnproperties.com>



Scan code
for more
property
details

