



821 Parkdale Place
 Erie, CO 80516
 COMMUNITY: Vista Pointe

MLS # 7167014
 PRICE \$925,000



Single Family



4520 SQFT



3 Beds



2/1 Baths



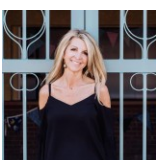
4 Car



0.33 Acre

PROPERTY DETAILS

Welcome to your serene sanctuary in Vista Pointe, Erie. This meticulously maintained home offers modern comfort and outdoor tranquility. Enjoy incredible views of the front range from your covered front porch. The open floor plan features a spacious kitchen with newer appliances and granite counters. The main floor study boasts stunning built-in features. Upstairs, you'll find a large loft, primary suite, and additional bedrooms. The backyard is an oasis with a captivating water feature, koi pond, and built-in outdoor kitchen. Escape the everyday and experience Colorado living at its finest.



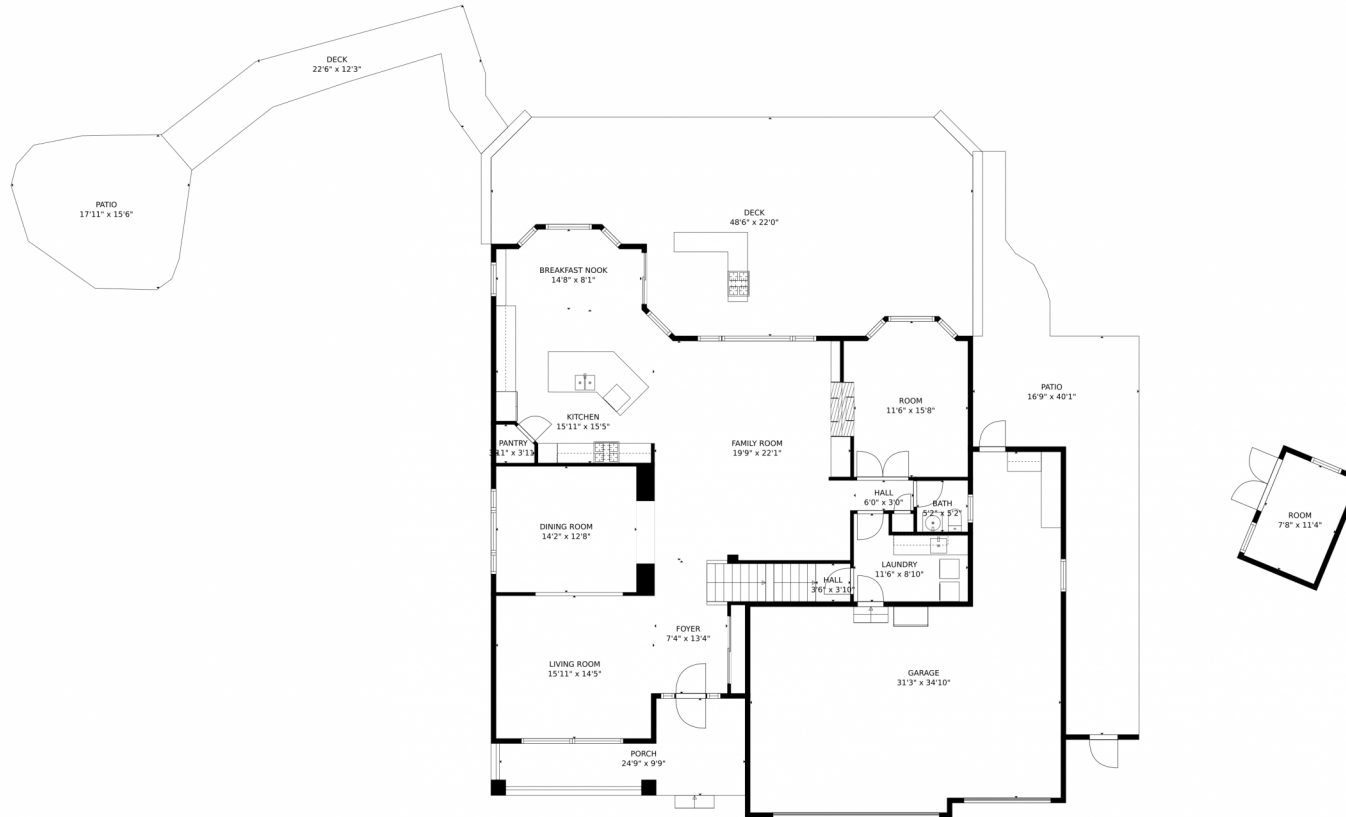
Christy Hepp
 303-910-5393
 cnishi1068@msn.com
<https://christysellscolorado.com>



Scan code
 for more
 property
 details



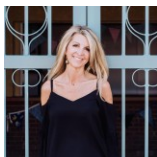
821 Parkdale Place, Erie, CO 80516 – Main Level



TOTAL: 4172 sq. ft
Below Ground: 1043 sq. ft, FLOOR 2: 1673 sq. ft, FLOOR 3: 1456 sq. ft
EXCLUDED AREAS: GARAGE: 770 sq. ft, PORCH: 174 sq. ft, DECK: 1058 sq. ft,
PATIO: 720 sq. ft, LOW CEILING: 132 sq. ft, OPEN TO BELOW: 117 sq. ft
MEASUREMENTS CALCULATED BY V1Photos.com ARE DEEMED HIGHLY RELIABLE BUT NOT GUARANTEED.



Disclaimer: Sizes and Dimensions are Approximate, Actual May Vary.



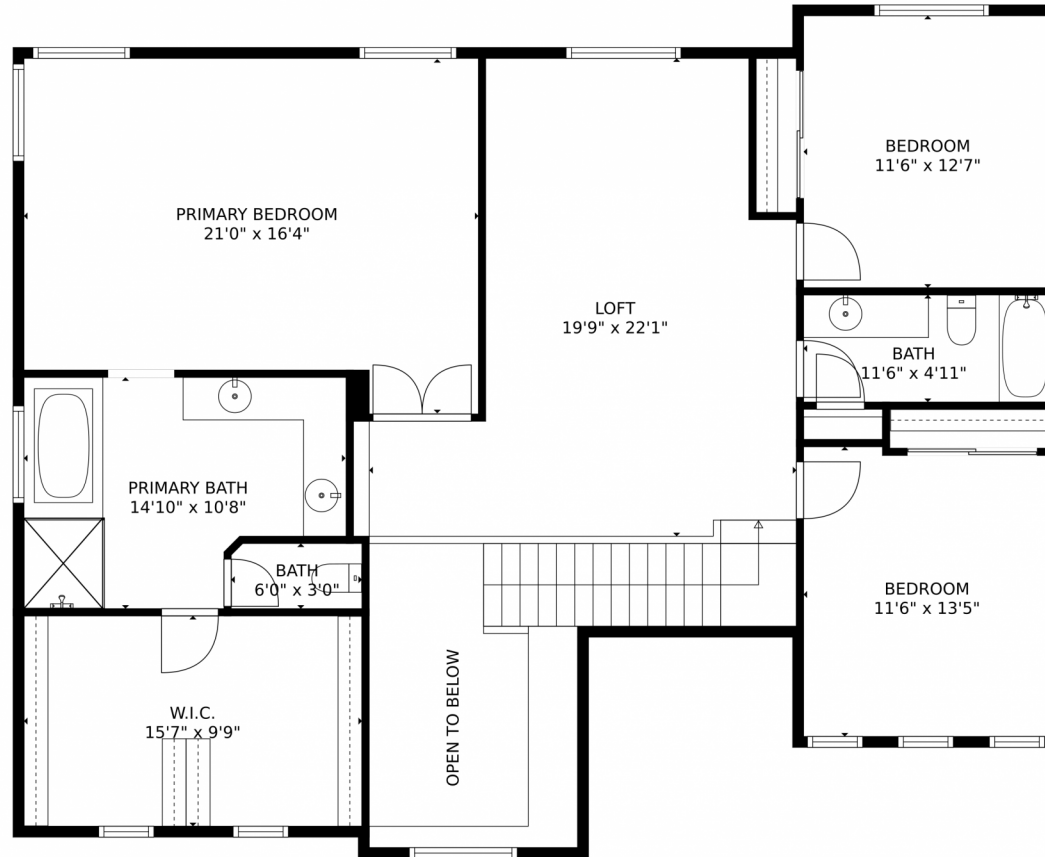
Christy Hepp
303-910-5393
cnishi1068@msn.com
<https://christysellscolorado.com>



Scan code
for more
property
details



821 Parkdale Place, Erie, CO 80516 – Upper Level



TOTAL: 4172 sq. ft
Below Ground: 1043 sq. ft, FLOOR 2: 1673 sq. ft, FLOOR 3: 1456 sq. ft
EXCLUDED AREAS: GARAGE: 770 sq. ft, PORCH: 174 sq. ft, DECK: 1058 sq. ft,
PATIO: 720 sq. ft, LOW CEILING: 132 sq. ft, OPEN TO BELOW: 117 sq. ft
MEASUREMENTS CALCULATED BY V1Photos.com ARE DEEMED HIGHLY RELIABLE BUT NOT GUARANTEED.

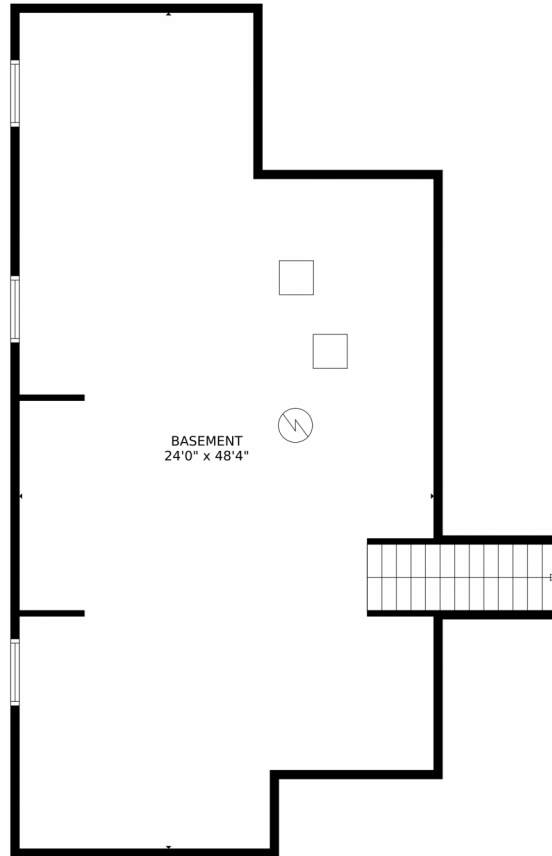
Disclaimer: Sizes and Dimensions are Approximate, Actual May Vary.



Christy Hepp
303-910-5393
cnishi1068@msn.com
<https://christysellscolorado.com>



821 Parkdale Place, Erie, CO 80516 – Lower Level



TOTAL: 4172 sq. ft
Below Ground: 1043 sq. ft, FLOOR 2: 1673 sq. ft, FLOOR 3: 1456 sq. ft
EXCLUDED AREAS: GARAGE: 770 sq. ft, PORCH: 174 sq. ft, DECK: 1058 sq. ft,
PATIO: 720 sq. ft, LOW CEILING: 132 sq. ft, OPEN TO BELOW: 117 sq. ft
MEASUREMENTS CALCULATED BY V1Photos.com ARE DEEMED HIGHLY RELIABLE BUT NOT GUARANTEED.



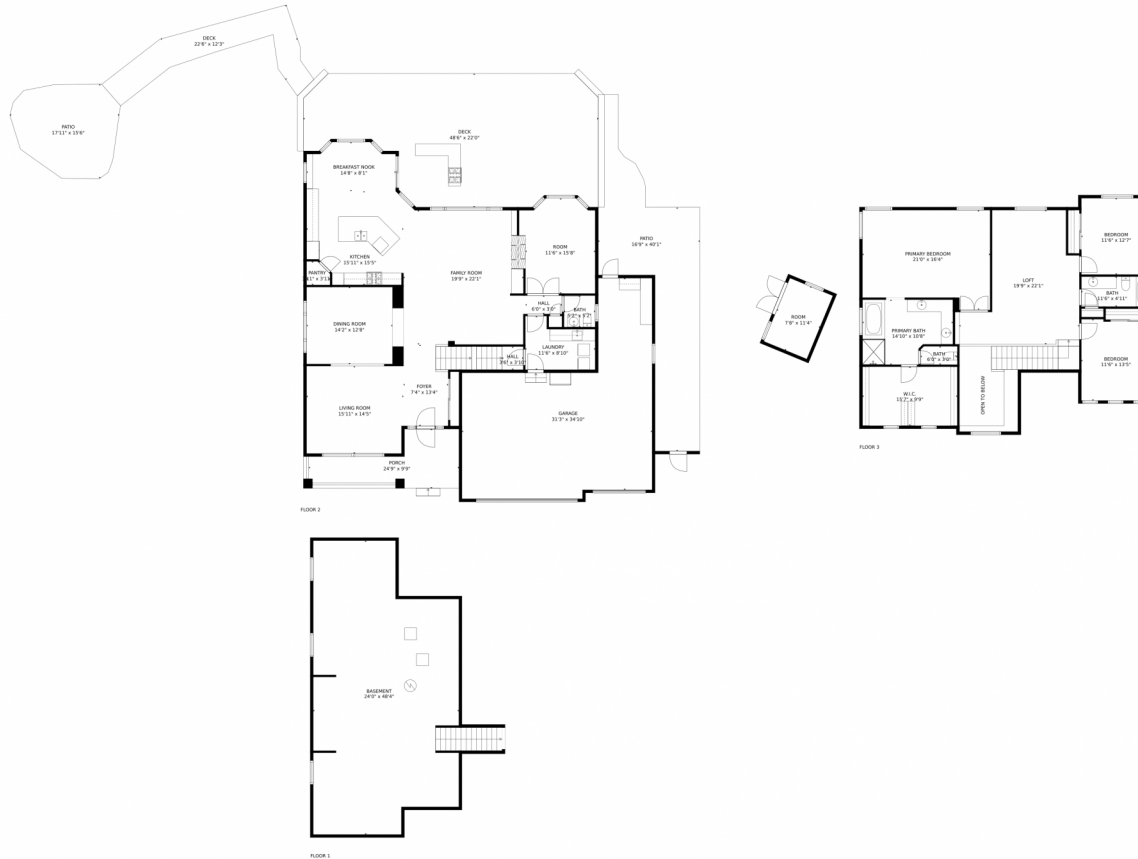
Disclaimer: Sizes and Dimensions are Approximate, Actual May Vary.



Christy Hepp
303-910-5393
cnishi1068@msn.com
<https://christysellscolorado.com>



821 Parkdale Place, Erie, CO 80516 – All Levels



TOTAL: 4172 sq. ft
Below Ground: 1043 sq. ft, FLOOR 2: 1673 sq. ft, FLOOR 3: 1456 sq. ft
EXCLUDED AREAS: GARAGE: 770 sq. ft, PORCH: 174 sq. ft, DECK: 1058 sq. ft,
PATIO: 720 sq. ft, LOW CEILING: 132 sq. ft, OPEN TO BELOW: 117 sq. ft
MEASUREMENTS CALCULATED BY V1Photos.COM ARE DEEMED HIGHLY RELIABLE BUT NOT GUARANTEED.



Disclaimer: Sizes and Dimensions are Approximate, Actual May Vary.



Christy Hepp
303-910-5393
cnishi1068@msn.com
<https://christysellscolorado.com>

