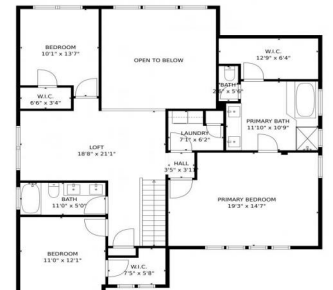


1072 Little Grove Court, Longmont, CO 80503 - Upper Level





 Single Family  2472 SQFT

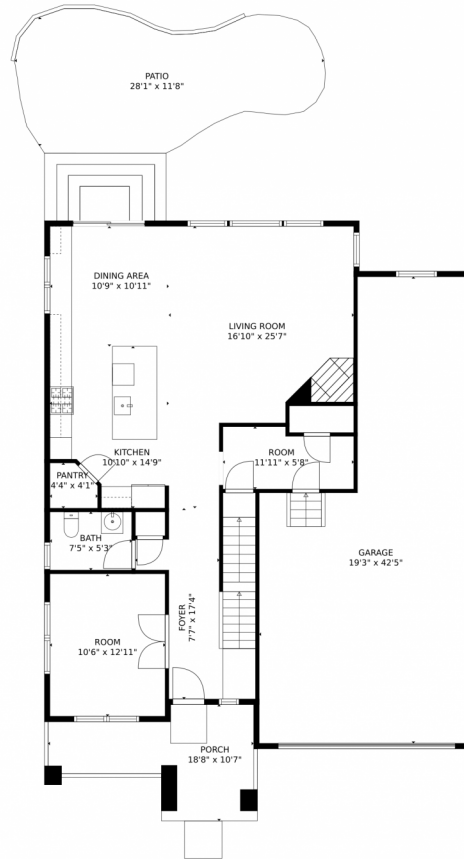


Katie Robinson  
970-430-9630  
katierobinson@windermere.com

Scan code for more property details



# 1072 Little Grove Court, Longmont, CO 80503 – Main Level



**TOTAL: 2286 sq. ft**  
Below Ground: 0 sq. ft, FLOOR 2: 1032 sq. ft, FLOOR 3: 1254 sq. ft  
EXCLUDED AREAS: BASEMENT: 970 sq. ft, ELECTRICAL ROOM: 62 sq. ft, GARAGE: 642 sq. ft,  
PORCH: 137 sq. ft, PATIO: 285 sq. ft, OPEN TO BELOW: 229 sq. ft

MEASUREMENTS CALCULATED BY V1Photos.com ARE DEEMED HIGHLY RELIABLE BUT NOT GUARANTEED.



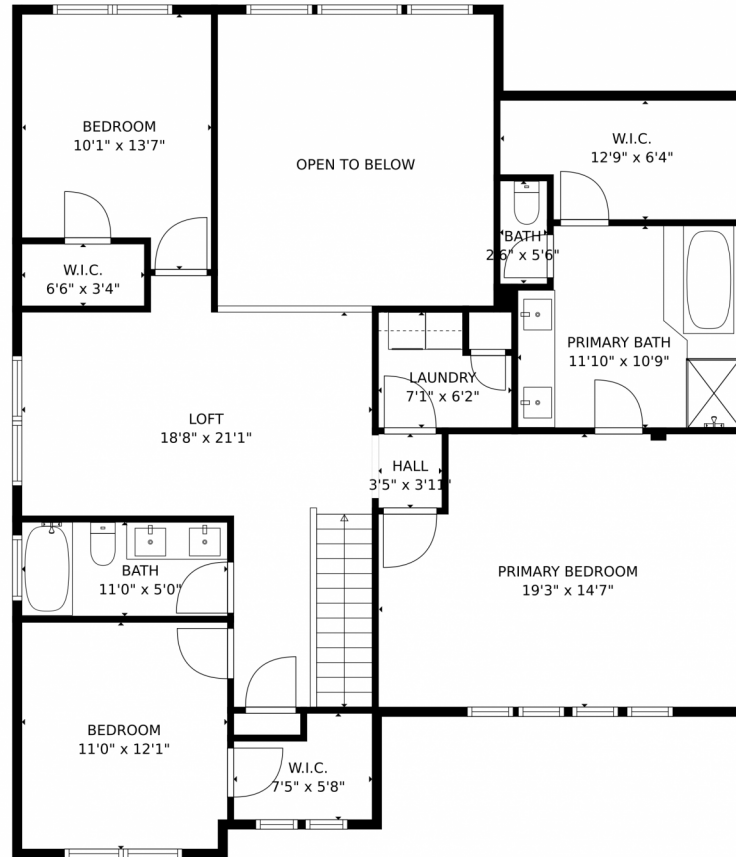
Disclaimer: Sizes and Dimensions are Approximate, Actual May Vary.



**Katie Robinson**  
970-430-9630  
katierobinson@windermere.com



# 1072 Little Grove Court, Longmont, CO 80503 – Upper Level



**TOTAL: 2286 sq. ft**  
Below Ground: 0 sq. ft, FLOOR 2: 1032 sq. ft, FLOOR 3: 1254 sq. ft  
EXCLUDED AREAS: BASEMENT: 970 sq. ft, ELECTRICAL ROOM: 62 sq. ft, GARAGE: 642 sq. ft,  
PORCH: 137 sq. ft, PATIO: 285 sq. ft, OPEN TO BELOW: 229 sq. ft

MEASUREMENTS CALCULATED BY V1Photos.com ARE DEEMED HIGHLY RELIABLE BUT NOT GUARANTEED.



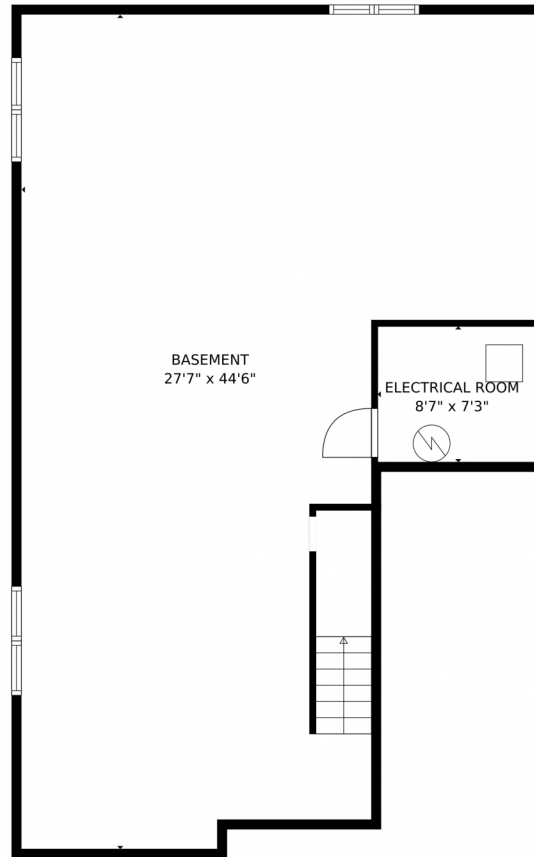
Disclaimer: Sizes and Dimensions are Approximate, Actual May Vary.



**Katie Robinson**  
970-430-9630  
katierobinson@windermere.com



# 1072 Little Grove Court, Longmont, CO 80503 – Lower Level



**TOTAL: 2286 sq. ft**  
Below Ground: 0 sq. ft, FLOOR 2: 1032 sq. ft, FLOOR 3: 1254 sq. ft  
EXCLUDED AREAS: BASEMENT: 970 sq. ft, ELECTRICAL ROOM: 62 sq. ft, GARAGE: 642 sq. ft,  
PORCH: 137 sq. ft, PATIO: 285 sq. ft, OPEN TO BELOW: 229 sq. ft

MEASUREMENTS CALCULATED BY V1Photos.com ARE DEEMED HIGHLY RELIABLE BUT NOT GUARANTEED.



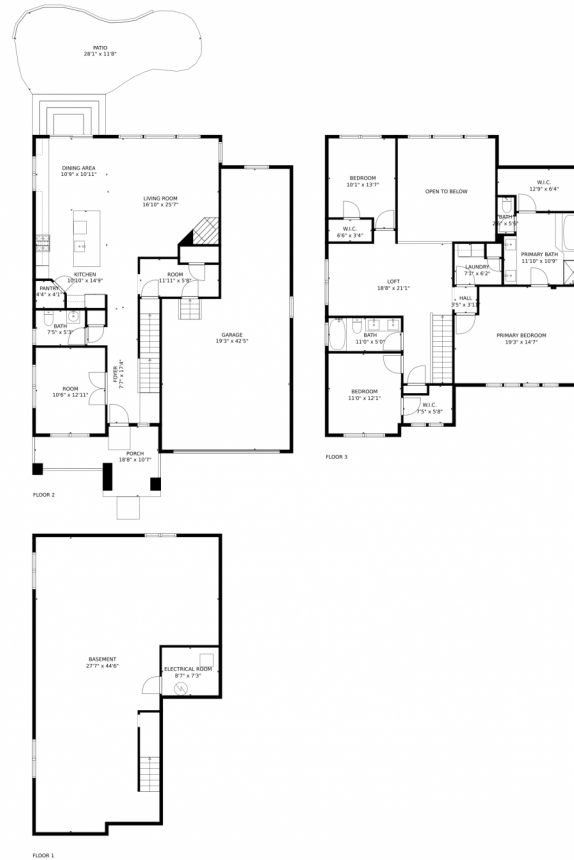
Disclaimer: Sizes and Dimensions are Approximate, Actual May Vary.



**Katie Robinson**  
970-430-9630  
katierobinson@windermere.com



# 1072 Little Grove Court, Longmont, CO 80503 – All Levels



**TOTAL: 2286 sq. ft**  
Below Ground: 0 sq. ft, FLOOR 2: 1032 sq. ft, FLOOR 3: 1254 sq. ft  
EXCLUDED AREAS: BASEMENT: 970 sq. ft, ELECTRICAL ROOM: 62 sq. ft, GARAGE: 642 sq. ft,  
PORCH: 137 sq. ft, PATIO: 285 sq. ft, OPEN TO BELOW: 229 sq. ft

MEASUREMENTS CALCULATED BY V1Photos.com ARE DEEMED HIGHLY RELIABLE BUT NOT GUARANTEED.



Disclaimer: Sizes and Dimensions are Approximate, Actual May Vary.



**Katie Robinson**  
970-430-9630  
katierobinson@windermere.com

