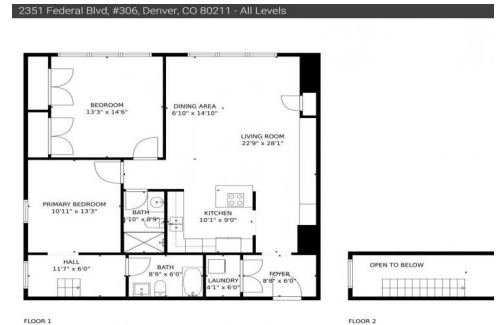
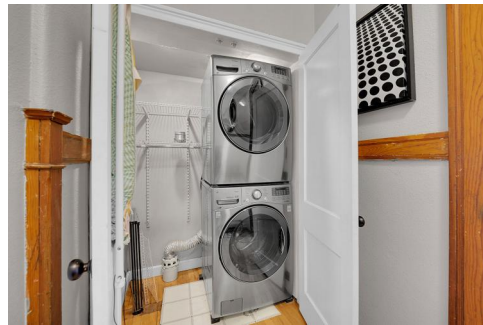




2351 Federal Blvd
Denver, CO 80211



Condominium



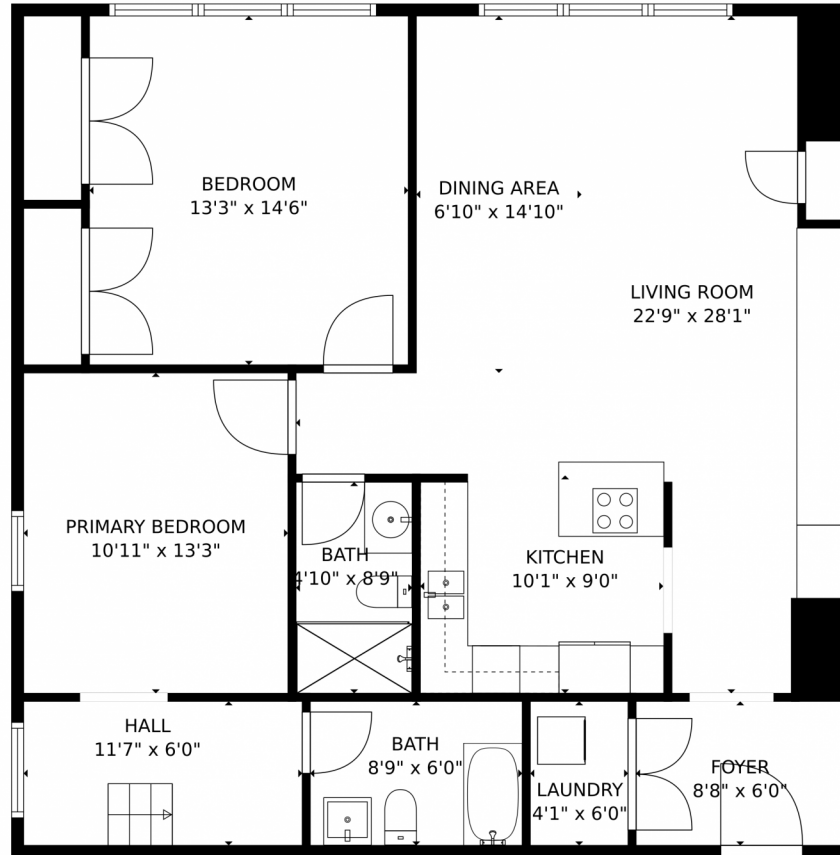
1200 SQFT



Amber Wermerskirchen
720-560-9772
amber@thewrealestategroup.com



2351 Federal Blvd, Denver, CO 80211 – Main Level



TOTAL: 1170 sq. ft
Below Ground: 1170 sq. ft, FLOOR 2: 0 sq. ft
EXCLUDED AREAS: LOW CEILING: 106 sq. ft, OPEN TO BELOW: 54 sq. ft
MEASUREMENTS CALCULATED BY V1Photos.com ARE DEEMED HIGHLY RELIABLE BUT NOT GUARANTEED.

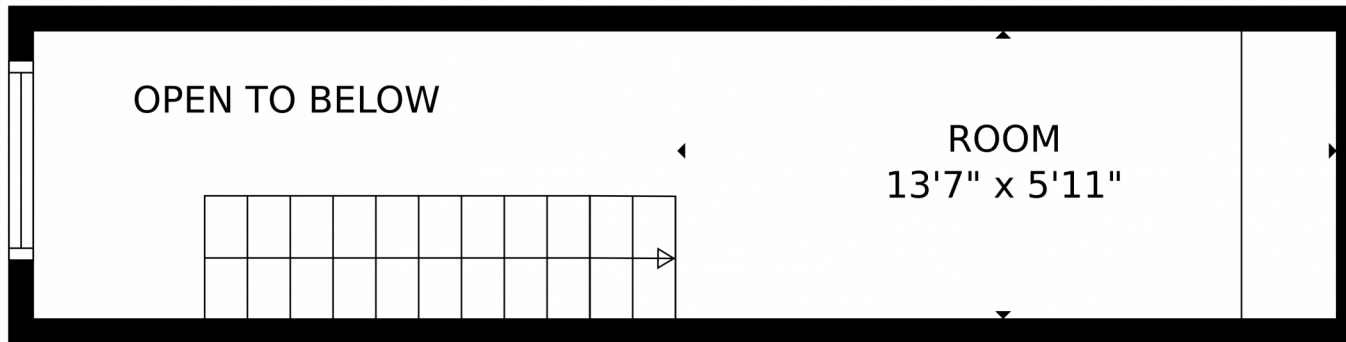


Disclaimer: Sizes and Dimensions are Approximate, Actual May Vary.



Amber Wermerskirchen
720-560-9772
amber@thewrealestategroup.com





TOTAL: 1170 sq. ft
Below Ground: 1170 sq. ft, FLOOR 2: 0 sq. ft
EXCLUDED AREAS: LOW CEILING: 106 sq. ft, OPEN TO BELOW: 54 sq. ft
MEASUREMENTS CALCULATED BY V1Photos.com ARE DEEMED HIGHLY RELIABLE BUT NOT GUARANTEED.



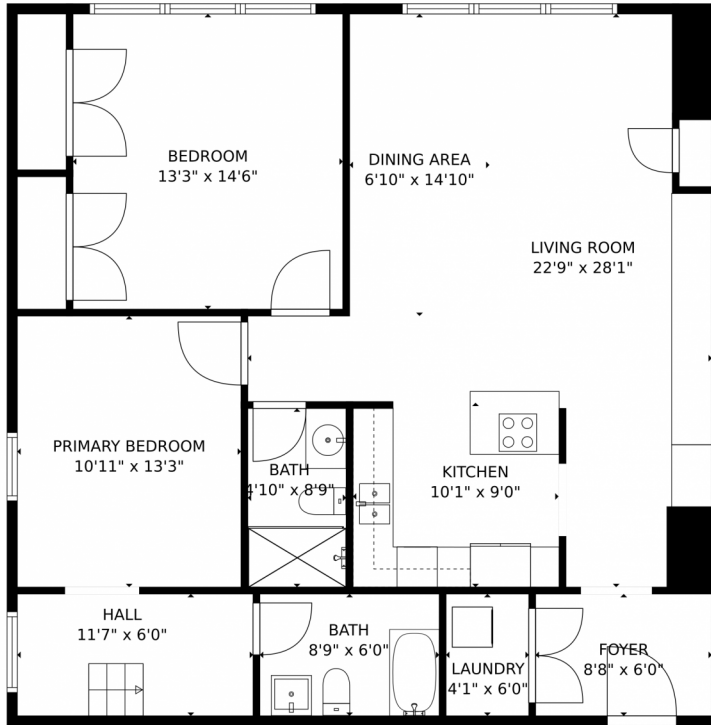
Disclaimer: Sizes and Dimensions are Approximate, Actual May Vary.



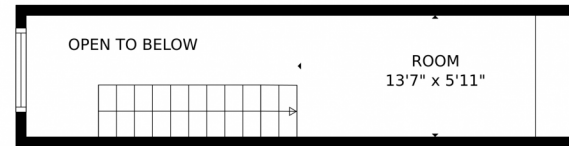
Amber Wermerskirchen
720-560-9772
amber@thewrealestategroup.com



2351 Federal Blvd, Denver, CO 80211 – All Levels



FLOOR 1



FLOOR 2

TOTAL: 1170 sq. ft
Below Ground: 1170 sq. ft, FLOOR 2: 0 sq. ft
EXCLUDED AREAS: LOW CEILING: 106 sq. ft, OPEN TO BELOW: 54 sq. ft
MEASUREMENTS CALCULATED BY V1Photos.com ARE DEEMED HIGHLY RELIABLE BUT NOT GUARANTEED.



Disclaimer: Sizes and Dimensions are Approximate, Actual May Vary.



Amber Wermerskirchen
720-560-9772
amber@thewrealestategroup.com

