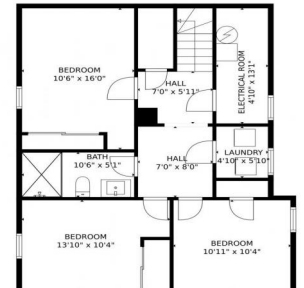




3516 Saint Paul Street, Denver, CO 80205 - Lower Level



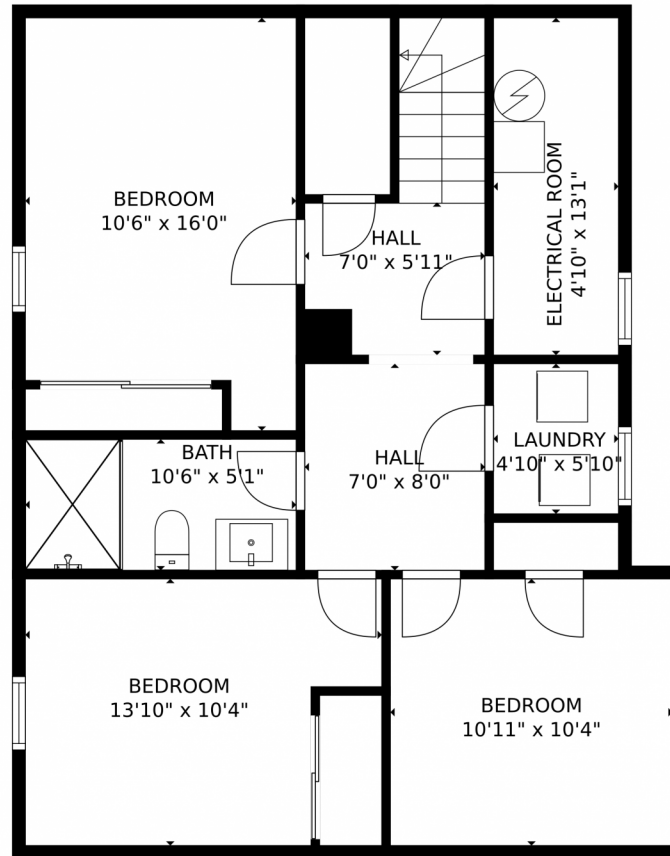
 Single Family  1824 SQFT



Taylor Haas
 303-665-7368
 taylorh@coloradorpm.com
<https://www.coloradorpm.com/available-rental-properties-denver>



3516 Saint Paul Street, Denver, CO 80205 – Lower Level



TOTAL: 1537 sq. ft
Below Ground: 694 sq. ft, FLOOR 2: 843 sq. ft
EXCLUDED AREAS: ELECTRICAL ROOM: 63 sq. ft, PORCH: 90 sq. ft, PATIO: 330 sq. ft
MEASUREMENTS CALCULATED BY V1Photos.com ARE DEEMED HIGHLY RELIABLE BUT NOT GUARANTEED.



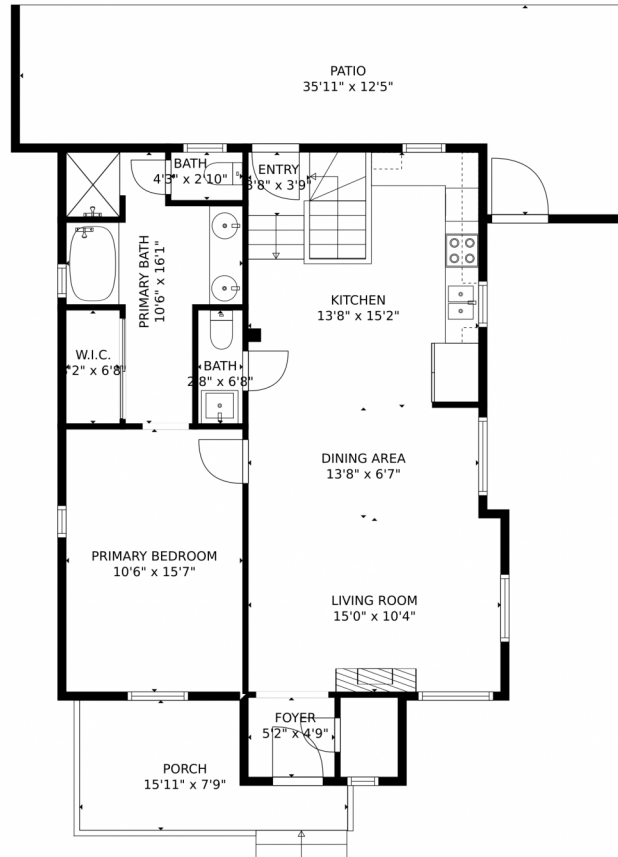
Disclaimer: Sizes and Dimensions are Approximate, Actual May Vary.



Taylor Haas
303-665-7368
taylorh@coloradorm.com
<https://www.coloradorm.com/available-rental-properties-denver>



3516 Saint Paul Street, Denver, CO 80205 – Main Level



TOTAL: 1537 sq. ft
Below Ground: 694 sq. ft, FLOOR 2: 843 sq. ft
EXCLUDED AREAS: ELECTRICAL ROOM: 63 sq. ft, PORCH: 90 sq. ft, PATIO: 330 sq. ft
MEASUREMENTS CALCULATED BY V1Photos.COM ARE DEEMED HIGHLY RELIABLE BUT NOT GUARANTEED.



Disclaimer: Sizes and Dimensions are Approximate, Actual May Vary.



Taylor Haas
303-665-7368
taylorh@coloradorpm.com
<https://www.coloradorpm.com/available-rental-properties-denver>



Scan code
for more
property
details



3516 Saint Paul Street, Denver, CO 80205 – All Levels



TOTAL: 1537 sq. ft
Below Ground: 694 sq. ft, FLOOR 2: 843 sq. ft
EXCLUDED AREAS: ELECTRICAL ROOM: 63 sq. ft, PORCH: 90 sq. ft, PATIO: 330 sq. ft
MEASUREMENTS CALCULATED BY V1Photos.com ARE DEEMED HIGHLY RELIABLE BUT NOT GUARANTEED.



Disclaimer: Sizes and Dimensions are Approximate, Actual May Vary.



Taylor Haas
303-665-7368
taylorh@coloradorpm.com
<https://www.coloradorpm.com/available-rental-properties-denver>



Scan code
for more
property
details