

COMPASS

11823 Lincoln Street
Northglenn, CO 80233



Single Family



1816 SQFT



3 Beds



2 Baths



1 Car



0.08 Acre



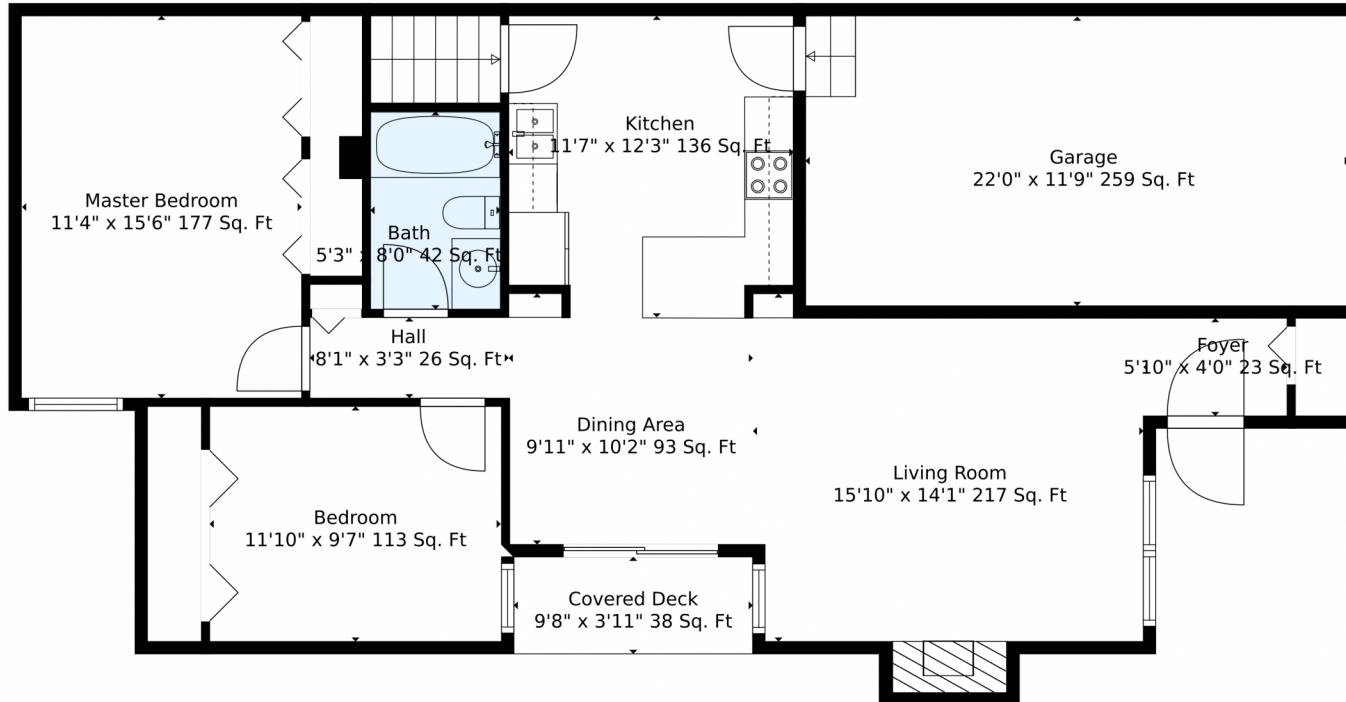
Melissa Hill
303-638-5157
melissa@melissahillrealestate.com



Scan code
for more
property
details



11823 Lincoln Street, Northglenn, CO 80233 – Main Level



TOTAL: 1364 sq. ft
Below Ground: 439 sq. ft, FLOOR 2: 925 sq. ft
EXCLUDED AREAS: BASEMENT: 260 sq. ft, GARAGE: 259 sq. ft, COVERED DECK: 38 sq. ft,
FIREPLACE: 7 sq. ft

Measurements Are Calculated By Cubicasa Technology. Deemed Highly Reliable But Not Guaranteed.

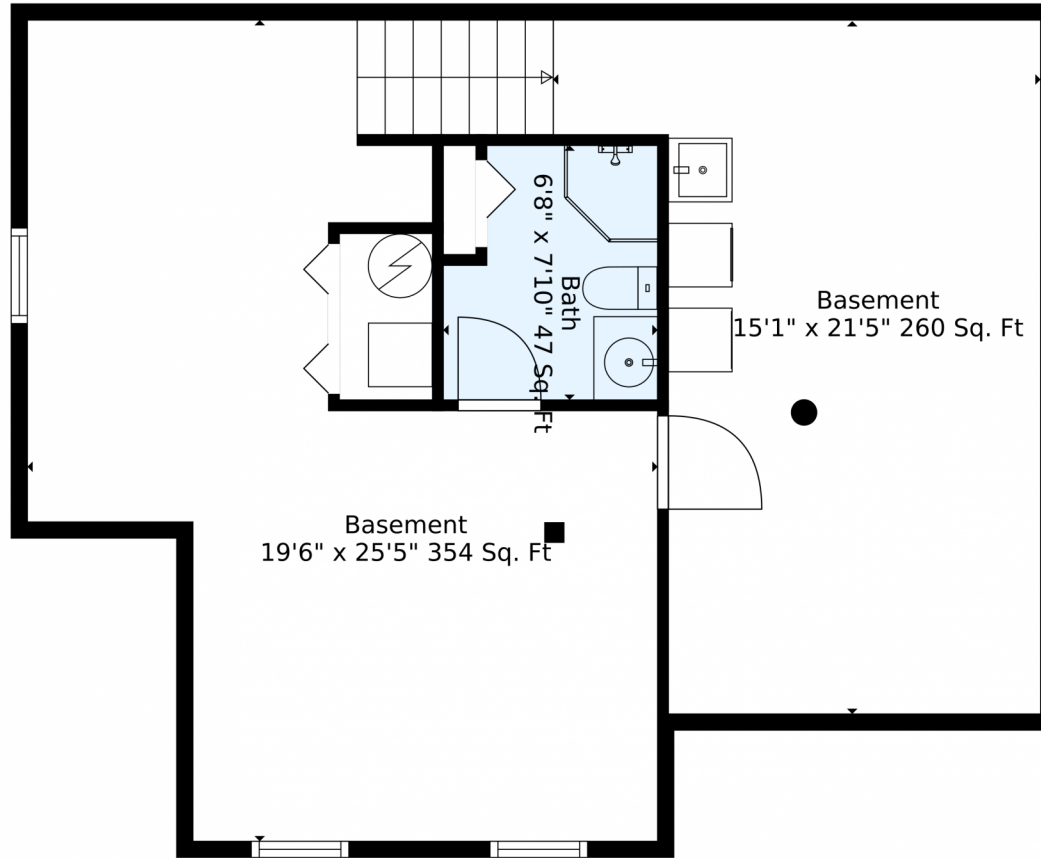
Disclaimer: Sizes and Dimensions are Approximate, Actual May Vary.



Melissa Hill
303-638-5157
melissa@melissahillrealestate.com



11823 Lincoln Street, Northglenn, CO 80233 – Basement



TOTAL: 1364 sq. ft
Below Ground: 439 sq. ft, FLOOR 2: 925 sq. ft
EXCLUDED AREAS: BASEMENT: 260 sq. ft, GARAGE: 259 sq. ft, COVERED DECK: 38 sq. ft,
FIREPLACE: 7 sq. ft

Measurements Are Calculated By Cubicasa Technology. Deemed Highly Reliable But Not Guaranteed.

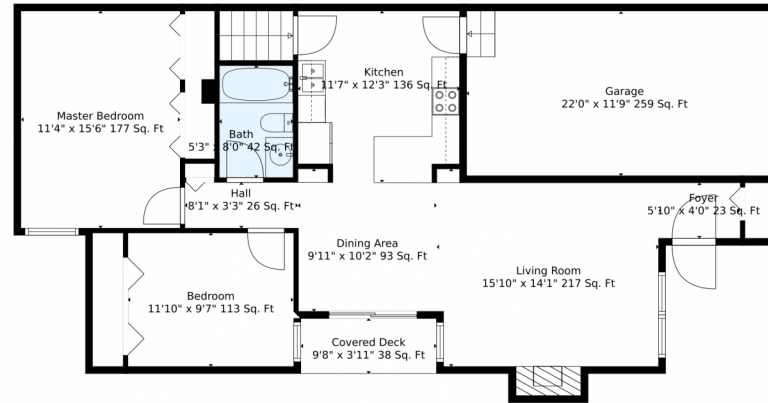
Disclaimer: Sizes and Dimensions are Approximate, Actual May Vary.



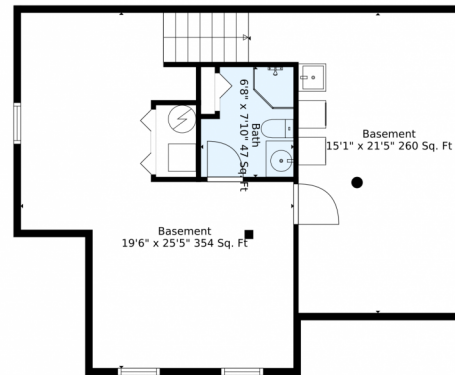
Melissa Hill
303-638-5157
melissa@melissahillrealestate.com



11823 Lincoln Street, Northglenn, CO 80233 – All Levels



Floor 2



Floor 1

TOTAL: 1364 sq. ft

Below Ground: 439 sq. ft, FLOOR 2: 925 sq. ft

EXCLUDED AREAS: BASEMENT: 260 sq. ft, GARAGE: 259 sq. ft, COVERED DECK: 38 sq. ft,
FIREPLACE: 7 sq. ft

Measurements Are Calculated By Cubicasa Technology. Deemed Highly Reliable But Not Guaranteed.

Disclaimer: Sizes and Dimensions are Approximate, Actual May Vary.



Melissa Hill
303-638-5157
melissa@melissahillrealestate.com

