

Single Family



4098 SQFT



5 Beds



4 Baths



2 Car



0.23 Acre

PROPERTY DETAILS

Nestled in the prestigious GREEN MOUNTAIN ESTATES neighborhood, this residence is the pinnacle of Colorado living. Perched on a prime lot, prepare to be captivated by unobstructed VIEWS of downtown Denver, the majestic Front Range, and Green Mountain open space. Step inside to discover a home transformed boasting commercial grade vinyl flooring for effortless maintenance, along with fresh interior & exterior paint. The entry office is adorned with French doors & a custom accent wall. Prepare to be dazzled by the updated kitchen featuring breathtaking VIEWS as you gather around the expansive 13ft center island, adorned w/ Quartzite countertops & soft-close cabinetry. Top-of-the-line Bosch SS appliances, 48" 8-burner gas range, pot filler, built-in microwave, & dual pantries complete the space. Entertain in style w/ both formal & informal dining areas, seamlessly transitioning into the family room where panoramic VIEWS serve as the backdrop to cozy gatherings around the brick fireplace & custom accent wall. Step outside onto your expansive composite deck w/more views stretching as far as the eye can see. Retreat to the primary suite, where luxury awaits w/an ensuite 5-piece bath & a spacious walk-in closet. Three additional bedrooms & a full bath, adorned w/ custom tile, provide ample space for family and guests. The WALK-OUT BASEMENT offers additional living space, complete w/ a rec room & family room featuring a stone fireplace & custom



Brianna Griffin

720-272-9710

brianna@wealthbyre.com

<https://www.WealthbyRE.com>



Scan code
for more
property
details



oak paneling. A large full bathroom w/ double sinks & slab leathered countertops, along w/ a separate laundry room w/ cabinetry for storage, complete this lower level oasis. Enjoy easy maintenance w/ newly sodded front yard & a sprinkler system, stone-coated steel Decra shingle roof, upgraded electrical panel, & new HVAC. Minutes from 2,400 acres of Green Mountain open space to explore endless miles of trails for hiking, biking, and outdoor recreation. Don't miss the opportunity to make this breathtaking sanctuary your HOME!



Brianna Griffin

720-272-9710

brianna@wealthbyre.com

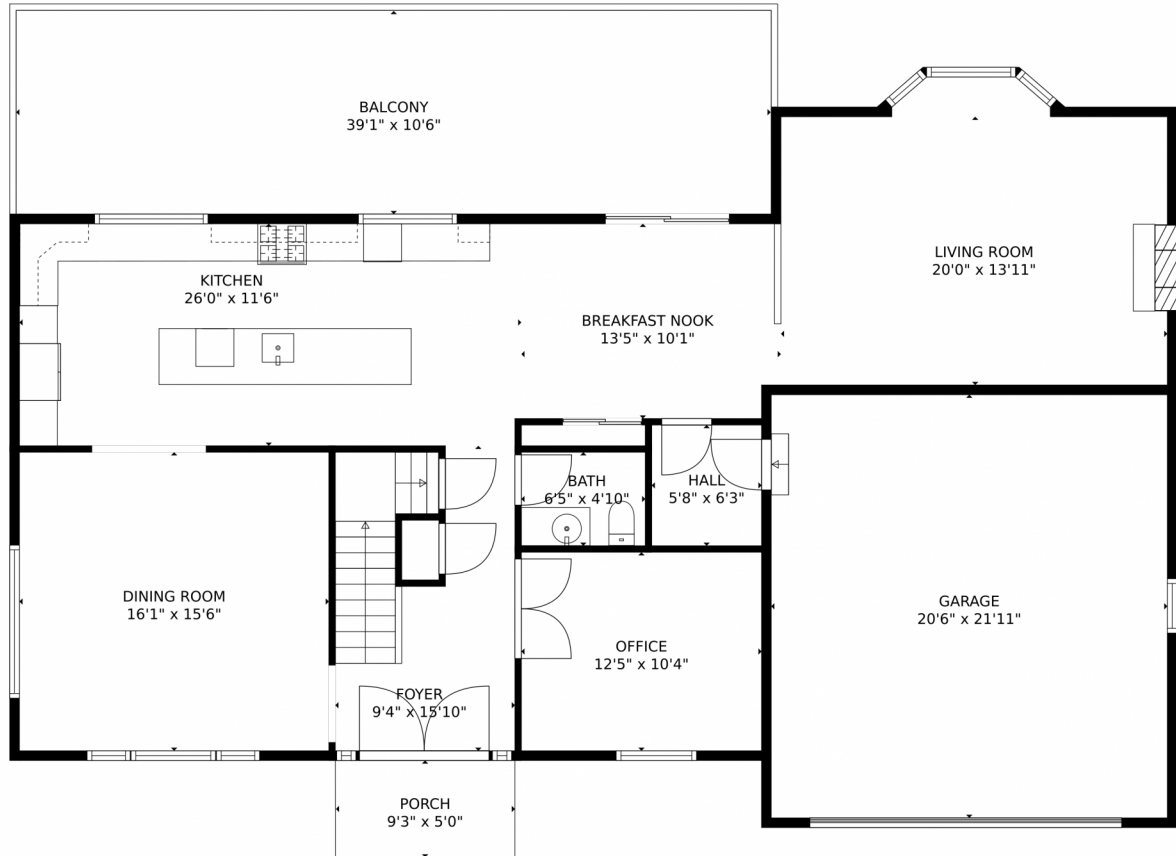
<https://www.WealthbyRE.com>



Scan code
for more
property
details



14129 West Center Drive, Lakewood, CO 80228 – Main Level



TOTAL: 3614 sq. ft
Below Ground: 1197 sq. ft, FLOOR 2: 1341 sq. ft, FLOOR 3: 1076 sq. ft
EXCLUDED AREAS: ELECTRICAL ROOM: 107 sq. ft, COVERED PATIO: 409 sq. ft, FIREPLACE: 11 sq. ft,
GARAGE: 451 sq. ft, BALCONY: 414 sq. ft, PORCH: 47 sq. ft,
EMBEDDEDWINDOW: 15 sq. ft

MEASUREMENTS CALCULATED BY V1Photos.com ARE DEEMED HIGHLY RELIABLE BUT NOT GUARANTEED.



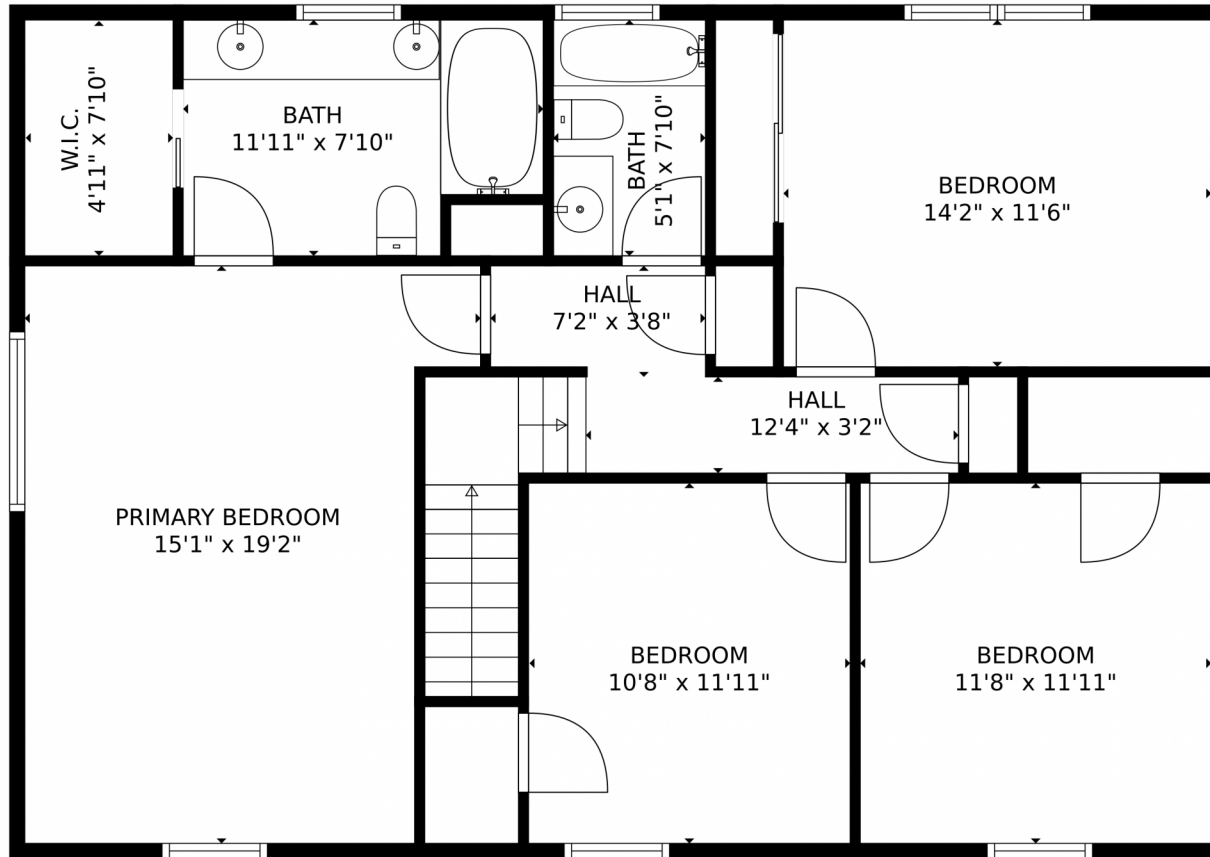
Disclaimer: Sizes and Dimensions are Approximate, Actual May Vary.



Brianna Griffin
720-272-9710
brianna@wealthbyre.com
<https://www.WealthbyRE.com>



14129 West Center Drive, Lakewood, CO 80228 – Upper Level



TOTAL: 3614 sq. ft
Below Ground: 1197 sq. ft, FLOOR 2: 1341 sq. ft, FLOOR 3: 1076 sq. ft
EXCLUDED AREAS: ELECTRICAL ROOM: 107 sq. ft, COVERED PATIO: 409 sq. ft, FIREPLACE: 11 sq. ft,
GARAGE: 451 sq. ft, BALCONY: 414 sq. ft, PORCH: 47 sq. ft,
EMBEDDED WINDOW: 15 sq. ft

MEASUREMENTS CALCULATED BY V1Photos.COM ARE DEEMED HIGHLY RELIABLE BUT NOT GUARANTEED.



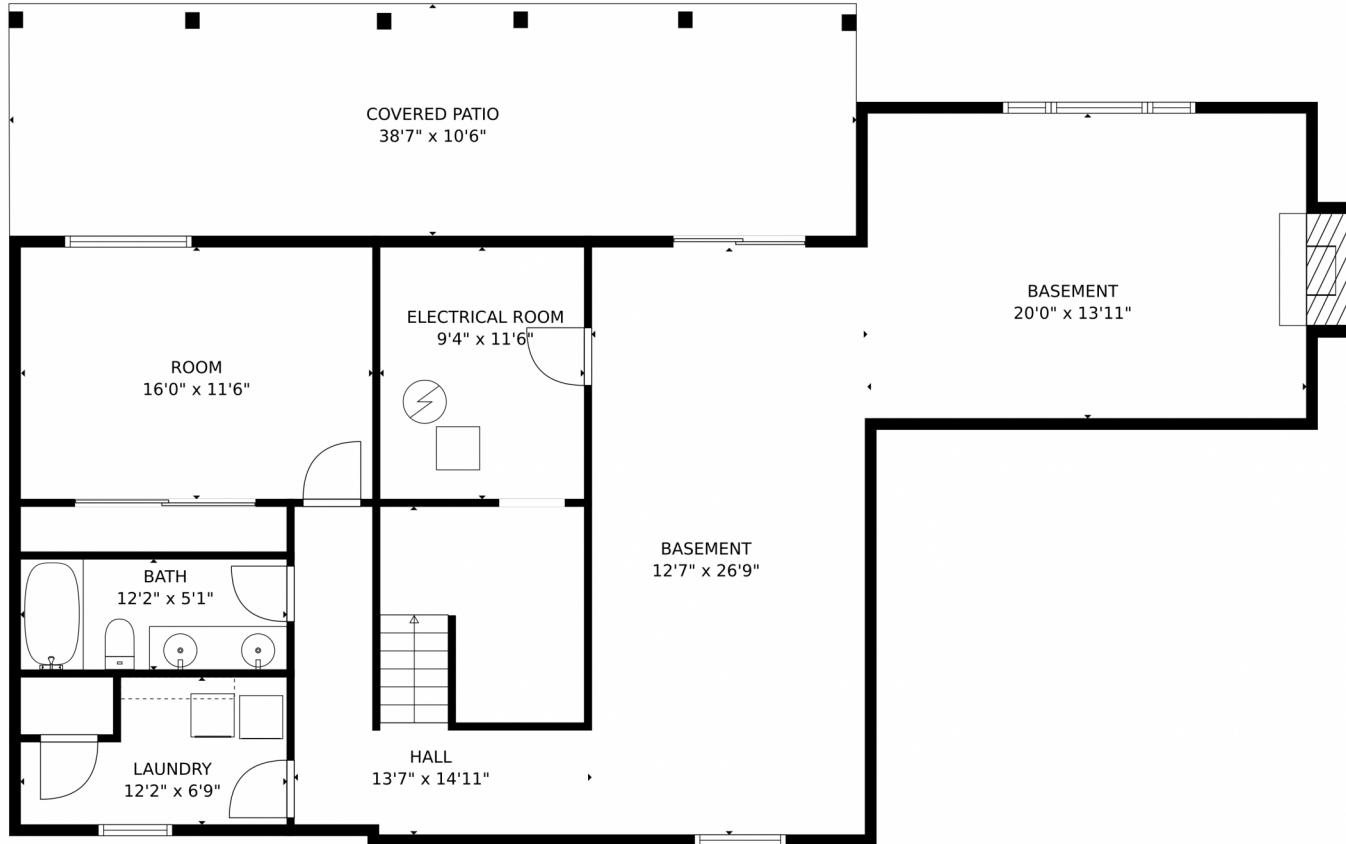
Disclaimer: Sizes and Dimensions are Approximate, Actual May Vary.



Brianna Griffin
720-272-9710
brianna@wealthbyre.com
<https://www.WealthbyRE.com>



14129 West Center Drive, Lakewood, CO 80228 – Lower Level



TOTAL: 3614 sq. ft
Below Ground: 1197 sq. ft, FLOOR 2: 1341 sq. ft, FLOOR 3: 1076 sq. ft
EXCLUDED AREAS: ELECTRICAL ROOM: 107 sq. ft, COVERED PATIO: 409 sq. ft, FIREPLACE: 11 sq. ft,
GARAGE: 451 sq. ft, BALCONY: 414 sq. ft, PORCH: 47 sq. ft,
EMBEDDED WINDOW: 15 sq. ft

MEASUREMENTS CALCULATED BY V1Photos.COM ARE DEEMED HIGHLY RELIABLE BUT NOT GUARANTEED.



Disclaimer: Sizes and Dimensions are Approximate, Actual May Vary.



Brianna Griffin
720-272-9710
brianna@wealthbyre.com
<https://www.WealthbyRE.com>



Scan code
for more
property
details



14129 West Center Drive, Lakewood, CO 80228 – All Levels



TOTAL: 3614 sq. ft
Below Ground: 1197 sq. ft, FLOOR 2: 1341 sq. ft, FLOOR 3: 1076 sq. ft
EXCLUDED AREAS: ELECTRICAL ROOM: 107 sq. ft, COVERED PATIO: 409 sq. ft, FIREPLACE: 11 sq. ft,
GARAGE: 451 sq. ft, BALCONY: 414 sq. ft, PORCH: 47 sq. ft,
EMBEDDEDWINDOW: 15 sq. ft

MEASUREMENTS CALCULATED BY V1Photos.com ARE DEEMED HIGHLY RELIABLE BUT NOT GUARANTEED.



Disclaimer: Sizes and Dimensions are Approximate, Actual May Vary.



Brianna Griffin
720-272-9710
brianna@wealthbyre.com
<https://www.WealthbyRE.com>



Scan code
for more
property
details

