



Single Family



2881 SQFT



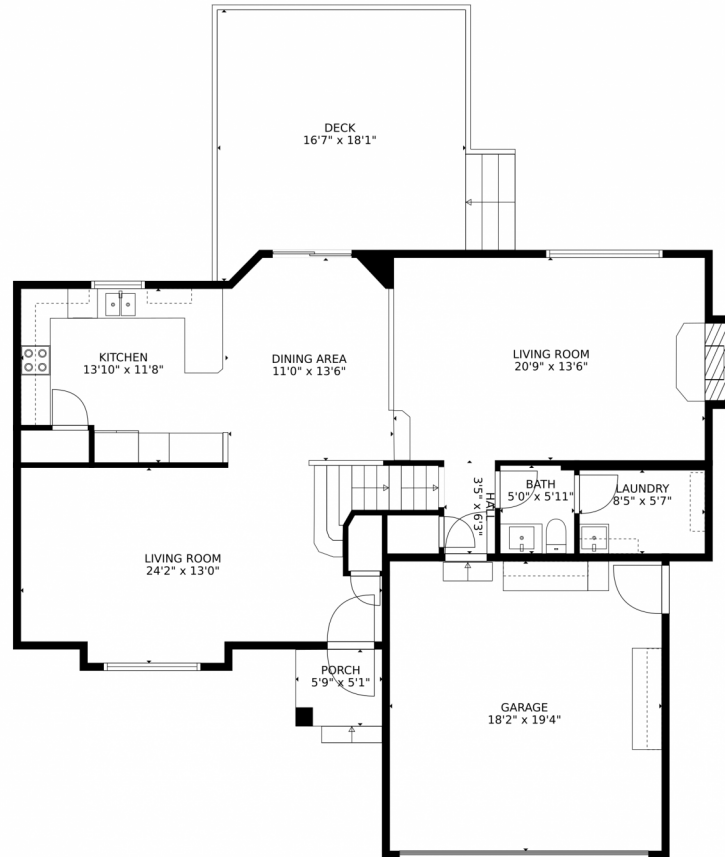
**Rondi DuPont**  
970-401-0123  
rdupont@windermere.com



Scan code  
for more  
property  
details



# 4431 Viewpoint Court, Fort Collins, CO 80526 — Main Level



**TOTAL: 2523 sq. ft**  
Below Ground: 817 sq. ft, FLOOR 2: 1030 sq. ft, FLOOR 3: 676 sq. ft  
EXCLUDED AREAS: ELECTRICAL ROOM: 85 sq. ft, GARAGE: 352 sq. ft, PORCH: 30 sq. ft,  
DECK: 291 sq. ft, FIREPLACE: 7 sq. ft

MEASUREMENTS CALCULATED BY V1Photos.com ARE DEEMED HIGHLY RELIABLE BUT NOT GUARANTEED.



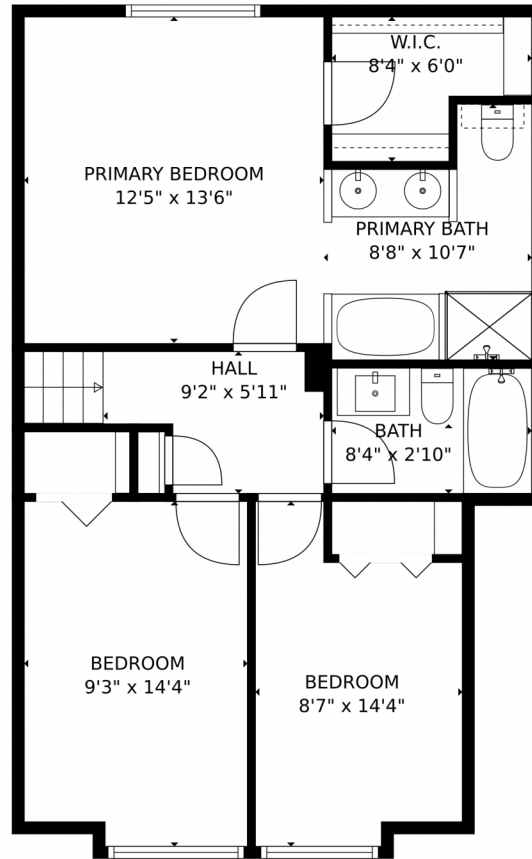
Disclaimer: Sizes and Dimensions are Approximate, Actual May Vary.



Rondi DuPont  
970-401-0123  
rdupont@windermere.com



# 4431 Viewpoint Court, Fort Collins, CO 80526 – Upper Level



**TOTAL: 2523 sq. ft**  
Below Ground: 817 sq. ft, FLOOR 2: 1030 sq. ft, FLOOR 3: 676 sq. ft  
EXCLUDED AREAS: ELECTRICAL ROOM: 85 sq. ft, GARAGE: 352 sq. ft, PORCH: 30 sq. ft,  
DECK: 291 sq. ft, FIREPLACE: 7 sq. ft  
MEASUREMENTS CALCULATED BY V1Photos.com ARE DEEMED HIGHLY RELIABLE BUT NOT GUARANTEED.



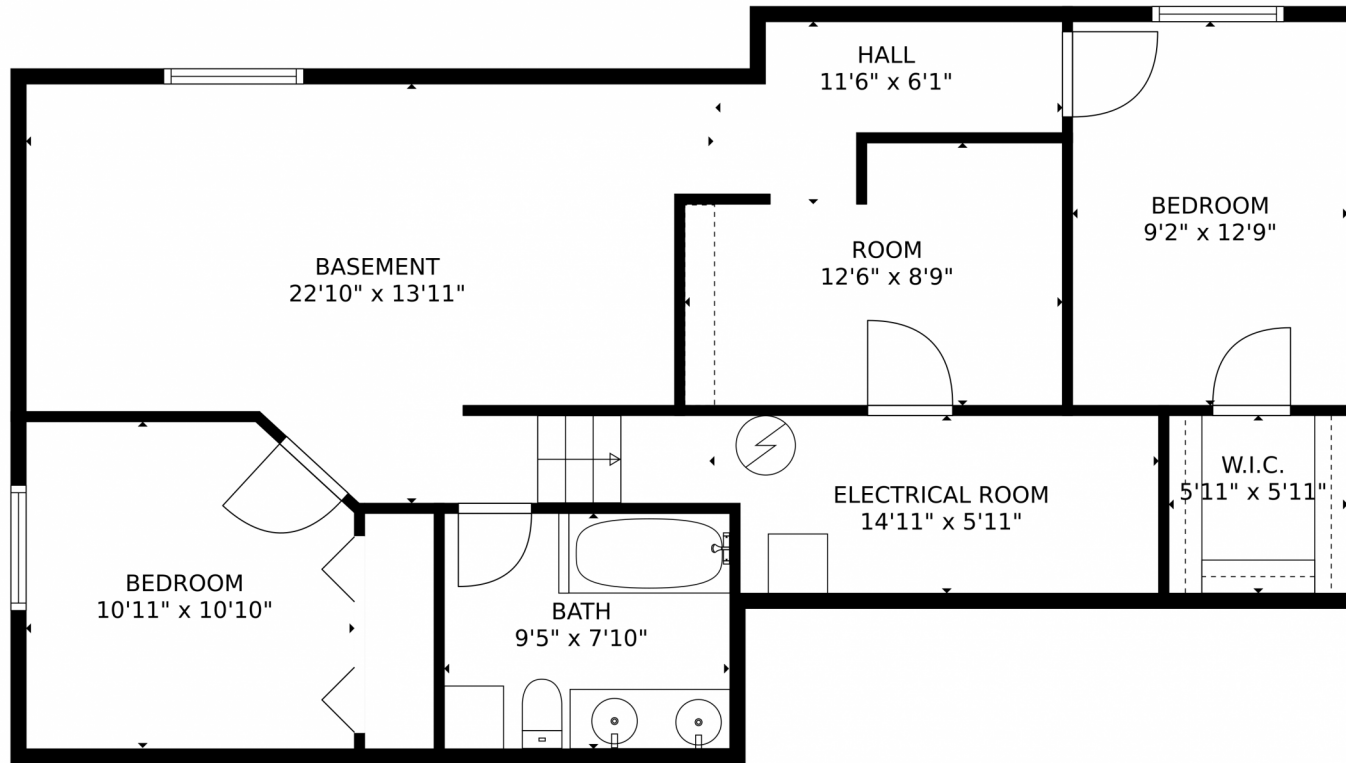
Disclaimer: Sizes and Dimensions are Approximate, Actual May Vary.



**Rondi DuPont**  
970-401-0123  
rdupont@windermere.com



# 4431 Viewpoint Court, Fort Collins, CO 80526 – Lower Level



**TOTAL: 2523 sq. ft**  
Below Ground: 817 sq. ft, FLOOR 2: 1030 sq. ft, FLOOR 3: 676 sq. ft  
EXCLUDED AREAS: ELECTRICAL ROOM: 85 sq. ft, GARAGE: 352 sq. ft, PORCH: 30 sq. ft,  
DECK: 291 sq. ft, FIREPLACE: 7 sq. ft  
MEASUREMENTS CALCULATED BY V1Photos.com ARE DEEMED HIGHLY RELIABLE BUT NOT GUARANTEED.



Disclaimer: Sizes and Dimensions are Approximate, Actual May Vary.



**Rondi DuPont**  
970-401-0123  
rdupont@windermere.com





# 4431 Viewpoint Court, Fort Collins, CO 80526 – All Levels



**TOTAL: 2523 sq. ft**  
Below Ground: 817 sq. ft, FLOOR 2: 1030 sq. ft, FLOOR 3: 676 sq. ft  
EXCLUDED AREAS: ELECTRICAL ROOM: 85 sq. ft, GARAGE: 352 sq. ft, PORCH: 30 sq. ft,  
DECK: 291 sq. ft, FIREPLACE: 7 sq. ft

MEASUREMENTS CALCULATED BY V1Photos.com ARE DEEMED HIGHLY RELIABLE BUT NOT GUARANTEED.



Disclaimer: Sizes and Dimensions are Approximate, Actual May Vary.



Rondi DuPont  
970-401-0123  
rdupont@windermere.com

