



Single Family



2122 SQFT



3 Beds



3 Baths



13.67 Acre

PROPERTY DETAILS

Experience Colorado living at its finest in this stunning custom log home nestled on 13.67 acres with breathtaking mountain and valley views. Featuring custom wood and tile floors, impressive 18-inch logs, and an open floor plan offering panoramic vistas. The kitchen boasts custom knotty alder cabinets, leather granite counters, and stainless steel appliances. Relax in the living room by the stone gas fireplace or step onto the wraparound deck with a hot tub. Upstairs, the primary bedroom offers luxury with a walk-in closet, primary bathroom, and private viewing deck. The walk-out basement includes two bedrooms, a full bathroom, and a family room with a stone gas fireplace. Additional highlights include a heated detached workshop/shed, water treatment system, Generac generators, and a paved driveway with southern exposure. Perfectly situated for creek walks, hikes in Bergen Park, and exploring Mount Blue Sky. Don't miss this extraordinary opportunity!



Laura Gilsdorf

720-530-9085

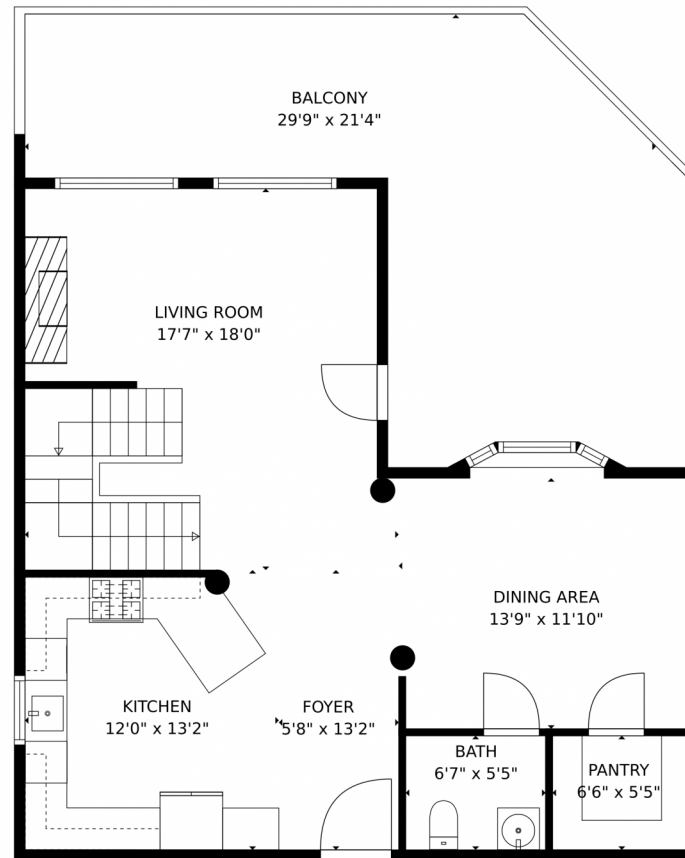
laura.gilsdorf@madisonprops.com

<https://www.laura-homes.com>

Scan code
for more
property
details



55 Mountain Estate Drive, Evergreen, CO 80439 – main level



TOTAL: 2056 sq. ft
Below Ground: 755 sq. ft, FLOOR 2: 777 sq. ft, FLOOR 3: 524 sq. ft
EXCLUDED AREAS: ELECTRICAL ROOM: 22 sq. ft, BALCONY: 434 sq. ft, EMBEDDED WINDOW: 7 sq. ft,
OPEN TO BELOW: 211 sq. ft, LOW CEILING: 41 sq. ft

MEASUREMENTS CALCULATED BY V1Photos.com ARE DEEMED HIGHLY RELIABLE BUT NOT GUARANTEED.



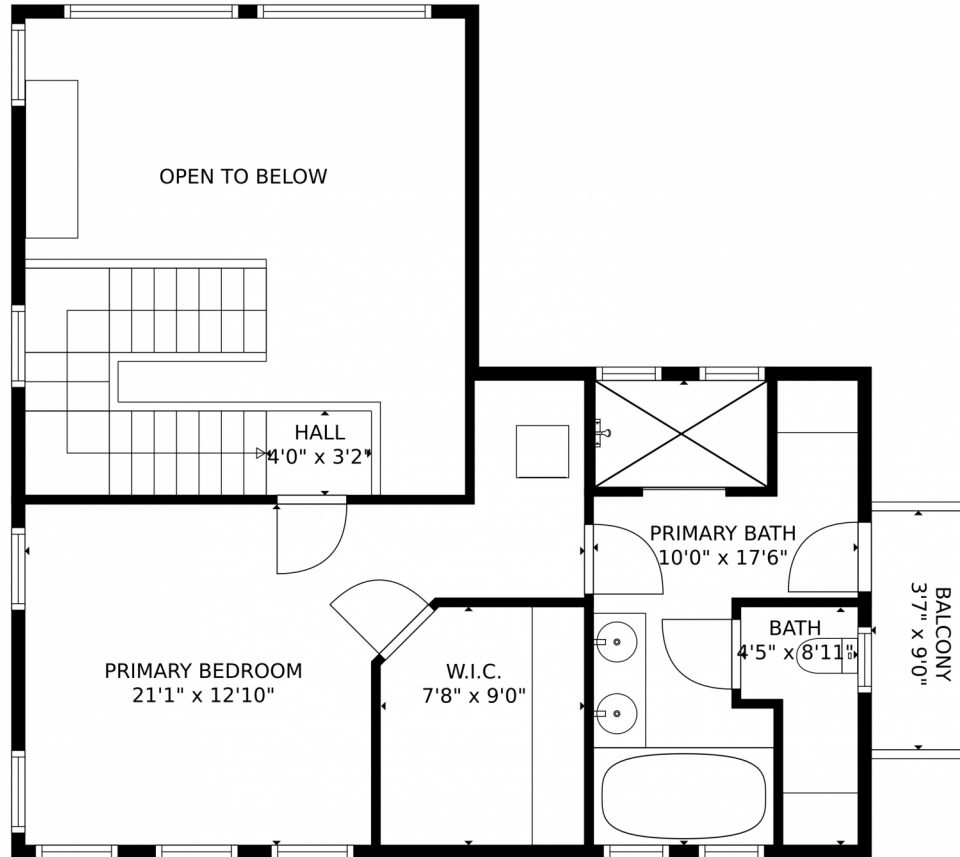
Disclaimer: Sizes and Dimensions are Approximate, Actual May Vary.



Laura Gilsdorf
720-530-9085
laura.gilsdorf@madisonprops.com
<https://www.laura-homes.com>



55 Mountain Estate Drive, Evergreen, CO 80439 – upper level



TOTAL: 2056 sq. ft
Below Ground: 755 sq. ft, FLOOR 2: 777 sq. ft, FLOOR 3: 524 sq. ft
EXCLUDED AREAS: ELECTRICAL ROOM: 22 sq. ft, BALCONY: 434 sq. ft, EMBEDDED WINDOW: 7 sq. ft,
OPEN TO BELOW: 211 sq. ft, LOW CEILING: 41 sq. ft
MEASUREMENTS CALCULATED BY V1Photos.com ARE DEEMED HIGHLY RELIABLE BUT NOT GUARANTEED.



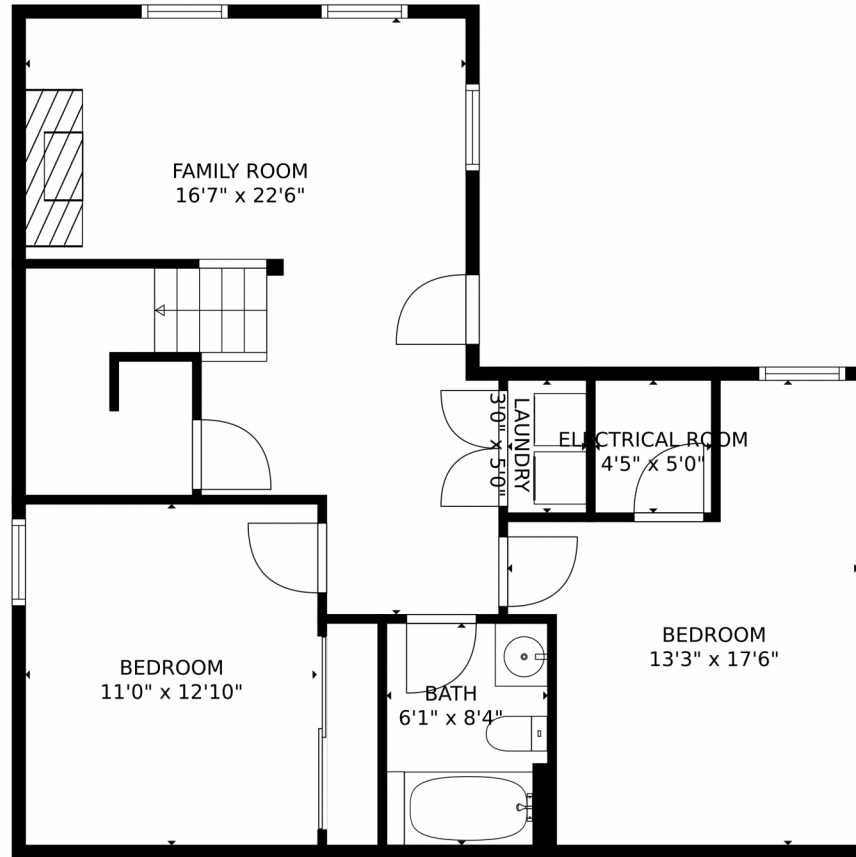
Disclaimer: Sizes and Dimensions are Approximate, Actual May Vary.



Laura Gilsdorf
720-530-9085
laura.gilsdorf@madisonprops.com
<https://www.laura-homes.com>



55 Mountain Estate Drive, Evergreen, CO 80439 – lower level



TOTAL: 2056 sq. ft
Below Ground: 755 sq. ft, FLOOR 2: 777 sq. ft, FLOOR 3: 524 sq. ft
EXCLUDED AREAS: ELECTRICAL ROOM: 22 sq. ft, BALCONY: 434 sq. ft, EMBEDDED WINDOW: 7 sq. ft,
OPEN TO BELOW: 211 sq. ft, LOW CEILING: 41 sq. ft
MEASUREMENTS CALCULATED BY V1Photos.com ARE DEEMED HIGHLY RELIABLE BUT NOT GUARANTEED.



Disclaimer: Sizes and Dimensions are Approximate, Actual May Vary.



Laura Gilsdorf
720-530-9085
laura.gilsdorf@madisonprops.com
<https://www.laura-homes.com>



Scan code
for more
property
details



55 Mountain Estate Drive, Evergreen, CO 80439 – all levels



TOTAL: 2056 sq. ft
Below Ground: 755 sq. ft, FLOOR 2: 777 sq. ft, FLOOR 3: 524 sq. ft
EXCLUDED AREAS: ELECTRICAL ROOM: 22 sq. ft, BALCONY: 434 sq. ft, EMBEDDED WINDOW: 7 sq. ft,
OPEN TO BELOW: 211 sq. ft, LOW CEILING: 41 sq. ft

MEASUREMENTS CALCULATED BY V1Photos.com ARE DEEMED HIGHLY RELIABLE BUT NOT GUARANTEED.



Disclaimer: Sizes and Dimensions are Approximate, Actual May Vary.



Laura Gilsdorf
720-530-9085
laura.gilsdorf@madisonprops.com
<https://www.laura-homes.com>



Scan code
for more
property
details

