




 Single Family  4445 SQFT  5 Beds  4/1 Baths  2 Car  0.08 Acre

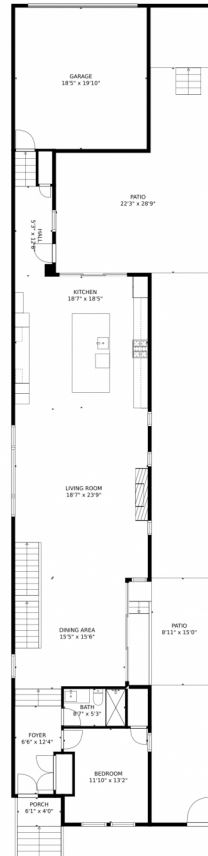
PROPERTY DETAILS

Welcome home! This single family home offers amazing value at \$343/ Sq Ft! With 4,445 finished square feet of brand new construction, this home is a steal! The main floor features a spacious open floor plan with plenty of natural light. The chef's paradise kitchen includes contemporary cabinetry, a gorgeous kitchen, an 11 feet long island, quartz countertops, and high-end stainless-steel appliances. The living room has a cozy fireplace, and the dining area has a built-in buffet for special occasions. The primary bedroom is a true retreat with a fireplace, private deck, and a massive walk-in closet. The primary bathroom is a spa-like oasis with a steam shower, soaking tub, and double vanity. The finished basement has an entertainment area with a wet bar, a bedroom, bathroom, and storage room with washer/dryer hookups. Don't miss this well-priced, must-see home!



Danny Buscarello
720-226-3784
dannyb@remax.net





TOTAL: 3910 sq. ft
Below Ground: 1139 sq. ft, FLOOR 2: 1436 sq. ft, FLOOR 3: 1335 sq. ft
EXCLUDED AREAS: ELECTRICAL ROOM: 48 sq. ft, GARAGE: 365 sq. ft, PORCH: 51 sq. ft,
PATIO: 661 sq. ft, BALCONY: 97 sq. ft

MEASUREMENTS CALCULATED BY V1Photos.com ARE DEEMED HIGHLY RELIABLE BUT NOT GUARANTEED.



Disclaimer: Sizes and Dimensions are Approximate, Actual May Vary.



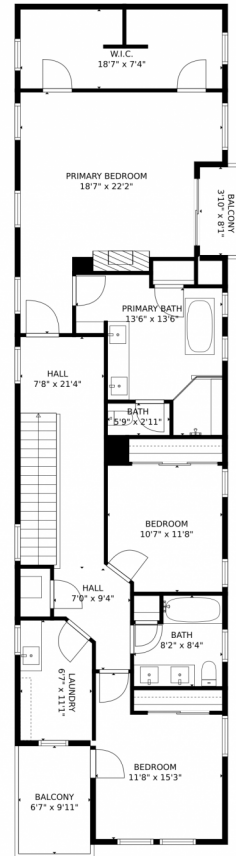
Danny Buscarello
720-226-3784
dannyb@remax.net



Scan code
for more
property
details



4885 W 29th Avenue, Denver, CO 80212 – 2nd Level



TOTAL: 3910 sq. ft

Below Ground: 1139 sq. ft, FLOOR 2: 1436 sq. ft, FLOOR 3: 1335 sq. ft
EXCLUDED AREAS: ELECTRICAL ROOM: 48 sq. ft, GARAGE: 365 sq. ft, PORCH: 51 sq. ft,
PATIO: 661 sq. ft, BALCONY: 97 sq. ft

MEASUREMENTS CALCULATED BY V1Photos.com ARE DEEMED HIGHLY RELIABLE BUT NOT GUARANTEED.

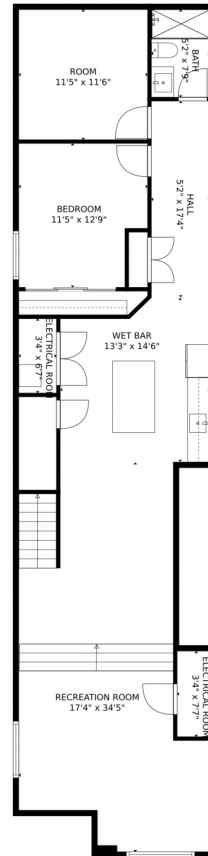


Disclaimer: Sizes and Dimensions are Approximate, Actual May Vary.



Danny Buscarello
720-226-3784
dannyb@remax.net





TOTAL: 3910 sq. ft
Below Ground: 1139 sq. ft, FLOOR 2: 1436 sq. ft, FLOOR 3: 1335 sq. ft
EXCLUDED AREAS: ELECTRICAL ROOM: 48 sq. ft, GARAGE: 365 sq. ft, PORCH: 51 sq. ft,
PATIO: 661 sq. ft, BALCONY: 97 sq. ft

MEASUREMENTS CALCULATED BY V1Photos.com ARE DEEMED HIGHLY RELIABLE BUT NOT GUARANTEED.



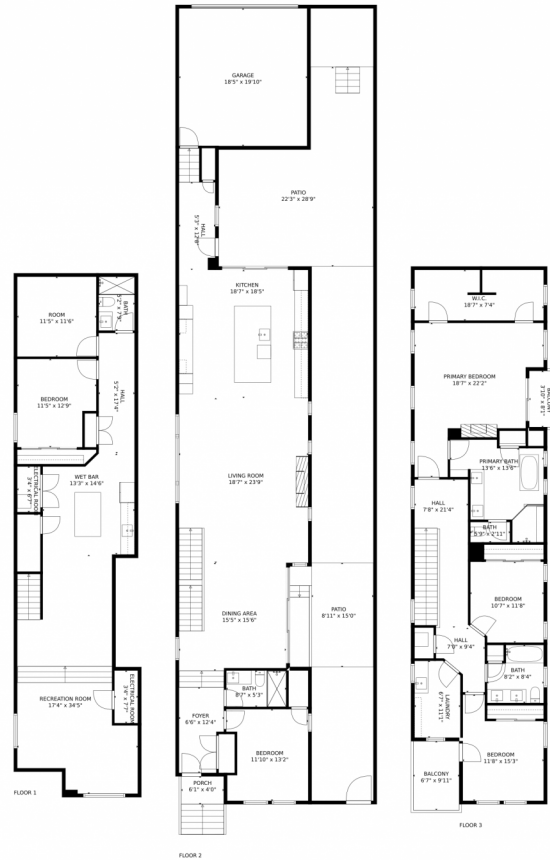
Disclaimer: Sizes and Dimensions are Approximate, Actual May Vary.



Danny Buscarello
720-226-3784
dannyb@remax.net



4885 W 29th Avenue, Denver, CO 80212 – All Levels



TOTAL: 3910 sq. ft

Below Ground: 1139 sq. ft, FLOOR 2: 1436 sq. ft, FLOOR 3: 1335 sq. ft
EXCLUDED AREAS: ELECTRICAL ROOM: 48 sq. ft, GARAGE: 365 sq. ft, PORCH: 51 sq. ft,
PATIO: 661 sq. ft, BALCONY: 97 sq. ft

MEASUREMENTS CALCULATED BY V1Photos.com ARE DEEMED HIGHLY RELIABLE BUT NOT GUARANTEED.



Disclaimer: Sizes and Dimensions are Approximate, Actual May Vary.



Danny Buscarello
720-226-3784
dannyb@remax.net



Scan code
for more
property
details

