



1791 Avery Plaza Street  
 Severance, CO 80550  
 COMMUNITY: Hidden Valley Farm

MLS # IR1008766  
 PRICE \$555,000



Single Family



3530 SQFT



4 Beds



2/1 Baths



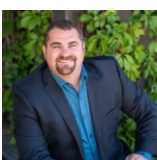
3 Car



0.17 Acre

## PROPERTY DETAILS

Welcome to your dream home in Hidden Valley by St. Aubyn Homes. This beautiful property boasts four bedrooms, three bathrooms, and a three-car tandem garage for plenty of storage. Located on a prime corner lot, it's just one block from Severance Middle School. Don't miss your chance to own this stunning home!



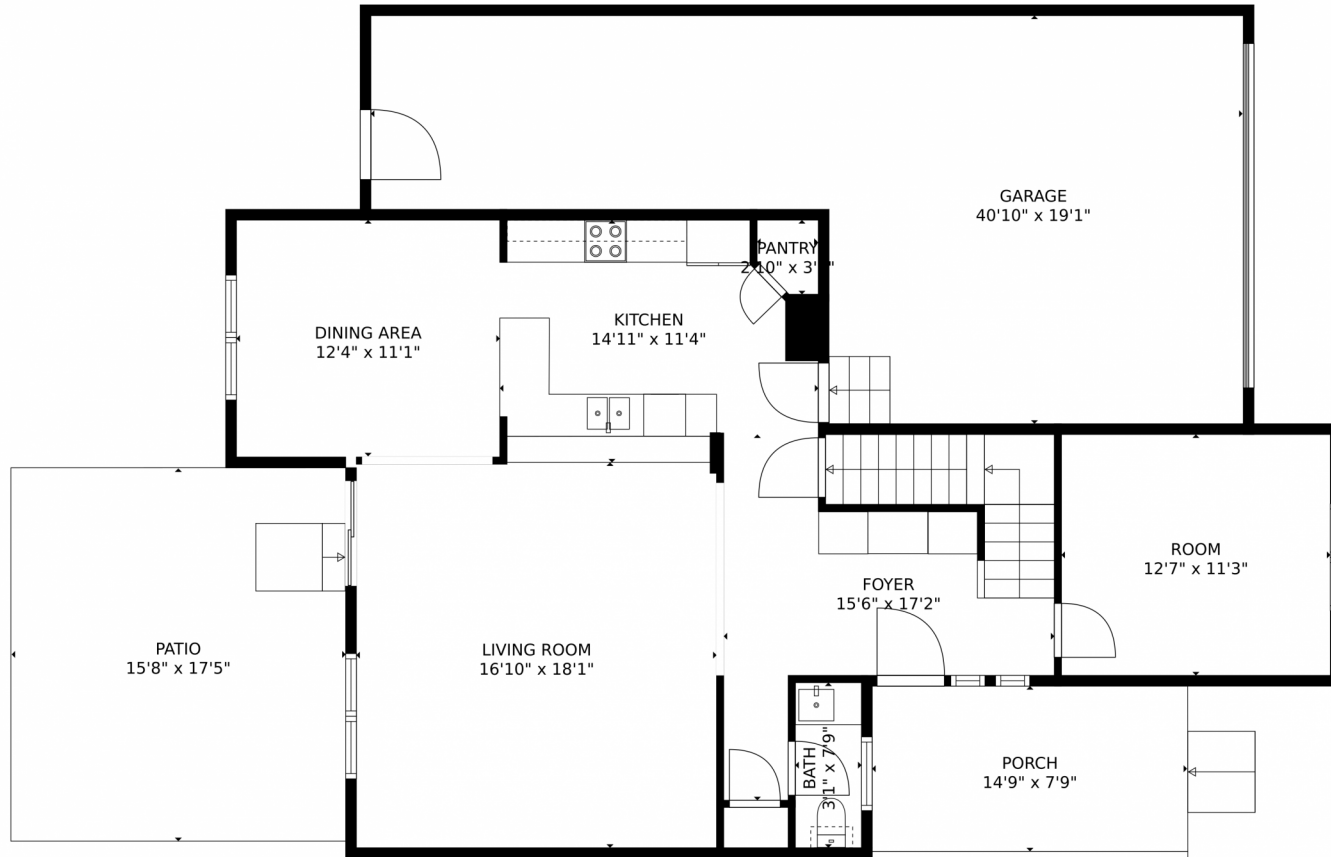
**Brad Inhulsen**  
 970-584-4144  
 brad@yournocorealtor.com



Scan code  
 for more  
 property  
 details



# 1791 Avery Plaza Street, Severance, CO 80550 – Main Level



**TOTAL: 2381 sq. ft**  
Below Ground: 0 sq. ft, FLOOR 2: 985 sq. ft, FLOOR 3: 1396 sq. ft  
EXCLUDED AREAS: BASEMENT: 735 sq. ft, ROOM: 131 sq. ft, GARAGE: 565 sq. ft,  
PORCH: 114 sq. ft, PATIO: 274 sq. ft, OPEN TO BELOW: 65 sq. ft  
MEASUREMENTS CALCULATED BY V1Photos.com ARE DEEMED HIGHLY RELIABLE BUT NOT GUARANTEED.



Disclaimer: Sizes and Dimensions are Approximate, Actual May Vary.



**Brad Inhulsen**  
970-584-4144  
brad@yournocorealtor.com



# 1791 Avery Plaza Street, Severance, CO 80550 – Upper Level



**TOTAL: 2381 sq. ft**  
Below Ground: 0 sq. ft, FLOOR 2: 985 sq. ft, FLOOR 3: 1396 sq. ft  
EXCLUDED AREAS: BASEMENT: 735 sq. ft, ROOM: 131 sq. ft, GARAGE: 565 sq. ft,  
PORCH: 114 sq. ft, PATIO: 274 sq. ft, OPEN TO BELOW: 65 sq. ft  
MEASUREMENTS CALCULATED BY V1Photos.com ARE DEEMED HIGHLY RELIABLE BUT NOT GUARANTEED.



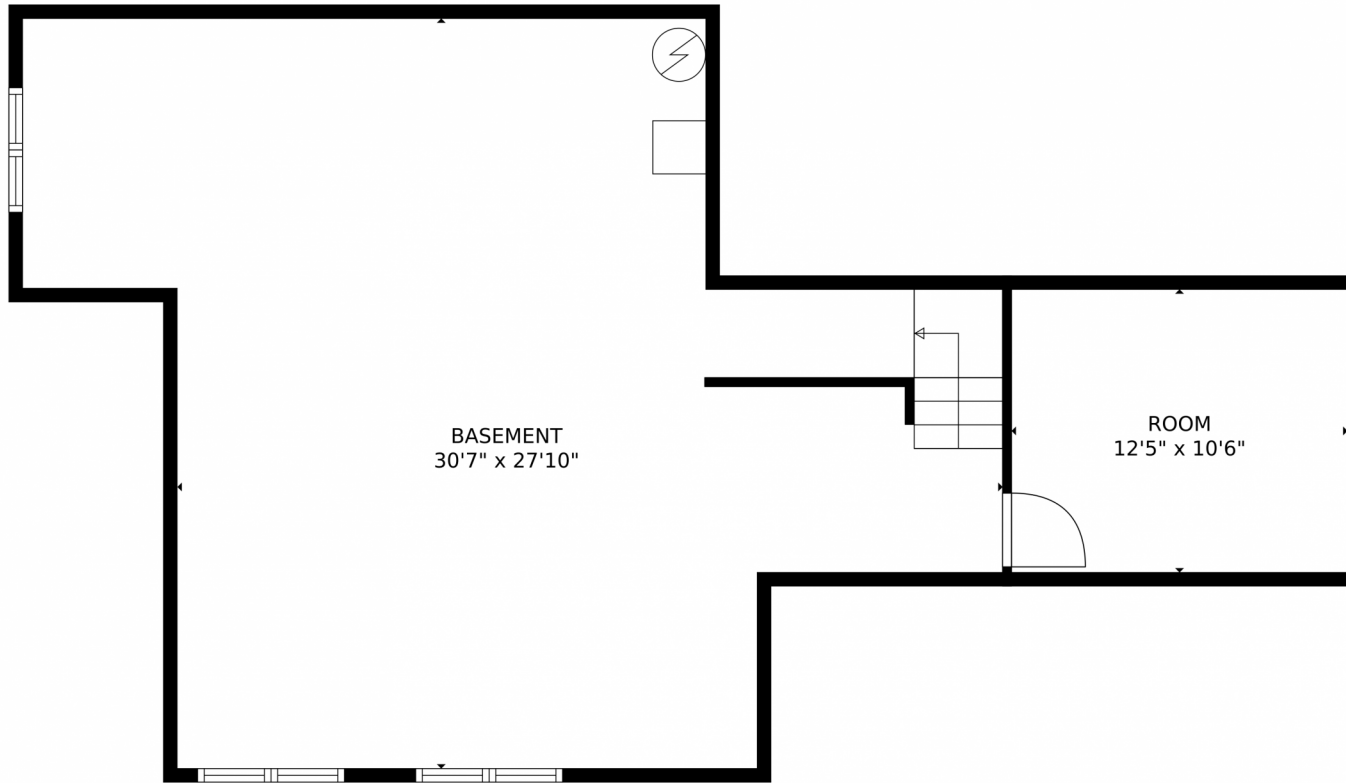
Disclaimer: Sizes and Dimensions are Approximate, Actual May Vary.



**Brad Inhulsen**  
970-584-4144  
brad@yournocorealtor.com



1791 Avery Plaza Street, Severance, CO 80550 – Lower Level



**TOTAL: 2381 sq. ft**  
Below Ground: 0 sq. ft, FLOOR 2: 985 sq. ft, FLOOR 3: 1396 sq. ft  
EXCLUDED AREAS: BASEMENT: 735 sq. ft, ROOM: 131 sq. ft, GARAGE: 565 sq. ft,  
PORCH: 114 sq. ft, PATIO: 274 sq. ft, OPEN TO BELOW: 65 sq. ft  
MEASUREMENTS CALCULATED BY V1Photos.com ARE DEEMED HIGHLY RELIABLE BUT NOT GUARANTEED.



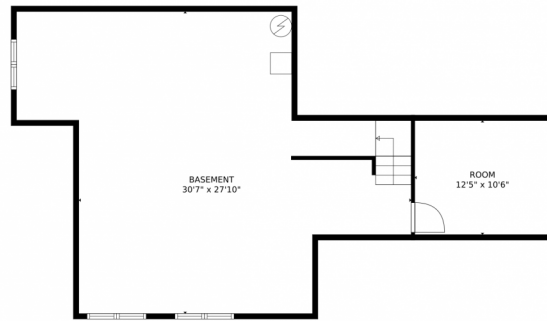
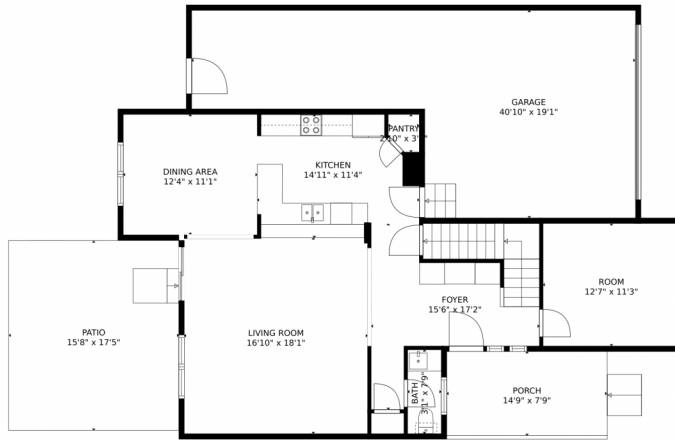
Disclaimer: Sizes and Dimensions are Approximate, Actual May Vary.



**Brad Inhulsen**  
970-584-4144  
brad@yournocorealtor.com



# 1791 Avery Plaza Street, Severance, CO 80550 – All Levels



**TOTAL: 2381 sq. ft**  
Below Ground: 0 sq. ft, FLOOR 2: 985 sq. ft, FLOOR 3: 1396 sq. ft  
EXCLUDED AREAS: BASEMENT: 735 sq. ft, ROOM: 131 sq. ft, GARAGE: 565 sq. ft,  
PORCH: 114 sq. ft, PATIO: 274 sq. ft, OPEN TO BELOW: 65 sq. ft  
MEASUREMENTS CALCULATED BY V1Photos.com ARE DEEMED HIGHLY RELIABLE BUT NOT GUARANTEED.



Disclaimer: Sizes and Dimensions are Approximate, Actual May Vary.



**Brad Inhulsen**  
970-584-4144  
brad@yournocorealtor.com

