

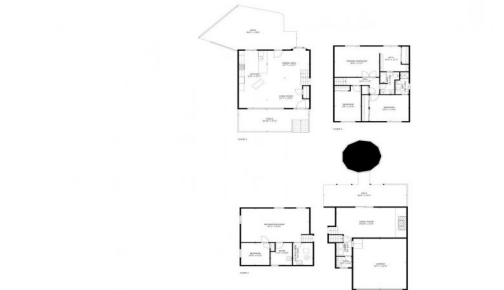


13421 W Wesley Ave  
Lakewood, CO 80228  
COMMUNITY: Green Mountain

MLS # 2139877  
PRICE \$749,000



13421 W Wesley Ave, Lakewood, CO 80228 - 13421 West Wesley Avenue-all-in-one-dim\_0



Single Family



2902 SQFT



4 Beds



2/1 Baths



2 Car



0.17 Acre

## PROPERTY DETAILS

This Green Mountain home has it all! Brazilian cherry hardwood floors, updated kitchen with granite countertops, indoor/outdoor entertaining space, private backyard with hot tub and pool, cozy gas fireplace, spacious primary bedroom with ensuite bathroom, and more. The basement features a large rec room, 4th bedroom, and in-home hair salon. The front deck and landscaped yard are stunning, and the home also includes solar panels for lower electric bills. Located near hiking trails, Red Rocks Amphitheatre, and amenities. Don't miss out, schedule a showing today!



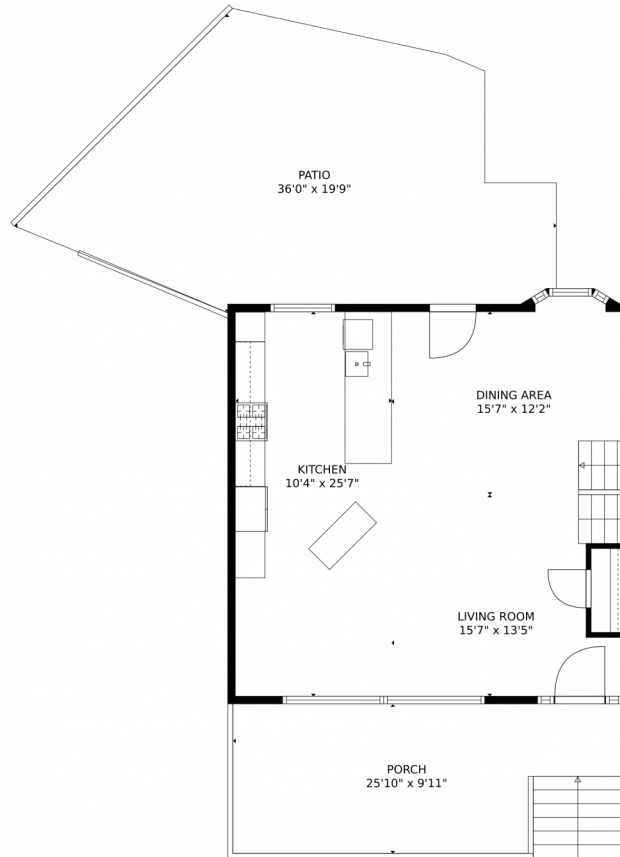
**Amy Cammack**  
303-981-4571  
amy@cammackgroup.com



Scan code  
for more  
property  
details



# 13421 W Wesley Ave, Lakewood, CO 80228 – Main Level



**TOTAL: 2588 sq. ft**  
Below Ground: 577 sq. ft, FLOOR 2: 439 sq. ft, FLOOR 3: 663 sq. ft, FLOOR 4: 909 sq. ft  
EXCLUDED AREAS: ELECTRICAL ROOM: 71 sq. ft, GARAGE: 439 sq. ft, DECK: 322 sq. ft,  
PORCH: 259 sq. ft, PATIO: 482 sq. ft, EMBEDDED WINDOW: 5 sq. ft

MEASUREMENTS CALCULATED BY V1Photos.com ARE DEEMED HIGHLY RELIABLE BUT NOT GUARANTEED.



Disclaimer: Sizes and Dimensions are Approximate, Actual May Vary.



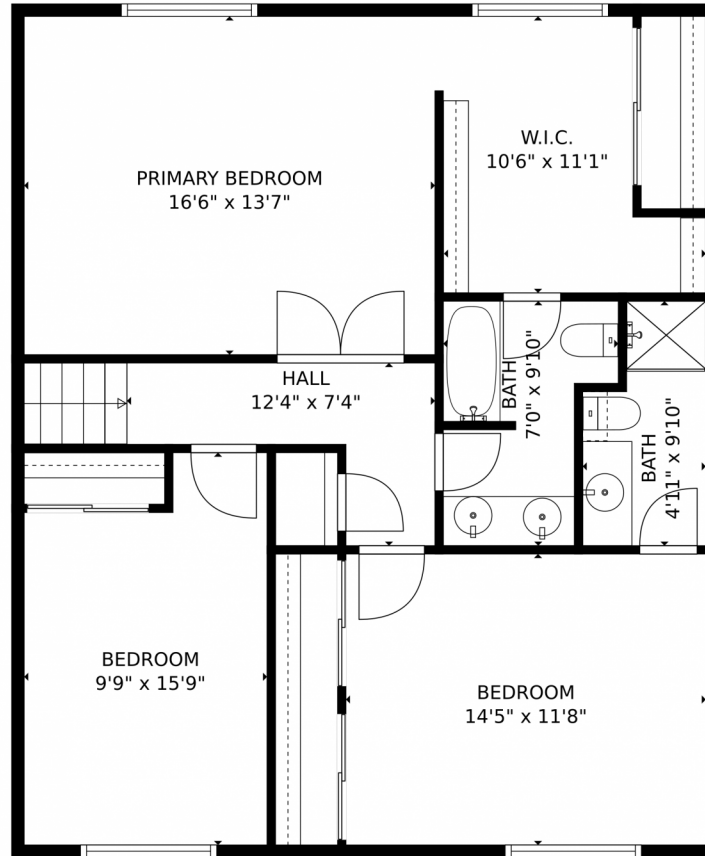
**Amy Cammack**  
303-981-4571  
amy@cammackgroup.com



Scan code  
for more  
property  
details



13421 W Wesley Ave, Lakewood, CO 80228 – Upper Level



**TOTAL: 2588 sq. ft**  
Below Ground: 577 sq. ft, FLOOR 2: 439 sq. ft, FLOOR 3: 663 sq. ft, FLOOR 4: 909 sq. ft  
EXCLUDED AREAS: ELECTRICAL ROOM: 71 sq. ft, GARAGE: 439 sq. ft, DECK: 322 sq. ft,  
PORCH: 259 sq. ft, PATIO: 482 sq. ft, EMBEDDED WINDOW: 5 sq. ft  
MEASUREMENTS CALCULATED BY V1Photos.com ARE DEEMED HIGHLY RELIABLE BUT NOT GUARANTEED.



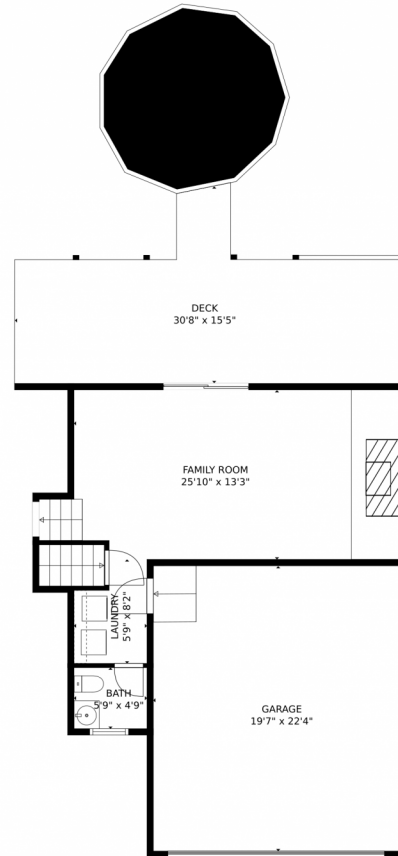
Disclaimer: Sizes and Dimensions are Approximate, Actual May Vary.



**Amy Cammack**  
303-981-4571  
amy@cammackgroup.com



# 13421 W Wesley Ave, Lakewood, CO 80228 – Lower Level



**TOTAL: 2588 sq. ft**  
Below Ground: 577 sq. ft, FLOOR 2: 439 sq. ft, FLOOR 3: 663 sq. ft, FLOOR 4: 909 sq. ft  
EXCLUDED AREAS: ELECTRICAL ROOM: 71 sq. ft, GARAGE: 439 sq. ft, DECK: 322 sq. ft,  
PORCH: 259 sq. ft, PATIO: 482 sq. ft, EMBEDDED WINDOW: 5 sq. ft

MEASUREMENTS CALCULATED BY V1Photos.com ARE DEEMED HIGHLY RELIABLE BUT NOT GUARANTEED.



Disclaimer: Sizes and Dimensions are Approximate, Actual May Vary.

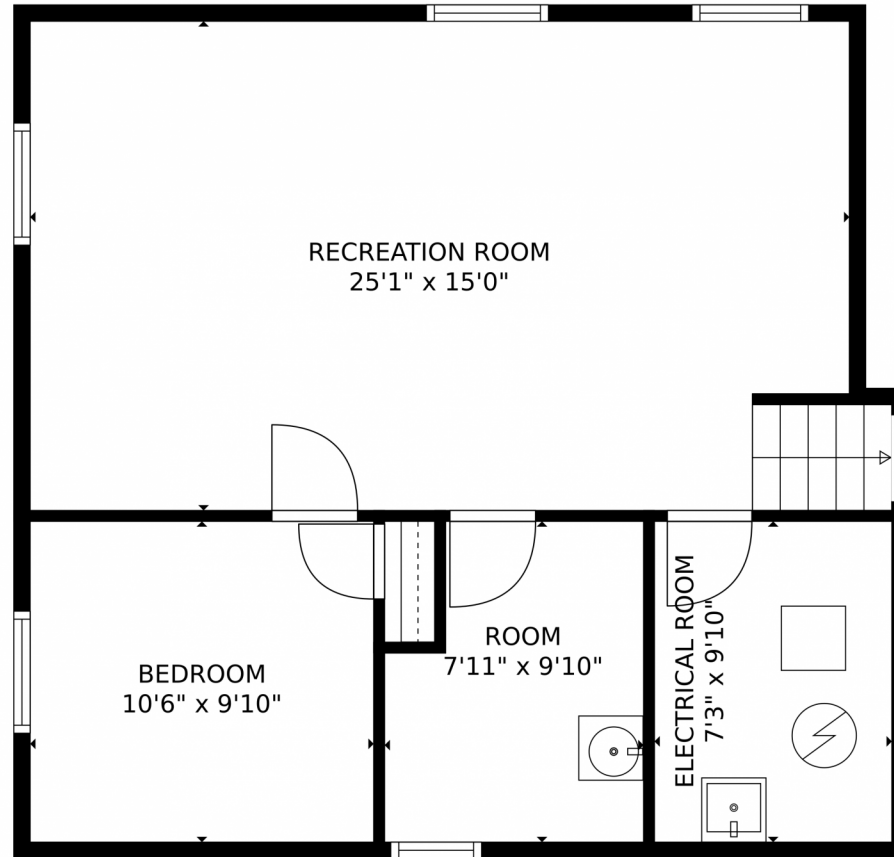


**Amy Cammack**  
303-981-4571  
amy@cammackgroup.com



Scan code  
for more  
property  
details

13421 W Wesley Ave, Lakewood, CO 80228 – Basement Level



**TOTAL: 2588 sq. ft**  
Below Ground: 577 sq. ft, FLOOR 2: 439 sq. ft, FLOOR 3: 663 sq. ft, FLOOR 4: 909 sq. ft  
EXCLUDED AREAS: ELECTRICAL ROOM: 71 sq. ft, GARAGE: 439 sq. ft, DECK: 322 sq. ft,  
PORCH: 259 sq. ft, PATIO: 482 sq. ft, EMBEDDEDWINDOW: 5 sq. ft  
MEASUREMENTS CALCULATED BY V1Photos.com ARE DEEMED HIGHLY RELIABLE BUT NOT GUARANTEED.



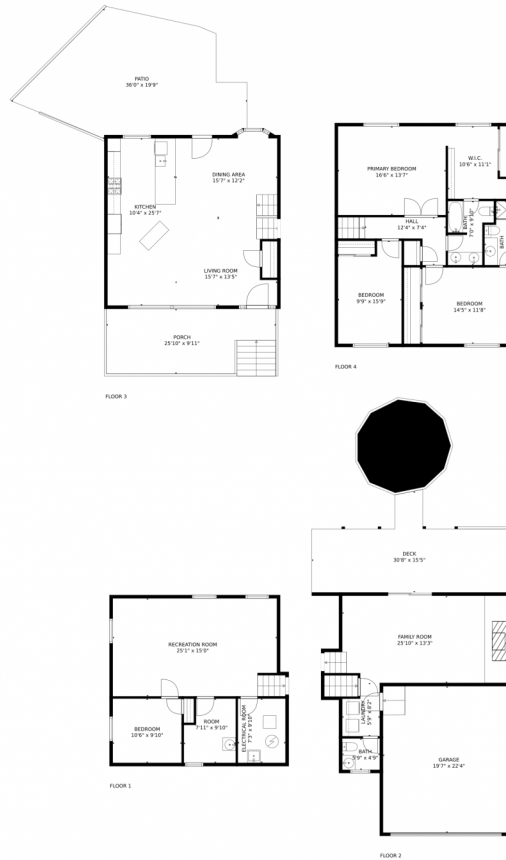
Disclaimer: Sizes and Dimensions are Approximate, Actual May Vary.



**Amy Cammack**  
303-981-4571  
amy@cammackgroup.com



# 13421 W Wesley Ave, Lakewood, CO 80228 – All Levels



**TOTAL: 2588 sq. ft**

Below Ground: 577 sq. ft, FLOOR 2: 439 sq. ft, FLOOR 3: 663 sq. ft, FLOOR 4: 909 sq. ft  
EXCLUDED AREAS: ELECTRICAL ROOM: 71 sq. ft, GARAGE: 439 sq. ft, DECK: 322 sq. ft,  
PORCH: 259 sq. ft, PATIO: 482 sq. ft, EMBEDDED WINDOW: 5 sq. ft

MEASUREMENTS CALCULATED BY V1Photos.com ARE DEEMED HIGHLY RELIABLE BUT NOT GUARANTEED.



Disclaimer: Sizes and Dimensions are Approximate, Actual May Vary.



Amy Cammack  
303-981-4571  
amy@cammackgroup.com



Scan code  
for more  
property  
details

