



6800 W Iowa Avenue  
Lakewood, CO 80232  
COMMUNITY: Cloverdale West

MLS # 1986394  
PRICE \$599,900

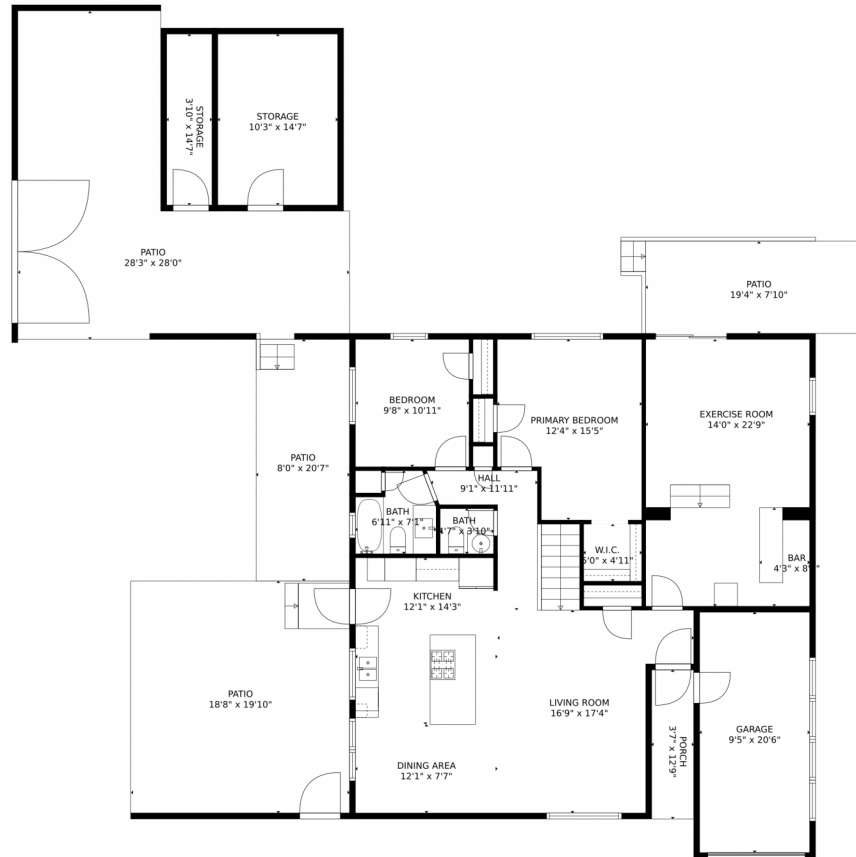


Single Family   2608 SQFT   4 Beds   2/1 Baths   1 Car   0.19 Acre



MARK ZumTobel  
303-909-8808  
ZUM@REALTOR.COM





**TOTAL: 2301 sq. ft**  
Below Ground: 961 sq. ft, FLOOR 2: 1340 sq. ft  
EXCLUDED AREAS: ELECTRICAL ROOM: 40 sq. ft, GARAGE: 193 sq. ft, STORAGE: 205 sq. ft,  
PORCH: 46 sq. ft, PATIO: 1198 sq. ft

MEASUREMENTS CALCULATED BY V1Photos.com ARE DEEMED HIGHLY RELIABLE BUT NOT GUARANTEED.



Disclaimer: Sizes and Dimensions are Approximate, Actual May Vary.



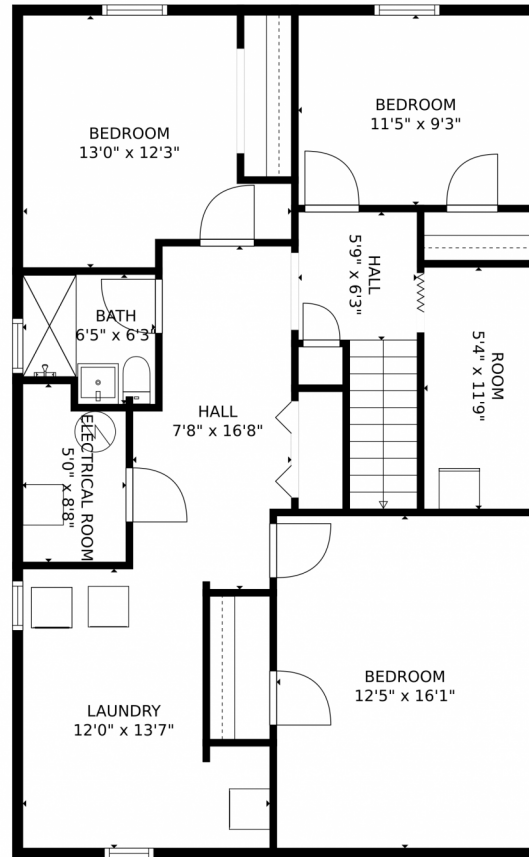
**MARK ZumTobel**  
303-909-8808  
ZUM@REALTOR.COM



Scan code  
for more  
property  
details



6800 W Iowa Avenue, Lakewood, CO 80232 – Lower Level



**TOTAL: 2301 sq. ft**  
Below Ground: 961 sq. ft, FLOOR 2: 1340 sq. ft  
EXCLUDED AREAS: ELECTRICAL ROOM: 40 sq. ft, GARAGE: 193 sq. ft, STORAGE: 205 sq. ft,  
PORCH: 46 sq. ft, PATIO: 1198 sq. ft  
MEASUREMENTS CALCULATED BY V1Photos.com ARE DEEMED HIGHLY RELIABLE BUT NOT GUARANTEED.



Disclaimer: Sizes and Dimensions are Approximate, Actual May Vary.



**MARK ZumTobel**  
303-909-8808  
ZUM@REALTOR.COM



Scan code  
for more  
property  
details



# 6800 W Iowa Avenue, Lakewood, CO 80232 – All Levels



**TOTAL: 2301 sq. ft**  
Below Ground: 961 sq. ft, FLOOR 2: 1340 sq. ft  
EXCLUDED AREAS: ELECTRICAL ROOM: 40 sq. ft, GARAGE: 193 sq. ft, STORAGE: 205 sq. ft,  
PORCH: 46 sq. ft, PATIO: 1198 sq. ft

MEASUREMENTS CALCULATED BY V1Photos.COM ARE DEEMED HIGHLY RELIABLE BUT NOT GUARANTEED.



Disclaimer: Sizes and Dimensions are Approximate, Actual May Vary.



**MARK ZumTobel**  
303-909-8808  
ZUM@REALTOR.COM

