



Single Family



2680 SQFT



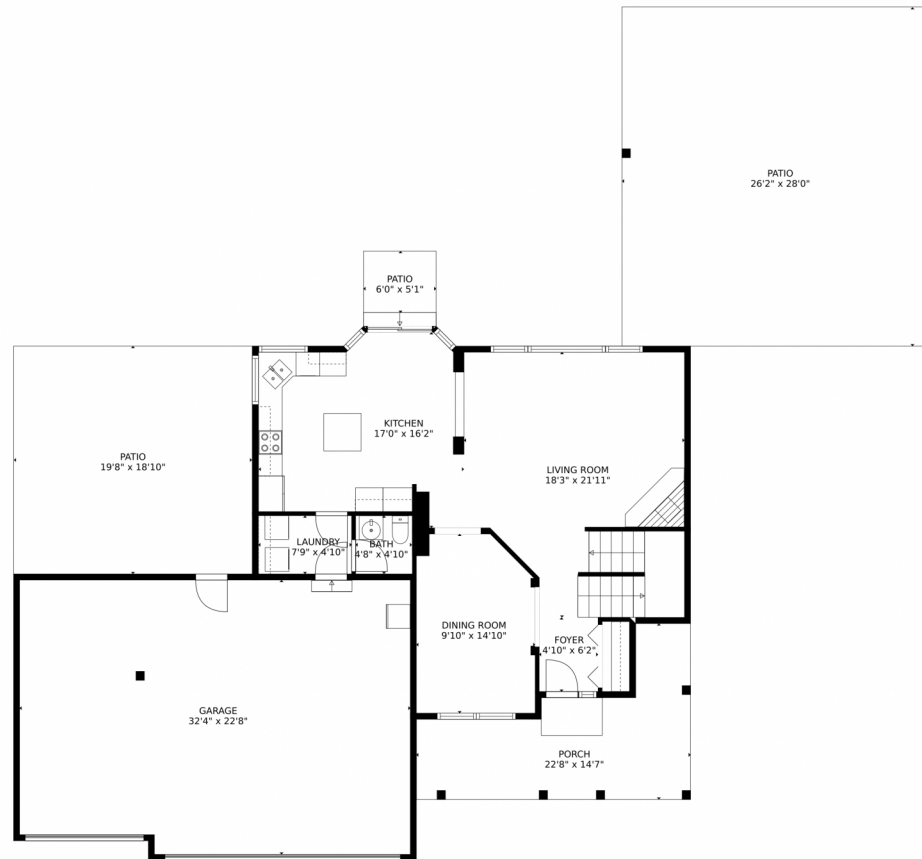
Philip Cooper
970-232-4844
philip.cooper@windermere.com



Scan code
for more
property
details



4282 Alder Creek Lane, Wellington, CO 80549 – Main Level



TOTAL: 2464 sq. ft
Below Ground: 620 sq. ft, FLOOR 2: 863 sq. ft, FLOOR 3: 981 sq. ft
EXCLUDED AREAS: STORAGE: 184 sq. ft, GARAGE: 715 sq. ft, PORCH: 200 sq. ft,
PATIO: 1143 sq. ft, OPEN TO BELOW: 56 sq. ft

MEASUREMENTS CALCULATED BY V1Photos.com ARE DEEMED HIGHLY RELIABLE BUT NOT GUARANTEED.



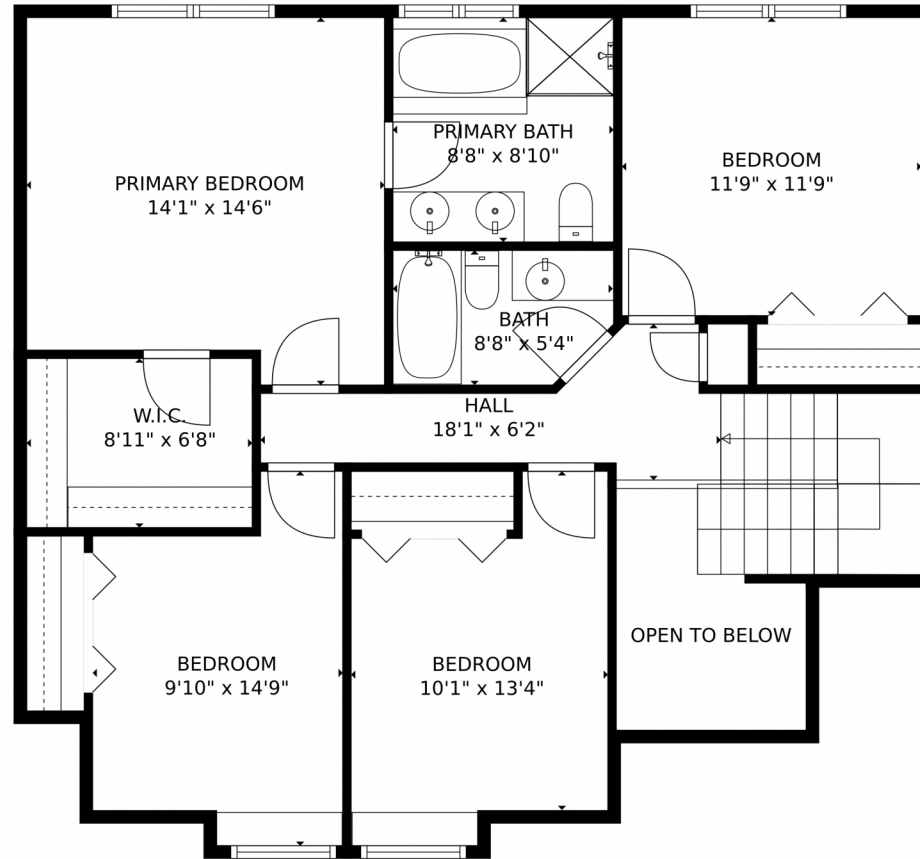
Disclaimer: Sizes and Dimensions are Approximate, Actual May Vary.



Philip Cooper
970-232-4844
philip.cooper@windermere.com



4282 Alder Creek Lane, Wellington, CO 80549 – Upper Level



TOTAL: 2464 sq. ft
Below Ground: 620 sq. ft, FLOOR 2: 863 sq. ft, FLOOR 3: 981 sq. ft
EXCLUDED AREAS: STORAGE: 184 sq. ft, GARAGE: 715 sq. ft, PORCH: 200 sq. ft,
PATIO: 1143 sq. ft, OPEN TO BELOW: 56 sq. ft
MEASUREMENTS CALCULATED BY V1Photos.com ARE DEEMED HIGHLY RELIABLE BUT NOT GUARANTEED.



Disclaimer: Sizes and Dimensions are Approximate, Actual May Vary.

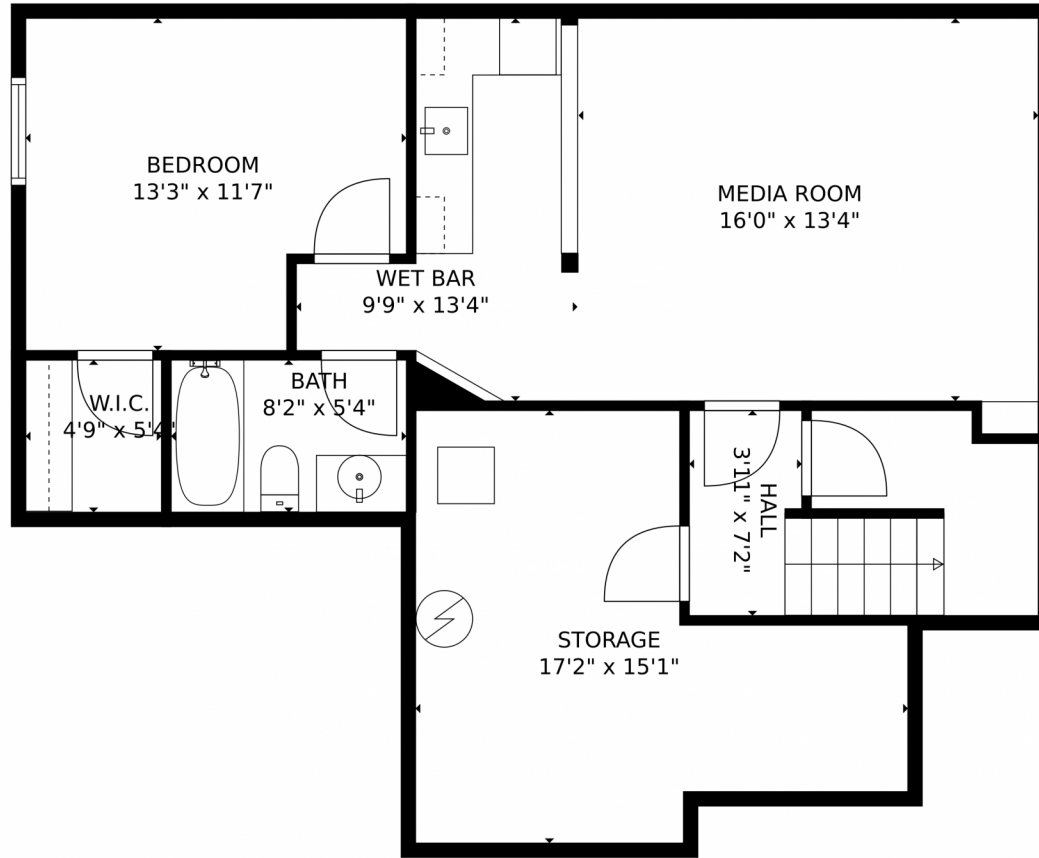


Philip Cooper
970-232-4844
philip.cooper@windermere.com



Scan code
for more
property
details

4282 Alder Creek Lane, Wellington, CO 80549 – Lower Level



TOTAL: 2464 sq. ft
Below Ground: 620 sq. ft, FLOOR 2: 863 sq. ft, FLOOR 3: 981 sq. ft
EXCLUDED AREAS: STORAGE: 184 sq. ft, GARAGE: 715 sq. ft, PORCH: 200 sq. ft,
PATIO: 1143 sq. ft, OPEN TO BELOW: 56 sq. ft
MEASUREMENTS CALCULATED BY V1Photos.com ARE DEEMED HIGHLY RELIABLE BUT NOT GUARANTEED.



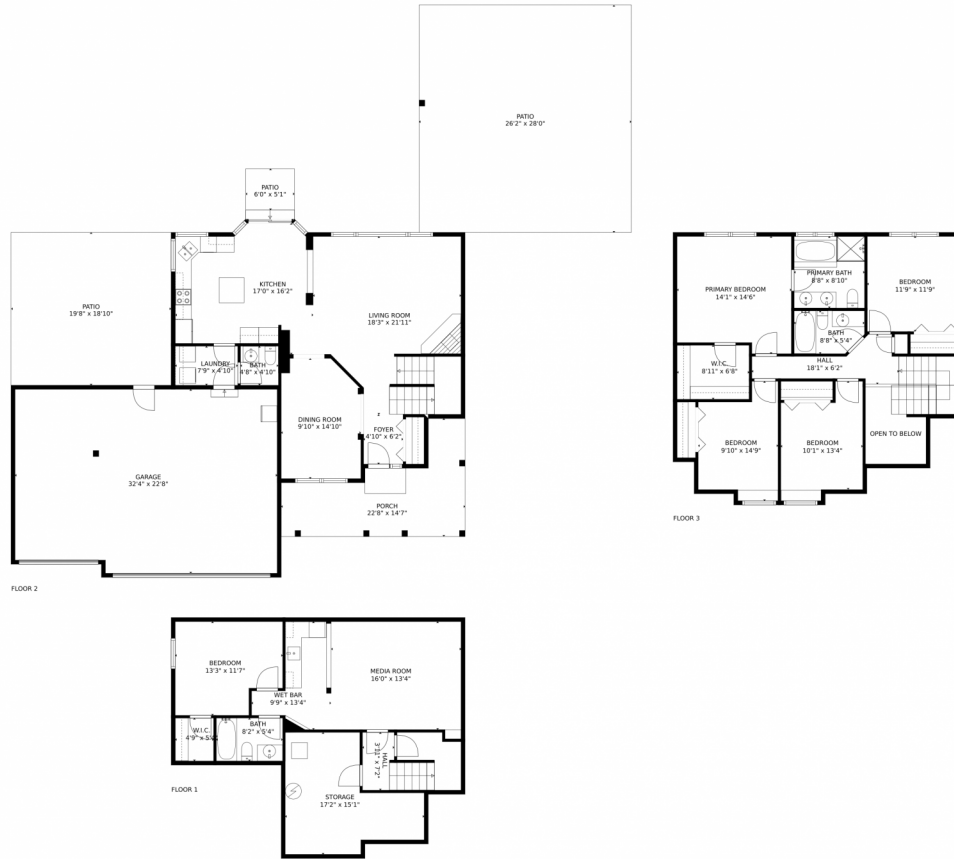
Disclaimer: Sizes and Dimensions are Approximate, Actual May Vary.



Philip Cooper
970-232-4844
philip.cooper@windermere.com



4282 Alder Creek Lane, Wellington, CO 80549 – All Levels



TOTAL: 2464 sq. ft
Below Ground: 620 sq. ft, FLOOR 2: 863 sq. ft, FLOOR 3: 981 sq. ft
EXCLUDED AREAS: STORAGE: 184 sq. ft, GARAGE: 715 sq. ft, PORCH: 200 sq. ft,
PATIO: 1143 sq. ft, OPEN TO BELOW: 56 sq. ft

MEASUREMENTS CALCULATED BY V1Photos.com ARE DEEMED HIGHLY RELIABLE BUT NOT GUARANTEED.



Disclaimer: Sizes and Dimensions are Approximate, Actual May Vary.



Philip Cooper
970-232-4844
philip.cooper@windermere.com

