


6212 Kilmer Loop, Arvada, CO 80403 - All Levels



 Single Family

 1064 SQFT

 1 Bed

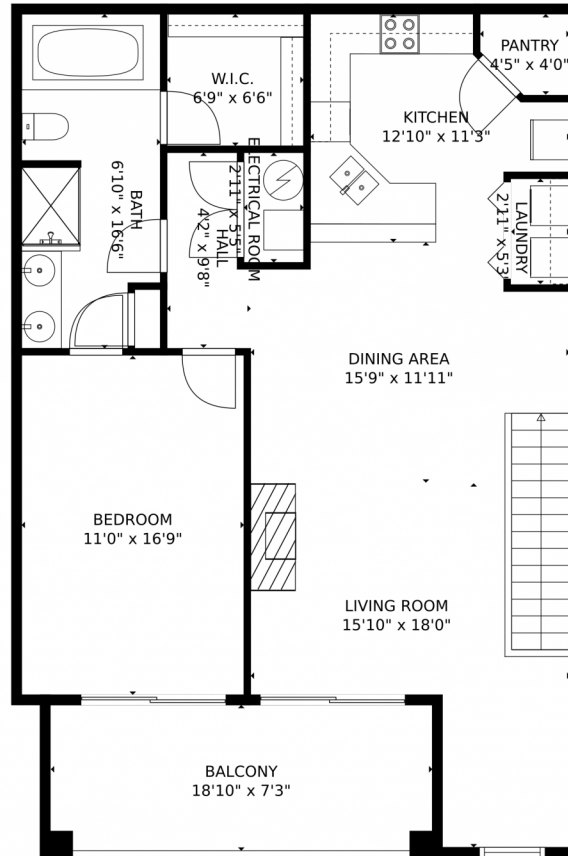
 1 Baths



**Taylor Haas**  
 303-665-7368  
 taylorh@coloradorpm.com  
<https://www.coloradorpm.com/available-rental-properties-denver>



# 6212 Kilmer Loop, Arvada, CO 80403 – Main Level



**TOTAL: 1023 sq. ft**  
Below Ground: 78 sq. ft, FLOOR 2: 945 sq. ft  
EXCLUDED AREAS: PORCH: 41 sq. ft, ELECTRICAL ROOM: 16 sq. ft, BALCONY: 143 sq. ft  
MEASUREMENTS CALCULATED BY V1Photos.com ARE DEEMED HIGHLY RELIABLE BUT NOT GUARANTEED.



Disclaimer: Sizes and Dimensions are Approximate, Actual May Vary.



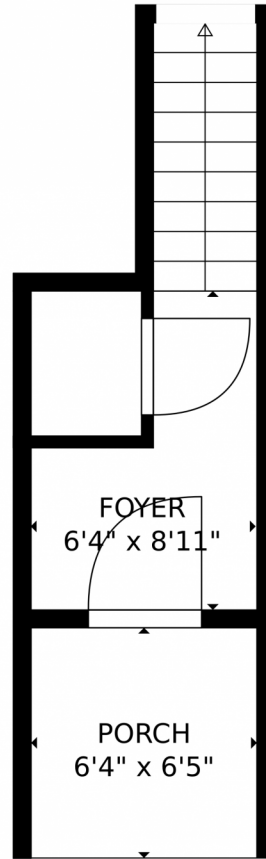
**Taylor Haas**  
303-665-7368  
taylorh@coloradorpm.com  
<https://www.coloradorpm.com/available-rental-properties-denver>



Scan code  
for more  
property  
details



6212 Kilmer Loop, Arvada, CO 80403 – Lower Level



**TOTAL: 1023 sq. ft**  
Below Ground: 78 sq. ft, FLOOR 2: 945 sq. ft  
EXCLUDED AREAS: PORCH: 41 sq. ft, ELECTRICAL ROOM: 16 sq. ft, BALCONY: 143 sq. ft  
MEASUREMENTS CALCULATED BY V1Photos.com ARE DEEMED HIGHLY RELIABLE BUT NOT GUARANTEED.



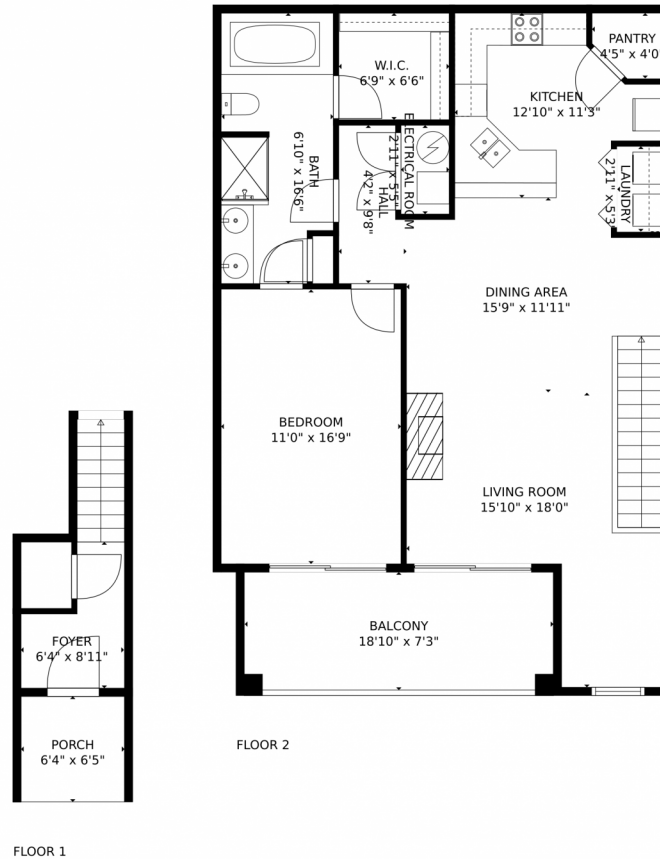
Disclaimer: Sizes and Dimensions are Approximate, Actual May Vary.



**Taylor Haas**  
303-665-7368  
taylorh@coloradorpm.com  
<https://www.coloradorpm.com/available-rental-properties-denver>



# 6212 Kilmer Loop, Arvada, CO 80403 – All Levels



**TOTAL: 1023 sq. ft**  
Below Ground: 78 sq. ft, FLOOR 2: 945 sq. ft  
EXCLUDED AREAS: PORCH: 41 sq. ft, ELECTRICAL ROOM: 16 sq. ft, BALCONY: 143 sq. ft  
MEASUREMENTS CALCULATED BY V1Photos.com ARE DEEMED HIGHLY RELIABLE BUT NOT GUARANTEED.



Disclaimer: Sizes and Dimensions are Approximate, Actual May Vary.



**Taylor Haas**  
303-665-7368  
taylorh@coloradorpm.com  
<https://www.coloradorpm.com/available-rental-properties-denver>

