



9022 Jason Court
 Boulder, CO 80303
 COMMUNITY: White Hawk Ranch

MLS # 6718992
 PRICE \$4,250,000



Single Family



8182 SQFT



6 Beds



5/2 Baths



3 Car



1.35 Acre

PROPERTY DETAILS

A private and dream retreat on more than an acre, pairs luxury and location; 8182 SQFT private oasis and entertainer's dream on 1.35 acres.



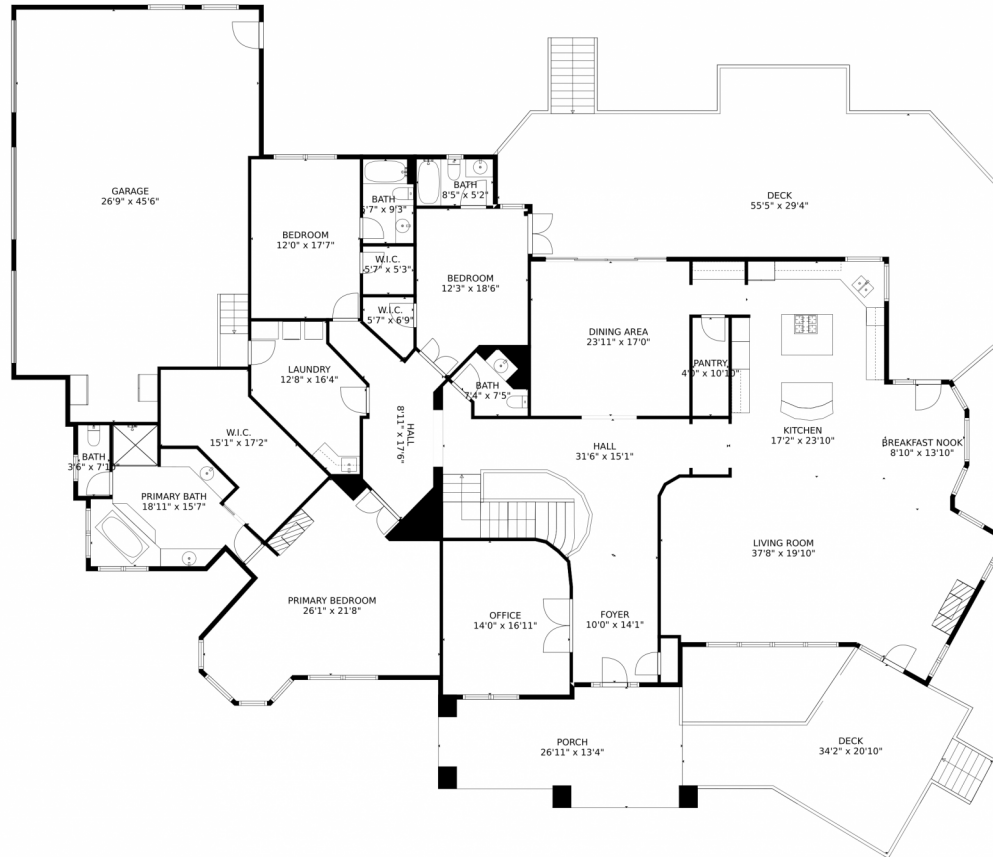
Amanda Khoury
 312-498-3835
 amandakhoury@mylokation.com



Scan code
 for more
 property
 details



9022 Jason Court, Boulder, CO 80303 – main level



TOTAL: 7867 sq. ft
Below Ground: 3725 sq. ft, FLOOR 2: 4142 sq. ft
EXCLUDED AREAS: ELECTRICAL ROOM: 84 sq. ft, GARAGE: 1091 sq. ft, DECK: 1507 sq. ft,
PORCH: 312 sq. ft

MEASUREMENTS CALCULATED BY V1Photos.com ARE DEEMED HIGHLY RELIABLE BUT NOT GUARANTEED.



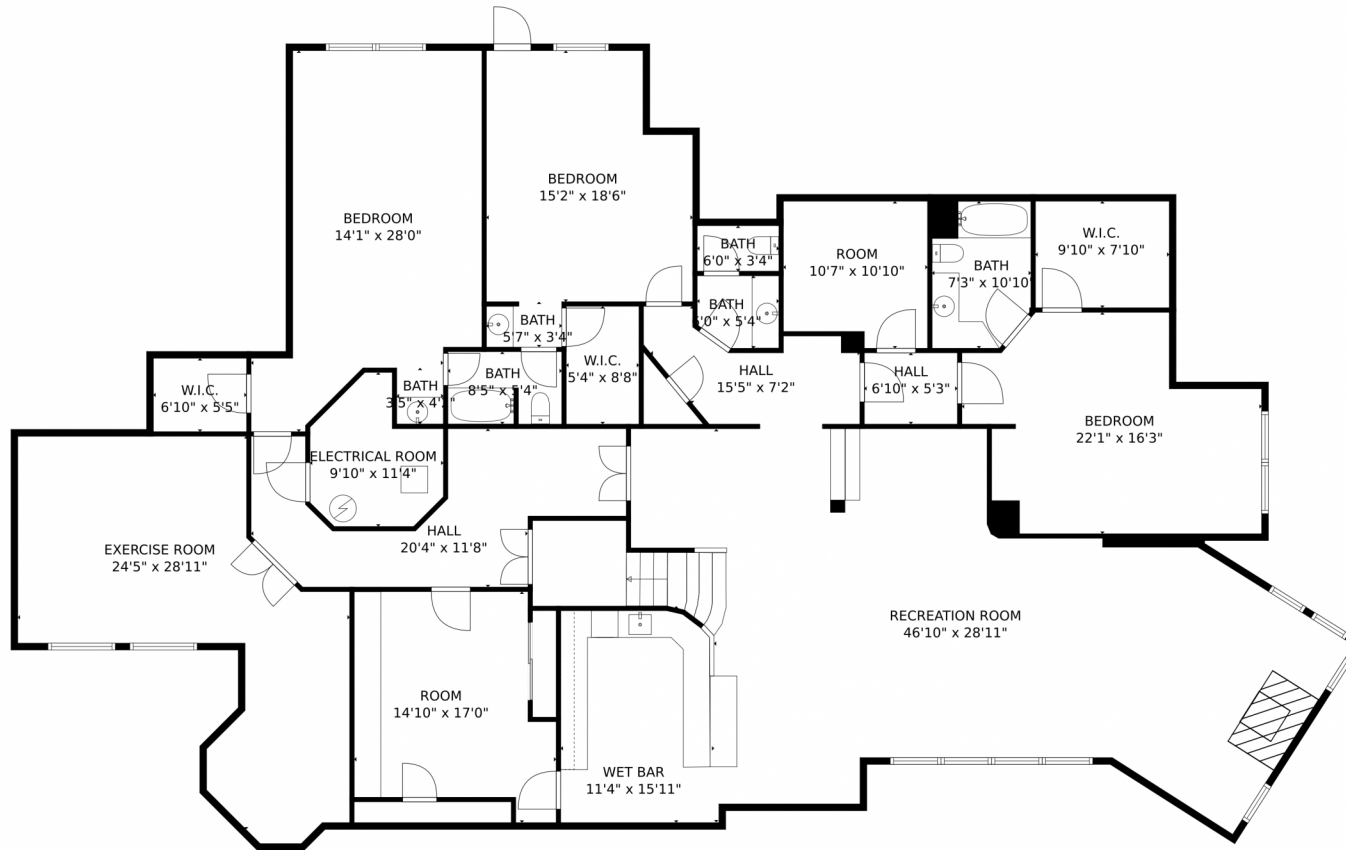
Disclaimer: Sizes and Dimensions are Approximate, Actual May Vary.



Amanda Khoury
312-498-3835
amandakhoury@mylokation.com



9022 Jason Court, Boulder, CO 80303 – lower level



TOTAL: 7867 sq. ft
Below Ground: 3725 sq. ft, FLOOR 2: 4142 sq. ft
EXCLUDED AREAS: ELECTRICAL ROOM: 84 sq. ft, GARAGE: 1091 sq. ft, DECK: 1507 sq. ft,
PORCH: 312 sq. ft

MEASUREMENTS CALCULATED BY V1Photos.com ARE DEEMED HIGHLY RELIABLE BUT NOT GUARANTEED.



Disclaimer: Sizes and Dimensions are Approximate, Actual May Vary.

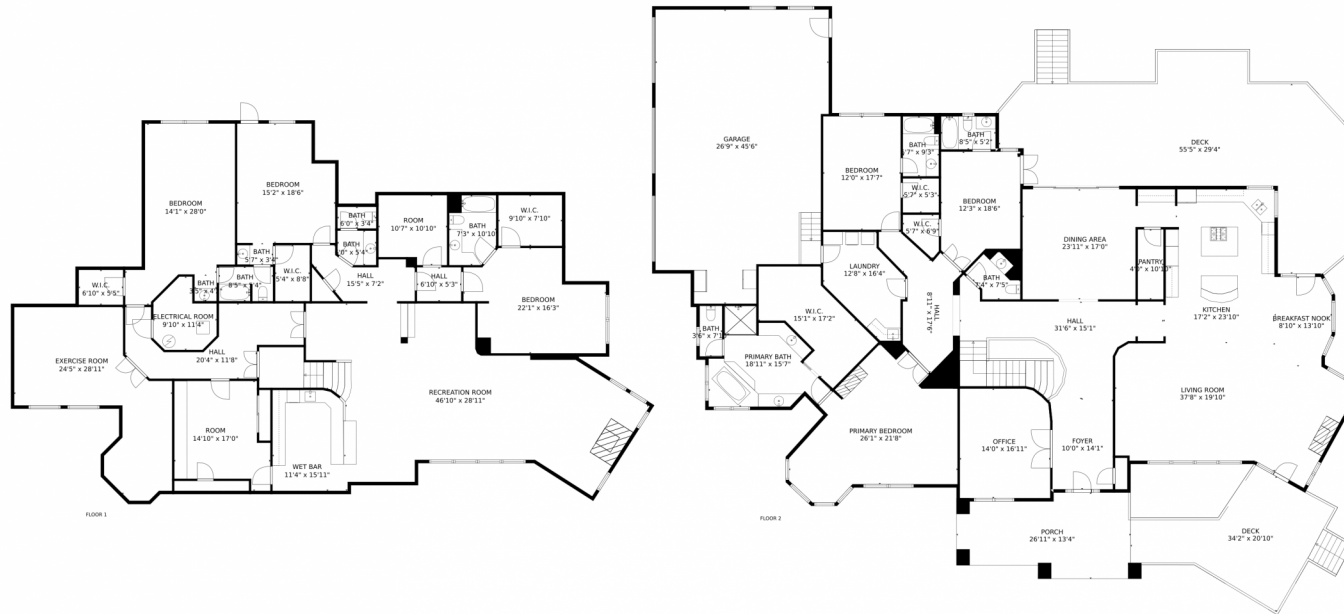


Amanda Khoury
312-498-3835
amandakhoury@mylokation.com



Scan code
for more
property
details

9022 Jason Court, Boulder, CO 80303 – all levels



TOTAL: 7867 sq. ft
Below Ground: 3725 sq. ft, FLOOR 2: 4142 sq. ft
EXCLUDED AREAS: ELECTRICAL ROOM: 84 sq. ft, GARAGE: 1091 sq. ft, DECK: 1507 sq. ft,
PORCH: 312 sq. ft

MEASUREMENTS CALCULATED BY V1Photos.com ARE DEEMED HIGHLY RELIABLE BUT NOT GUARANTEED.



Disclaimer: Sizes and Dimensions are Approximate, Actual May Vary.



Amanda Khoury
312-498-3835
amandakhoury@mylokation.com

