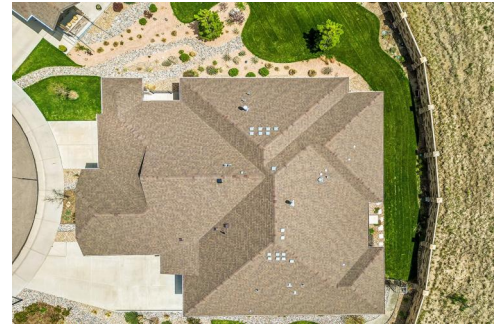










3545 New Haven Circle  
 Castle Rock, CO 80109  
 COMMUNITY: The Meadows



 Single Family  
  1653 SQFT  
  3 Beds  
  3/1 Baths  
  2 Car  
  0.15 Acre

## PROPERTY DETAILS

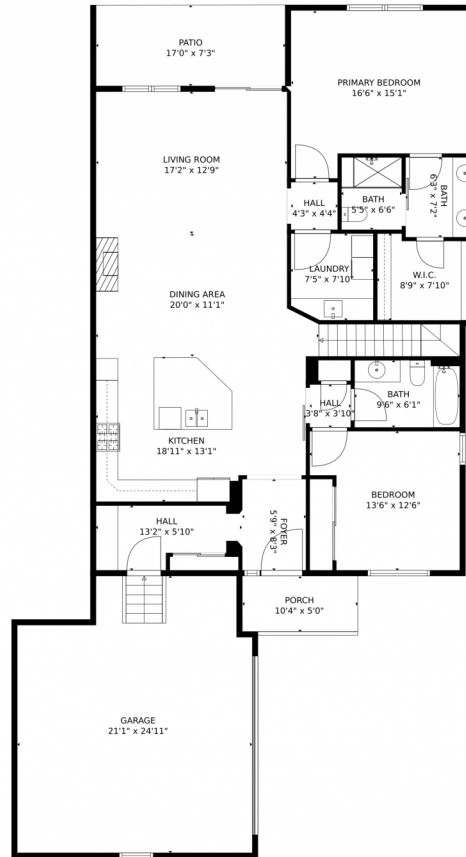
Presenting a move-in ready attached ranch style home in the Meadows neighborhood. This 3 bedroom, 3 bath beauty features a gourmet kitchen with quartz countertops and stainless appliances. The main floor offers an open layout with a spacious living room and gas fireplace. The primary suite includes a double vanity and oversized shower. The basement is designed for entertainment with a billiards room and theater. Residents have access to The Grange at Castle Rock for meetings and events, as well as a pool and miles of trails. This home is located in the award-winning Douglas County School District and offers plenty of nearby dining and shopping options.



**Jerry Haberkorn**  
 303-919-5032  
 jhaberkorn@remax.net



# 3545 New Haven Circle, Castle Rock, CO 80109 – Main



**TOTAL: 2722 sq. ft**  
Below Ground: 1163 sq. ft, FLOOR 2: 1559 sq. ft  
EXCLUDED AREAS: STORAGE: 263 sq. ft, PATIO: 124 sq. ft, PORCH: 52 sq. ft,  
GARAGE: 488 sq. ft

MEASUREMENTS CALCULATED BY V1Photos.com ARE DEEMED HIGHLY RELIABLE BUT NOT GUARANTEED.



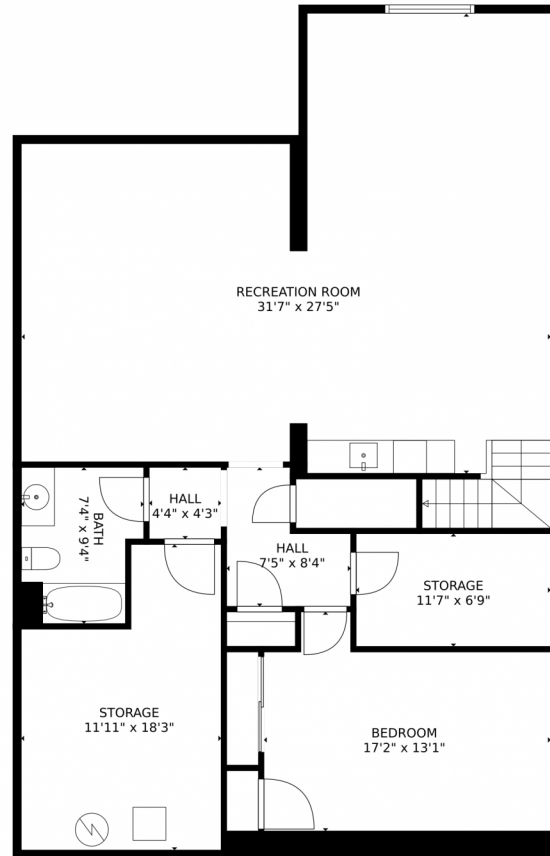
Disclaimer: Sizes and Dimensions are Approximate, Actual May Vary.



**Jerry Haberkorn**  
303-919-5032  
jhaberkorn@remax.net



# 3545 New Haven Circle, Castle Rock, CO 80109 – Lower Level



**TOTAL: 2722 sq. ft**  
Below Ground: 1163 sq. ft, FLOOR 2: 1559 sq. ft  
EXCLUDED AREAS: STORAGE: 263 sq. ft, PATIO: 124 sq. ft, PORCH: 52 sq. ft,  
GARAGE: 488 sq. ft

MEASUREMENTS CALCULATED BY V1Photos.com ARE DEEMED HIGHLY RELIABLE BUT NOT GUARANTEED.



Disclaimer: Sizes and Dimensions are Approximate, Actual May Vary.

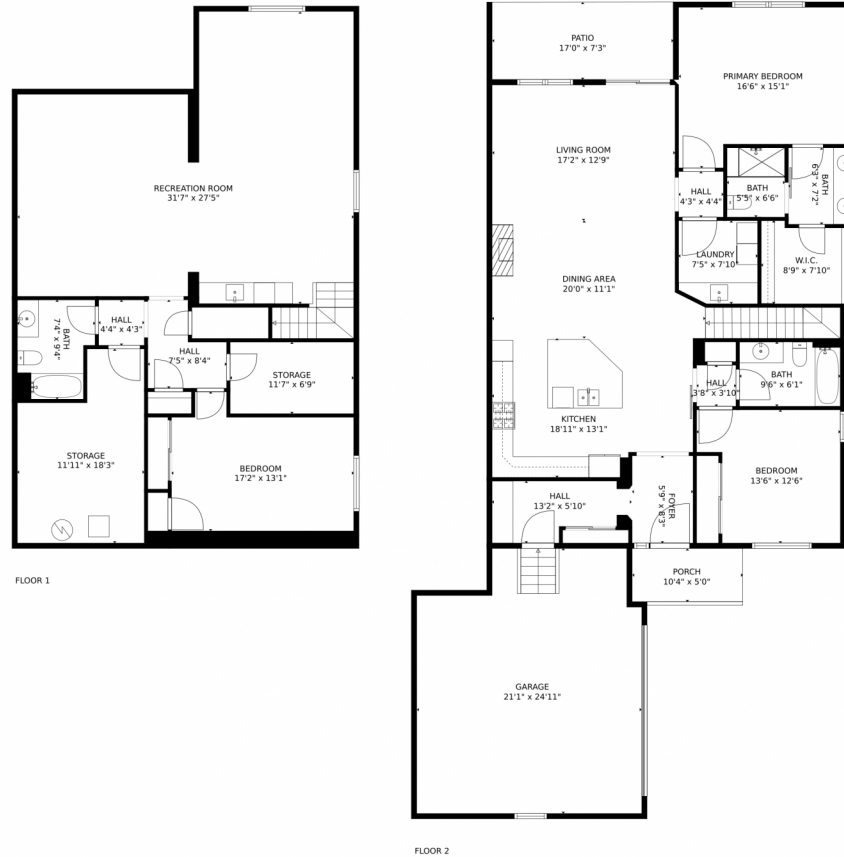


**Jerry Haberkorn**  
303-919-5032  
jhaberkorn@remax.net





# 3545 New Haven Circle, Castle Rock, CO 80109 – All Levels



**TOTAL: 2722 sq. ft**  
Below Ground: 1163 sq. ft, FLOOR 2: 1559 sq. ft  
EXCLUDED AREAS: STORAGE: 263 sq. ft, PATIO: 124 sq. ft, PORCH: 52 sq. ft,  
GARAGE: 488 sq. ft

MEASUREMENTS CALCULATED BY V1Photos.com ARE DEEMED HIGHLY RELIABLE BUT NOT GUARANTEED.



Disclaimer: Sizes and Dimensions are Approximate, Actual May Vary.



**Jerry Haberkorn**  
303-919-5032  
jhaberkorn@remax.net

