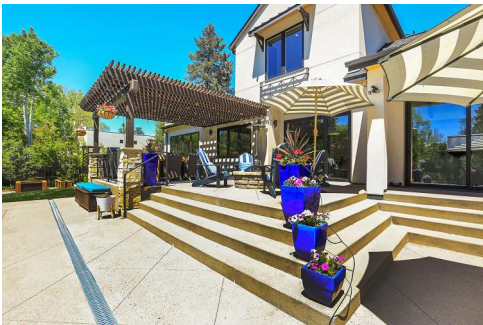




2321 South Garfield Street
 Denver, CO 80210



2321 South Garfield Street, Denver, CO 80210 - main level



 Single Family

 7500 SQFT

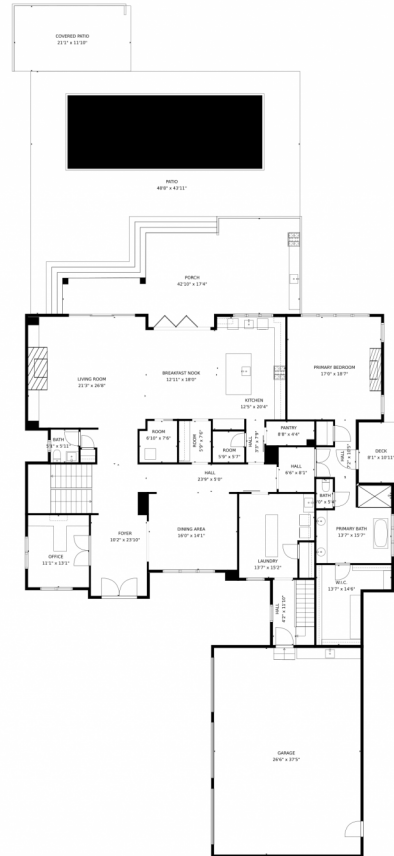
 3 Car



Jaden Combs
 303-324-1437
 jaden@kentwood.com



2321 South Garfield Street, Denver, CO 80210 — main level



TOTAL: 6648 sq. ft
Below Ground: 2086 sq. ft, FLOOR 2: 3172 sq. ft, FLOOR 3: 1390 sq. ft
EXCLUDED AREAS: STORAGE: 122 sq. ft, ELECTRICAL ROOM: 184 sq. ft, GARAGE: 992 sq. ft,
DECK: 89 sq. ft, COVERED PATIO: 249 sq. ft, PATIO: 1124 sq. ft,
PORCH: 575 sq. ft, OPEN TO BELOW: 148 sq. ft

MEASUREMENTS CALCULATED BY V1Photos.com ARE DEEMED HIGHLY RELIABLE BUT NOT GUARANTEED.



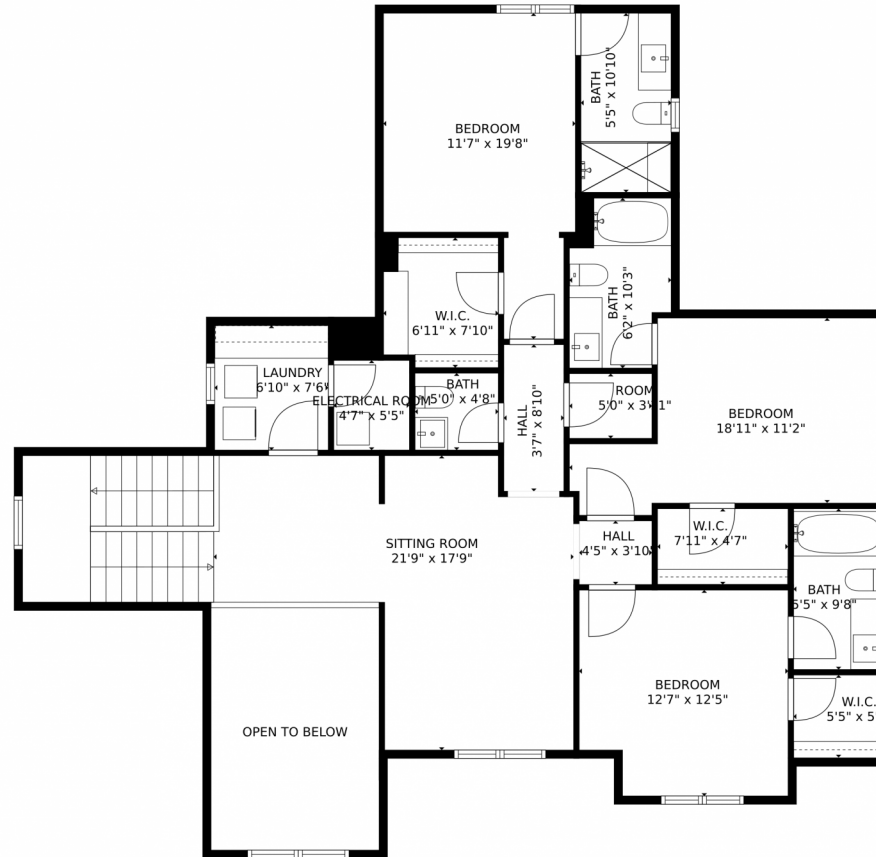
Disclaimer: Sizes and Dimensions are Approximate, Actual May Vary.



Jaden Combs
303-324-1437
jaden@kentwood.com



2321 South Garfield Street, Denver, CO 80210 — upper level



TOTAL: 6648 sq. ft
Below Ground: 2086 sq. ft, FLOOR 2: 3172 sq. ft, FLOOR 3: 1390 sq. ft
EXCLUDED AREAS: STORAGE: 122 sq. ft, ELECTRICAL ROOM: 184 sq. ft, GARAGE: 992 sq. ft,
DECK: 89 sq. ft, COVERED PATIO: 249 sq. ft, PATIO: 1124 sq. ft,
PORCH: 575 sq. ft, OPEN TO BELOW: 148 sq. ft

MEASUREMENTS CALCULATED BY V1Photos.com ARE DEEMED HIGHLY RELIABLE BUT NOT GUARANTEED.



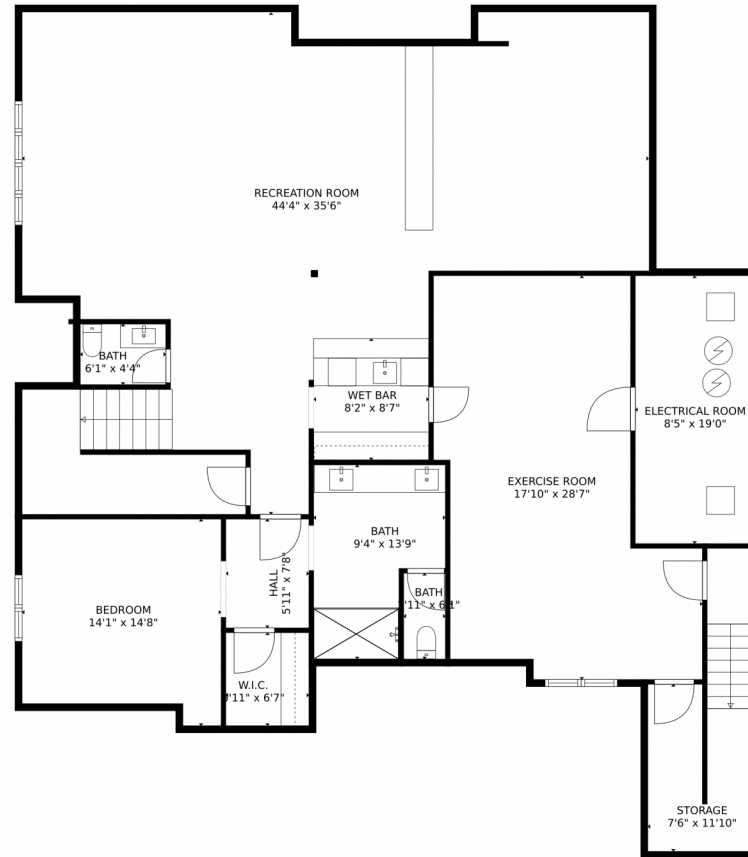
Disclaimer: Sizes and Dimensions are Approximate, Actual May Vary.



Jaden Combs
303-324-1437
jaden@kentwood.com



2321 South Garfield Street, Denver, CO 80210 – lower level



TOTAL: 6648 sq. ft
Below Ground: 2086 sq. ft, FLOOR 2: 3172 sq. ft, FLOOR 3: 1390 sq. ft
EXCLUDED AREAS: STORAGE: 122 sq. ft, ELECTRICAL ROOM: 184 sq. ft, GARAGE: 992 sq. ft,
DECK: 89 sq. ft, COVERED PATIO: 249 sq. ft, PATIO: 1124 sq. ft,
PORCH: 575 sq. ft, OPEN TO BELOW: 148 sq. ft

MEASUREMENTS CALCULATED BY V1Photos.com ARE DEEMED HIGHLY RELIABLE BUT NOT GUARANTEED.



Disclaimer: Sizes and Dimensions are Approximate, Actual May Vary.



Jaden Combs
303-324-1437
jaden@kentwood.com



2321 South Garfield Street, Denver, CO 80210 – all levels



TOTAL: 6648 sq. ft
Below Ground: 2086 sq. ft, FLOOR 2: 3172 sq. ft, FLOOR 3: 1390 sq. ft
EXCLUDED AREAS: STORAGE: 122 sq. ft, ELECTRICAL ROOM: 184 sq. ft, GARAGE: 992 sq. ft,
DECK: 89 sq. ft, COVERED PATIO: 249 sq. ft, PATIO: 1124 sq. ft,
PORCH: 575 sq. ft, OPEN TO BELOW: 148 sq. ft

MEASUREMENTS CALCULATED BY V1Photos.com ARE DEEMED HIGHLY RELIABLE BUT NOT GUARANTEED.



Disclaimer: Sizes and Dimensions are Approximate, Actual May Vary.



Jaden Combs
303-324-1437
jaden@kentwood.com



Scan code
for more
property
details

