



8910 W Portland Avenue
Littleton, CO 80128
COMMUNITY: Stony Creek

MLS # 3341889
PRICE \$665,000



Single Family



2326 SQFT



3 Beds



2/1 Baths



2 Car



0.06 Acre



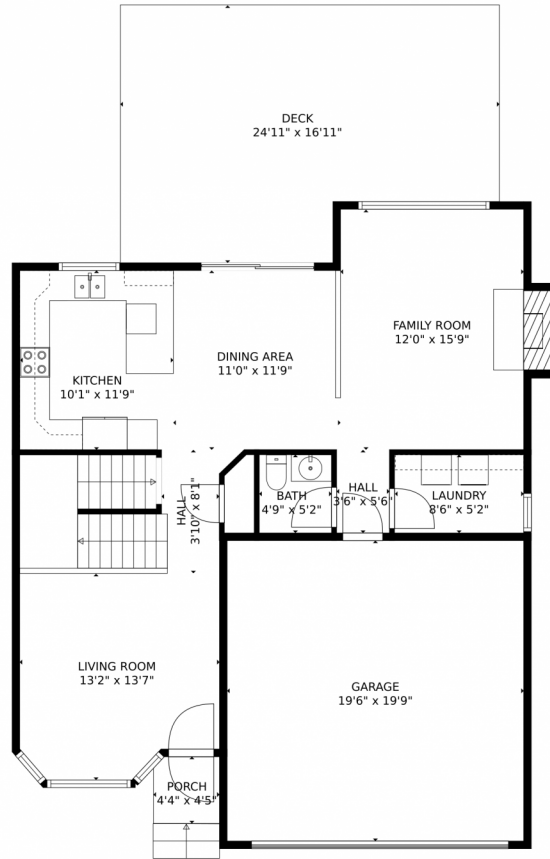
Julie Leins
720-474-0928
julieleins@kw.com
<https://coloradohomesdreamteam.com>



Scan code
for more
property
details



8910 W Portland Avenue, Littleton, CO 80128 – Main Level



TOTAL: 1931 sq. ft
Below Ground: 354 sq. ft, FLOOR 2: 825 sq. ft, FLOOR 3: 752 sq. ft
EXCLUDED AREAS: STORAGE: 151 sq. ft, ELECTRICAL ROOM: 36 sq. ft, GARAGE: 385 sq. ft,
DECK: 378 sq. ft, PORCH: 19 sq. ft, FIREPLACE: 7 sq. ft,
OPEN TO BELOW: 355 sq. ft

MEASUREMENTS CALCULATED BY V1Photos.com ARE DEEMED HIGHLY RELIABLE BUT NOT GUARANTEED.



Disclaimer: Sizes and Dimensions are Approximate, Actual May Vary.



Julie Leins

720-474-0928

julieleins@kw.com

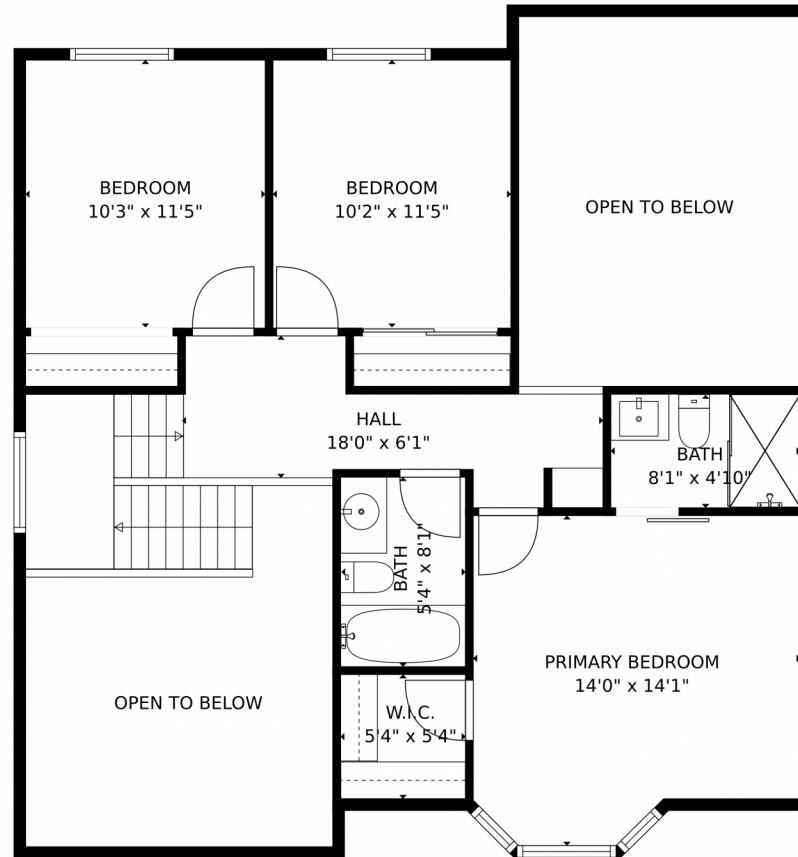
<https://coloradohomesdreamteam.com>



Scan code
for more
property
details



8910 W Portland Avenue, Littleton, CO 80128 – Upper Level



TOTAL: 1931 sq. ft
Below Ground: 354 sq. ft, FLOOR 2: 825 sq. ft, FLOOR 3: 752 sq. ft
EXCLUDED AREAS: STORAGE: 151 sq. ft, ELECTRICAL ROOM: 36 sq. ft, GARAGE: 385 sq. ft,
DECK: 378 sq. ft, PORCH: 19 sq. ft, FIREPLACE: 7 sq. ft,
OPEN TO BELOW: 355 sq. ft

MEASUREMENTS CALCULATED BY V1Photos.com ARE DEEMED HIGHLY RELIABLE BUT NOT GUARANTEED.



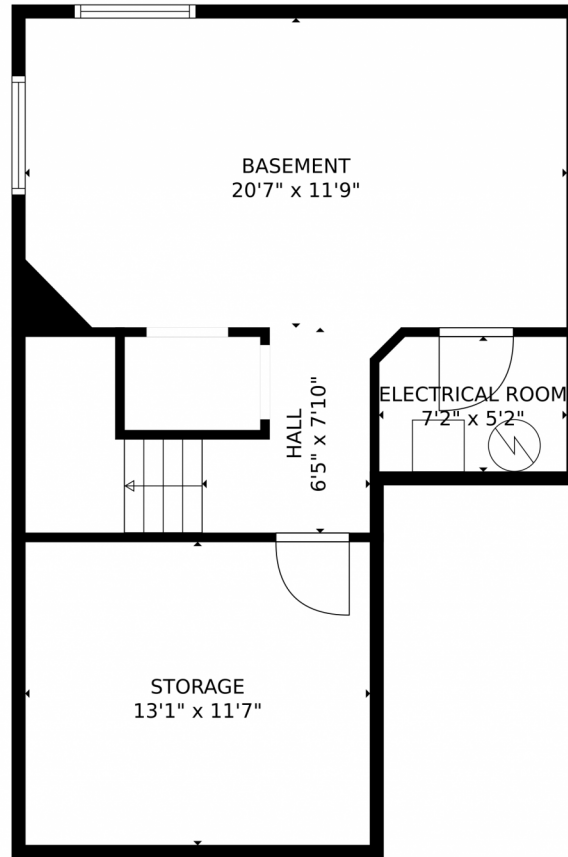
Disclaimer: Sizes and Dimensions are Approximate, Actual May Vary.



Julie Leins
720-474-0928
julieleins@kw.com
<https://coloradohomesdreamteam.com>



8910 W Portland Avenue, Littleton, CO 80128 – Lower Level



TOTAL: 1931 sq. ft
Below Ground: 354 sq. ft, FLOOR 2: 825 sq. ft, FLOOR 3: 752 sq. ft
EXCLUDED AREAS: STORAGE: 151 sq. ft, ELECTRICAL ROOM: 36 sq. ft, GARAGE: 385 sq. ft,
DECK: 378 sq. ft, PORCH: 19 sq. ft, FIREPLACE: 7 sq. ft,
OPEN TO BELOW: 355 sq. ft

MEASUREMENTS CALCULATED BY V1Photos.com ARE DEEMED HIGHLY RELIABLE BUT NOT GUARANTEED.

Disclaimer: Sizes and Dimensions are Approximate, Actual May Vary.



Julie Leins

720-474-0928

julieleins@kw.com

<https://coloradohomesdreamteam.com>



Scan code
for more
property
details



8910 W Portland Avenue, Littleton, CO 80128 – All Levels



TOTAL: 1931 sq. ft
Below Ground: 354 sq. ft, FLOOR 2: 825 sq. ft, FLOOR 3: 752 sq. ft
EXCLUDED AREAS: STORAGE: 151 sq. ft, ELECTRICAL ROOM: 36 sq. ft, GARAGE: 385 sq. ft,
DECK: 378 sq. ft, PORCH: 19 sq. ft, FIREPLACE: 7 sq. ft,
OPEN TO BELOW: 355 sq. ft

MEASUREMENTS CALCULATED BY V1Photos.COM ARE DEEMED HIGHLY RELIABLE BUT NOT GUARANTEED.



Disclaimer: Sizes and Dimensions are Approximate, Actual May Vary.



Julie Leins
720-474-0928
julieleins@kw.com
<https://coloradohomesdreamteam.com>



Scan code
for more
property
details

