



Single Family



1320 SQFT



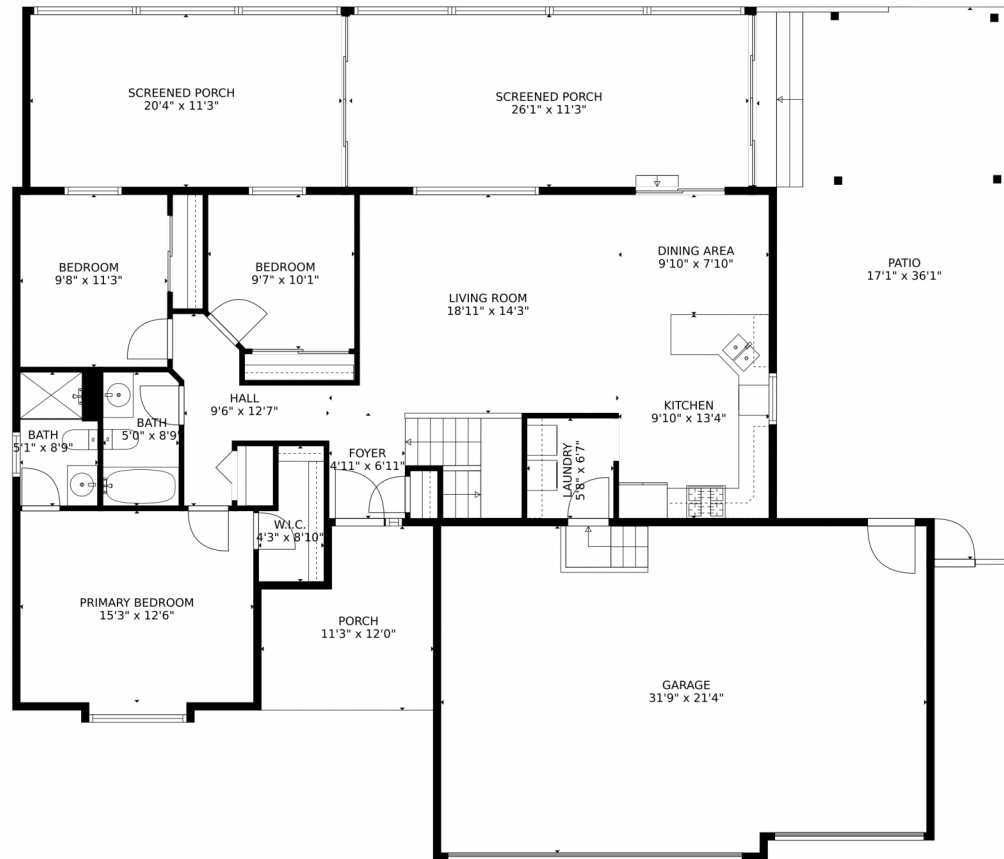
Elizabeth Dolton
970-396-7233
elizabethdolton@windermere.com



Scan code
for more
property
details



405 Norwood Court, Windsor, CO 80550 – Main Level



TOTAL: 2450 sq. ft
Below Ground: 1212 sq. ft, FLOOR 2: 1238 sq. ft
EXCLUDED AREAS: GARAGE: 664 sq. ft, SCREENED PORCH: 524 sq. ft, PORCH: 116 sq. ft,
PATIO: 555 sq. ft, EMBEDDED WINDOW: 6 sq. ft

MEASUREMENTS CALCULATED BY V1Photos.com ARE DEEMED HIGHLY RELIABLE BUT NOT GUARANTEED.



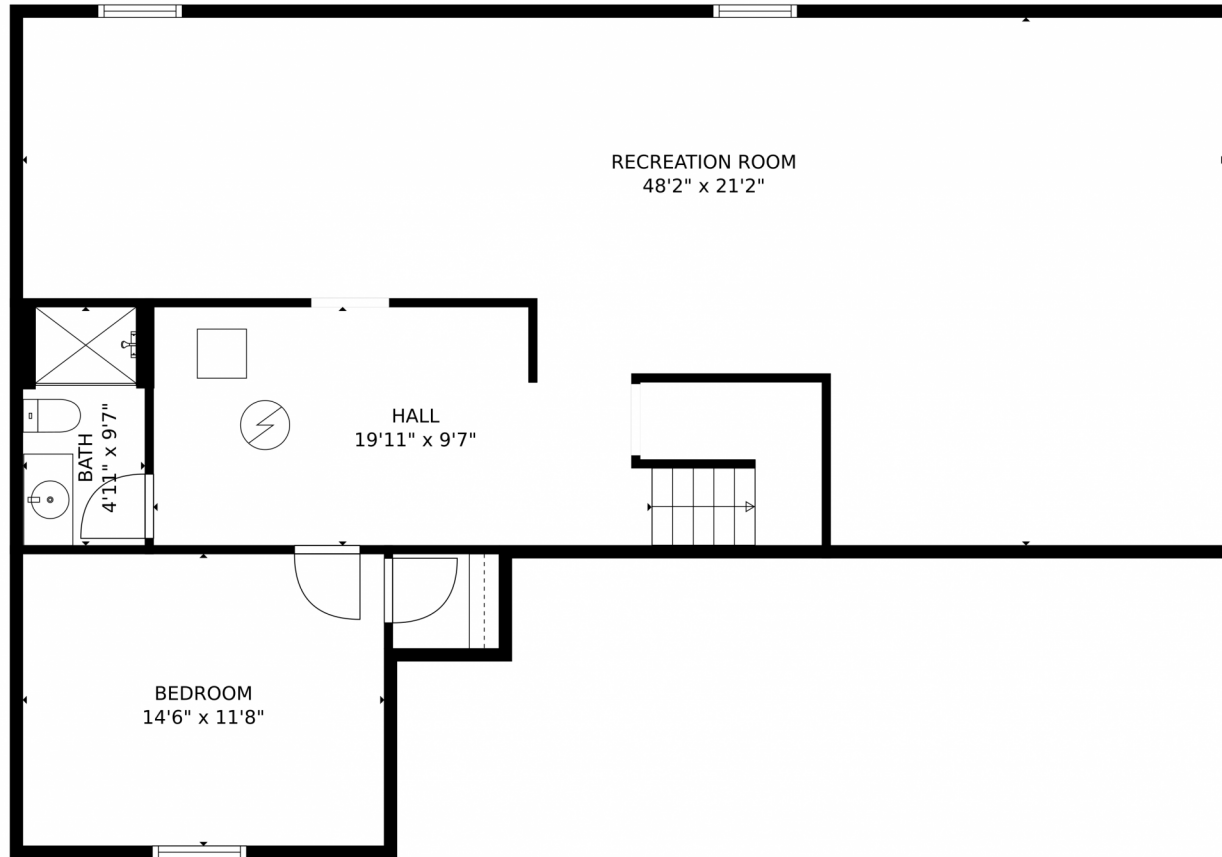
Disclaimer: Sizes and Dimensions are Approximate, Actual May Vary.



Elizabeth Dolton
970-396-7233
elizabethdolton@windermere.com



405 Norwood Court, Windsor, CO 80550 – Lower Level



TOTAL: 2450 sq. ft
Below Ground: 1212 sq. ft, FLOOR 2: 1238 sq. ft
EXCLUDED AREAS: GARAGE: 664 sq. ft, SCREENED PORCH: 524 sq. ft, PORCH: 116 sq. ft,
PATIO: 555 sq. ft, EMBEDDED WINDOW: 6 sq. ft
MEASUREMENTS CALCULATED BY V1Photos.com ARE DEEMED HIGHLY RELIABLE BUT NOT GUARANTEED.



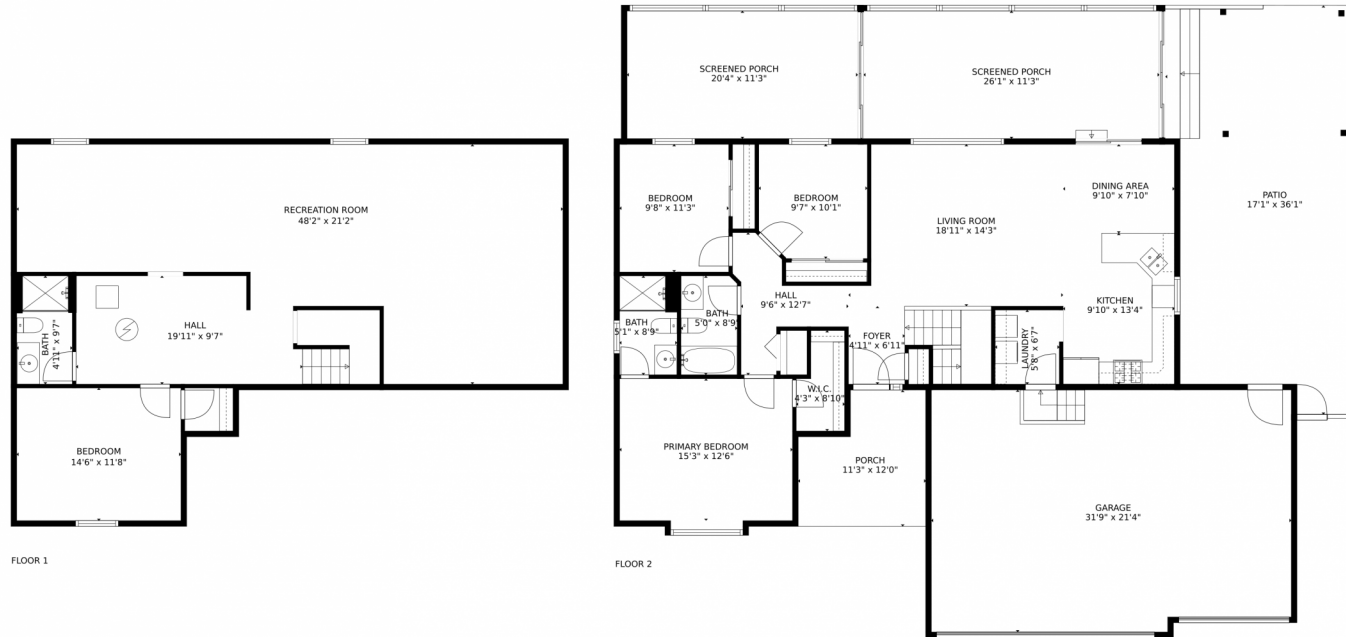
Disclaimer: Sizes and Dimensions are Approximate, Actual May Vary.



Elizabeth Dolton
970-396-7233
elizabethdolton@windermere.com



405 Norwood Court, Windsor, CO 80550 – All Levels



TOTAL: 2450 sq. ft
Below Ground: 1212 sq. ft, FLOOR 2: 1238 sq. ft
EXCLUDED AREAS: GARAGE: 664 sq. ft, SCREENED PORCH: 524 sq. ft, PORCH: 116 sq. ft,
PATIO: 555 sq. ft, EMBEDDED WINDOW: 6 sq. ft

MEASUREMENTS CALCULATED BY V1Photos.COM ARE DEEMED HIGHLY RELIABLE BUT NOT GUARANTEED.



Disclaimer: Sizes and Dimensions are Approximate, Actual May Vary.



Elizabeth Dolton
970-396-7233
elizabethdolton@windermere.com

