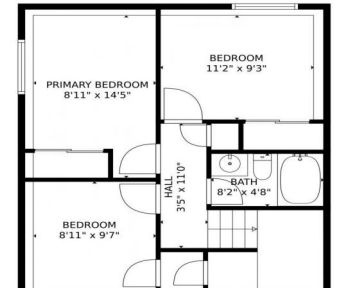




1043 Nolte Drive, Colorado Springs, CO 80916 - 1st\_floor\_1043\_nolte\_drive\_west\_colorado\_springs



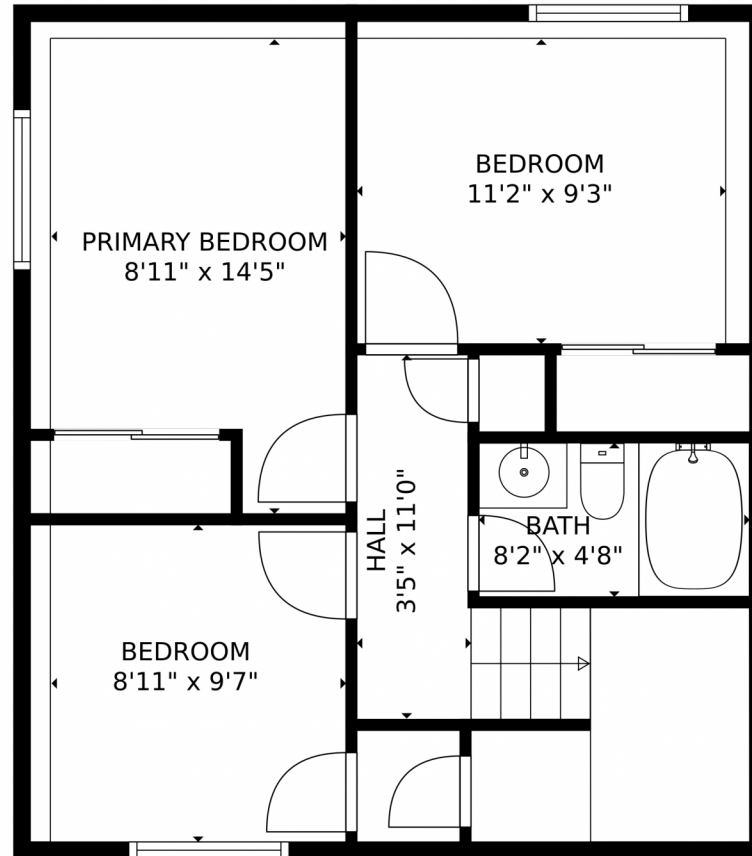
 Single Family  1166 SQFT



**Taylor Haas**  
 303-665-7368  
 taylorh@coloradorpm.com  
<https://www.coloradorpm.com/available-rental-properties-denver>



1043 Nolte Drive, Colorado Springs, CO 80916 – Lower Level



**TOTAL: 1141 sq. ft**

Below Ground: 542 sq. ft, FLOOR 2: 599 sq. ft

EXCLUDED AREAS: GARAGE: 299 sq. ft, PORCH: 49 sq. ft

MEASUREMENTS CALCULATED BY V1Photos.com ARE DEEMED HIGHLY RELIABLE BUT NOT GUARANTEED.



Disclaimer: Sizes and Dimensions are Approximate, Actual May Vary.



**Taylor Haas**

303-665-7368

taylorh@coloradorpm.com

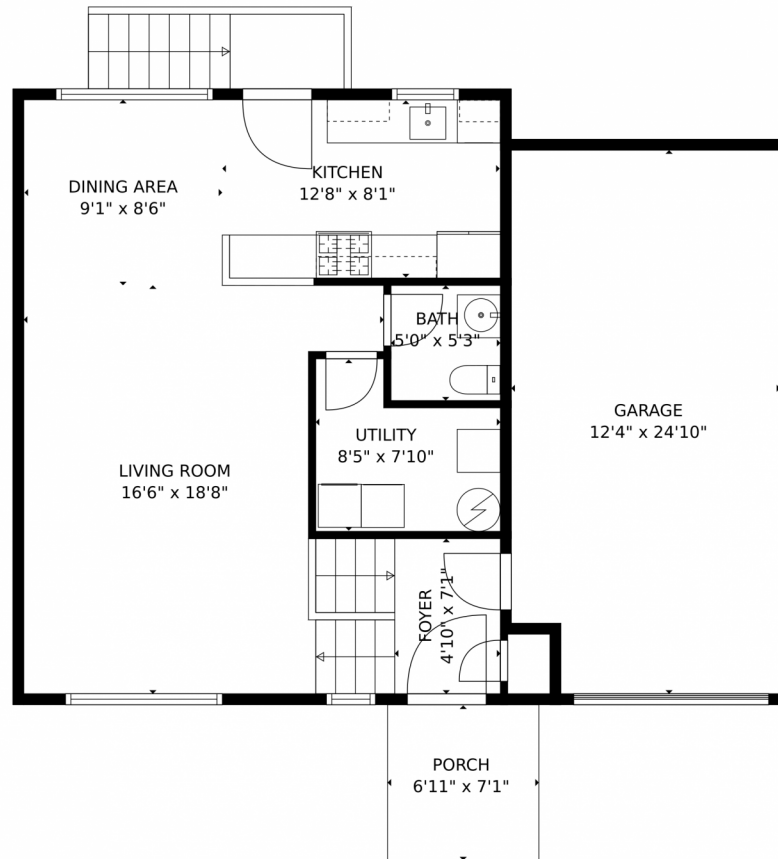
<https://www.coloradorpm.com/available-rental-properties-denver>



Scan code  
for more  
property  
details



# 1043 Nolte Drive, Colorado Springs, CO 80916 – Upper Level



**TOTAL: 1141 sq. ft**

Below Ground: 542 sq. ft, FLOOR 2: 599 sq. ft

EXCLUDED AREAS: GARAGE: 299 sq. ft, PORCH: 49 sq. ft

MEASUREMENTS CALCULATED BY V1Photos.com ARE DEEMED HIGHLY RELIABLE BUT NOT GUARANTEED.



Disclaimer: Sizes and Dimensions are Approximate, Actual May Vary.



**Taylor Haas**

303-665-7368

taylorh@coloradorpm.com

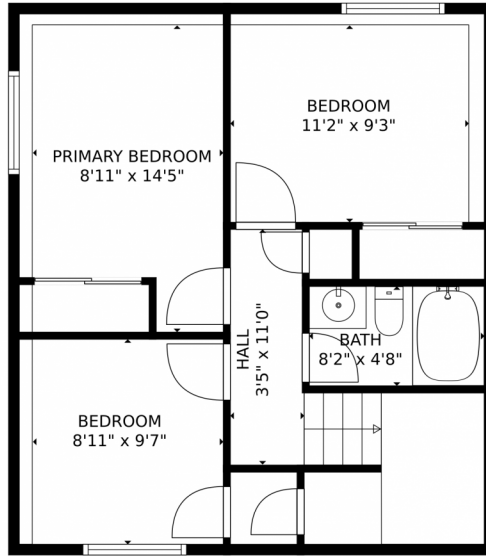
<https://www.coloradorpm.com/available-rental-properties-denver>



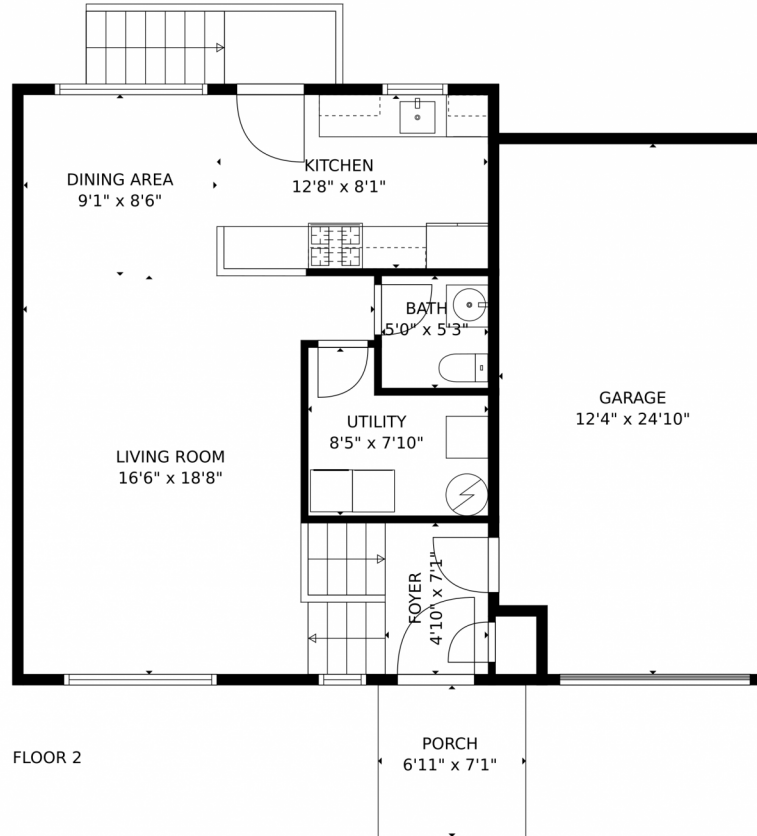
Scan code  
for more  
property  
details



# 1043 Nolte Drive, Colorado Springs, CO 80916 – All Levels



FLOOR 1



FLOOR 2

**TOTAL: 1141 sq. ft**

Below Ground: 542 sq. ft, FLOOR 2: 599 sq. ft

EXCLUDED AREAS: GARAGE: 299 sq. ft, PORCH: 49 sq. ft

MEASUREMENTS CALCULATED BY V1Photos.com ARE DEEMED HIGHLY RELIABLE BUT NOT GUARANTEED.



Disclaimer: Sizes and Dimensions are Approximate, Actual May Vary.



**Taylor Haas**

303-665-7368

taylorh@coloradorpm.com

<https://www.coloradorpm.com/available-rental-properties-denver>



Scan code  
for more  
property  
details

