



 Single Family
  3119 SQFT
  4 Beds
  3 Baths
  2 Car
  0.26 Acre

PROPERTY DETAILS

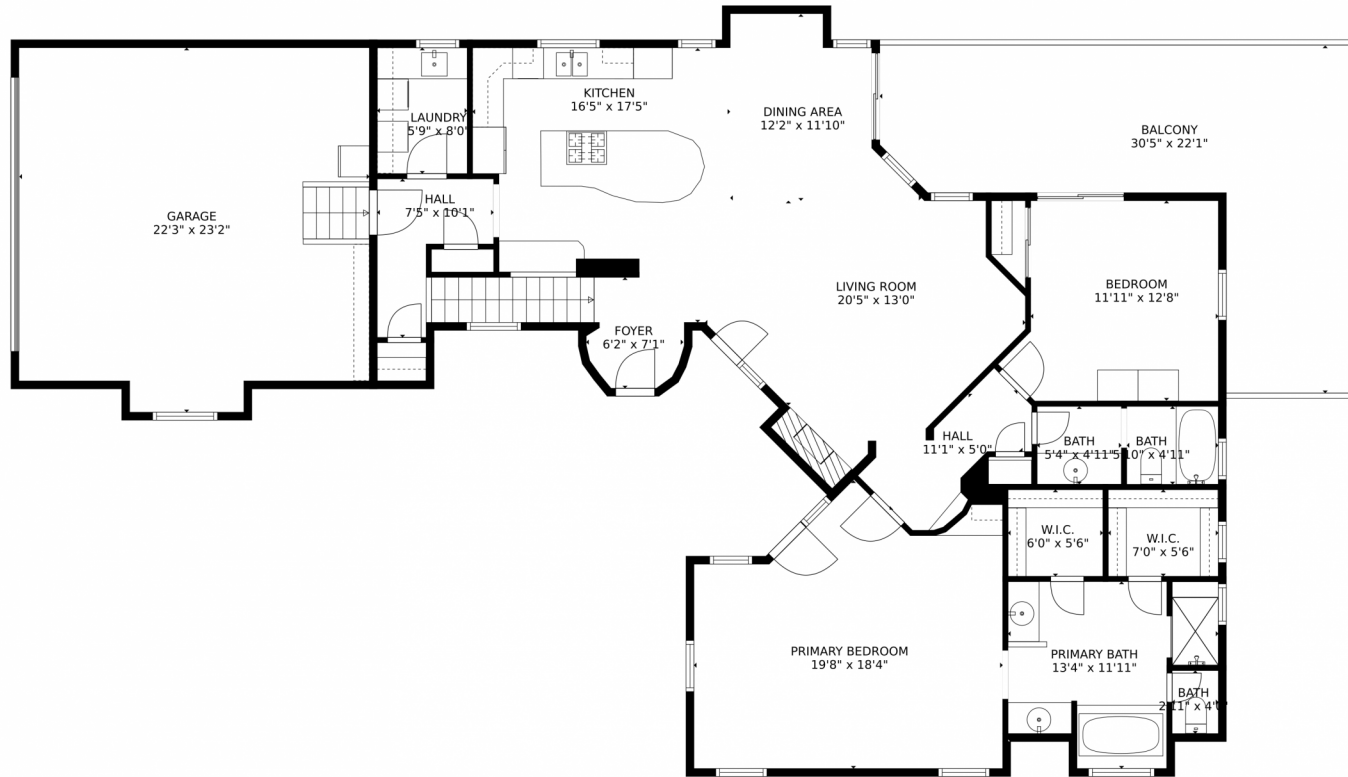
Welcome to a luxurious lifestyle in the enchanting Village of Castle Pines! This exquisite ranch-style home offers a serene way of life with stunning views. Wake up in your spacious primary suite and enjoy the natural light. Relax in your spa-like bathroom before sipping coffee on the deck with breathtaking mesa views. The gourmet kitchen is perfect for culinary adventures and family gatherings. The open-concept living room shares a two-sided fireplace with a spacious outdoor patio. The finished walk-out basement offers two bedrooms with stunning views and versatile space. Step outside to the beautifully landscaped yard and patio. The Village of Castle Pines offers world-class amenities including golf courses, swimming pools, clubs, fitness centers, and walking trails. This home is a gateway to an enriched lifestyle. Schedule your private tour today and step into the lifestyle you've always dreamed of in this remarkable home.



Sean Ready
 303-331-4190
 sean@readygroupkw.com



5082 Hidden Pond Place, Castle Rock, CO 80108 – main level



TOTAL: 2920 sq. ft
Below Ground: 1307 sq. ft, FLOOR 2: 1613 sq. ft
EXCLUDED AREAS: STORAGE: 216 sq. ft, GARAGE: 486 sq. ft, BALCONY: 387 sq. ft
MEASUREMENTS CALCULATED BY V1Photos.com ARE DEEMED HIGHLY RELIABLE BUT NOT GUARANTEED.



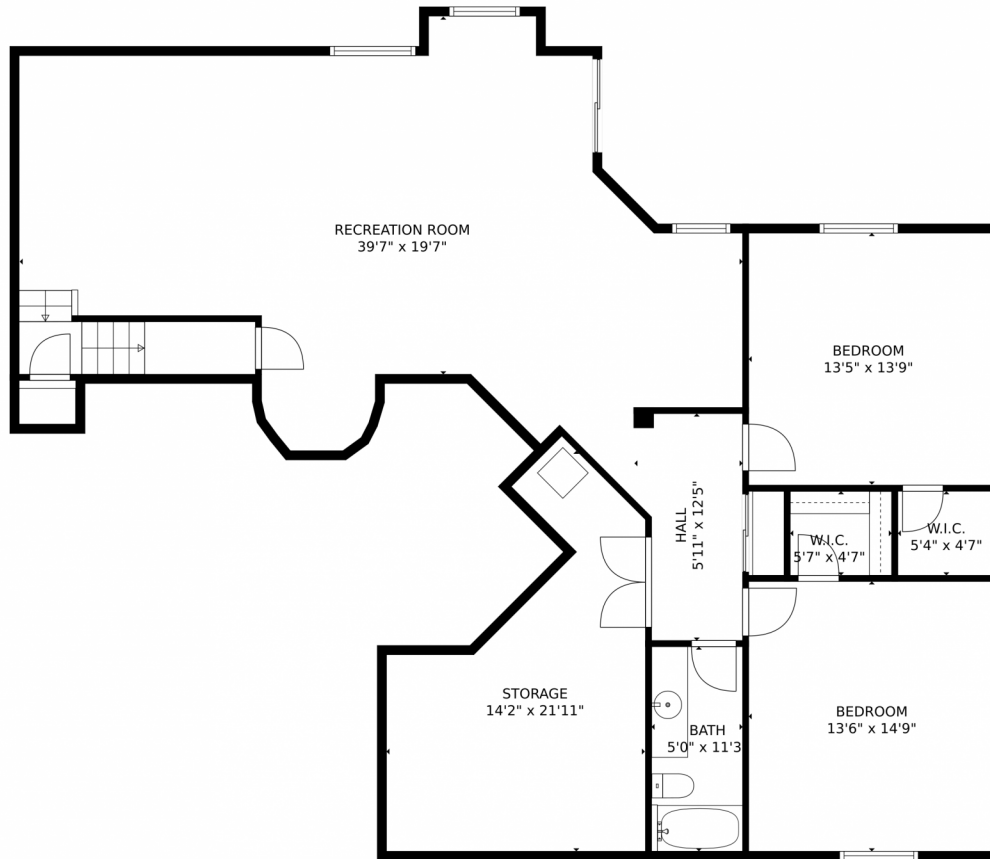
Disclaimer: Sizes and Dimensions are Approximate, Actual May Vary.



Sean Ready
303-331-4190
sean@readygroupkw.com



5082 Hidden Pond Place, Castle Rock, CO 80108 – lower level



TOTAL: 2920 sq. ft
Below Ground: 1307 sq. ft, FLOOR 2: 1613 sq. ft
EXCLUDED AREAS: STORAGE: 216 sq. ft, GARAGE: 486 sq. ft, BALCONY: 387 sq. ft
MEASUREMENTS CALCULATED BY V1Photos.com ARE DEEMED HIGHLY RELIABLE BUT NOT GUARANTEED.



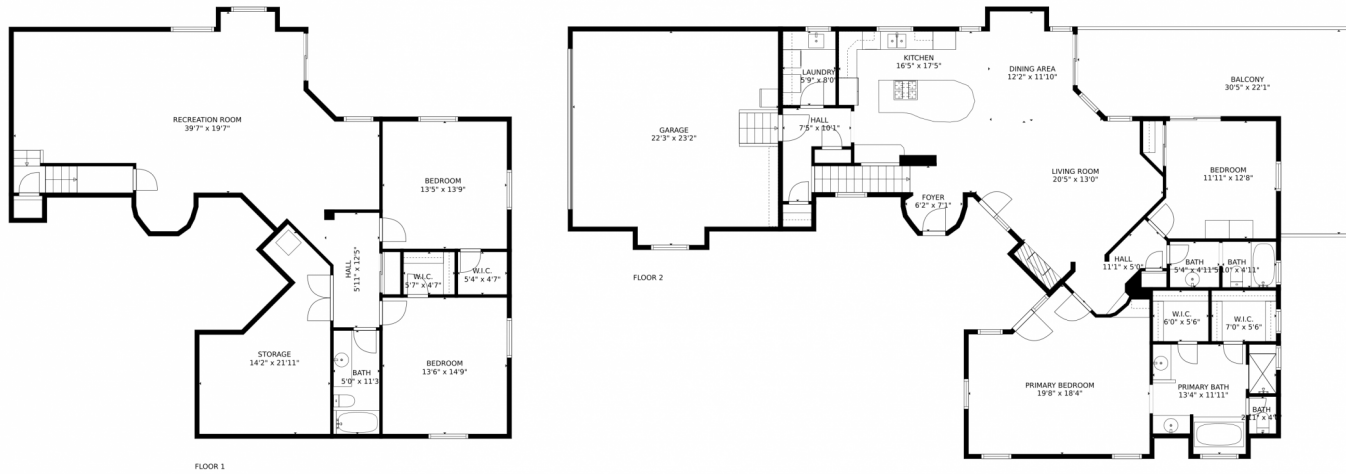
Disclaimer: Sizes and Dimensions are Approximate, Actual May Vary.



Sean Ready
303-331-4190
sean@readygroupkw.com



5082 Hidden Pond Place, Castle Rock, CO 80108 – all levels



TOTAL: 2920 sq. ft
Below Ground: 1307 sq. ft, FLOOR 2: 1613 sq. ft
EXCLUDED AREAS: STORAGE: 216 sq. ft, GARAGE: 486 sq. ft, BALCONY: 387 sq. ft
MEASUREMENTS CALCULATED BY V1Photos.com ARE DEEMED HIGHLY RELIABLE BUT NOT GUARANTEED.



Disclaimer: Sizes and Dimensions are Approximate, Actual May Vary.



Sean Ready
303-331-4190
sean@readygroupkw.com

