



21409 East Union Drive, Aurora, CO 80015 - Main Level



Single Family



3840 SQFT

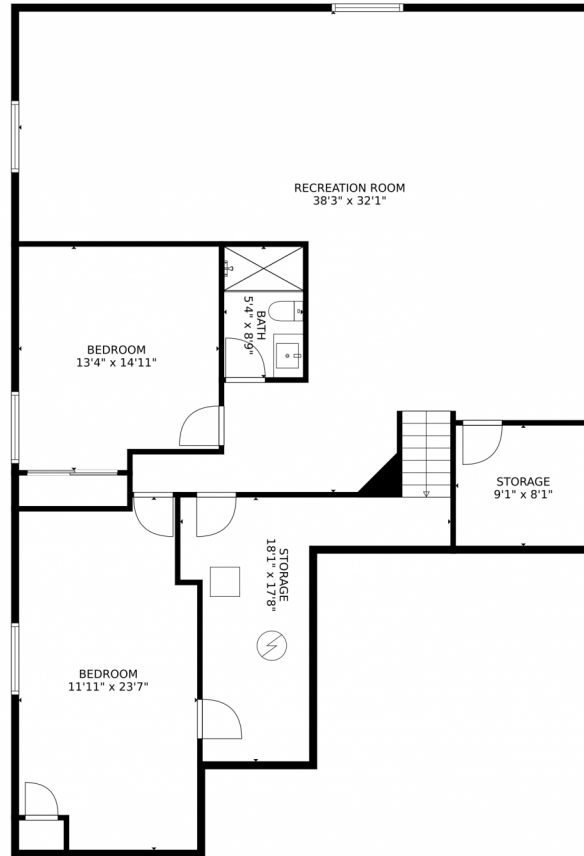


Courtney Claytor
720-556-8013
courtneyclaytorhome@gmail.com



Scan code
for more
property
details

21409 East Union Drive, Aurora, CO 80015 – Lower Level



TOTAL: 3244 sq. ft
Below Ground: 1455 sq. ft, FLOOR 2: 1789 sq. ft
EXCLUDED AREAS: STORAGE: 259 sq. ft, PORCH: 284 sq. ft, PATIO: 257 sq. ft,
GARAGE: 548 sq. ft, FIREPLACE: 9 sq. ft
MEASUREMENTS CALCULATED BY V1Photos.com ARE DEEMED HIGHLY RELIABLE BUT NOT GUARANTEED.



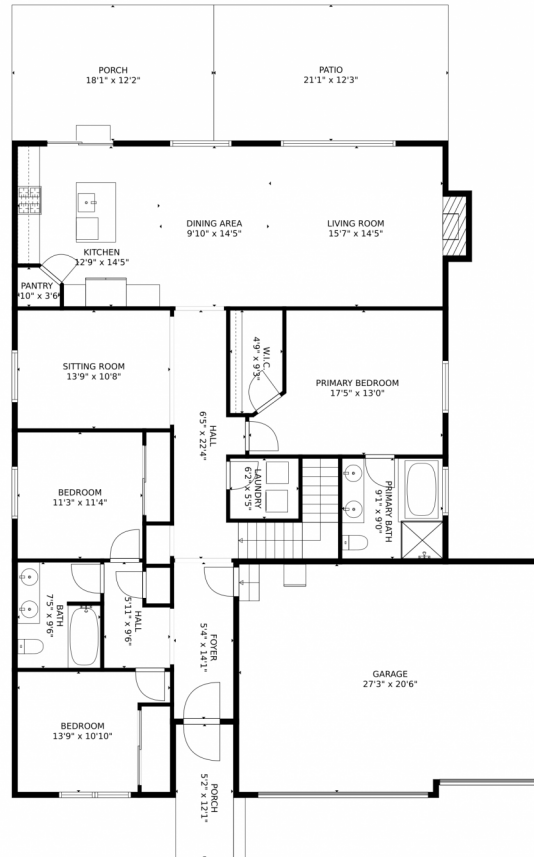
Disclaimer: Sizes and Dimensions are Approximate, Actual May Vary.



Courtney Claytor
720-556-8013
courtneyclaytorhome@gmail.com



21409 East Union Drive, Aurora, CO 80015 – Main Level



TOTAL: 3244 sq. ft
Below Ground: 1455 sq. ft, FLOOR 2: 1789 sq. ft
EXCLUDED AREAS: STORAGE: 259 sq. ft, PORCH: 284 sq. ft, PATIO: 257 sq. ft,
GARAGE: 548 sq. ft, FIREPLACE: 9 sq. ft
MEASUREMENTS CALCULATED BY V1Photos.COM ARE DEEMED HIGHLY RELIABLE BUT NOT GUARANTEED.



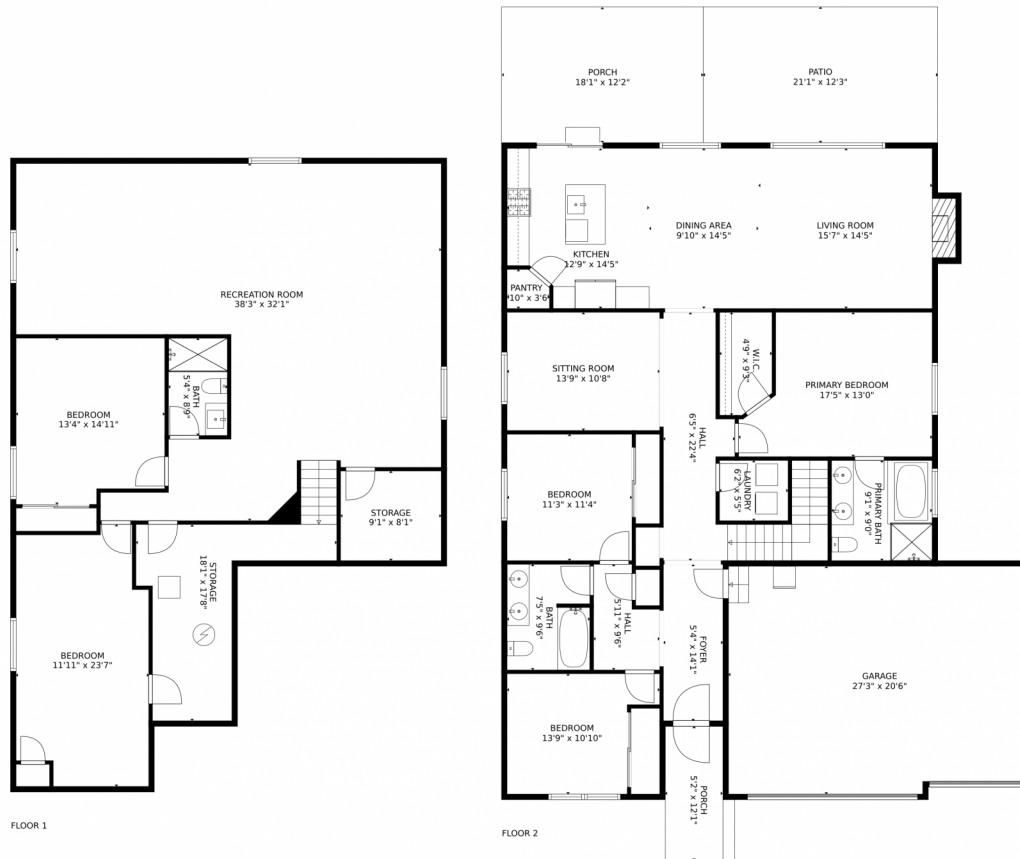
Disclaimer: Sizes and Dimensions are Approximate, Actual May Vary.



Courtney Claytor
720-556-8013
courtneyclaytorhome@gmail.com



21409 East Union Drive, Aurora, CO 80015 – All Levels



TOTAL: 3244 sq. ft
Below Ground: 1455 sq. ft, FLOOR 2: 1789 sq. ft
EXCLUDED AREAS: STORAGE: 259 sq. ft, PORCH: 284 sq. ft, PATIO: 257 sq. ft,
GARAGE: 548 sq. ft, FIREPLACE: 9 sq. ft

MEASUREMENTS CALCULATED BY V1Photos.com ARE DEEMED HIGHLY RELIABLE BUT NOT GUARANTEED.



Disclaimer: Sizes and Dimensions are Approximate, Actual May Vary.



Courtney Claytor
720-556-8013
courtneyclaytorhome@gmail.com

