



Single Family



2785 SQFT



3 Beds



2/1 Baths



4 Car



2 Acre

PROPERTY DETAILS

Charming Mountain Home in the Heart of Evergreen



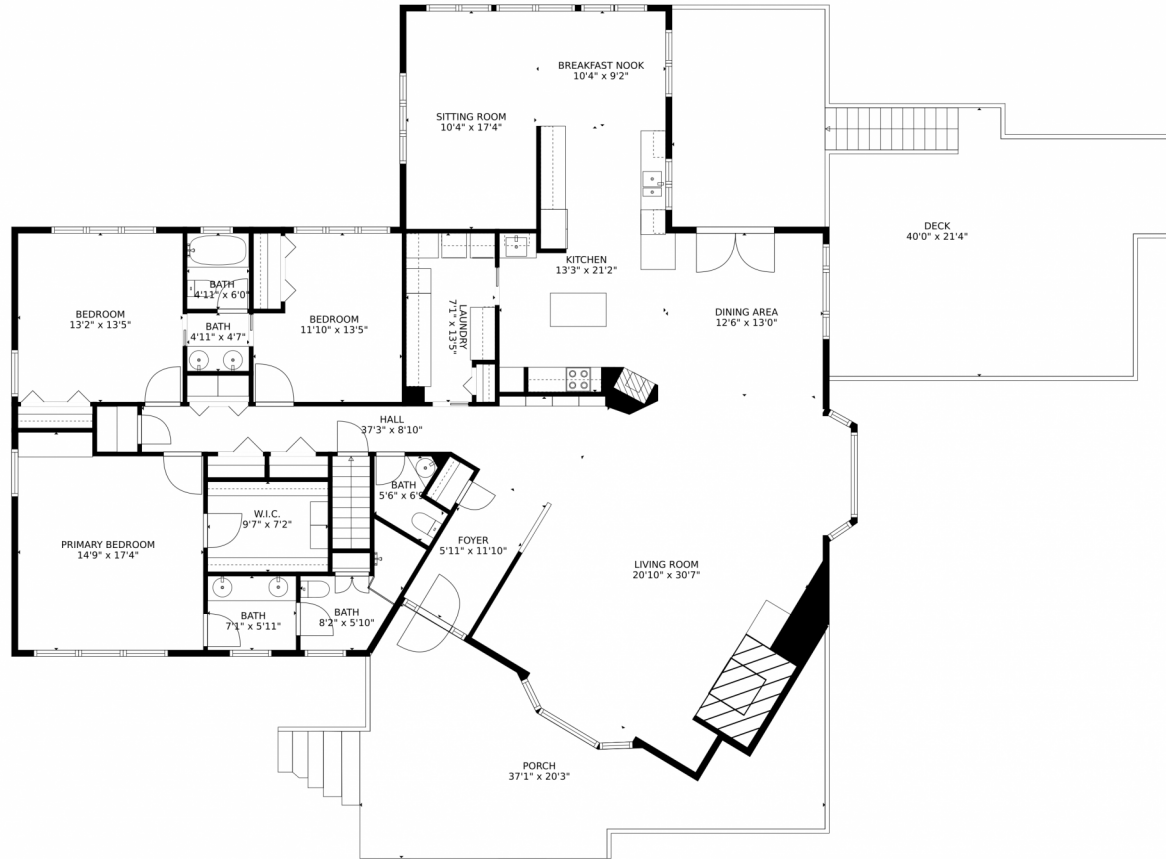
Peg Schroeder
303-885-4404
peg@tuppersteam.com



Scan code
for more
property
details



31329 Quarter Horse Road, Evergreen, CO 80439 – Main Level



TOTAL: 2929 sq. ft
Below Ground: 310 sq. ft, FLOOR 2: 2619 sq. ft
EXCLUDED AREAS: GARAGE: 1138 sq. ft, ELECTRICAL ROOM: 57 sq. ft, DECK: 731 sq. ft,
PORCH: 421 sq. ft, EMBEDDED WINDOW: 17 sq. ft

MEASUREMENTS CALCULATED BY V1Photos.com ARE DEEMED HIGHLY RELIABLE BUT NOT GUARANTEED.



Disclaimer: Sizes and Dimensions are Approximate, Actual May Vary.



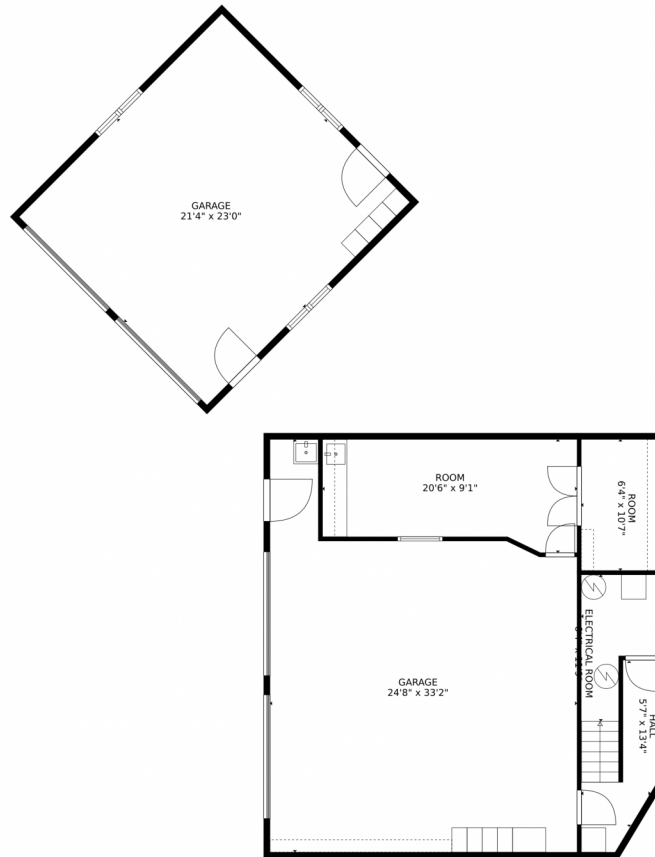
Peg Schroeder
303-885-4404
peg@tuppersteam.com



Scan code
for more
property
details



31329 Quarter Horse Road, Evergreen, CO 80439 – Lower Level



TOTAL: 2929 sq. ft
Below Ground: 310 sq. ft, FLOOR 2: 2619 sq. ft
EXCLUDED AREAS: GARAGE: 1138 sq. ft, ELECTRICAL ROOM: 57 sq. ft, DECK: 731 sq. ft,
PORCH: 421 sq. ft, EMBEDDED WINDOW: 17 sq. ft

MEASUREMENTS CALCULATED BY V1Photos.com ARE DEEMED HIGHLY RELIABLE BUT NOT GUARANTEED.



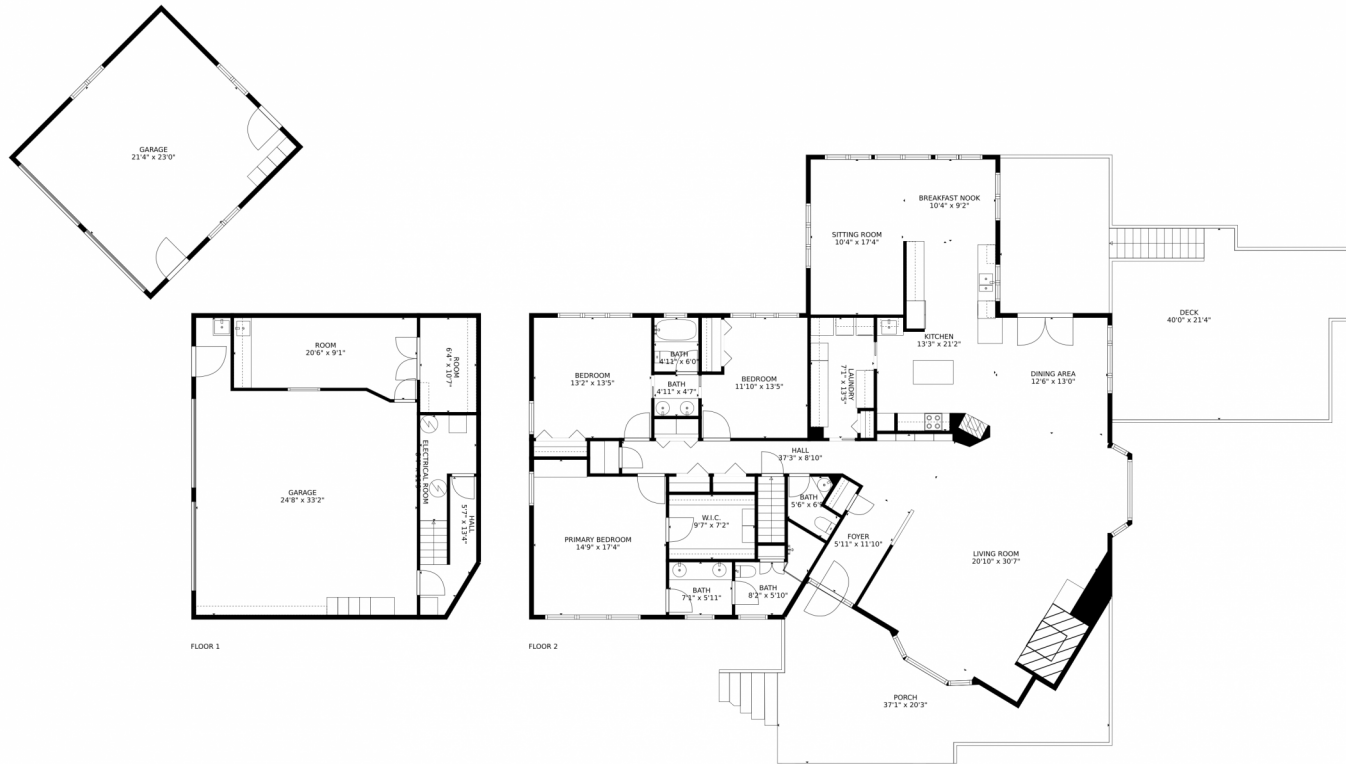
Disclaimer: Sizes and Dimensions are Approximate, Actual May Vary.



Peg Schroeder
303-885-4404
peg@tuppersteam.com



31329 Quarter Horse Road, Evergreen, CO 80439 – All Levels



TOTAL: 2929 sq. ft
Below Ground: 310 sq. ft, FLOOR 2: 2619 sq. ft
EXCLUDED AREAS: GARAGE: 1138 sq. ft, ELECTRICAL ROOM: 57 sq. ft, DECK: 731 sq. ft,
PORCH: 421 sq. ft, EMBEDDED WINDOW: 17 sq. ft

MEASUREMENTS CALCULATED BY V1Photos.COM ARE DEEMED HIGHLY RELIABLE BUT NOT GUARANTEED.

Disclaimer: Sizes and Dimensions are Approximate, Actual May Vary.



Peg Schroeder
303-885-4404
peg@tuppersteam.com



Scan code
for more
property
details

