



1355 Locust Street  
 Denver, CO 80220  
 COMMUNITY: Hale/Mayfair



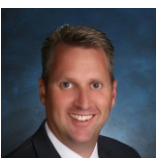
 Single Family

 2000 SQFT

 3 Beds

 2 Baths

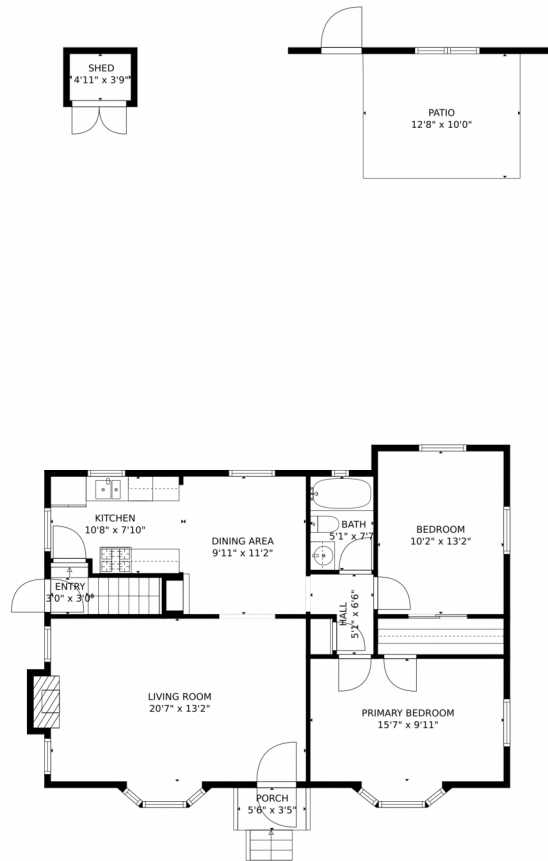
 2 Car



**Greg Dach**  
 303-525-9006  
 gregdach@remax.net



# 1355 Locust Street, Denver, CO 80220 – Main Level



**TOTAL: 1761 sq. ft**  
Below Ground: 838 sq. ft, FLOOR 2: 923 sq. ft  
EXCLUDED AREAS: ELECTRICAL ROOM: 38 sq. ft, PORCH: 19 sq. ft, PATIO: 127 sq. ft,  
SHED: 19 sq. ft, EMBEDDED WINDOW: 19 sq. ft, FIREPLACE: 4 sq. ft  
MEASUREMENTS CALCULATED BY V1Photos.com ARE DEEMED HIGHLY RELIABLE BUT NOT GUARANTEED.

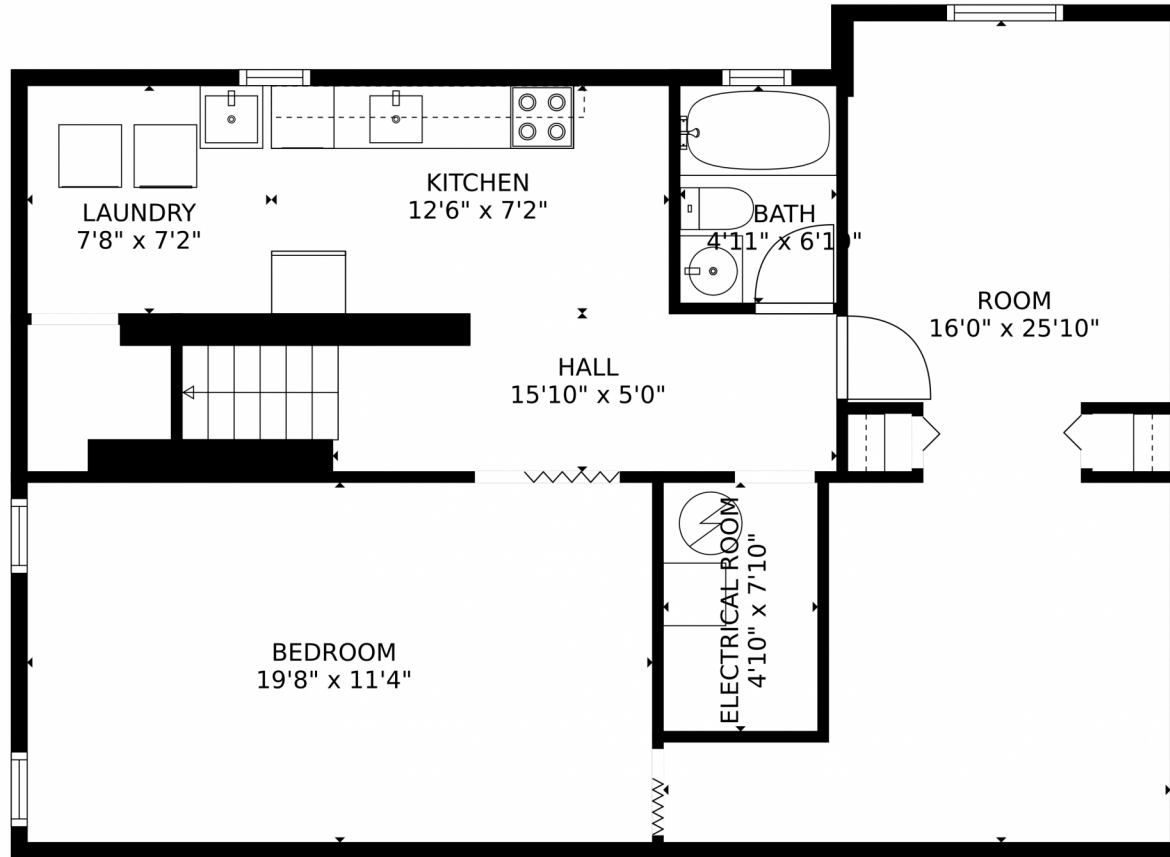


Disclaimer: Sizes and Dimensions are Approximate, Actual May Vary.



**Greg Dach**  
303-525-9006  
gregdach@remax.net





**TOTAL: 1761 sq. ft**  
Below Ground: 838 sq. ft, FLOOR 2: 923 sq. ft  
EXCLUDED AREAS: ELECTRICAL ROOM: 38 sq. ft, PORCH: 19 sq. ft, PATIO: 127 sq. ft,  
SHED: 19 sq. ft, EMBEDDED WINDOW: 19 sq. ft, FIREPLACE: 4 sq. ft  
MEASUREMENTS CALCULATED BY V1Photos.com ARE DEEMED HIGHLY RELIABLE BUT NOT GUARANTEED.



Disclaimer: Sizes and Dimensions are Approximate, Actual May Vary.



**Greg Dach**  
303-525-9006  
gregdach@remax.net



# 1355 Locust Street, Denver, CO 80220 – All Levels



**TOTAL: 1761 sq. ft**  
Below Ground: 838 sq. ft, FLOOR 2: 923 sq. ft  
EXCLUDED AREAS: ELECTRICAL ROOM: 38 sq. ft, PORCH: 19 sq. ft, PATIO: 127 sq. ft,  
SHED: 19 sq. ft, EMBEDDED WINDOW: 19 sq. ft, FIREPLACE: 4 sq. ft

MEASUREMENTS CALCULATED BY V1Photos.com ARE DEEMED HIGHLY RELIABLE BUT NOT GUARANTEED.



Disclaimer: Sizes and Dimensions are Approximate, Actual May Vary.



**Greg Dach**  
303-525-9006  
gregdach@remax.net

