



18206 East 53rd Drive
 Denver, CO 80249
 COMMUNITY: First Creek Village



Single Family



1805 SQFT



3 Beds



2/1 Baths



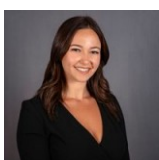
3 Car



0.21 Acre

PROPERTY DETAILS

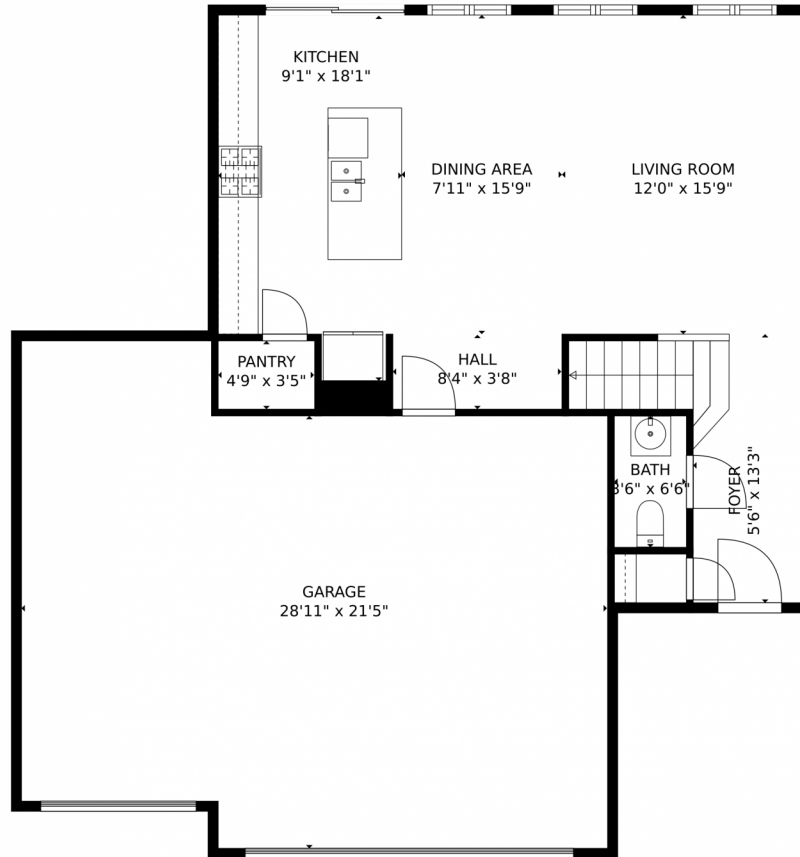
Welcome to your dream home in First Creek Village, Denver, CO! This 1,805 sq ft 3 bed, 2.5 bath single family home is impressive. Step inside to porcelain, wood-style flooring and a spacious open floor plan. The kitchen is a chef's dream with granite countertops, oversized island, and stainless steel appliances. The backyard oasis is fully fenced with a concrete patio and custom built pergola. Upstairs, the primary bedroom has a walk-in closet and spa-like bathroom. Two more bedrooms, a bathroom, and laundry room complete the second floor. Conveniently located near Denver International Airport, shopping centers, and more. Don't miss out on this incredible opportunity!



Rashell Evans
 201-478-2420
 rashell@exitrealtydtc.com



18206 East 53rd Drive, Denver, CO 80249 – Main Level

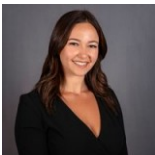


TOTAL: 1662 sq. ft
FLOOR 1: 655 sq. ft, FLOOR 2: 1007 sq. ft
EXCLUDED AREAS: GARAGE: 632 sq. ft, STORAGE: 32 sq. ft

MEASUREMENTS CALCULATED BY V1Photos.com ARE DEEMED HIGHLY RELIABLE BUT NOT GUARANTEED.



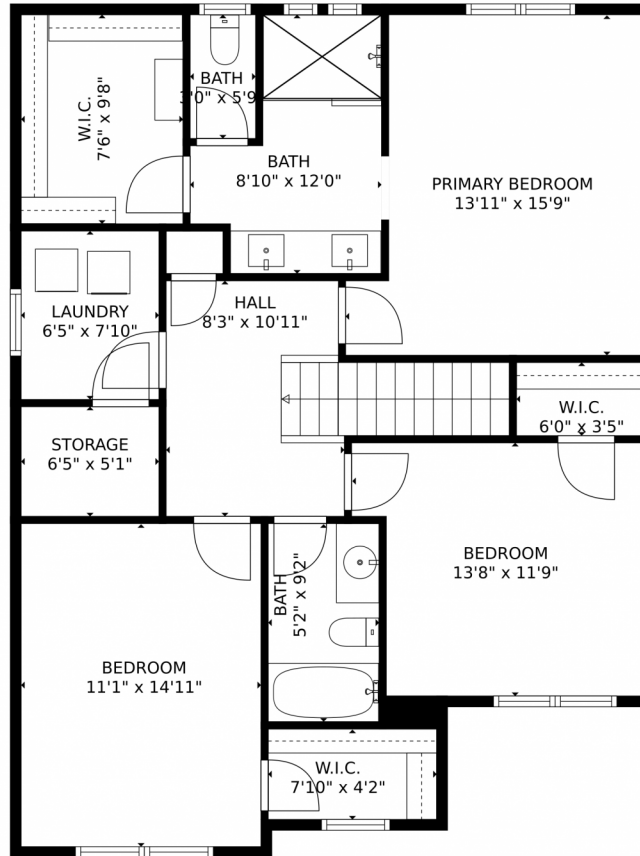
Disclaimer: Sizes and Dimensions are Approximate, Actual May Vary.



Rashell Evans
201-478-2420
rashell@exitrealtydtc.com



18206 East 53rd Drive, Denver, CO 80249 – 2nd Level

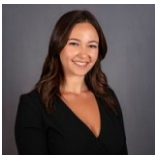


TOTAL: 1662 sq. ft
FLOOR 1: 655 sq. ft, FLOOR 2: 1007 sq. ft
EXCLUDED AREAS: GARAGE: 632 sq. ft, STORAGE: 32 sq. ft

MEASUREMENTS CALCULATED BY V1Photos.com ARE DEEMED HIGHLY RELIABLE BUT NOT GUARANTEED.



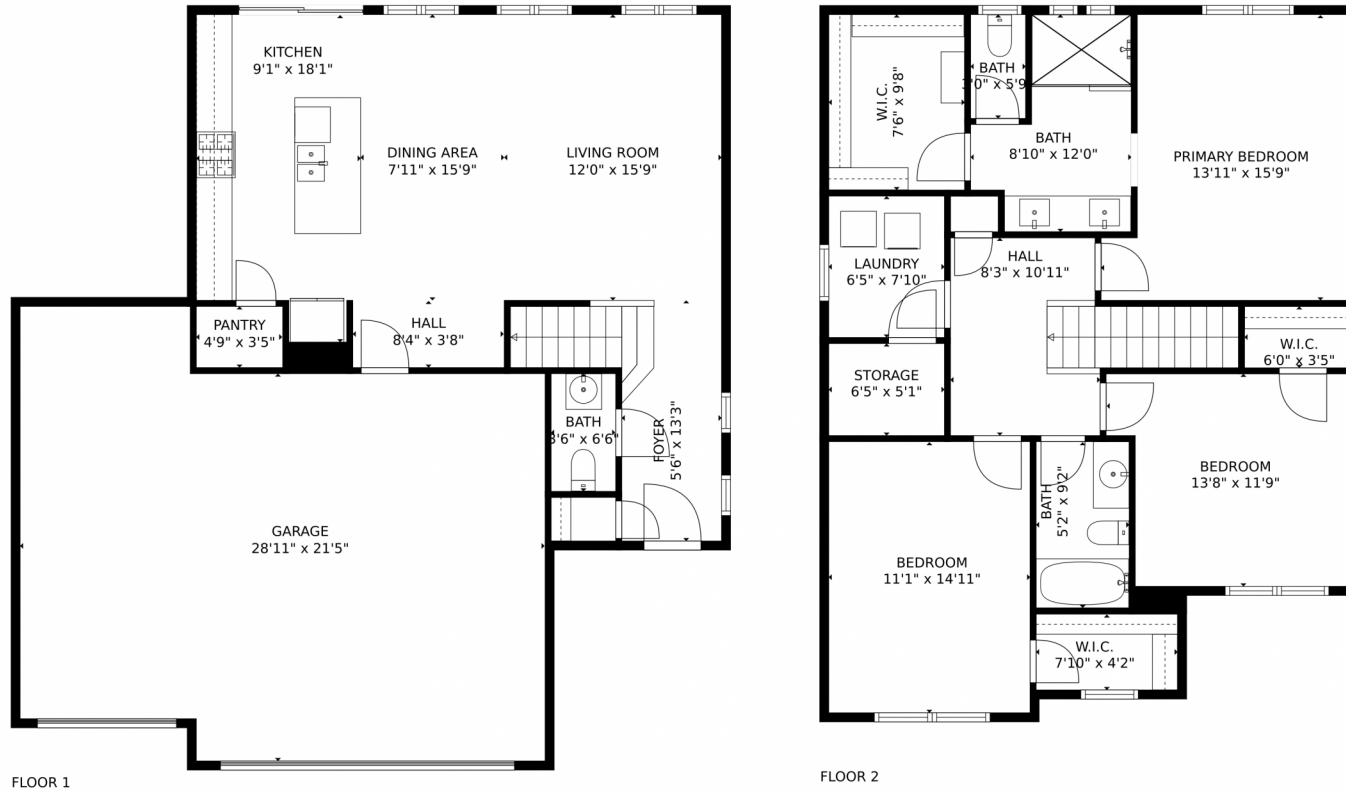
Disclaimer: Sizes and Dimensions are Approximate, Actual May Vary.



Rashell Evans
201-478-2420
rashell@exitrealtydtc.com



18206 East 53rd Drive, Denver, CO 80249 – All Levels

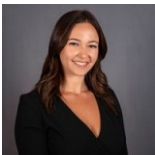


TOTAL: 1662 sq. ft
FLOOR 1: 655 sq. ft, FLOOR 2: 1007 sq. ft
EXCLUDED AREAS: GARAGE: 632 sq. ft, STORAGE: 32 sq. ft

MEASUREMENTS CALCULATED BY V1Photos.com ARE DEEMED HIGHLY RELIABLE BUT NOT GUARANTEED.



Disclaimer: Sizes and Dimensions are Approximate, Actual May Vary.



Rashell Evans
201-478-2420
rashell@exitrealtydttc.com



Scan code
for more
property
details

