

Single Family



2338 SQFT



4 Beds



2 Baths



2 Car



0.64 Acre

PROPERTY DETAILS

Seasonal Stream and a Peek of Pikes Peak



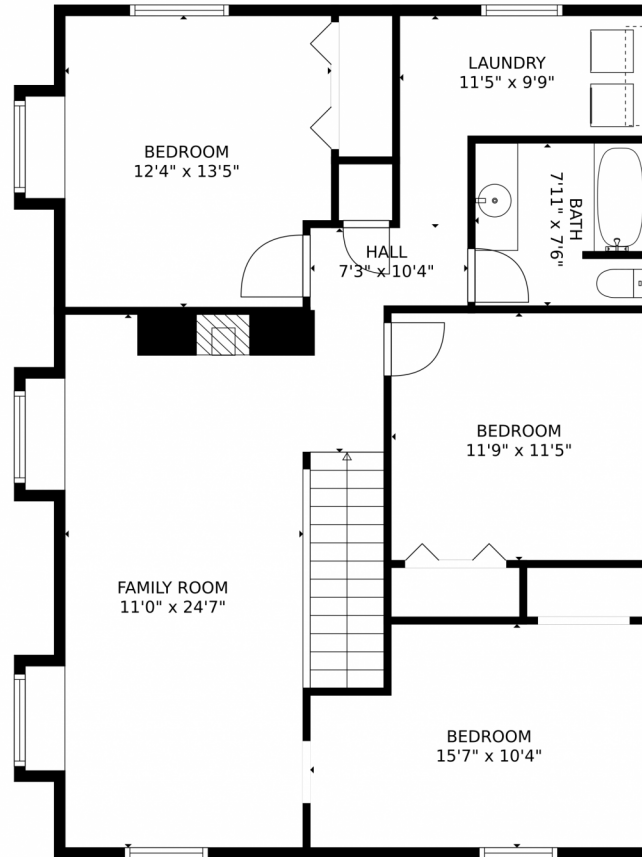
Matt Bachus
720-644-9363
matt@tuppersteam.com



Scan code
for more
property
details



30993 Kings Valley Drive, Conifer, CO 80433 – Second Level



TOTAL: 2091 sq. ft
Below Ground: 0 sq. ft, FLOOR 2: 1032 sq. ft, FLOOR 3: 1059 sq. ft
EXCLUDED AREAS: GARAGE: 346 sq. ft, DECK: 120 sq. ft, PORCH: 366 sq. ft
MEASUREMENTS CALCULATED BY V1Photos.com ARE DEEMED HIGHLY RELIABLE BUT NOT GUARANTEED.



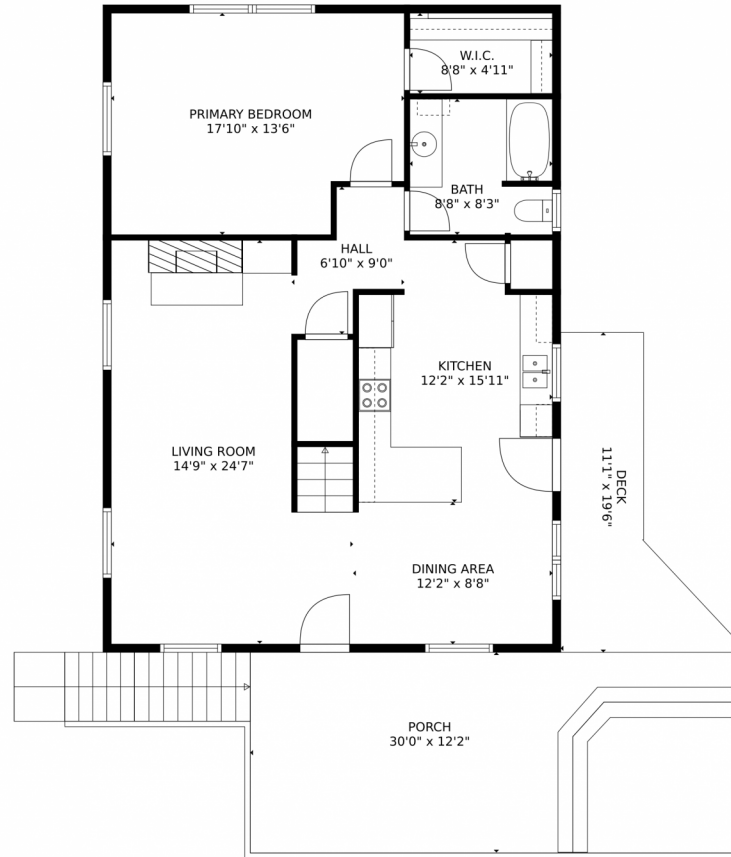
Disclaimer: Sizes and Dimensions are Approximate, Actual May Vary.



Matt Bachus
720-644-9363
matt@tuppersteam.com



30993 Kings Valley Drive, Conifer, CO 80433 – Main Level



TOTAL: 2091 sq. ft
Below Ground: 0 sq. ft, FLOOR 2: 1032 sq. ft, FLOOR 3: 1059 sq. ft
EXCLUDED AREAS: GARAGE: 346 sq. ft, DECK: 120 sq. ft, PORCH: 366 sq. ft
MEASUREMENTS CALCULATED BY V1Photos.com ARE DEEMED HIGHLY RELIABLE BUT NOT GUARANTEED.

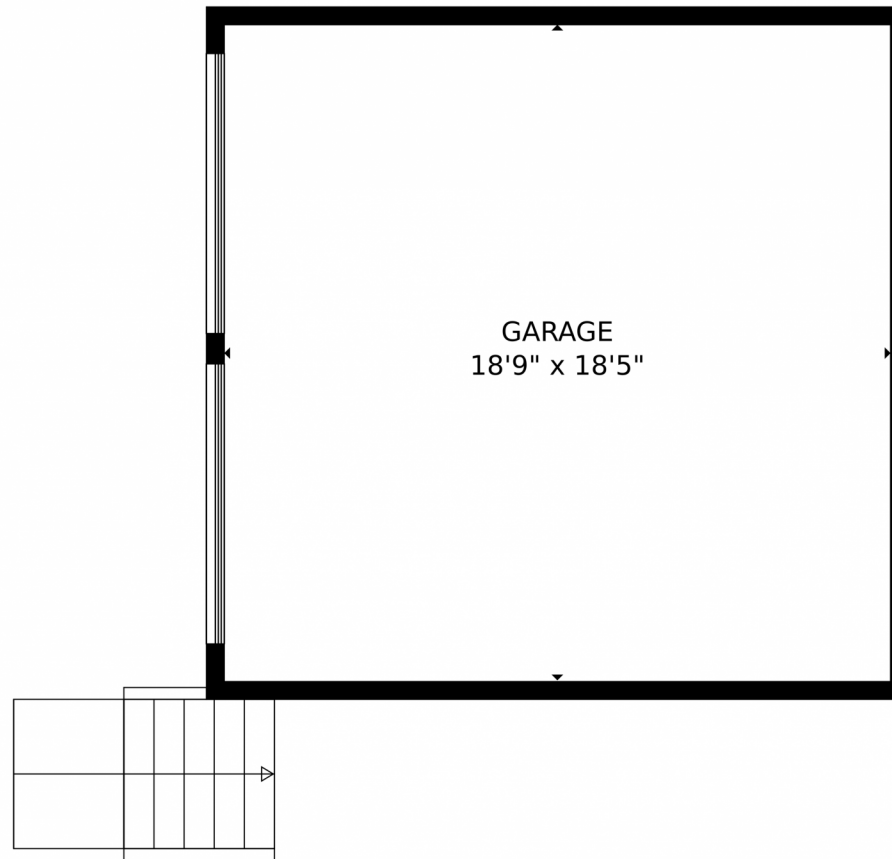


Disclaimer: Sizes and Dimensions are Approximate, Actual May Vary.



Matt Bachus
720-644-9363
matt@tuppersteam.com





TOTAL: 2091 sq. ft
Below Ground: 0 sq. ft, FLOOR 2: 1032 sq. ft, FLOOR 3: 1059 sq. ft
EXCLUDED AREAS: GARAGE: 346 sq. ft, DECK: 120 sq. ft, PORCH: 366 sq. ft
MEASUREMENTS CALCULATED BY V1Photos.com ARE DEEMED HIGHLY RELIABLE BUT NOT GUARANTEED.



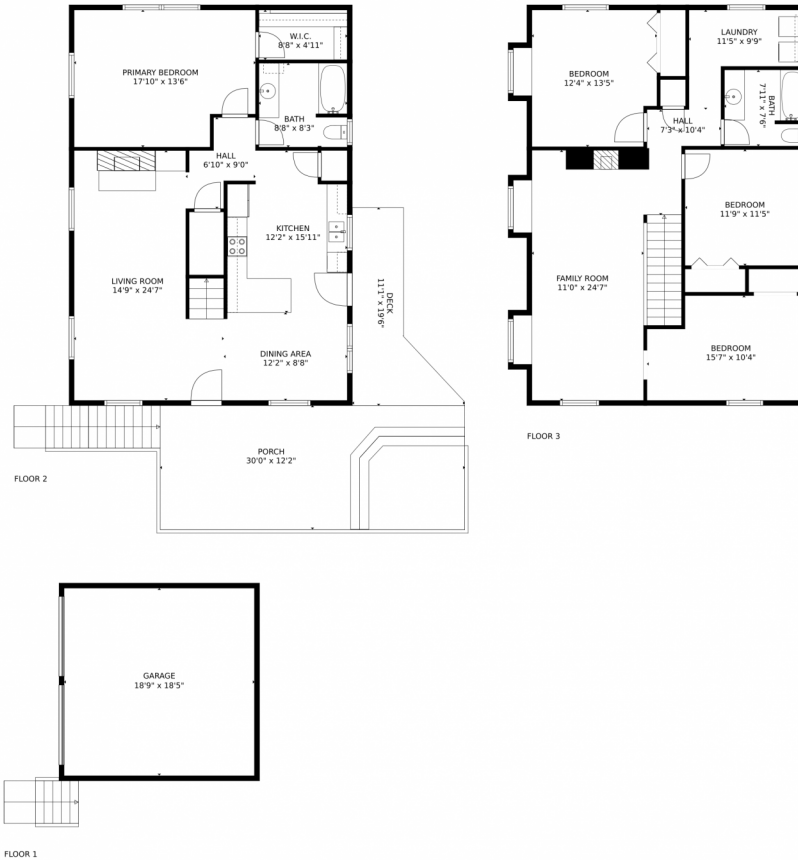
Disclaimer: Sizes and Dimensions are Approximate, Actual May Vary.



Matt Bachus
720-644-9363
matt@tuppersteam.com



30993 Kings Valley Drive, Conifer, CO 80433 – All Levels



TOTAL: 2091 sq. ft
Below Ground: 0 sq. ft, FLOOR 2: 1032 sq. ft, FLOOR 3: 1059 sq. ft
EXCLUDED AREAS: GARAGE: 346 sq. ft, DECK: 120 sq. ft, PORCH: 366 sq. ft
MEASUREMENTS CALCULATED BY V1Photos.com ARE DEEMED HIGHLY RELIABLE BUT NOT GUARANTEED.



Disclaimer: Sizes and Dimensions are Approximate, Actual May Vary.



Matt Bachus
720-644-9363
matt@tuppersteam.com

