



2921 W Long Drive, Unit C
 Littleton, CO 80120
 COMMUNITY: Southpark Townhomes



2921 W Long Drive, Unit C, Littleton, CO 80120 - 2921 West Long Drive-single-floor-dim.0



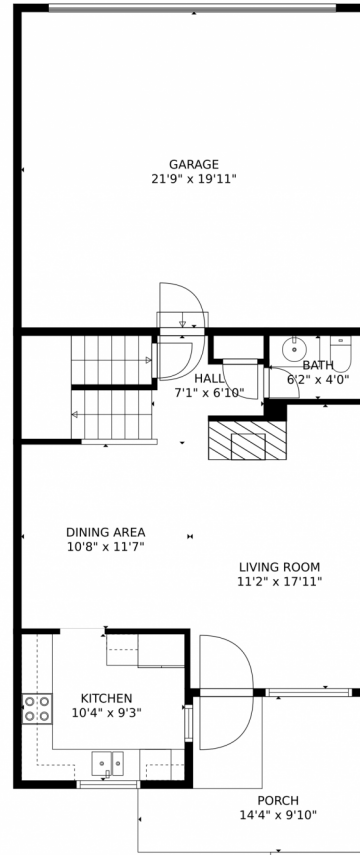
Townhouse 1317 SQFT 2 Beds 1/1 Baths 2 Car



Jerry Haberkorn
 303-919-5032
 jhaberkorn@remax.net



2921 W Long Drive, Unit C, Littleton, CO 80120 – Main Level



TOTAL: 1848 sq. ft
Below Ground: 534 sq. ft, FLOOR 2: 544 sq. ft, FLOOR 3: 770 sq. ft
EXCLUDED AREAS: GARAGE: 433 sq. ft, PORCH: 121 sq. ft, OPEN TO BELOW: 166 sq. ft
MEASUREMENTS CALCULATED BY V1Photos.com ARE DEEMED HIGHLY RELIABLE BUT NOT GUARANTEED.



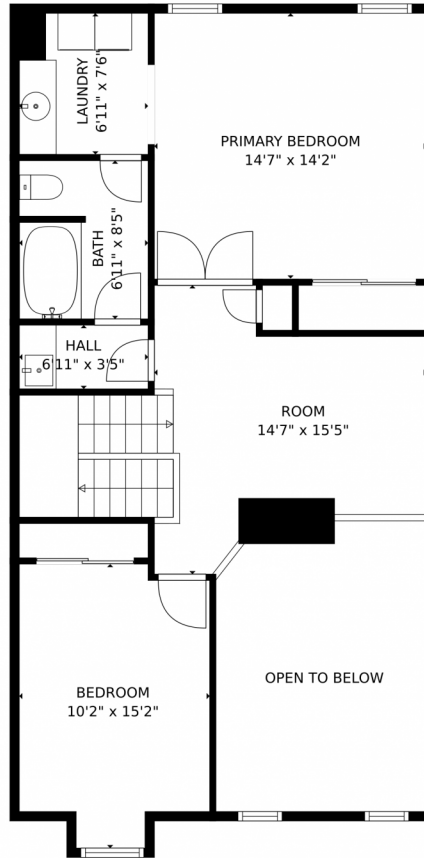
Disclaimer: Sizes and Dimensions are Approximate, Actual May Vary.



Jerry Haberkorn
303-919-5032
jhaberkorn@remax.net



2921 W Long Drive, Unit C, Littleton, CO 80120 – Upper Level



TOTAL: 1848 sq. ft
Below Ground: 534 sq. ft, FLOOR 2: 544 sq. ft, FLOOR 3: 770 sq. ft
EXCLUDED AREAS: GARAGE: 433 sq. ft, PORCH: 121 sq. ft, OPEN TO BELOW: 166 sq. ft
MEASUREMENTS CALCULATED BY V1Photos.com ARE DEEMED HIGHLY RELIABLE BUT NOT GUARANTEED.



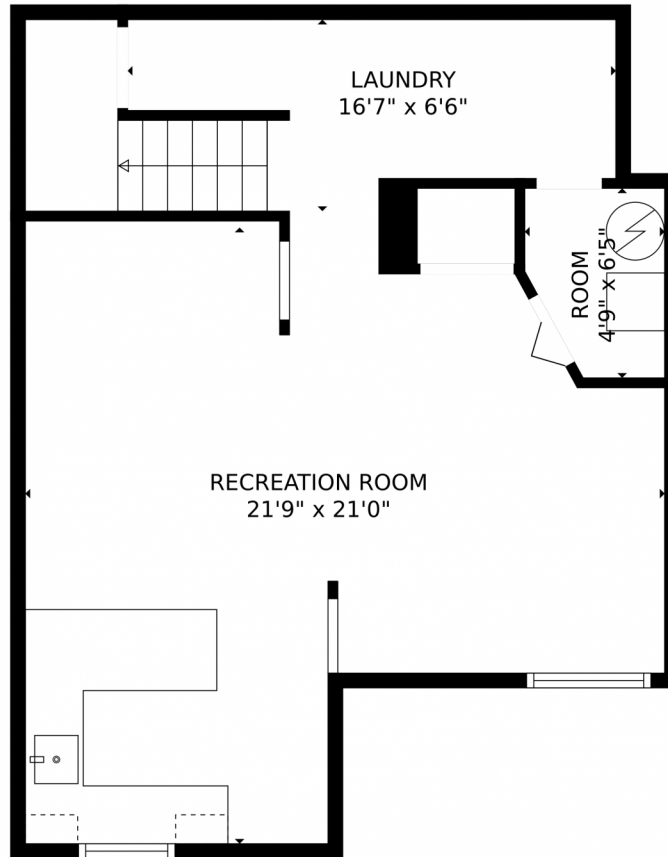
Disclaimer: Sizes and Dimensions are Approximate, Actual May Vary.



Jerry Haberkorn
303-919-5032
jhaberkorn@remax.net



2921 W Long Drive, Unit C, Littleton, CO 80120 – Lower Level



TOTAL: 1848 sq. ft
Below Ground: 534 sq. ft, FLOOR 2: 544 sq. ft, FLOOR 3: 770 sq. ft
EXCLUDED AREAS: GARAGE: 433 sq. ft, PORCH: 121 sq. ft, OPEN TO BELOW: 166 sq. ft
MEASUREMENTS CALCULATED BY V1Photos.com ARE DEEMED HIGHLY RELIABLE BUT NOT GUARANTEED.



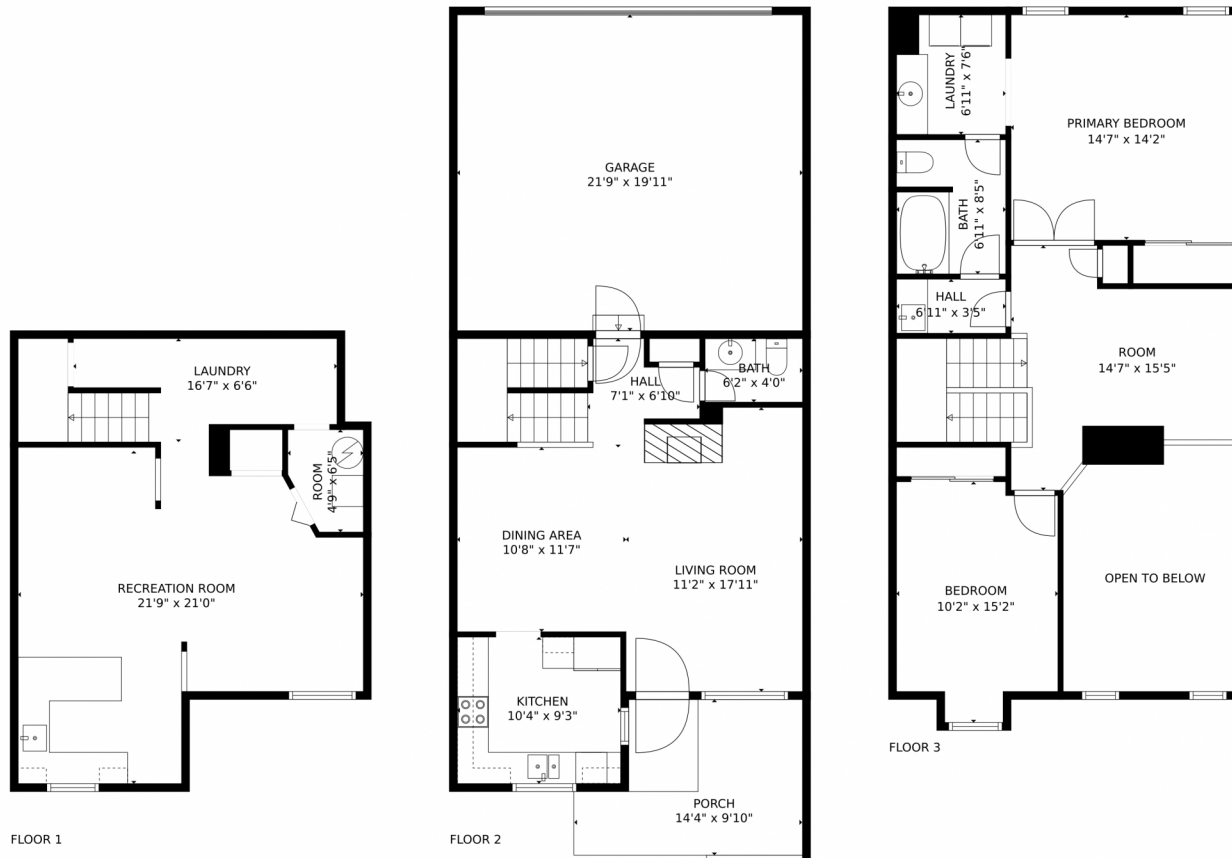
Disclaimer: Sizes and Dimensions are Approximate, Actual May Vary.



Jerry Haberkorn
303-919-5032
jhaberkorn@remax.net



2921 W Long Drive, Unit C, Littleton, CO 80120 – All Levels



TOTAL: 1848 sq. ft
Below Ground: 534 sq. ft, FLOOR 2: 544 sq. ft, FLOOR 3: 770 sq. ft
EXCLUDED AREAS: GARAGE: 433 sq. ft, PORCH: 121 sq. ft, OPEN TO BELOW: 166 sq. ft
MEASUREMENTS CALCULATED BY V1Photos.com ARE DEEMED HIGHLY RELIABLE BUT NOT GUARANTEED.



Disclaimer: Sizes and Dimensions are Approximate, Actual May Vary.



Jerry Haberkorn
303-919-5032
jhaberkorn@remax.net

