


COMPASS

6293 Poppy Court
Arvada, CO 80403
COMMUNITY: Boyd Pond


MLS # 3737242
PRICE \$500,000



 Townhouse

 1548 SQFT

 3 Beds

 2/1 Baths

 2 Car

PROPERTY DETAILS

Welcome to 6293 Poppy Court, Unit C, in Arvada, Colorado. This charming home offers comfort, style, and convenience. The exterior features a cozy patio and a fenced yard. Inside, the bright living area is perfect for entertaining. The modern kitchen opens to a dining area. The home has three bedrooms, including a luxurious primary suite. There are two and a half bathrooms, wood floors installed in 2020, and fresh paint and carpet. The neighborhood offers parks, schools, shopping, and dining. Schedule a showing today to discover more.



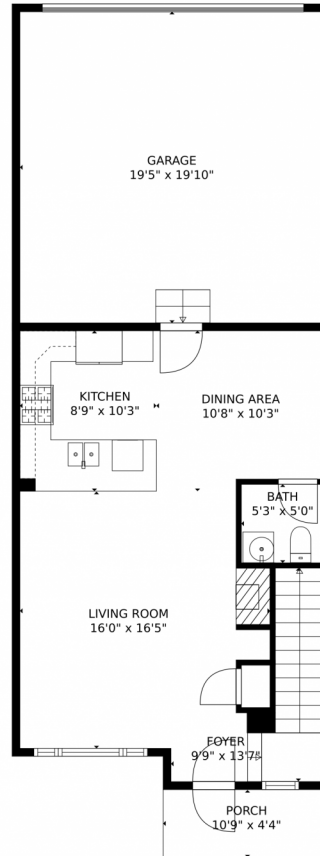
Andrea Osmond
303-250-0809
andrea.osmond@compass.com
<https://andrewithcompass.com/agent>



Scan code
for more
property
details



6293 Poppy Court, Arvada, CO 80403 – Main Level



TOTAL: 1461 sq. ft
FLOOR 1: 539 sq. ft, FLOOR 2: 922 sq. ft
EXCLUDED AREAS: PORCH: 47 sq. ft, GARAGE: 386 sq. ft

MEASUREMENTS CALCULATED BY V1Photos.com ARE DEEMED HIGHLY RELIABLE BUT NOT GUARANTEED.



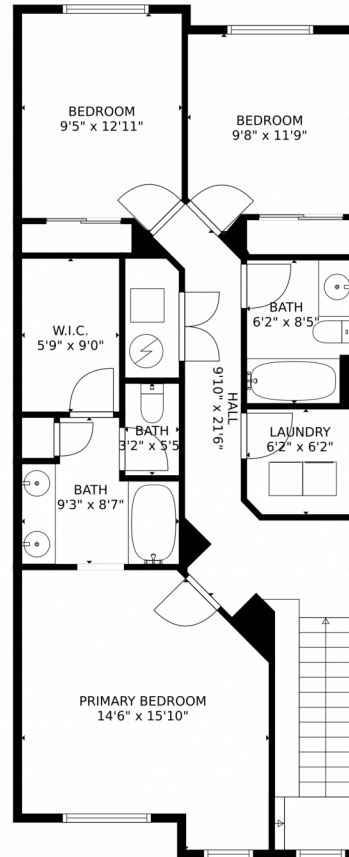
Disclaimer: Sizes and Dimensions are Approximate, Actual May Vary.



Andrea Osmond
303-250-0809
andrea.osmond@compass.com
<https://andrewithcompass.com/agent>



6293 Poppy Court, Arvada, CO 80403 – Upper Level



TOTAL: 1461 sq. ft
FLOOR 1: 539 sq. ft, FLOOR 2: 922 sq. ft
EXCLUDED AREAS: PORCH: 47 sq. ft, GARAGE: 386 sq. ft

MEASUREMENTS CALCULATED BY V1Photos.com ARE DEEMED HIGHLY RELIABLE BUT NOT GUARANTEED.



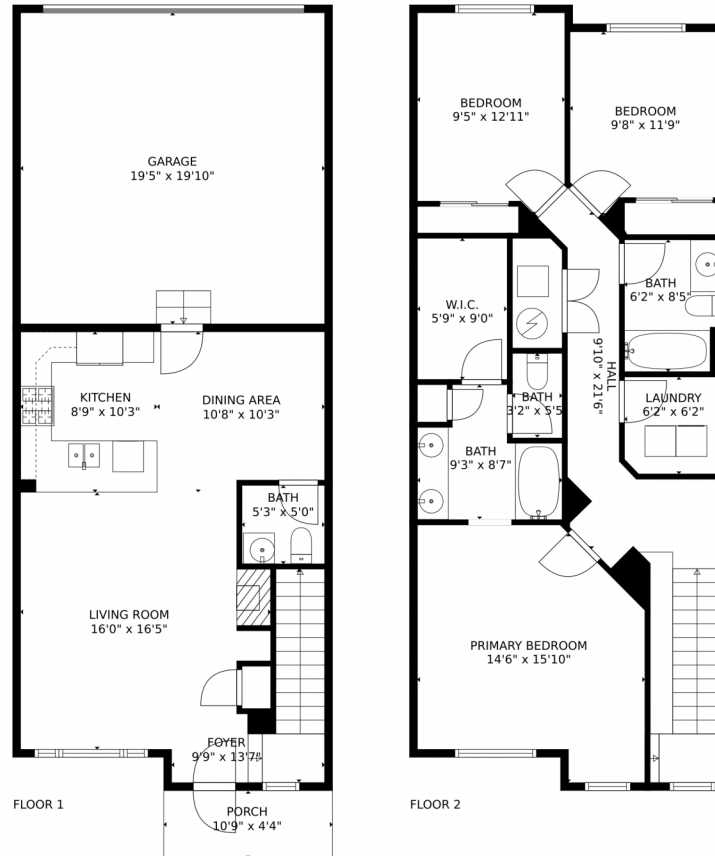
Disclaimer: Sizes and Dimensions are Approximate, Actual May Vary.



Andrea Osmond
303-250-0809
andrea.osmond@compass.com
<https://andrewithcompass.com/agent>



6293 Poppy Court, Arvada, CO 80403 – All Levels



TOTAL: 1461 sq. ft
FLOOR 1: 539 sq. ft, FLOOR 2: 922 sq. ft
EXCLUDED AREAS: PORCH: 47 sq. ft, GARAGE: 386 sq. ft

MEASUREMENTS CALCULATED BY V1Photos.COM ARE DEEMED HIGHLY RELIABLE BUT NOT GUARANTEED.



Disclaimer: Sizes and Dimensions are Approximate, Actual May Vary.



Andrea Osmond
303-250-0809
andrea.osmond@compass.com
<https://andrewithcompass.com/agent>

