

568 Slalom Drive
Granby, CO 80446



Single Family



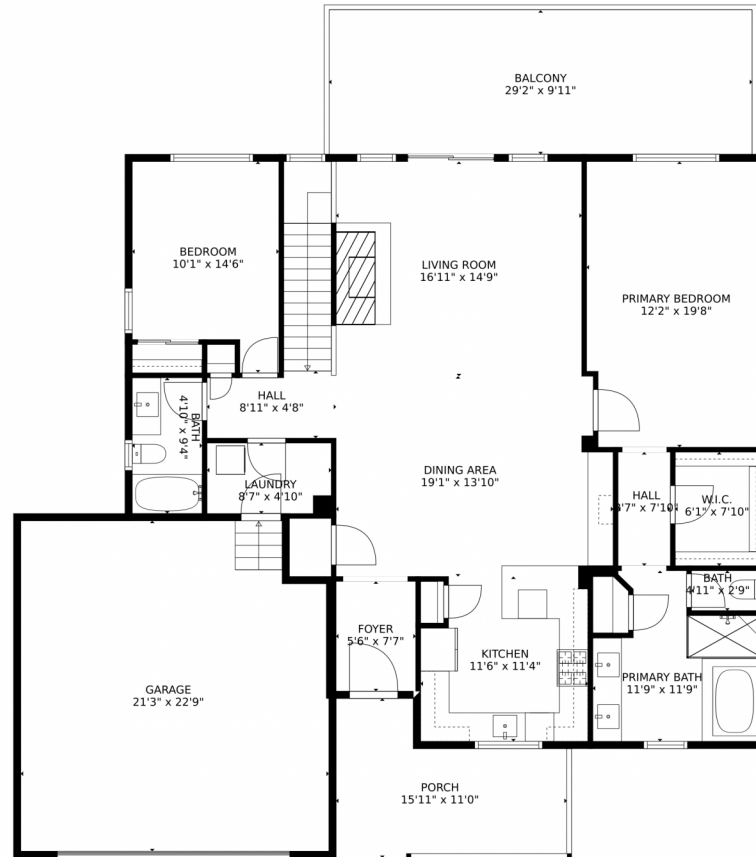
3200 SQFT



Jack Gerstein
303-886-9616
jack@winterparkjack.com
<https://www.mountainlifestyle Realty.com/>



568 Slalom Drive, Granby, CO 80446 – main level



TOTAL: 2970 sq. ft
Below Ground: 1461 sq. ft, FLOOR 2: 1509 sq. ft
EXCLUDED AREAS: ELECTRICAL ROOM: 35 sq. ft, GARAGE: 468 sq. ft, PORCH: 141 sq. ft,
BALCONY: 290 sq. ft

MEASUREMENTS CALCULATED BY V1Photos.com ARE DEEMED HIGHLY RELIABLE BUT NOT GUARANTEED.



Disclaimer: Sizes and Dimensions are Approximate, Actual May Vary.



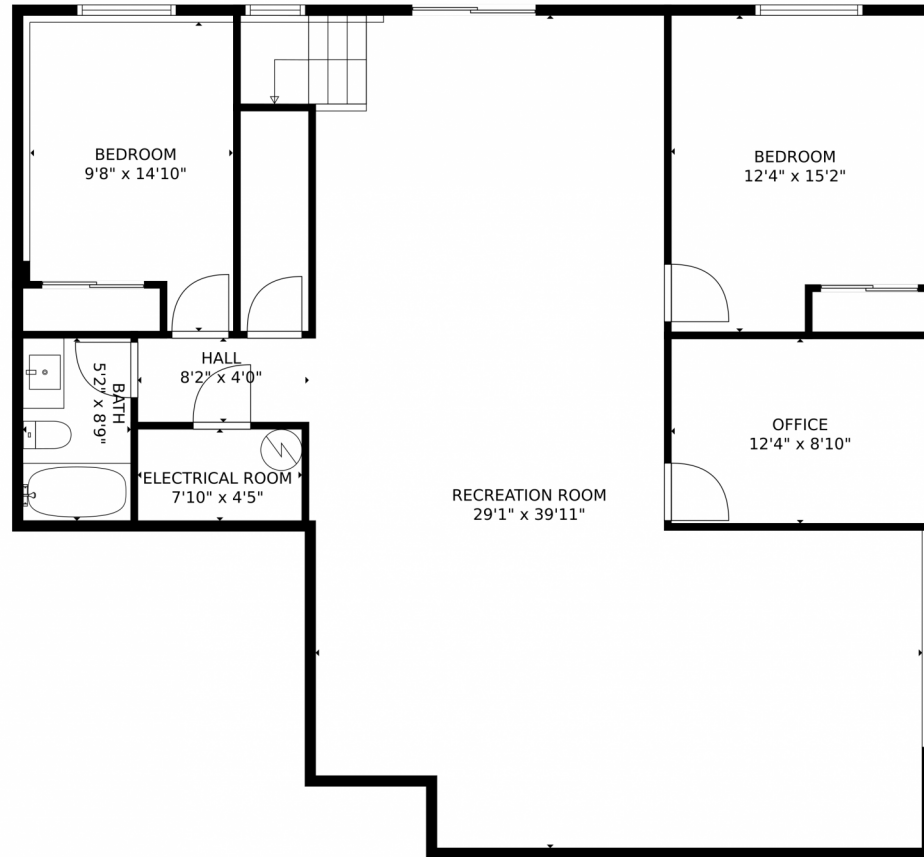
Jack Gerstein
303-886-9616
jack@winterparkjack.com
<https://www.mountainlifestyle Realty.com/>



Scan code
for more
property
details



568 Slalom Drive, Granby, CO 80446 – lower level



TOTAL: 2970 sq. ft
Below Ground: 1461 sq. ft, FLOOR 2: 1509 sq. ft
EXCLUDED AREAS: ELECTRICAL ROOM: 35 sq. ft, GARAGE: 468 sq. ft, PORCH: 141 sq. ft,
BALCONY: 290 sq. ft

MEASUREMENTS CALCULATED BY V1Photos.com ARE DEEMED HIGHLY RELIABLE BUT NOT GUARANTEED.



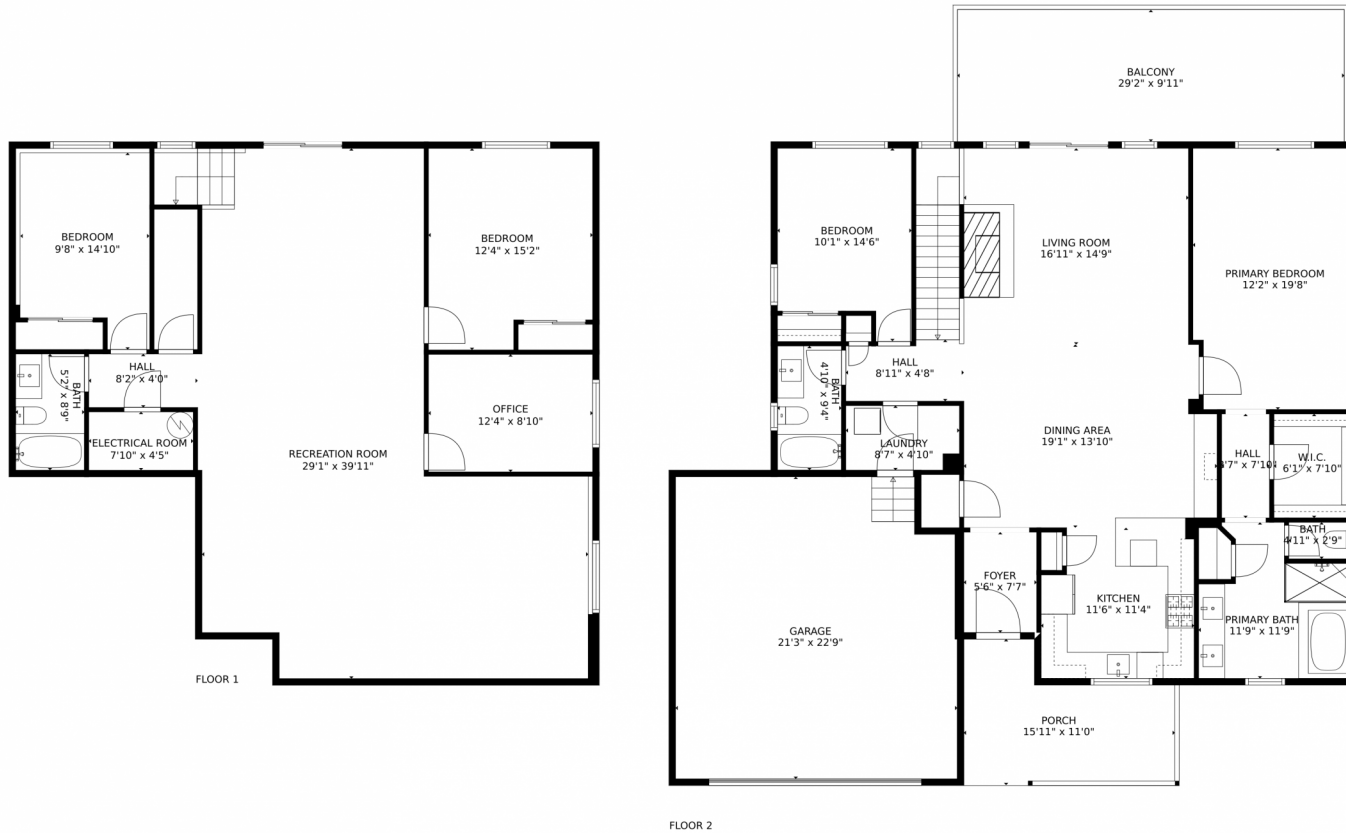
Disclaimer: Sizes and Dimensions are Approximate, Actual May Vary.



Jack Gerstein
303-886-9616
jack@winterparkjack.com
<https://www.mountainlifestyle Realty.com/>



568 Slalom Drive, Granby, CO 80446 – upper level



TOTAL: 2970 sq. ft
Below Ground: 1461 sq. ft, FLOOR 2: 1509 sq. ft
EXCLUDED AREAS: ELECTRICAL ROOM: 35 sq. ft, GARAGE: 468 sq. ft, PORCH: 141 sq. ft,
BALCONY: 290 sq. ft

MEASUREMENTS CALCULATED BY V1Photos.COM ARE DEEMED HIGHLY RELIABLE BUT NOT GUARANTEED.



Disclaimer: Sizes and Dimensions are Approximate, Actual May Vary.



Jack Gerstein
303-886-9616
jack@winterparkjack.com
<https://www.mountainlifestyle Realty.com/>



Scan code
for more
property
details

