



Single Family



5439 SQFT



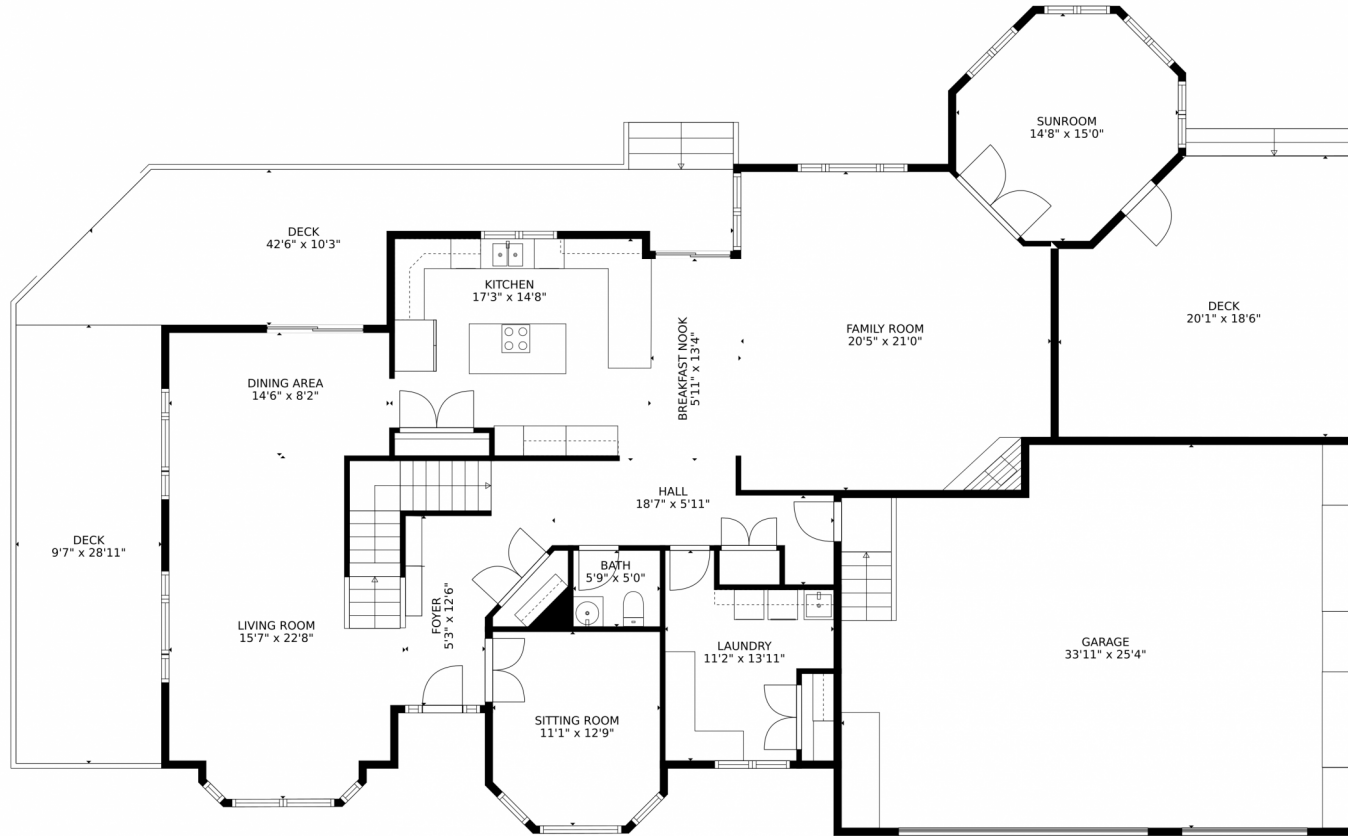
Jenna and Patrick McMenaman
303-912-0338
jenna@madisonprops.com



Scan code
for more
property
details



7197 Timbers Drive, Evergreen, CO 80439 – main level



TOTAL: 4879 sq. ft
Below Ground: 1287 sq. ft, FLOOR 2: 1925 sq. ft, FLOOR 3: 1667 sq. ft
EXCLUDED AREAS: ELECTRICAL ROOM: 282 sq. ft, GARAGE: 815 sq. ft, DECK: 930 sq. ft,
OPEN TO BELOW: 451 sq. ft

MEASUREMENTS CALCULATED BY V1Photos.com ARE DEEMED HIGHLY RELIABLE BUT NOT GUARANTEED.



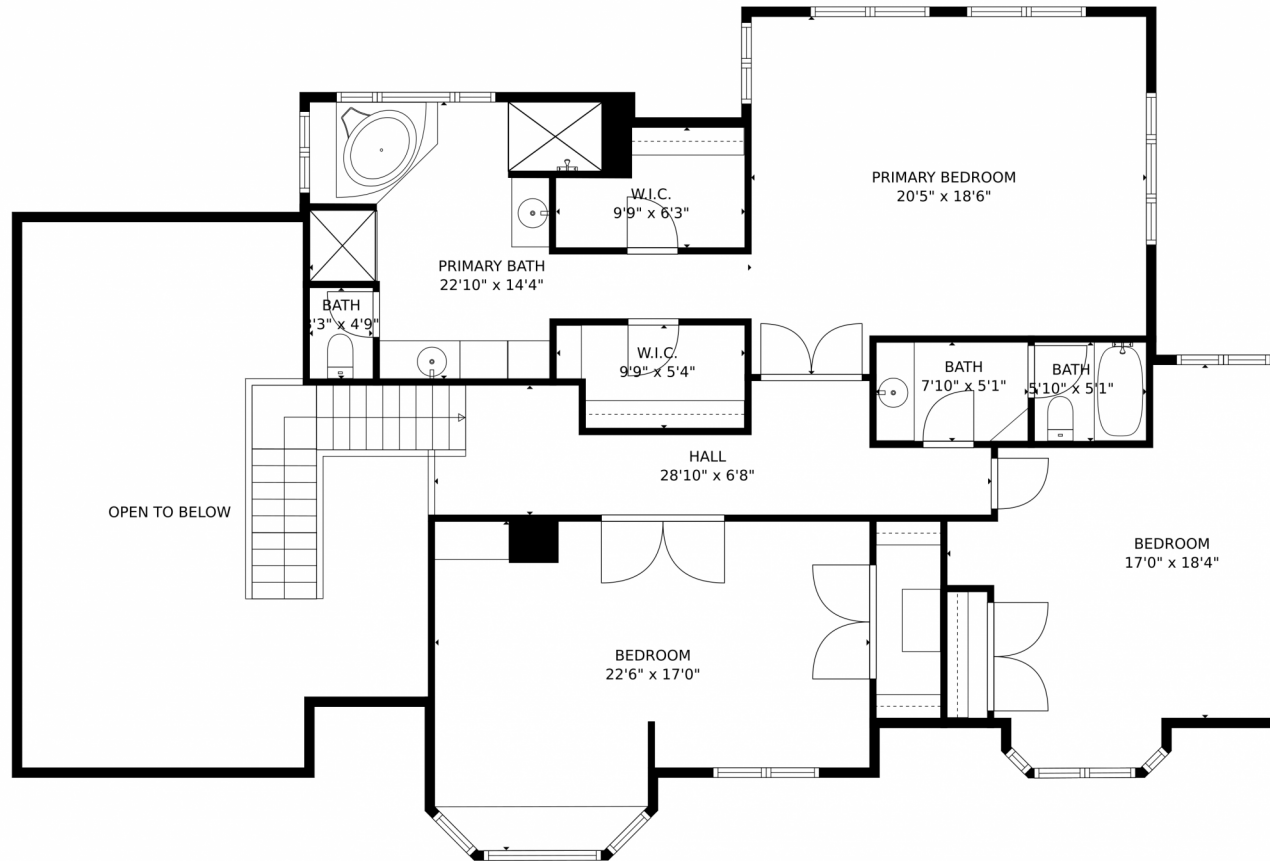
Disclaimer: Sizes and Dimensions are Approximate, Actual May Vary.



Jenna and Patrick McMenaman
303-912-0338
jenna@madisonprops.com



7197 Timbers Drive, Evergreen, CO 80439 – upper level



TOTAL: 4879 sq. ft
Below Ground: 1287 sq. ft, FLOOR 2: 1925 sq. ft, FLOOR 3: 1667 sq. ft
EXCLUDED AREAS: ELECTRICAL ROOM: 282 sq. ft, GARAGE: 815 sq. ft, DECK: 930 sq. ft,
OPEN TO BELOW: 451 sq. ft

MEASUREMENTS CALCULATED BY V1Photos.com ARE DEEMED HIGHLY RELIABLE BUT NOT GUARANTEED.



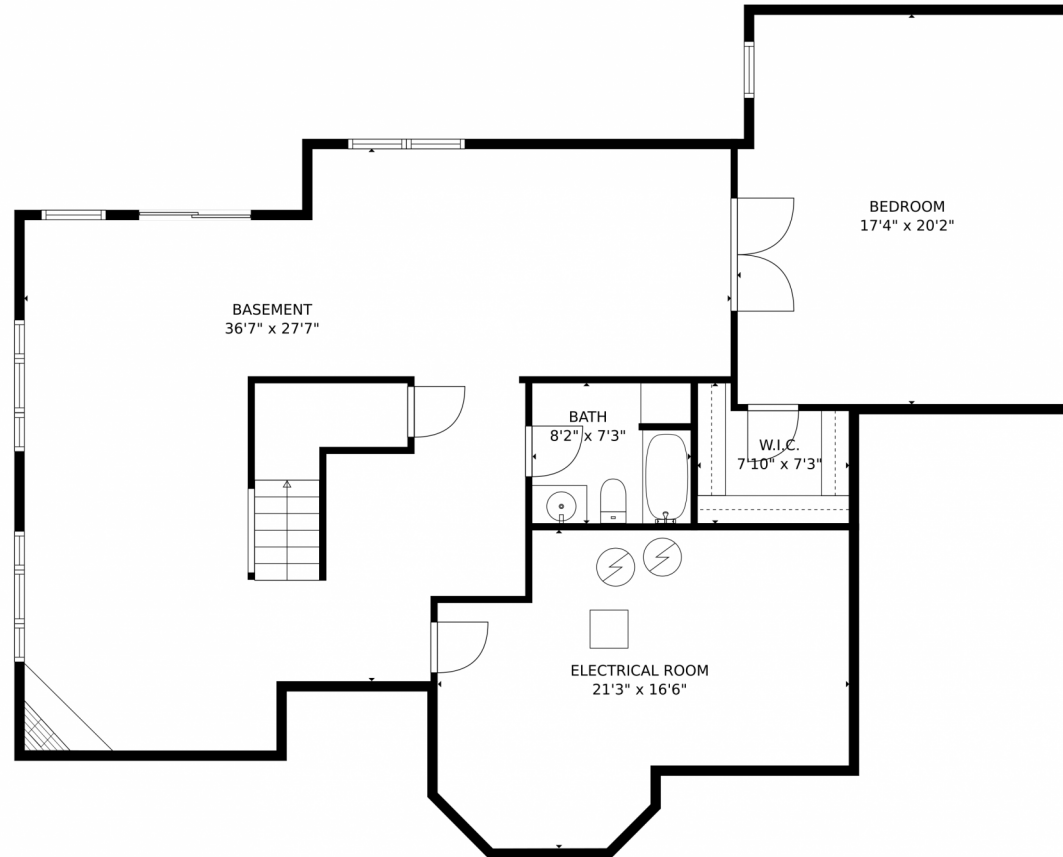
Disclaimer: Sizes and Dimensions are Approximate, Actual May Vary.



Jenna and Patrick McMenaman
303-912-0338
jenna@madisonprops.com



7197 Timbers Drive, Evergreen, CO 80439 – lower level



TOTAL: 4879 sq. ft
Below Ground: 1287 sq. ft, FLOOR 2: 1925 sq. ft, FLOOR 3: 1667 sq. ft
EXCLUDED AREAS: ELECTRICAL ROOM: 282 sq. ft, GARAGE: 815 sq. ft, DECK: 930 sq. ft,
OPEN TO BELOW: 451 sq. ft

MEASUREMENTS CALCULATED BY V1Photos.com ARE DEEMED HIGHLY RELIABLE BUT NOT GUARANTEED.



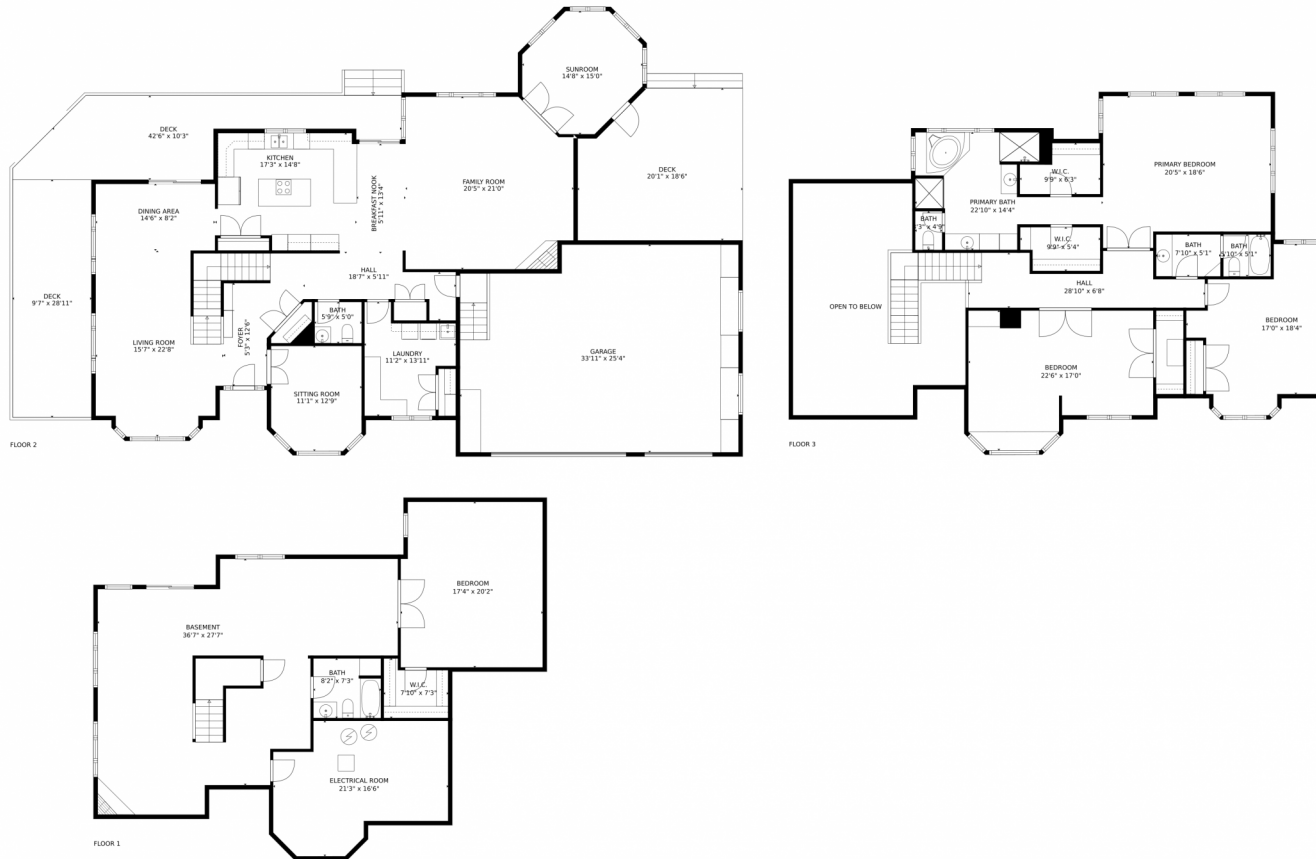
Disclaimer: Sizes and Dimensions are Approximate, Actual May Vary.



Jenna and Patrick McMenaman
303-912-0338
jenna@madisonprops.com



7197 Timbers Drive, Evergreen, CO 80439 – all levels



TOTAL: 4879 sq. ft
Below Ground: 1287 sq. ft, FLOOR 2: 1925 sq. ft, FLOOR 3: 1667 sq. ft
EXCLUDED AREAS: ELECTRICAL ROOM: 282 sq. ft, GARAGE: 815 sq. ft, DECK: 930 sq. ft,
OPEN TO BELOW: 451 sq. ft

MEASUREMENTS CALCULATED BY V1Photos.COM ARE DEEMED HIGHLY RELIABLE BUT NOT GUARANTEED.



Disclaimer: Sizes and Dimensions are Approximate, Actual May Vary.



Jenna and Patrick McMenaman
303-912-0338
jenna@madisonprops.com

