



826 Palmetto Street
West Palm Beach, FL 33405

MLS
RX-10987050
PRICE \$539,900

CHARMING 1920's TUDOR COTTAGE



Single Family 1483 SQFT 2 Beds 1 Baths 0.19 Acre

PROPERTY DETAILS

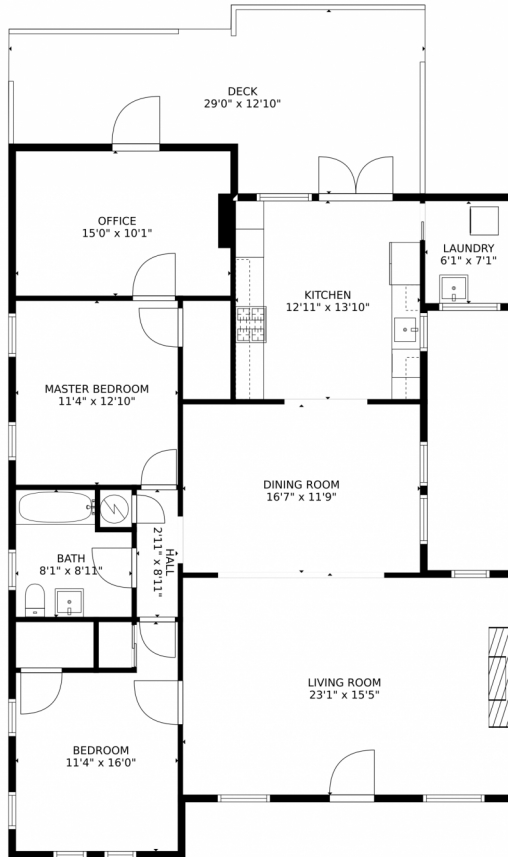
1920's era Traditional Tudor Cottage home boasts architectural details from the 20's like the front paneled cypress door, Pecky Cypress ceilings along with modern features like the 2019 Standing Seam metal roof and impact windows. Renovated Kitchen with Quartz Counters, SS appliances, 42 inch two toned cabinets and Gas cooking. The dining room features a beautiful wood coffered ceiling. The laundry area is conveniently located off the kitchen and includes a gas dryer. French doors in both the back bonus room and the kitchen open onto a large deck recently restored with maintenance free Trex decking. The bonus room is perfect for a home office, den, nursery, or even luxury full bath! Walls of windows with views into the tropical garden landscaping with fruit trees and flowering plants provide a serene and private setting. Ample storage throughout and the oversized lot provides opportunity for a future pool. Minutes for The Park at West Palm, a public upscale golf course featuring night golf under the lights! The Palm Beach Zoo and shopping are just around the corner too.



Chris Dyer
301-343-9279
chris@ebstonerealty.com
<https://www.EbStoneRealty.com>



826 Palmetto Street, West Palm Beach, FL 33405 – Whole house Floorplan



TOTAL: 1411 sq. ft
FLOOR 1: 1411 sq. ft
EXCLUDED AREAS: DECK: 301 sq. ft

MEASUREMENTS ARE CALCULATED BY CUBICASA TECHNOLOGY. DEEMED HIGHLY RELIABLE BUT NOT GUARANTEED.

Disclaimer: Sizes and Dimensions are Approximate, Actual May Vary.



Chris Dyer
301-343-9279
chris@ebstonerealty.com
<https://www.EbStoneRealty.com>

