




 Single Family  3420 SQFT  5 Beds  3/1 Baths  3 Car  0.13 Acre

PROPERTY DETAILS

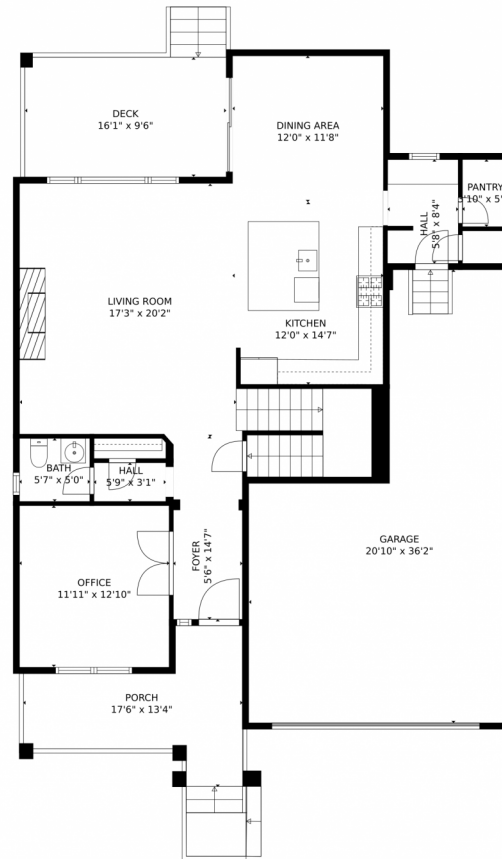
Welcome to your dream home in Looking Glass. This stunning residence offers luxurious living in a cul-de-sac with no rear neighbors. The gourmet kitchen with stainless steel appliances and quartz countertops is perfect for entertaining. The main level also features a corner office and an inviting living room with a stone fireplace. Upstairs, the owner's suite offers a spa-like bathroom and three additional bedrooms. The finished basement includes a rec room, bedroom, and full bath. Outside, enjoy the fully landscaped backyard and covered patio. Living in Looking Glass means embracing a community rich in outdoor activities and top-rated schools. Experience the perfect balance of serenity and convenience in this vibrant neighborhood.



Sean Ready
303-331-4190
sean@readygroupkw.com



16608 Desert Wine Trail, Parker, CO 80134 – Main Level



TOTAL: 3237 sq. ft
Below Ground: 778 sq. ft, FLOOR 2: 1134 sq. ft, FLOOR 3: 1325 sq. ft
EXCLUDED AREAS: STORAGE: 198 sq. ft, ELECTRICAL ROOM: 43 sq. ft, GARAGE: 564 sq. ft,
DECK: 172 sq. ft, PORCH: 172 sq. ft

MEASUREMENTS CALCULATED BY V1Photos.com ARE DEEMED HIGHLY RELIABLE BUT NOT GUARANTEED.



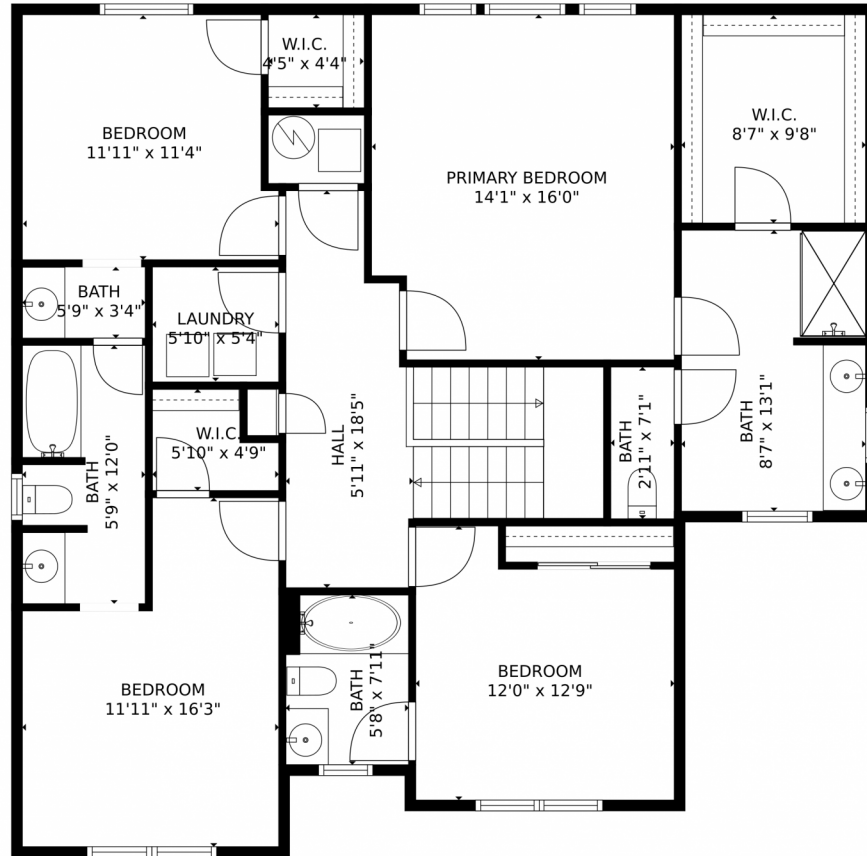
Disclaimer: Sizes and Dimensions are Approximate, Actual May Vary.



Sean Ready
303-331-4190
sean@readygroupkw.com



16608 Desert Wine Trail, Parker, CO 80134 – Upper Level



TOTAL: 3237 sq. ft
Below Ground: 778 sq. ft, FLOOR 2: 1134 sq. ft, FLOOR 3: 1325 sq. ft
EXCLUDED AREAS: STORAGE: 198 sq. ft, ELECTRICAL ROOM: 43 sq. ft, GARAGE: 564 sq. ft,
DECK: 172 sq. ft, PORCH: 172 sq. ft

MEASUREMENTS CALCULATED BY V1Photos.com ARE DEEMED HIGHLY RELIABLE BUT NOT GUARANTEED.



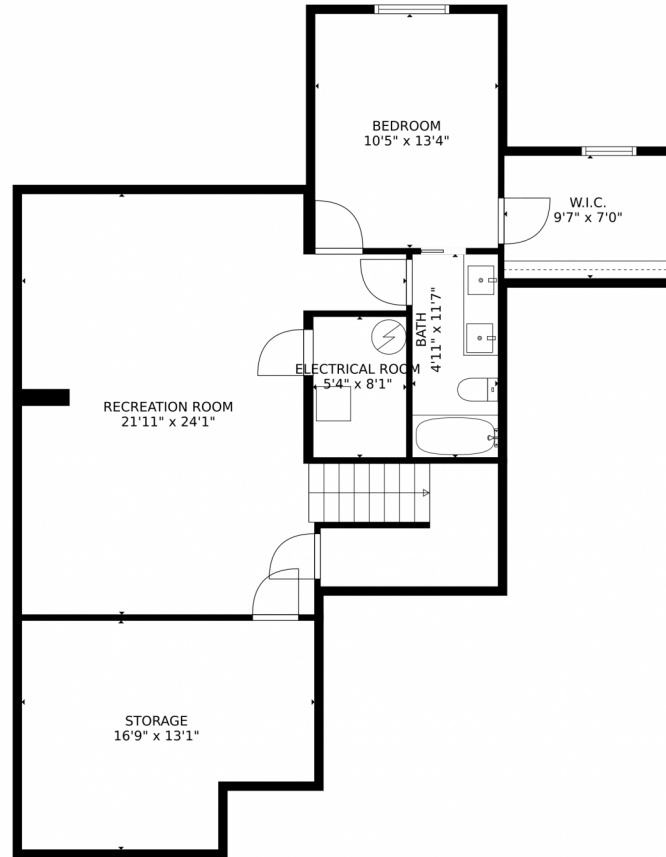
Disclaimer: Sizes and Dimensions are Approximate, Actual May Vary.



Sean Ready
303-331-4190
sean@readygroupkw.com



16608 Desert Wine Trail, Parker, CO 80134 – Lower Level



TOTAL: 3237 sq. ft
Below Ground: 778 sq. ft, FLOOR 2: 1134 sq. ft, FLOOR 3: 1325 sq. ft
EXCLUDED AREAS: STORAGE: 198 sq. ft, ELECTRICAL ROOM: 43 sq. ft, GARAGE: 564 sq. ft,
DECK: 172 sq. ft, PORCH: 172 sq. ft

MEASUREMENTS CALCULATED BY V1Photos.com ARE DEEMED HIGHLY RELIABLE BUT NOT GUARANTEED.

Disclaimer: Sizes and Dimensions are Approximate, Actual May Vary.



Sean Ready
303-331-4190
sean@readygroupkw.com



16608 Desert Wine Trail, Parker, CO 80134 – All Levels



TOTAL: 3237 sq. ft
 Below Ground: 778 sq. ft, FLOOR 2: 1134 sq. ft, FLOOR 3: 1325 sq. ft
 EXCLUDED AREAS: STORAGE: 198 sq. ft, ELECTRICAL ROOM: 43 sq. ft, GARAGE: 564 sq. ft,
 DECK: 172 sq. ft, PORCH: 172 sq. ft

MEASUREMENTS CALCULATED BY V1Photos.com ARE DEEMED HIGHLY RELIABLE BUT NOT GUARANTEED.



Disclaimer: Sizes and Dimensions are Approximate, Actual May Vary.



Sean Ready
 303-331-4190
 sean@readygroupkw.com



Scan code
 for more
 property
 details

