

Live the Pradera lifestyle in this 6000 square foot estate home on 1/2 acre



 Single Family  6174 SQFT  6 Beds  5/1 Baths  3 Car  0.5 Acre

PROPERTY DETAILS

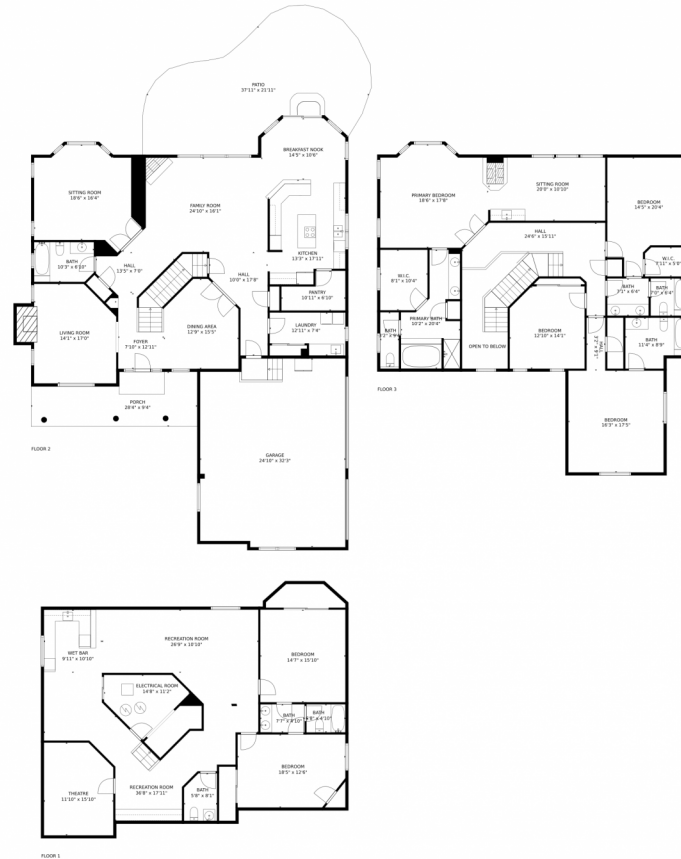
Experience the ultimate golf community lifestyle in this 6,200 sq ft masterpiece in Vistancia in Pradera. With 6 bedrooms and 5.5 bathrooms, this home offers luxurious living and easy access to a premier golf and social destination. The gourmet kitchen and spacious living areas are perfect for entertaining. The half-acre lot and open space provide privacy and tranquility. Located near the Pradera golf course and clubhouse, this estate offers luxury, comfort, and an idyllic location. Schedule a private showing today and live the country club lifestyle in Pradera.



Sean Ready
303-331-4190
sean@readygroupkw.com



5794 Distant View Place, Parker, CO 80134 – All Levels



TOTAL: 5892 sq. ft
Below Ground: 1767 sq. ft, FLOOR 2: 2019 sq. ft, FLOOR 3: 2106 sq. ft
EXCLUDED AREAS: ELECTRICAL ROOM: 120 sq. ft, UNDEFINED: 8 sq. ft, GARAGE: 776 sq. ft,
PATIO: 651 sq. ft, PORCH: 228 sq. ft, FIREPLACE: 15 sq. ft,
OPEN TO BELOW: 109 sq. ft.

MEASUREMENTS CALCULATED BY V1Photos.com ARE DEEMED HIGHLY RELIABLE BUT NOT GUARANTEED.



Disclaimer: Sizes and Dimensions are Approximate, Actual May Vary.



Sean Ready
303-331-4190
sean@readygroupkw.com



Scan code
for more
property
details

