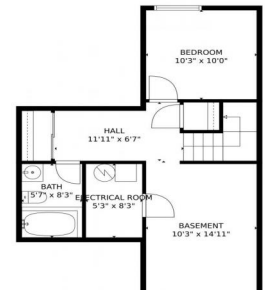


13040 West 63rd Place, Arvada, CO 80004 - 2\_13040-west-63rd-place-meadow-lake-arvada-jeff



Single Family

1578 SQFT

3 Beds

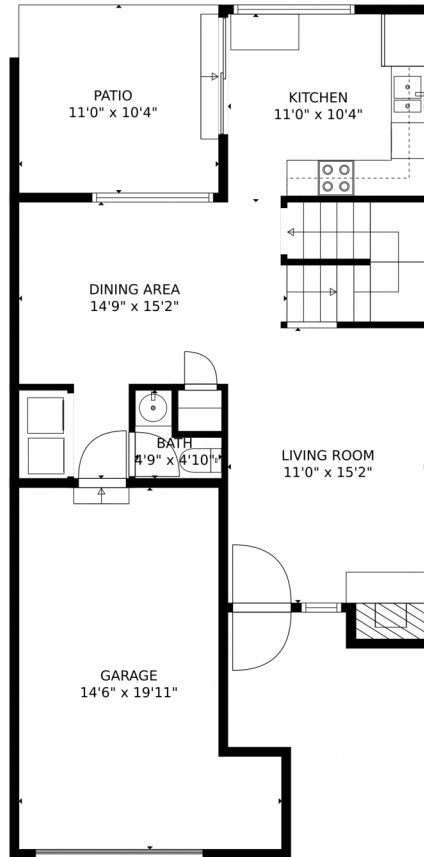
2/1 Baths



**Taylor Haas**  
 303-665-7368  
 taylorh@coloradorpm.com  
<https://www.coloradorpm.com/available-rental-properties-denver>



# 13040 West 63rd Place, Arvada, CO 80004 – Main Level



**TOTAL: 1456 sq. ft**  
Below Ground: 448 sq. ft, FLOOR 2: 532 sq. ft, FLOOR 3: 476 sq. ft  
EXCLUDED AREAS: ELECTRICAL ROOM: 43 sq. ft, GARAGE: 237 sq. ft, PATIO: 114 sq. ft,  
FIREPLACE: 6 sq. ft, OPEN TO BELOW: 166 sq. ft

MEASUREMENTS CALCULATED BY V1Photos.com ARE DEEMED HIGHLY RELIABLE BUT NOT GUARANTEED.



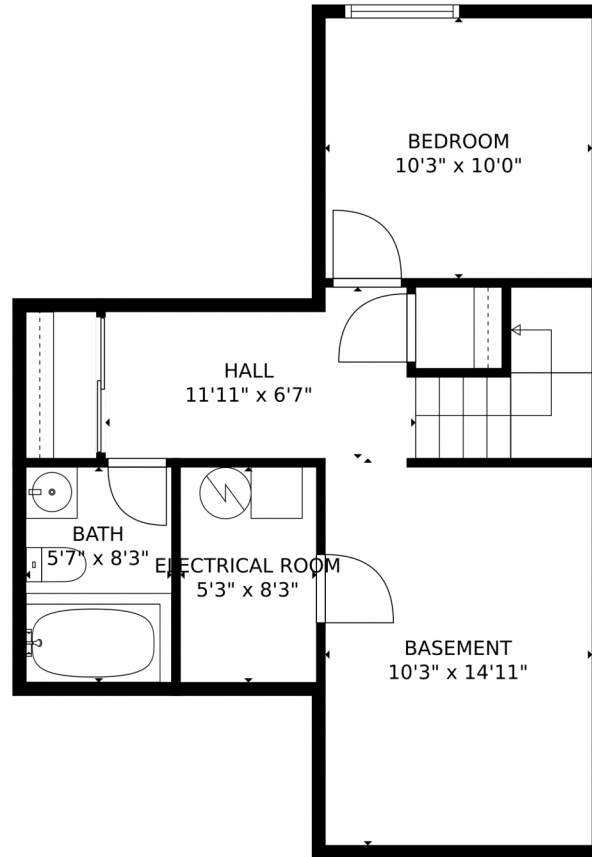
Disclaimer: Sizes and Dimensions are Approximate, Actual May Vary.



**Taylor Haas**  
303-665-7368  
taylorh@coloradorpm.com  
<https://www.coloradorpm.com/available-rental-properties-denver>



13040 West 63rd Place, Arvada, CO 80004 – 2nd Level



**TOTAL: 1456 sq. ft**  
Below Ground: 448 sq. ft, FLOOR 2: 532 sq. ft, FLOOR 3: 476 sq. ft  
EXCLUDED AREAS: ELECTRICAL ROOM: 43 sq. ft, GARAGE: 237 sq. ft, PATIO: 114 sq. ft,  
FIREPLACE: 6 sq. ft, OPEN TO BELOW: 166 sq. ft  
MEASUREMENTS CALCULATED BY V1Photos.com ARE DEEMED HIGHLY RELIABLE BUT NOT GUARANTEED.



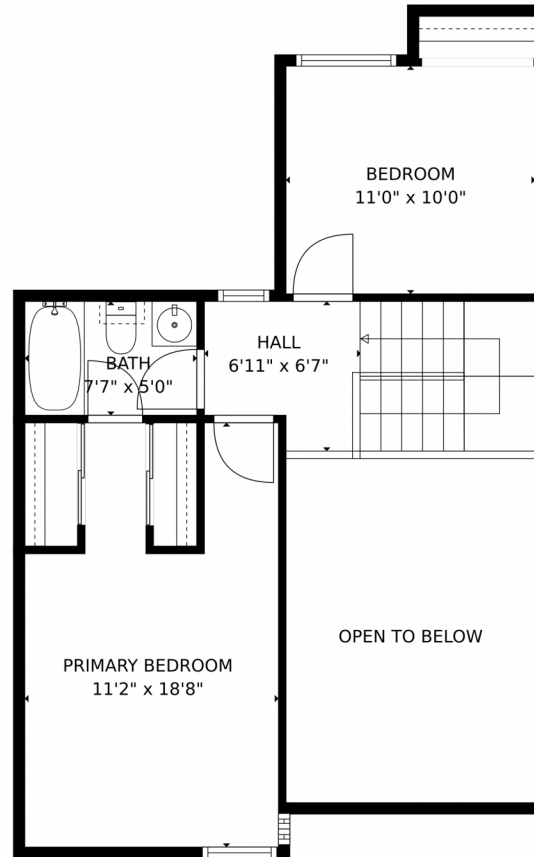
Disclaimer: Sizes and Dimensions are Approximate, Actual May Vary.



**Taylor Haas**  
303-665-7368  
taylorh@coloradorpm.com  
<https://www.coloradorpm.com/available-rental-properties-denver>



13040 West 63rd Place, Arvada, CO 80004 – Basement



**TOTAL: 1456 sq. ft**  
Below Ground: 448 sq. ft, FLOOR 2: 532 sq. ft, FLOOR 3: 476 sq. ft  
EXCLUDED AREAS: ELECTRICAL ROOM: 43 sq. ft, GARAGE: 237 sq. ft, PATIO: 114 sq. ft,  
FIREPLACE: 6 sq. ft, OPEN TO BELOW: 166 sq. ft  
MEASUREMENTS CALCULATED BY V1Photos.com ARE DEEMED HIGHLY RELIABLE BUT NOT GUARANTEED.



Disclaimer: Sizes and Dimensions are Approximate, Actual May Vary.



**Taylor Haas**  
303-665-7368  
taylorh@coloradorpm.com  
<https://www.coloradorpm.com/available-rental-properties-denver>





# 13040 West 63rd Place, Arvada, CO 80004 – All Levels



**TOTAL: 1456 sq. ft**  
Below Ground: 448 sq. ft, FLOOR 2: 532 sq. ft, FLOOR 3: 476 sq. ft  
EXCLUDED AREAS: ELECTRICAL ROOM: 43 sq. ft, GARAGE: 237 sq. ft, PATIO: 114 sq. ft,  
FIREPLACE: 6 sq. ft, OPEN TO BELOW: 166 sq. ft

MEASUREMENTS CALCULATED BY V1Photos.com ARE DEEMED HIGHLY RELIABLE BUT NOT GUARANTEED.

Disclaimer: Sizes and Dimensions are Approximate, Actual May Vary.



**Taylor Haas**

303-665-7368

taylorh@coloradorpm.com

<https://www.coloradorpm.com/available-rental-properties-denver>



Scan code  
for more  
property  
details

