




1412 15th Avenue, Greeley, CO 80631 - 2\_9967d968-49f3-4174-a6df-14e875b01428\_2



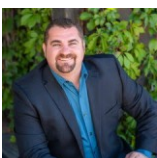
 Single Family

 2300 SQFT

 4 Beds

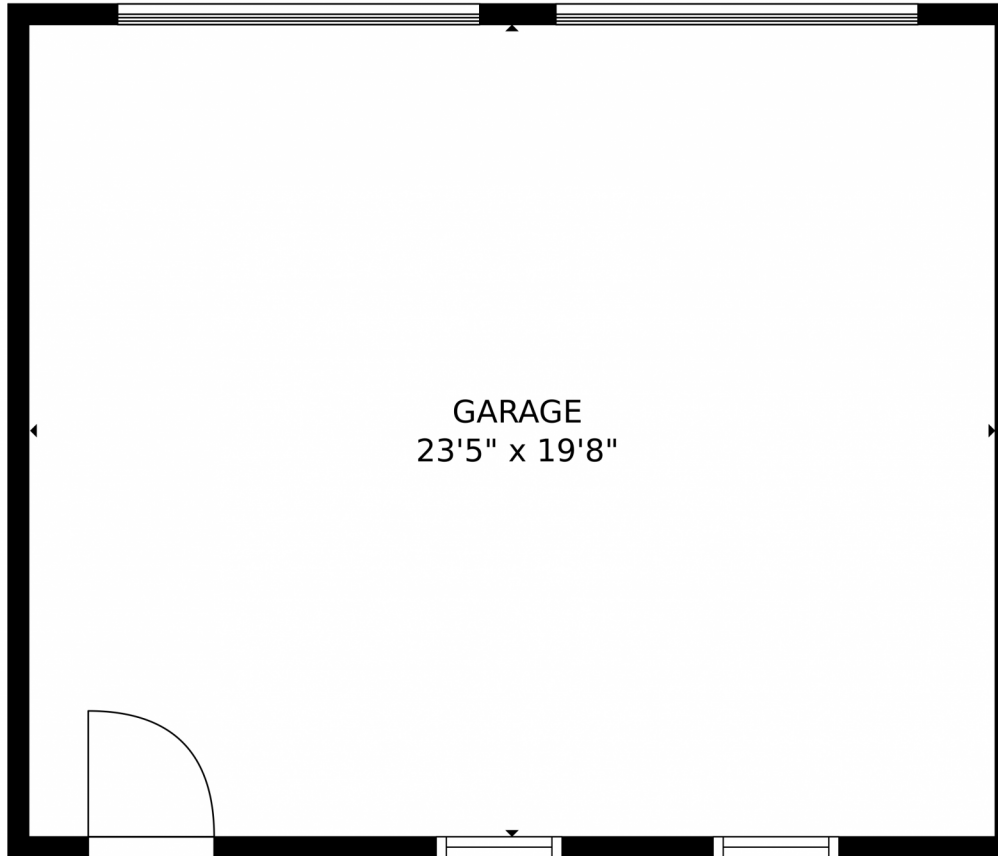
 2 Baths

 2 Car



**Brad Inhulsen**  
970-584-4144  
brad@searsrealestate.com





**TOTAL: 1506 sq. ft**  
Below Ground: 0 sq. ft, FLOOR 2: 705 sq. ft, FLOOR 3: 801 sq. ft  
EXCLUDED AREAS: GARAGE: 461 sq. ft, LAUNDRY: 72 sq. ft, PATIO: 469 sq. ft,  
PORCH: 65 sq. ft, COVERED DECK: 234 sq. ft  
MEASUREMENTS CALCULATED BY V1Photos.com ARE DEEMED HIGHLY RELIABLE BUT NOT GUARANTEED.



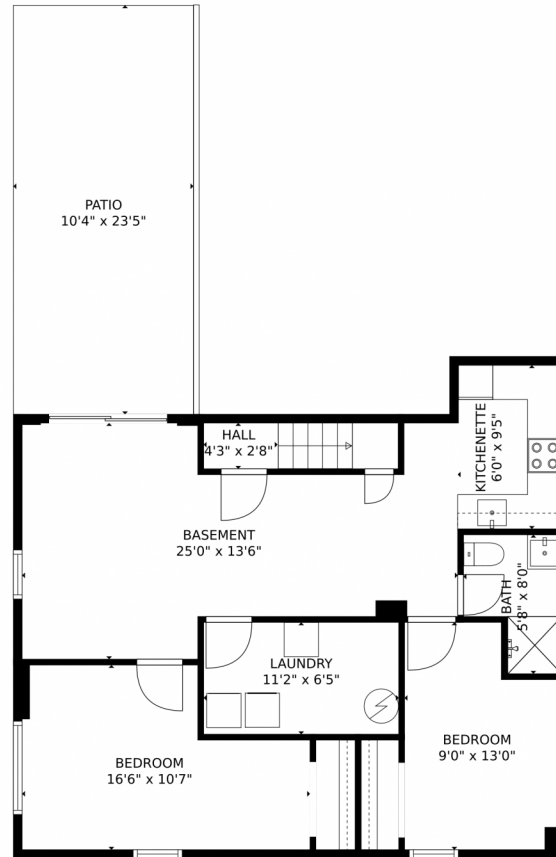
Disclaimer: Sizes and Dimensions are Approximate, Actual May Vary.



**Brad Inhulsen**  
970-584-4144  
[brad@searsrealestate.com](mailto:brad@searsrealestate.com)



Scan code  
for more  
property  
details



**TOTAL: 1506 sq. ft**  
Below Ground: 0 sq. ft, FLOOR 2: 705 sq. ft, FLOOR 3: 801 sq. ft  
EXCLUDED AREAS: GARAGE: 461 sq. ft, LAUNDRY: 72 sq. ft, PATIO: 469 sq. ft,  
PORCH: 65 sq. ft, COVERED DECK: 234 sq. ft  
MEASUREMENTS CALCULATED BY V1Photos.com ARE DEEMED HIGHLY RELIABLE BUT NOT GUARANTEED.

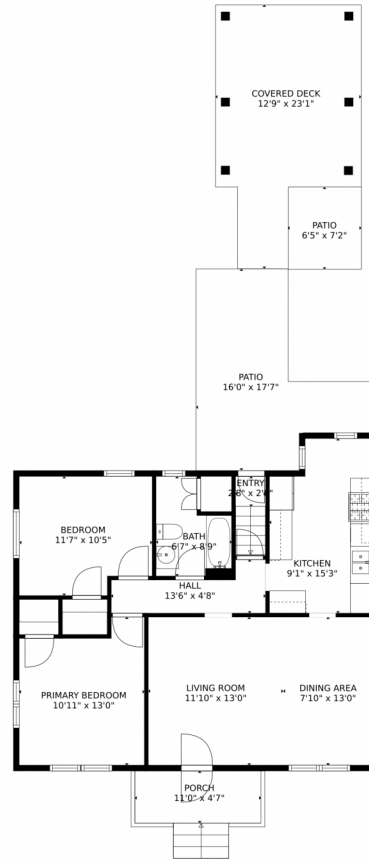


Disclaimer: Sizes and Dimensions are Approximate, Actual May Vary.



**Brad Inhulsen**  
970-584-4144  
brad@searsrealestate.com





**TOTAL: 1506 sq. ft**  
Below Ground: 0 sq. ft, FLOOR 2: 705 sq. ft, FLOOR 3: 801 sq. ft  
EXCLUDED AREAS: GARAGE: 461 sq. ft, LAUNDRY: 72 sq. ft, PATIO: 469 sq. ft,  
PORCH: 65 sq. ft, COVERED DECK: 234 sq. ft

MEASUREMENTS CALCULATED BY V1Photos.com ARE DEEMED HIGHLY RELIABLE BUT NOT GUARANTEED.



Disclaimer: Sizes and Dimensions are Approximate, Actual May Vary.



**Brad Inhulsen**  
970-584-4144  
brad@searsrealestate.com







**TOTAL: 1506 sq. ft**  
Below Ground: 0 sq. ft, FLOOR 2: 705 sq. ft, FLOOR 3: 801 sq. ft  
EXCLUDED AREAS: GARAGE: 461 sq. ft, LAUNDRY: 72 sq. ft, PATIO: 469 sq. ft,  
PORCH: 65 sq. ft, COVERED DECK: 234 sq. ft  
MEASUREMENTS CALCULATED BY V1Photos.com ARE DEEMED HIGHLY RELIABLE BUT NOT GUARANTEED.



Disclaimer: Sizes and Dimensions are Approximate, Actual May Vary.



**Brad Inhulsen**  
970-584-4144  
brad@searsrealestate.com

