









1675 South Patton Court
 Denver, CO 80219
 COMMUNITY: Mar-lee

MLS # 8586600
 PRICE \$475,000



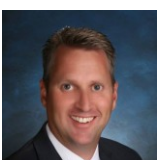
1675 South Patton Court, Denver, CO 80219 - 3, 1675-south-patton-court-mar-lee-manor-denver



-  Single Family
-  1200 SQFT
-  4 Beds
-  1/1 Baths
-  1 Car
-  0.16 Acre

PROPERTY DETAILS

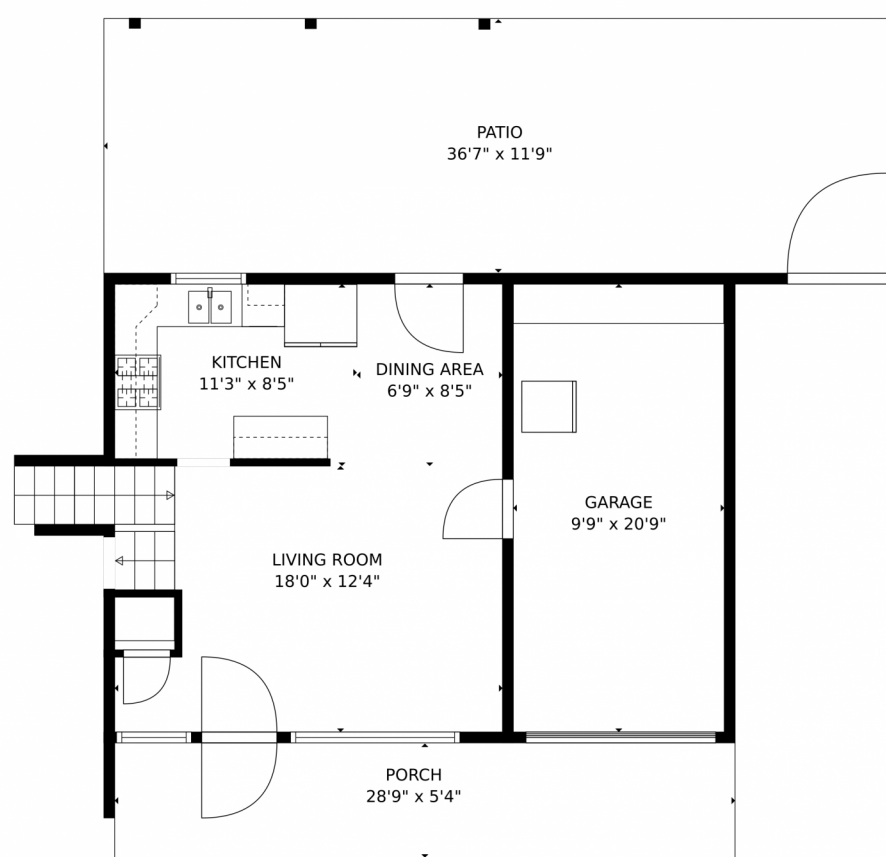
Fabulous remodeled Mid-Century Modern tri-level on a gorgeous professionally landscaped lot that sits just a stones throw from the Sanderson Gulch trail that connects to hundreds of miles of trails across the metro area. This amazing home features 4 bedrooms, 2 baths, almost 1200 sqft with an attached 1-car garage and RV parking. Updated from top to bottom with beautiful engineered floors throughout, New quartz counters, stainless steel kitchen appliances and the washer and dryer. There are newer windows throughout and new entry doors front and back. The roof was installed in 2019, the Boiler installed in 2020 along with the water heater. The electrical panel is newer, the fence is new and the radon mitigation system is already installed. The beautiful back yard has a full patio with a partial cover for those sunny summer afternoons, a sprinkler system and a storage shed. The front yard is loaded with plants and flowers that make this home the showcase of the neighborhood.



Greg Dach
 303-525-9006
 gregdach@remax.net



1675 South Patton Court, Denver, CO 80219 – Main Level



TOTAL: 1054 sq. ft
Below Ground: 347 sq. ft, FLOOR 2: 365 sq. ft, FLOOR 3: 342 sq. ft
EXCLUDED AREAS: BASEMENT: 367 sq. ft, PORCH: 154 sq. ft, PATIO: 431 sq. ft,
GARAGE: 203 sq. ft

MEASUREMENTS CALCULATED BY V1Photos.com ARE DEEMED HIGHLY RELIABLE BUT NOT GUARANTEED.



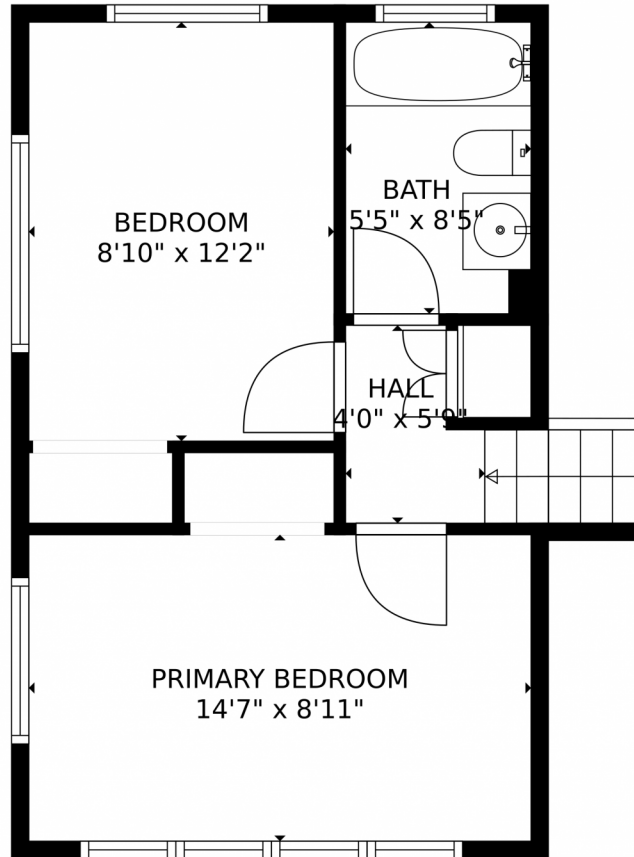
Disclaimer: Sizes and Dimensions are Approximate, Actual May Vary.



Greg Dach
303-525-9006
gregdach@remax.net



1675 South Patton Court, Denver, CO 80219 – Upper Level



TOTAL: 1054 sq. ft
Below Ground: 347 sq. ft, FLOOR 2: 365 sq. ft, FLOOR 3: 342 sq. ft
EXCLUDED AREAS: BASEMENT: 367 sq. ft, PORCH: 154 sq. ft, PATIO: 431 sq. ft,
GARAGE: 203 sq. ft
MEASUREMENTS CALCULATED BY V1Photos.com ARE DEEMED HIGHLY RELIABLE BUT NOT GUARANTEED.



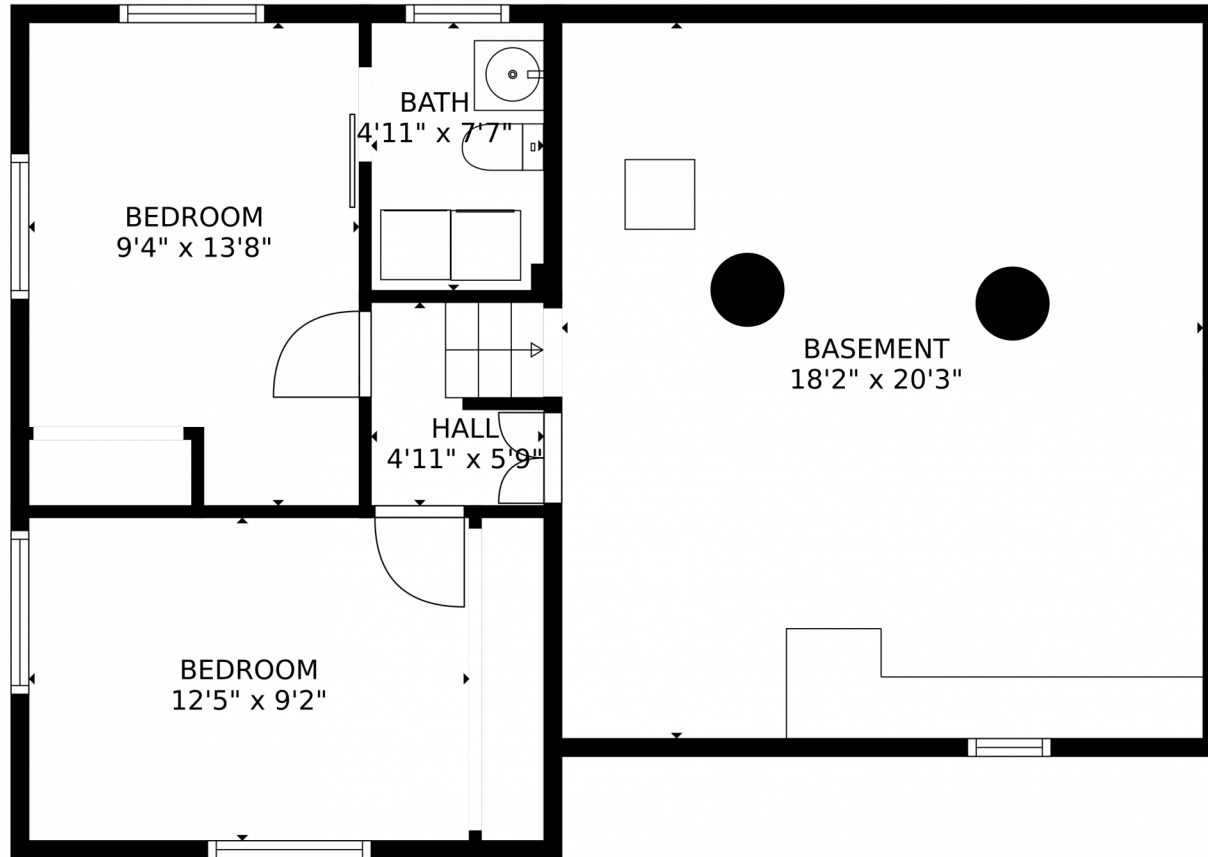
Disclaimer: Sizes and Dimensions are Approximate, Actual May Vary.



Greg Dach
303-525-9006
gregdach@remax.net



1675 South Patton Court, Denver, CO 80219 – Lower Level



TOTAL: 1054 sq. ft
Below Ground: 347 sq. ft, FLOOR 2: 365 sq. ft, FLOOR 3: 342 sq. ft
EXCLUDED AREAS: BASEMENT: 367 sq. ft, PORCH: 154 sq. ft, PATIO: 431 sq. ft,
GARAGE: 203 sq. ft
MEASUREMENTS CALCULATED BY V1Photos.com ARE DEEMED HIGHLY RELIABLE BUT NOT GUARANTEED.



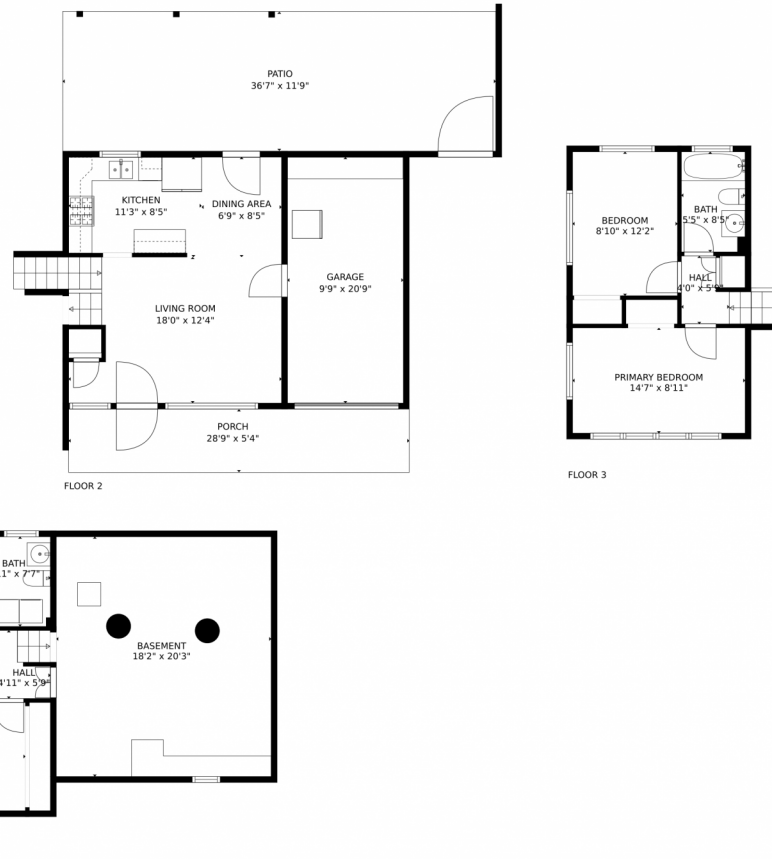
Disclaimer: Sizes and Dimensions are Approximate, Actual May Vary.



Greg Dach
303-525-9006
gregdach@remax.net



1675 South Patton Court, Denver, CO 80219 – All Levels



TOTAL: 1054 sq. ft
Below Ground: 347 sq. ft, FLOOR 2: 365 sq. ft, FLOOR 3: 342 sq. ft
EXCLUDED AREAS: BASEMENT: 367 sq. ft, PORCH: 154 sq. ft, PATIO: 431 sq. ft,
GARAGE: 203 sq. ft

MEASUREMENTS CALCULATED BY V1Photos.com ARE DEEMED HIGHLY RELIABLE BUT NOT GUARANTEED.



Disclaimer: Sizes and Dimensions are Approximate, Actual May Vary.



Greg Dach
303-525-9006
gregdach@remax.net



Scan code
for more
property
details