



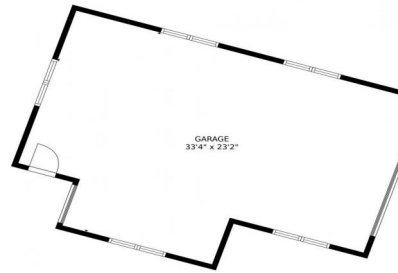
4451 Bell Mountain Drive
 Castle Rock, CO 80104
 COMMUNITY: Bell Mountain Ranch

MLS # 9834706

PRICE
 \$1,400,000



4451 Bell Mountain Drive, Castle Rock, CO 80104 - floorplan_single.2



Single Family



4567 SQFT



4 Beds



3/1 Baths



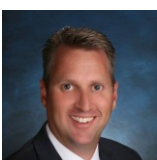
5 Car



6.5 Acre

PROPERTY DETAILS

Beautiful stucco and stone walkout ranch on 6.47 acres with stunning views. 4500 sqft, 4 bedrooms, 4 baths, and a main floor study. Attached 3-car garage and a large detached garage with RV door. Covered front porch, spacious living room with fireplace, formal dining room, and study. Primary suite with fireplace, luxurious bath, and walk-in closet. Cook's kitchen with alder cabinets and granite counters. Hearthroom with fireplace. Trex deck with mountain views. Lower level with family room, wet bar, and patio. Guest suite and additional bedrooms. Amazing Colorado property.



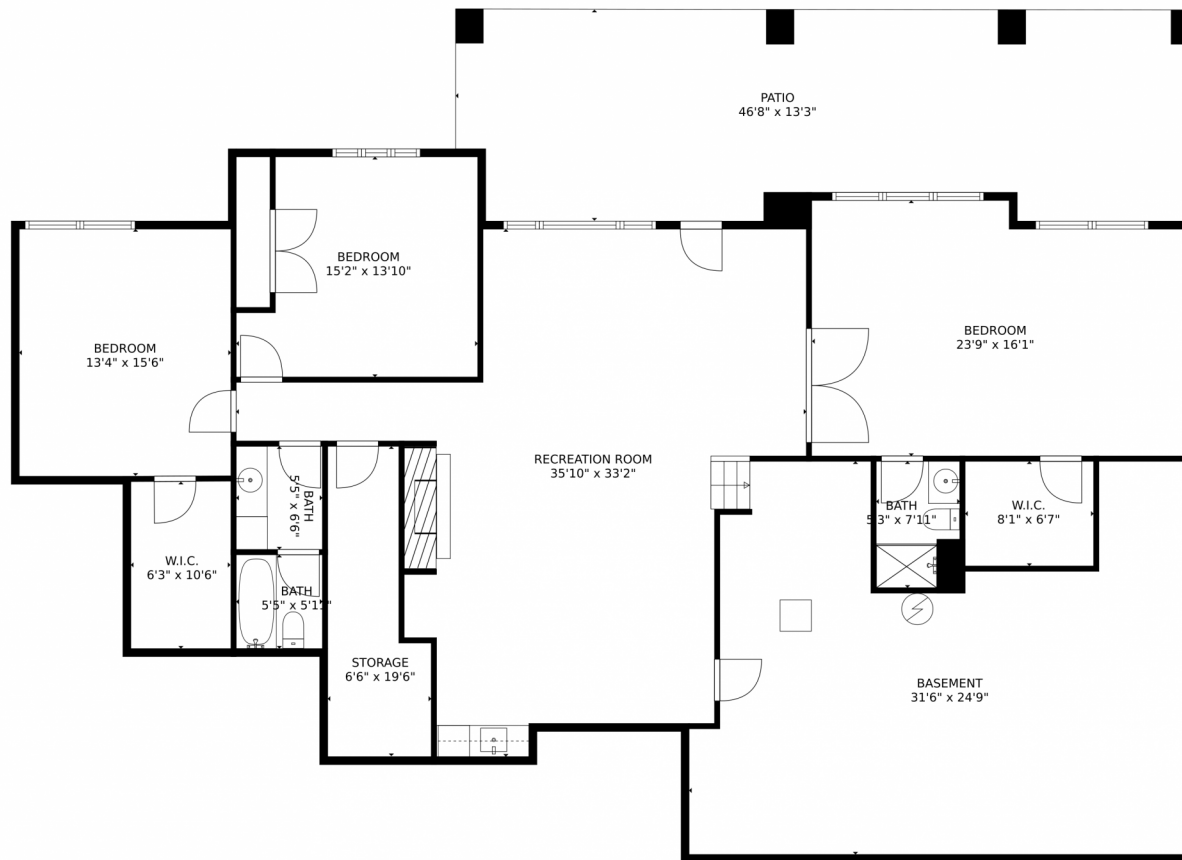
Greg Dach
 303-525-9006
 gregdach@remax.net



Scan code
 for more
 property
 details



4451 Bell Mountain Drive, Castle Rock, CO 80104 – Lower Level

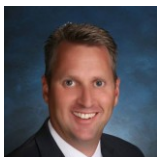


TOTAL: 4258 sq. ft
Below Ground: 1771 sq. ft, FLOOR 2: 2487 sq. ft, FLOOR 3: 0 sq. ft
EXCLUDED AREAS: STORAGE: 102 sq. ft, BASEMENT: 633 sq. ft, PATIO: 623 sq. ft,
PORCH: 155 sq. ft, BALCONY: 537 sq. ft, GARAGE: 1354 sq. ft,
EMBEDDEDWINDOW: 6 sq. ft

MEASUREMENTS CALCULATED BY V1Photos.com ARE DEEMED HIGHLY RELIABLE BUT NOT GUARANTEED.



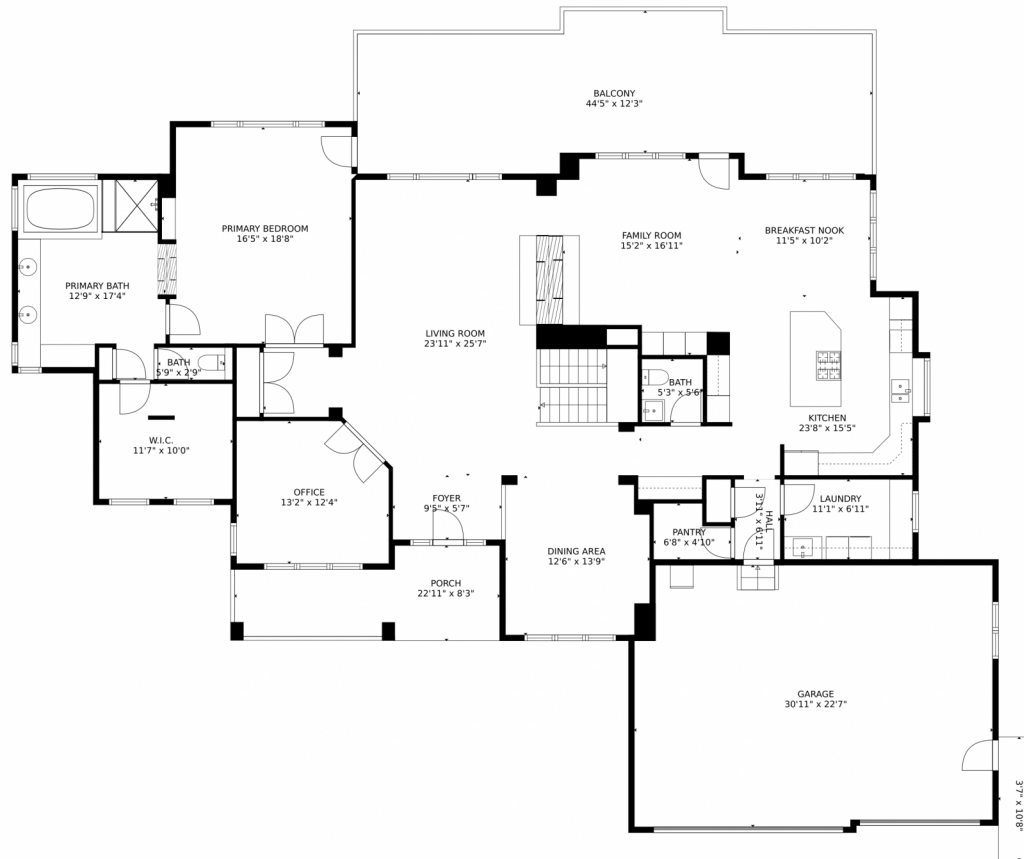
Disclaimer: Sizes and Dimensions are Approximate, Actual May Vary.



Greg Dach
303-525-9006
gregdach@remax.net



4451 Bell Mountain Drive, Castle Rock, CO 80104 – Main Level

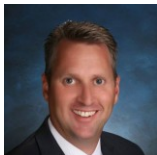


TOTAL: 4258 sq. ft
Below Ground: 1771 sq. ft, FLOOR 2: 2487 sq. ft, FLOOR 3: 0 sq. ft
EXCLUDED AREAS: STORAGE: 102 sq. ft, BASEMENT: 633 sq. ft, PATIO: 623 sq. ft,
PORCH: 155 sq. ft, BALCONY: 537 sq. ft, GARAGE: 1354 sq. ft,
EMBEDDEDWINDOW: 6 sq. ft

MEASUREMENTS CALCULATED BY V1Photos.COM ARE DEEMED HIGHLY RELIABLE BUT NOT GUARANTEED.



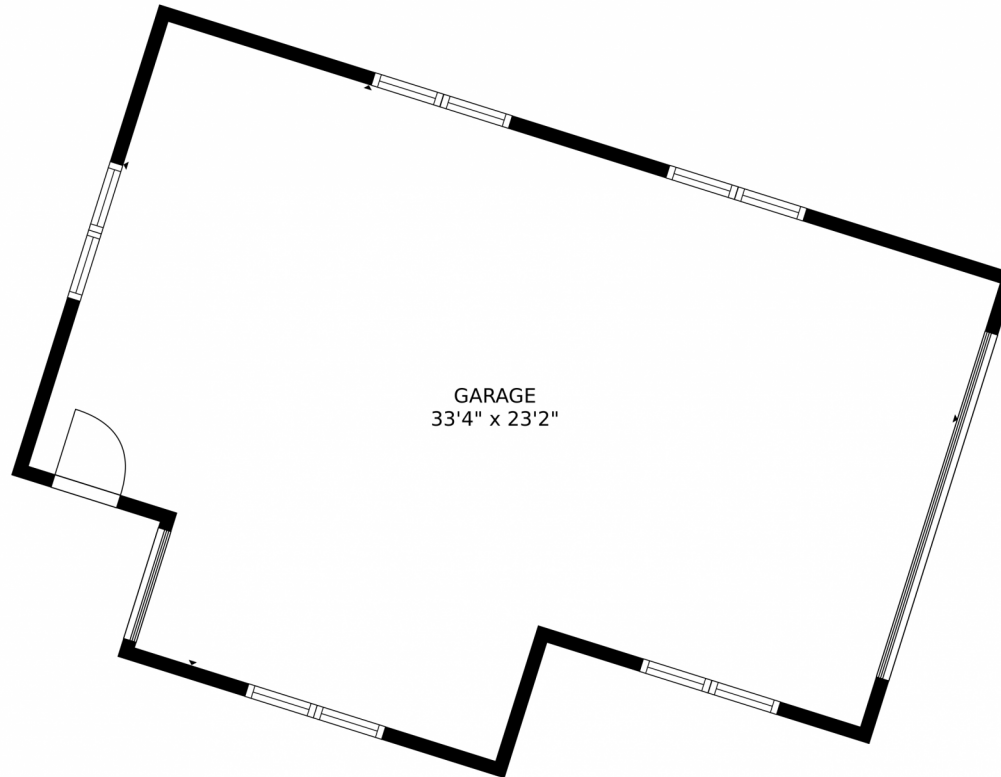
Disclaimer: Sizes and Dimensions are Approximate, Actual May Vary.



Greg Dach
303-525-9006
gregdach@remax.net



4451 Bell Mountain Drive, Castle Rock, CO 80104 – Detached Garage



TOTAL: 4258 sq. ft
Below Ground: 1771 sq. ft, FLOOR 2: 2487 sq. ft, FLOOR 3: 0 sq. ft
EXCLUDED AREAS: STORAGE: 102 sq. ft, BASEMENT: 633 sq. ft, PATIO: 623 sq. ft,
PORCH: 155 sq. ft, BALCONY: 537 sq. ft, GARAGE: 1354 sq. ft,
EMBEDDEDWINDOW: 6 sq. ft

MEASUREMENTS CALCULATED BY V1Photos.com ARE DEEMED HIGHLY RELIABLE BUT NOT GUARANTEED.



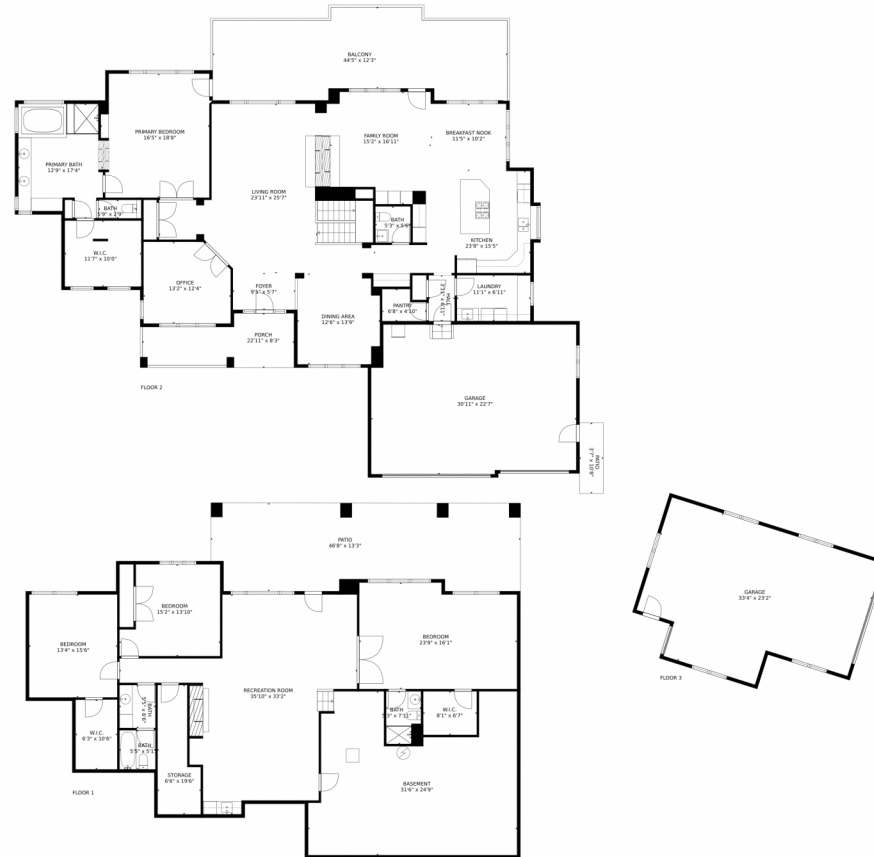
Disclaimer: Sizes and Dimensions are Approximate, Actual May Vary.



Greg Dach
303-525-9006
gregdach@remax.net



4451 Bell Mountain Drive, Castle Rock, CO 80104 – All Levels

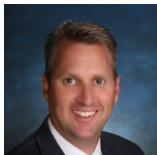


TOTAL: 4258 sq. ft
Below Ground: 1771 sq. ft, FLOOR 2: 2487 sq. ft, FLOOR 3: 0 sq. ft
EXCLUDED AREAS: STORAGE: 102 sq. ft, BASEMENT: 633 sq. ft, PATIO: 623 sq. ft,
PORCH: 155 sq. ft, BALCONY: 537 sq. ft, GARAGE: 1354 sq. ft,
EMBEDDED WINDOW: 6 sq. ft

MEASUREMENTS CALCULATED BY V1Photos.com ARE DEEMED HIGHLY RELIABLE BUT NOT GUARANTEED.



Disclaimer: Sizes and Dimensions are Approximate, Actual May Vary.



Greg Dach
303-525-9006
gregdach@remax.net



Scan code
for more
property
details

