

Single Family

1703 SQFT

4 Beds

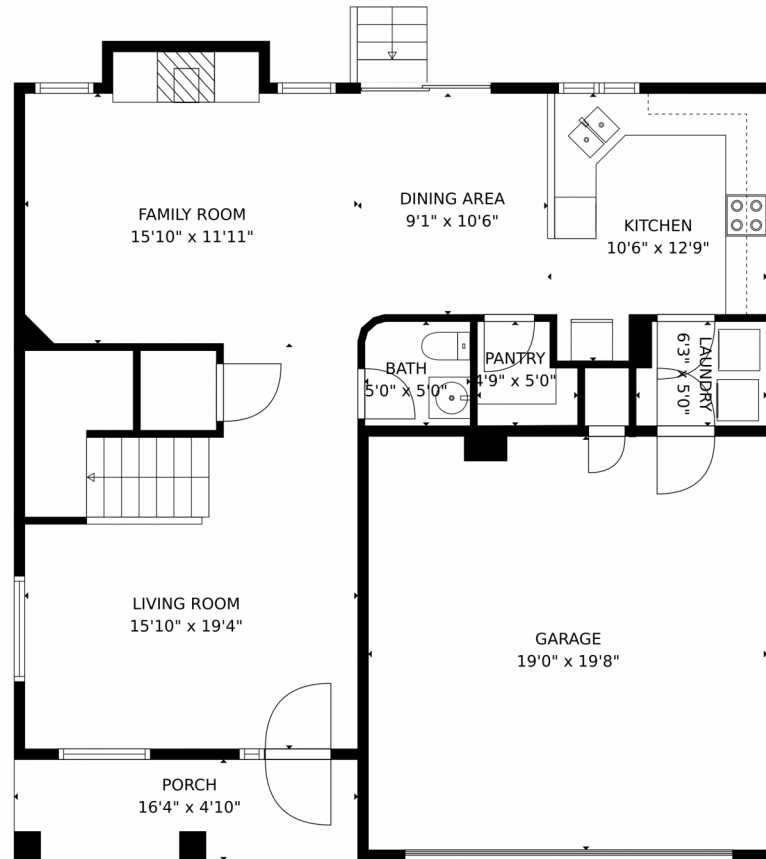
2/1 Baths



Taylor Haas
 303-665-7368
 taylorh@coloradorpm.com
<https://www.coloradorpm.com/available-rental-properties-denver>



3310 Pampas Court, Colorado Springs, CO 80910 – Main Level



TOTAL: 1783 sq. ft
FLOOR 1: 809 sq. ft, FLOOR 2: 974 sq. ft
EXCLUDED AREAS: PORCH: 79 sq. ft, GARAGE: 380 sq. ft, OPEN TO BELOW: 202 sq. ft
MEASUREMENTS CALCULATED BY V1Photos.COM ARE DEEMED HIGHLY RELIABLE BUT NOT GUARANTEED.



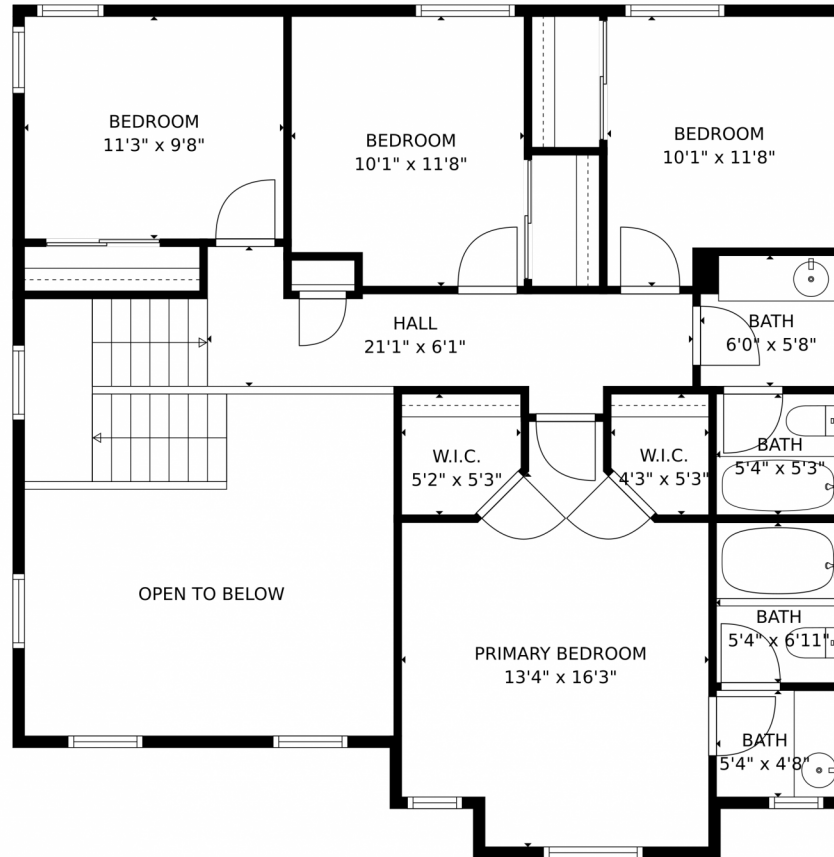
Disclaimer: Sizes and Dimensions are Approximate, Actual May Vary.



Taylor Haas
303-665-7368
taylorh@coloradorpm.com
<https://www.coloradorpm.com/available-rental-properties-denver>



3310 Pampas Court, Colorado Springs, CO 80910 – Upper Level



TOTAL: 1783 sq. ft
FLOOR 1: 809 sq. ft, FLOOR 2: 974 sq. ft
EXCLUDED AREAS: PORCH: 79 sq. ft, GARAGE: 380 sq. ft, OPEN TO BELOW: 202 sq. ft
MEASUREMENTS CALCULATED BY V1Photos.com ARE DEEMED HIGHLY RELIABLE BUT NOT GUARANTEED.



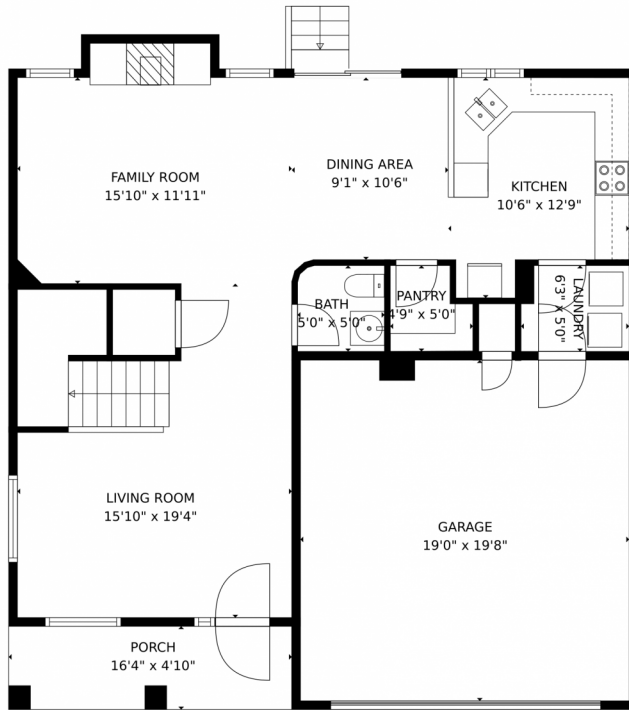
Disclaimer: Sizes and Dimensions are Approximate, Actual May Vary.



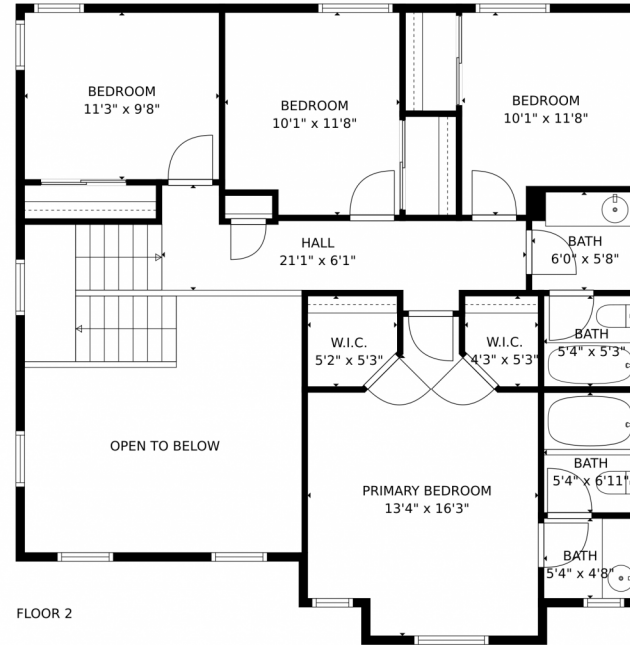
Taylor Haas
303-665-7368
taylorh@coloradorpm.com
<https://www.coloradorpm.com/available-rental-properties-denver>



3310 Pampas Court, Colorado Springs, CO 80910 – All Levels



FLOOR 1



FLOOR 2

TOTAL: 1783 sq. ft
FLOOR 1: 809 sq. ft, FLOOR 2: 974 sq. ft
EXCLUDED AREAS: PORCH: 79 sq. ft, GARAGE: 380 sq. ft, OPEN TO BELOW: 202 sq. ft
MEASUREMENTS CALCULATED BY V1Photos.COM ARE DEEMED HIGHLY RELIABLE BUT NOT GUARANTEED.



Disclaimer: Sizes and Dimensions are Approximate, Actual May Vary.



Taylor Haas
303-665-7368
taylorh@coloradorpm.com
<https://www.coloradorpm.com/available-rental-properties-denver>



Scan code
for more
property
details

