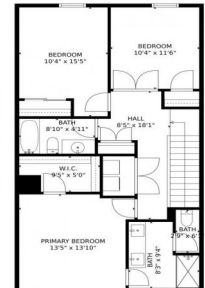






15552 West Washburn Circle, Denver, CO 80228 - Second Level



 Townhouse

 2000 SQFT

 3 Beds

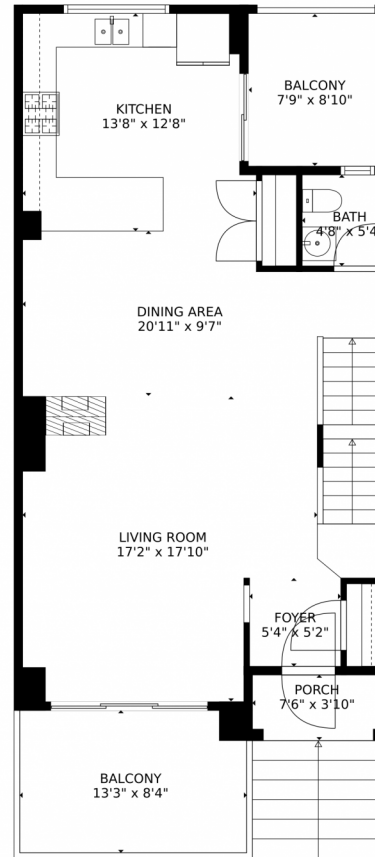
 2/1 Baths



Taylor Haas
 303-665-7368
 taylorh@coloradorpm.com
<https://www.coloradorpm.com/available-rental-properties-denv>



15552 West Washburn Circle, Denver, CO 80228 – Main Level



TOTAL: 1846 sq. ft
Below Ground: 262 sq. ft, FLOOR 2: 747 sq. ft, FLOOR 3: 837 sq. ft
EXCLUDED AREAS: GARAGE: 434 sq. ft, ELECTRICAL ROOM: 73 sq. ft, BALCONY: 179 sq. ft,
PORCH: 29 sq. ft

MEASUREMENTS CALCULATED BY V1Photos.com ARE DEEMED HIGHLY RELIABLE BUT NOT GUARANTEED.



Disclaimer: Sizes and Dimensions are Approximate, Actual May Vary.



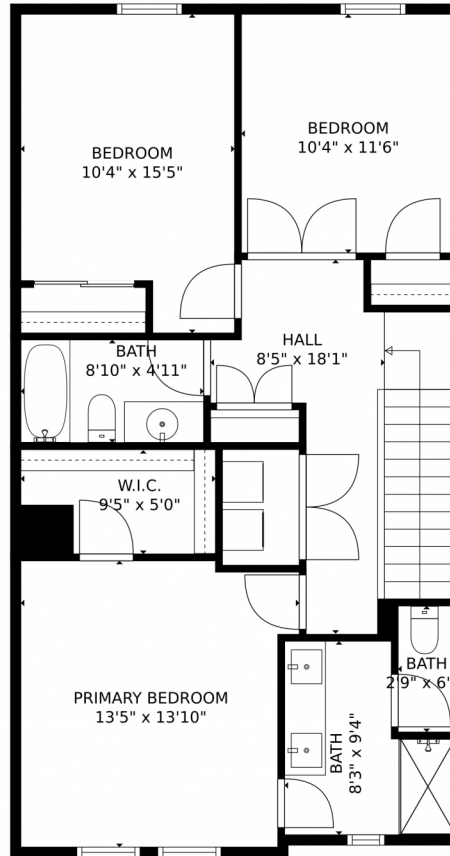
Taylor Haas
303-665-7368
taylorh@coloradorpm.com
<https://www.coloradorpm.com/available-rental-properties-denver>



Scan code
for more
property
details



15552 West Washburn Circle, Denver, CO 80228 – Second Level



TOTAL: 1846 sq. ft
Below Ground: 262 sq. ft, FLOOR 2: 747 sq. ft, FLOOR 3: 837 sq. ft
EXCLUDED AREAS: GARAGE: 434 sq. ft, ELECTRICAL ROOM: 73 sq. ft, BALCONY: 179 sq. ft,
PORCH: 29 sq. ft

MEASUREMENTS CALCULATED BY V1Photos.com ARE DEEMED HIGHLY RELIABLE BUT NOT GUARANTEED.



Disclaimer: Sizes and Dimensions are Approximate, Actual May Vary.



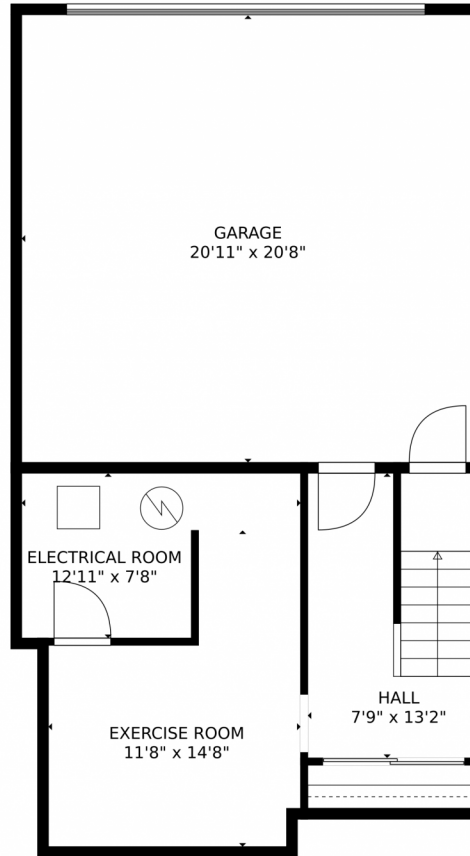
Taylor Haas
303-665-7368
taylorh@coloradorm.com
<https://www.coloradorm.com/available-rental-properties-denver>



Scan code
for more
property
details



15552 West Washburn Circle, Denver, CO 80228 – Lower Level



TOTAL: 1846 sq. ft
Below Ground: 262 sq. ft, FLOOR 2: 747 sq. ft, FLOOR 3: 837 sq. ft
EXCLUDED AREAS: GARAGE: 434 sq. ft, ELECTRICAL ROOM: 73 sq. ft, BALCONY: 179 sq. ft,
PORCH: 29 sq. ft

MEASUREMENTS CALCULATED BY V1Photos.com ARE DEEMED HIGHLY RELIABLE BUT NOT GUARANTEED.



Disclaimer: Sizes and Dimensions are Approximate, Actual May Vary.



Taylor Haas

303-665-7368

taylorh@coloradorpm.com

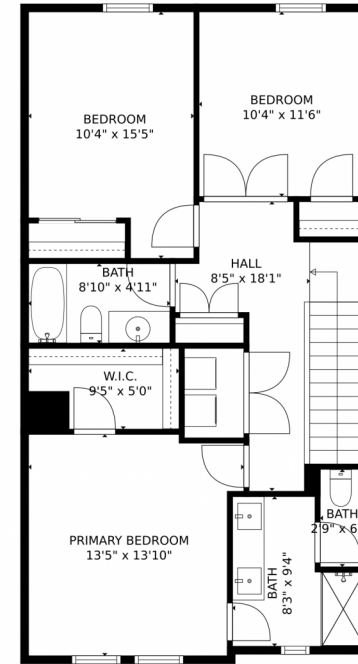
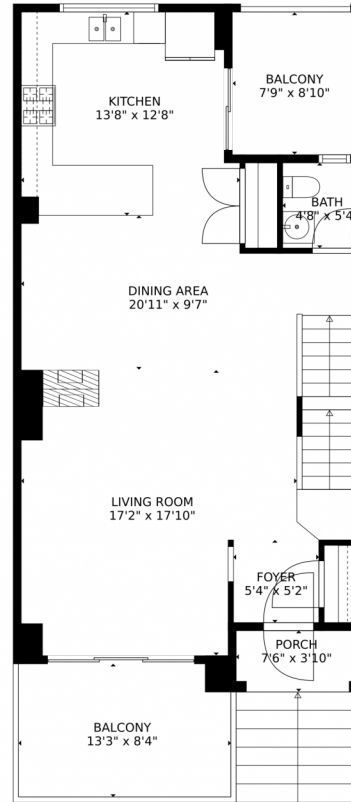
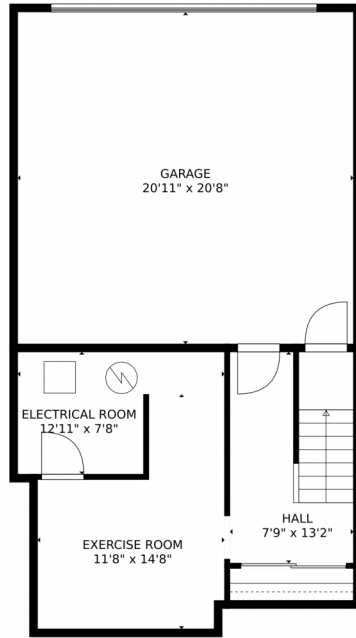
<https://www.coloradorpm.com/available-rental-properties-denver>



Scan code
for more
property
details



15552 West Washburn Circle, Denver, CO 80228 – All Levels



TOTAL: 1846 sq. ft

Below Ground: 262 sq. ft, FLOOR 2: 747 sq. ft, FLOOR 3: 837 sq. ft
EXCLUDED AREAS: GARAGE: 434 sq. ft, ELECTRICAL ROOM: 73 sq. ft, BALCONY: 179 sq. ft,
PORCH: 29 sq. ft

MEASUREMENTS CALCULATED BY V1Photos.COM ARE DEEMED HIGHLY RELIABLE BUT NOT GUARANTEED.



Disclaimer: Sizes and Dimensions are Approximate, Actual May Vary.



Taylor Haas

303-665-7368

taylorh@coloradorpm.com

<https://www.coloradorpm.com/available-rental-properties-denver>



Scan code
for more
property
details

