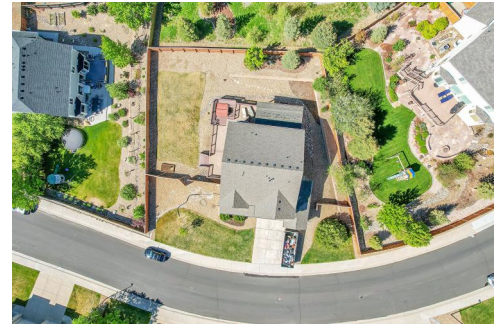









16599 Hitching Post Circle
 Parker, CO 80134
 COMMUNITY: Bradbury Ranch



-  Single Family
-  3250 SQFT
-  4 Beds
-  3/1 Baths
-  3 Car
-  0.34 Acre

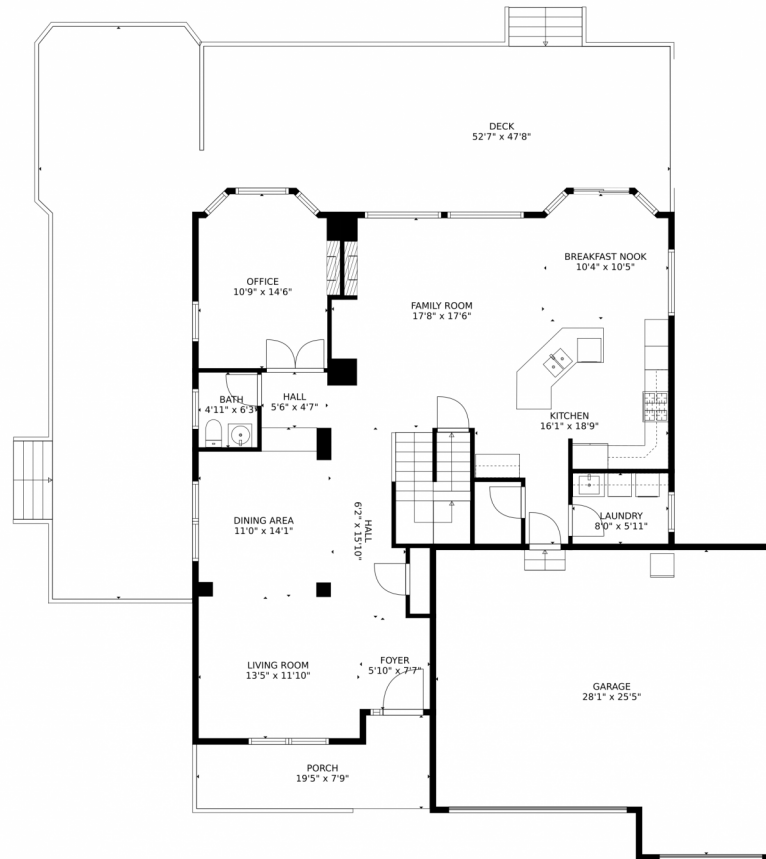
Brenda K Meyer
 720-331-9291
 brenda@exitrealtydtc.com
<https://brendasellscolorado.com/>

Scan code for more property details





16599 Hitching Post Circle, Parker, CO 80134 – main level



TOTAL: 3086 sq. ft
Below Ground: 0 sq. ft, FLOOR 2: 1392 sq. ft, FLOOR 3: 1694 sq. ft
EXCLUDED AREAS: BASEMENT: 1155 sq. ft, ELECTRICAL ROOM: 208 sq. ft, GARAGE: 644 sq. ft,
PORCH: 117 sq. ft, DECK: 1090 sq. ft, OPEN TO BELOW: 43 sq. ft

MEASUREMENTS CALCULATED BY V1Photos.com ARE DEEMED HIGHLY RELIABLE BUT NOT GUARANTEED.

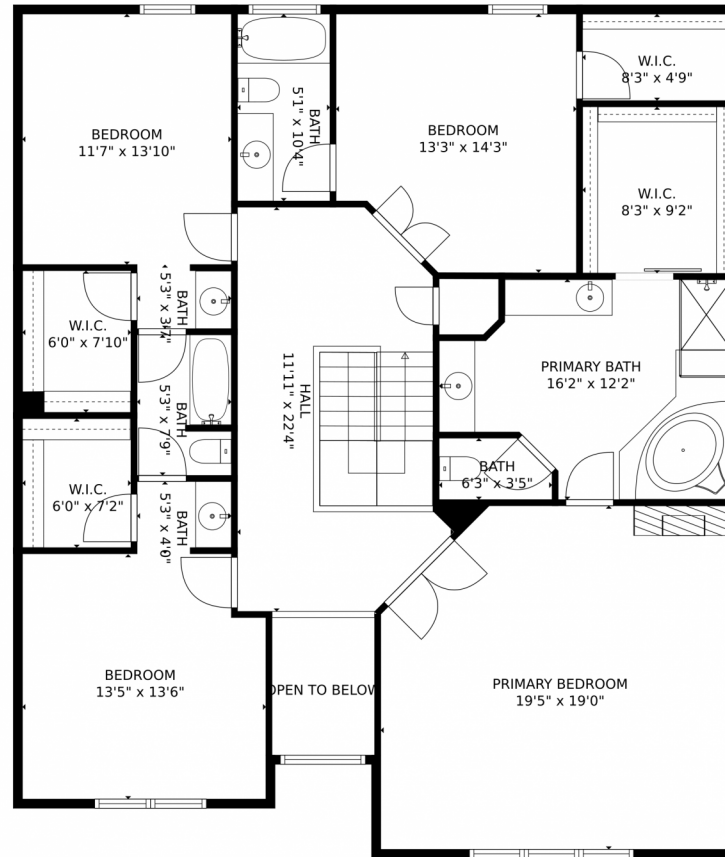


Disclaimer: Sizes and Dimensions are Approximate, Actual May Vary.

Brenda K Meyer
720-331-9291
brenda@exitrealtydtc.com
<https://brendasellscolorado.com/>



16599 Hitching Post Circle, Parker, CO 80134 – upper level



TOTAL: 3086 sq. ft
Below Ground: 0 sq. ft, FLOOR 2: 1392 sq. ft, FLOOR 3: 1694 sq. ft
EXCLUDED AREAS: BASEMENT: 1155 sq. ft, ELECTRICAL ROOM: 208 sq. ft, GARAGE: 644 sq. ft,
PORCH: 117 sq. ft, DECK: 1090 sq. ft, OPEN TO BELOW: 43 sq. ft

MEASUREMENTS CALCULATED BY V1Photos.com ARE DEEMED HIGHLY RELIABLE BUT NOT GUARANTEED.

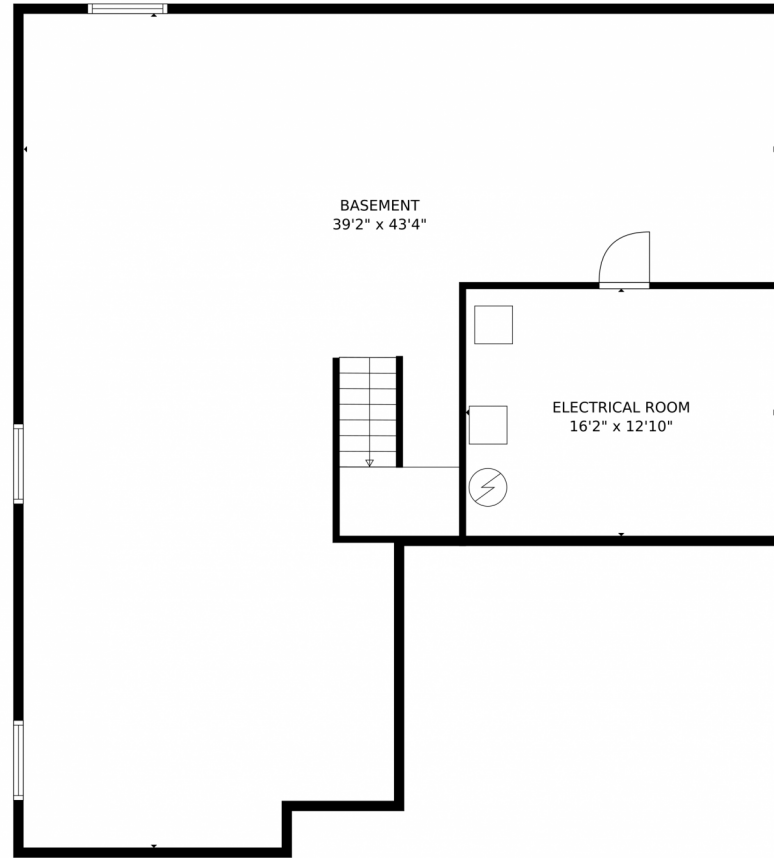
Disclaimer: Sizes and Dimensions are Approximate, Actual May Vary.

Brenda K Meyer
720-331-9291
brenda@exitrealtydtc.com
<https://brendasellscolorado.com/>



Scan code
for more
property
details

16599 Hitching Post Circle, Parker, CO 80134 – lower level



TOTAL: 3086 sq. ft
Below Ground: 0 sq. ft, FLOOR 2: 1392 sq. ft, FLOOR 3: 1694 sq. ft
EXCLUDED AREAS: BASEMENT: 1155 sq. ft, ELECTRICAL ROOM: 208 sq. ft, GARAGE: 644 sq. ft,
PORCH: 117 sq. ft, DECK: 1090 sq. ft, OPEN TO BELOW: 43 sq. ft
MEASUREMENTS CALCULATED BY V1Photos.COM ARE DEEMED HIGHLY RELIABLE BUT NOT GUARANTEED.



Disclaimer: Sizes and Dimensions are Approximate, Actual May Vary.

Brenda K Meyer
720-331-9291
brenda@exitrealtydtc.com
<https://brendasellscolorado.com/>



16599 Hitching Post Circle, Parker, CO 80134 – all levels



TOTAL: 3086 sq. ft
Below Ground: 0 sq. ft, FLOOR 2: 1392 sq. ft, FLOOR 3: 1694 sq. ft
EXCLUDED AREAS: BASEMENT: 1155 sq. ft, ELECTRICAL ROOM: 208 sq. ft, GARAGE: 644 sq. ft,
PORCH: 117 sq. ft, DECK: 1090 sq. ft, OPEN TO BELOW: 43 sq. ft

MEASUREMENTS CALCULATED BY V1Photos.COM ARE DEEMED HIGHLY RELIABLE BUT NOT GUARANTEED.



Disclaimer: Sizes and Dimensions are Approximate, Actual May Vary.

Brenda K Meyer
720-331-9291
brenda@exitrealtydtc.com
<https://brendasellscolorado.com/>



Scan code
for more
property
details

