



3311 Springmeadow Circle  
 Castle Rock, CO 80109  
 COMMUNITY: The Meadows

MLS # 9428257  
 PRICE \$799,000



Single Family 4331 SQFT 5 Beds 4 Baths 2 Car 0.18 Acre

## PROPERTY DETAILS

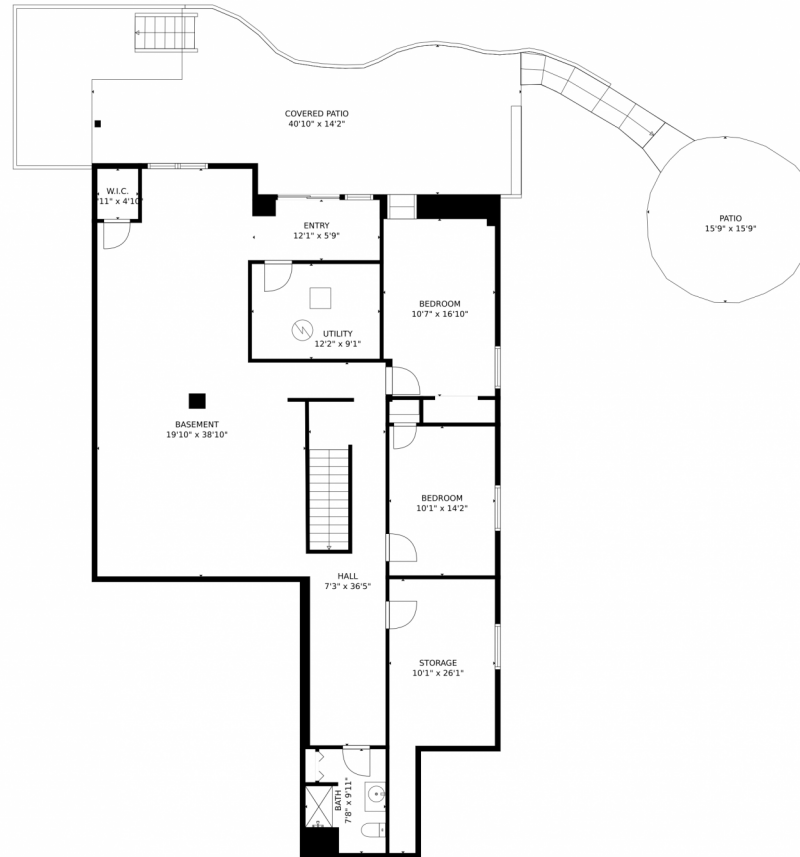
Don't miss this entertainer's paradise with remodeled Chef's kitchen & multiple outdoor spaces. This 5 bedroom, 4 bath home offers custom features. Charming front porch, tile floors & vaulted ceilings. Office with built-ins. Kitchen with large granite island, Induction cooktop, custom refrigerator, 2 dishwashers, warming drawer, and walk-in pantry. Great room opens onto expansive deck. Main floor primary suite with custom walk-in closet & 5 piece master bath. Upstairs bedroom with remodeled ensuite bathroom. Basement with 2 bedrooms, large family room, 3/4 bathroom, storage space & walk-out access to patio. Beautiful perennial garden and outdoor living spaces. Fruit trees, grape vines, and vast gardens. Set your showing today!



**Milissa Everly**  
 303-915-3434  
 milissa@homesbyshift.com



# 3311 Springmeadow Circle, Castle Rock, CO 80109 — Lower Level



**TOTAL: 3772 sq. ft**  
Below Ground: 1567 sq. ft, FLOOR 2: 1895 sq. ft, FLOOR 3: 310 sq. ft  
EXCLUDED AREAS: STORAGE: 185 sq. ft, W.I.C.: 19 sq. ft, PATIO: 251 sq. ft,  
COVERED PATIO: 501 sq. ft, GARAGE: 369 sq. ft, PORCH: 105 sq. ft,  
DECK: 371 sq. ft

MEASUREMENTS CALCULATED BY V1Photos.com ARE DEEMED HIGHLY RELIABLE BUT NOT GUARANTEED.



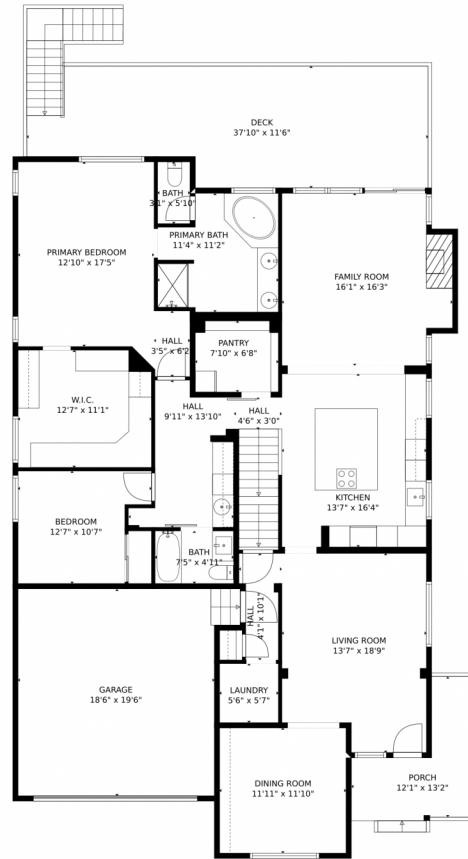
Disclaimer: Sizes and Dimensions are Approximate, Actual May Vary.



**Milissa Everly**  
303-915-3434  
milissa@homesbyshift.com



# 3311 Springmeadow Circle, Castle Rock, CO 80109 – Main Level



**TOTAL: 3772 sq. ft**

Below Ground: 1567 sq. ft, FLOOR 2: 1895 sq. ft, FLOOR 3: 310 sq. ft  
EXCLUDED AREAS: STORAGE: 185 sq. ft, W.I.C.: 19 sq. ft, PATIO: 251 sq. ft,  
COVERED PATIO: 501 sq. ft, GARAGE: 369 sq. ft, PORCH: 105 sq. ft,  
DECK: 371 sq. ft

MEASUREMENTS CALCULATED BY V1Photos.com ARE DEEMED HIGHLY RELIABLE BUT NOT GUARANTEED.



Disclaimer: Sizes and Dimensions are Approximate, Actual May Vary.



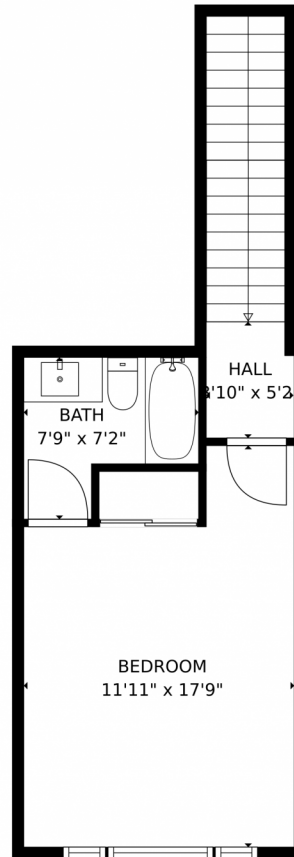
**Milissa Everly**  
303-915-3434  
milissa@homesbyshift.com



Scan code  
for more  
property  
details



3311 Springmeadow Circle, Castle Rock, CO 80109 — Upper Level



**TOTAL: 3772 sq. ft**  
Below Ground: 1567 sq. ft, FLOOR 2: 1895 sq. ft, FLOOR 3: 310 sq. ft  
EXCLUDED AREAS: STORAGE: 185 sq. ft, W.I.C.: 19 sq. ft, PATIO: 251 sq. ft,  
COVERED PATIO: 501 sq. ft, GARAGE: 369 sq. ft, PORCH: 105 sq. ft,  
DECK: 371 sq. ft  
MEASUREMENTS CALCULATED BY V1Photos.com ARE DEEMED HIGHLY RELIABLE BUT NOT GUARANTEED.



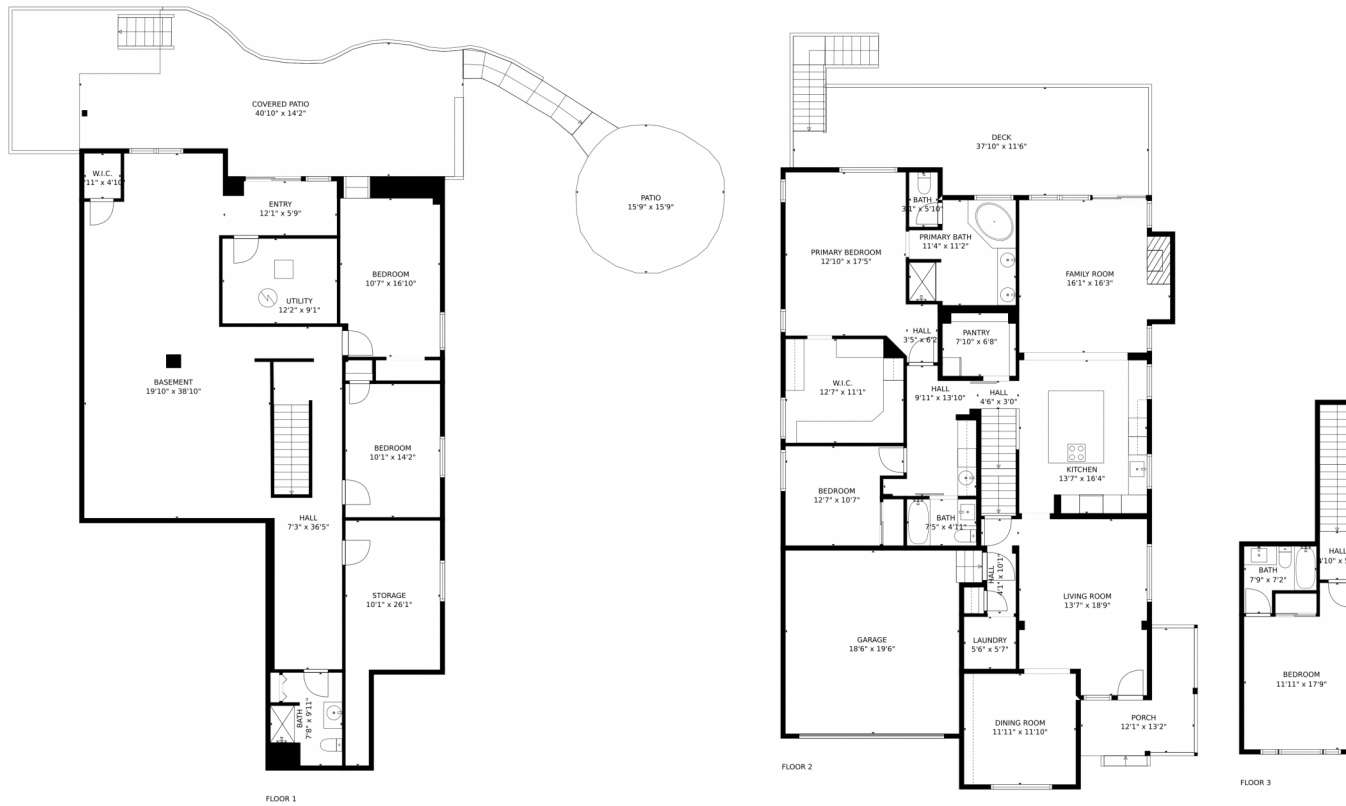
Disclaimer: Sizes and Dimensions are Approximate, Actual May Vary.



**Milissa Everly**  
303-915-3434  
milissa@homesbyshift.com



# 3311 Springmeadow Circle, Castle Rock, CO 80109 – All Levels



**TOTAL: 3772 sq. ft**  
 Below Ground: 1567 sq. ft, FLOOR 2: 1895 sq. ft, FLOOR 3: 310 sq. ft  
 EXCLUDED AREAS: STORAGE: 185 sq. ft, W.I.C.: 19 sq. ft, PATIO: 251 sq. ft,  
 COVERED PATIO: 501 sq. ft, GARAGE: 369 sq. ft, PORCH: 105 sq. ft,  
 DECK: 371 sq. ft

MEASUREMENTS CALCULATED BY V1Photos.com ARE DEEMED HIGHLY RELIABLE BUT NOT GUARANTEED.



Disclaimer: Sizes and Dimensions are Approximate, Actual May Vary.



**Milissa Everly**  
 303-915-3434  
 milissa@homesbyshift.com



Scan code  
 for more  
 property  
 details

