



16003 East 106th Court
Commerce City, CO 80022

MLS # 9636965
PRICE \$549,900



Single Family 1818 SQFT 3 Beds 2/1 Baths 2 Car 0.15 Acre

PROPERTY DETAILS

Welcome to this charming craftsman-style house with 3 bedrooms and 2.5 bathrooms. Located on a corner lot in a cul de sac, this property is perfect for a family. The living room has high vaulted ceilings, LVP floors, and a ceiling fan. The great room has a gas fireplace. The eat-in kitchen has stainless steel appliances and quartz countertops. The primary bedroom has plush carpeting and an ensuite bathroom. Step outside to the low maintenance composite deck and enjoy the spacious yard. This home features newer windows and lots of storage. Located in a friendly community with nearby parks and amenities. Don't miss out on this dream home!

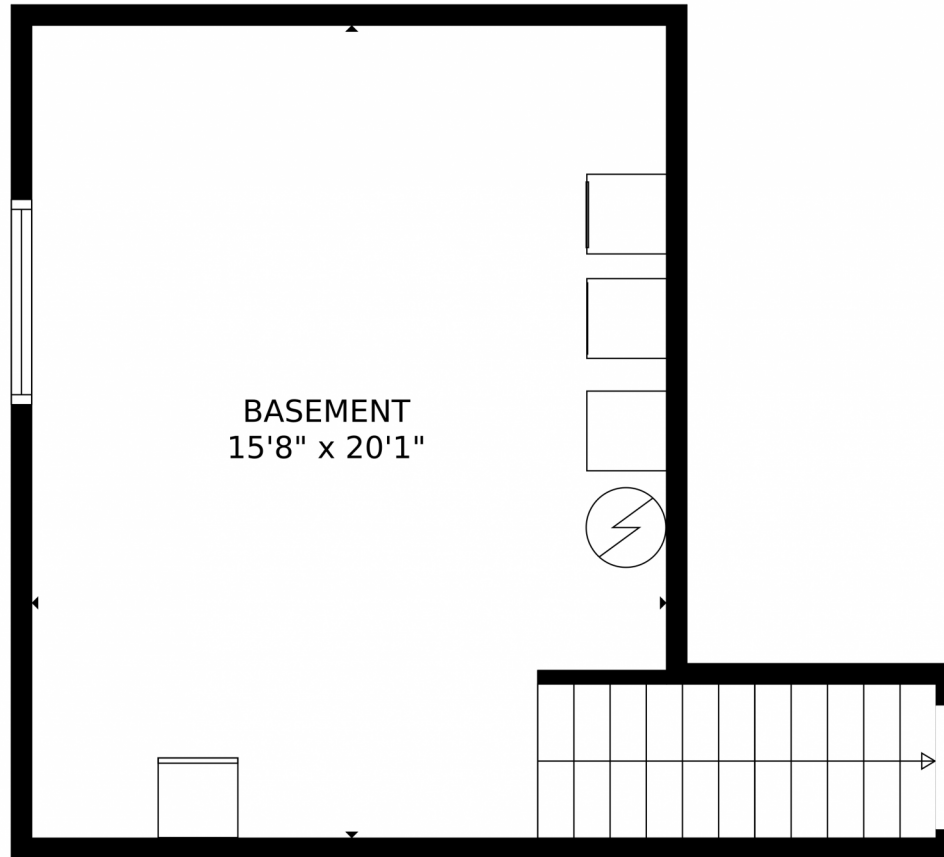


Chad Swenson
303-829-9818
swensonrealestate@comcast.net



Scan code
for more
property
details





TOTAL: 1474 sq. ft
Below Ground: 0 sq. ft, FLOOR 2: 676 sq. ft, FLOOR 3: 798 sq. ft
EXCLUDED AREAS: BASEMENT: 340 sq. ft, GARAGE: 411 sq. ft, LOW CEILING: 330 sq. ft,
DECK: 442 sq. ft, PORCH: 81 sq. ft

MEASUREMENTS CALCULATED BY V1Photos.com ARE DEEMED HIGHLY RELIABLE BUT NOT GUARANTEED.



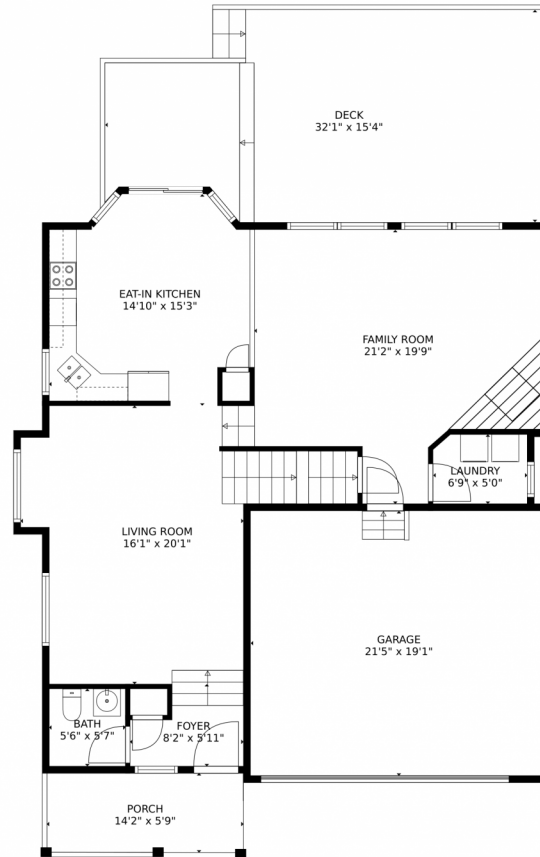
Disclaimer: Sizes and Dimensions are Approximate, Actual May Vary.



Chad Swenson
303-829-9818
swensonrealestate@comcast.net



16003 East 106th Court, Commerce City, CO 80022 — Main Level



TOTAL: 1474 sq. ft
Below Ground: 0 sq. ft, FLOOR 2: 676 sq. ft, FLOOR 3: 798 sq. ft
EXCLUDED AREAS: BASEMENT: 340 sq. ft, GARAGE: 411 sq. ft, LOW CEILING: 330 sq. ft,
DECK: 442 sq. ft, PORCH: 81 sq. ft

MEASUREMENTS CALCULATED BY V1Photos.com ARE DEEMED HIGHLY RELIABLE BUT NOT GUARANTEED.



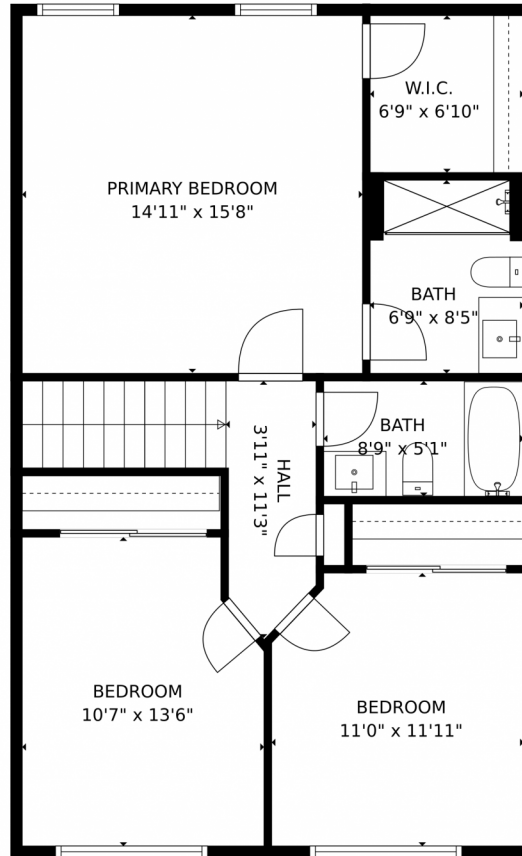
Disclaimer: Sizes and Dimensions are Approximate, Actual May Vary.



Chad Swenson
303-829-9818
swensonrealestate@comcast.net



16003 East 106th Court, Commerce City, CO 80022 – Upper Level



TOTAL: 1474 sq. ft
Below Ground: 0 sq. ft, FLOOR 2: 676 sq. ft, FLOOR 3: 798 sq. ft
EXCLUDED AREAS: BASEMENT: 340 sq. ft, GARAGE: 411 sq. ft, LOW CEILING: 330 sq. ft,
DECK: 442 sq. ft, PORCH: 81 sq. ft
MEASUREMENTS CALCULATED BY V1Photos.com ARE DEEMED HIGHLY RELIABLE BUT NOT GUARANTEED.



Disclaimer: Sizes and Dimensions are Approximate, Actual May Vary.



Chad Swenson
303-829-9818
swensonrealestate@comcast.net



16003 East 106th Court, Commerce City, CO 80022 – All Levels



TOTAL: 1474 sq. ft
Below Ground: 0 sq. ft, FLOOR 2: 676 sq. ft, FLOOR 3: 798 sq. ft
EXCLUDED AREAS: BASEMENT: 340 sq. ft, GARAGE: 411 sq. ft, LOW CEILING: 330 sq. ft,
DECK: 442 sq. ft, PORCH: 81 sq. ft

MEASUREMENTS CALCULATED BY V1Photos.com ARE DEEMED HIGHLY RELIABLE BUT NOT GUARANTEED.



Disclaimer: Sizes and Dimensions are Approximate, Actual May Vary.



Chad Swenson
303-829-9818
swensonrealestate@comcast.net

