

Single Family



1288 SQFT



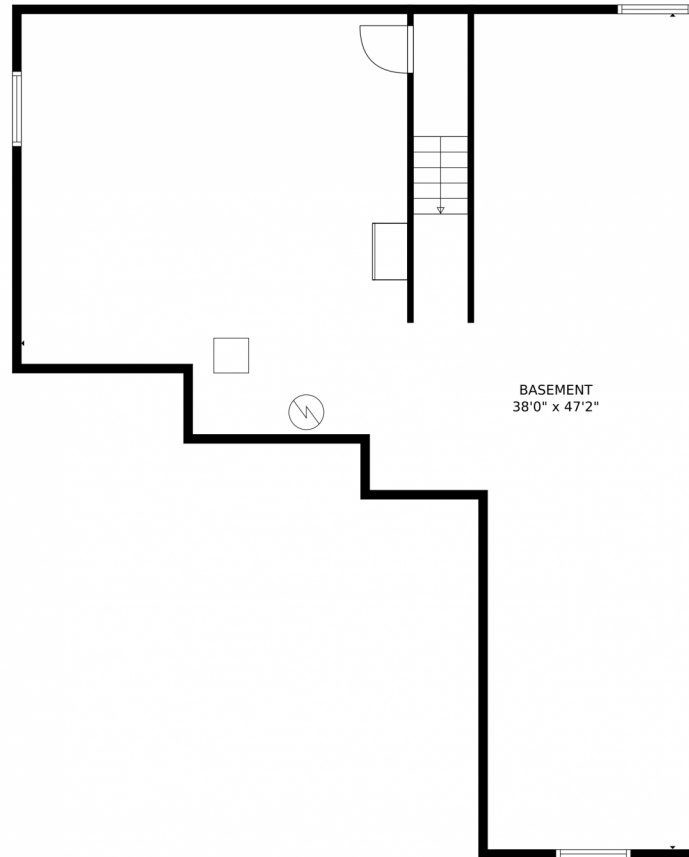
Angie Clauser
970-590-9860
angieclauser@windermere.com



Scan code
for more
property
details



10218 19th Street Road, Greeley, CO 80634 – Basement



TOTAL: 1334 sq. ft
Below Ground: 0 sq. ft, FLOOR 2: 1334 sq. ft
EXCLUDED AREAS: BASEMENT: 1160 sq. ft, GARAGE: 396 sq. ft, PORCH: 106 sq. ft,
DECK: 130 sq. ft

MEASUREMENTS CALCULATED BY V1Photos.com ARE DEEMED HIGHLY RELIABLE BUT NOT GUARANTEED.



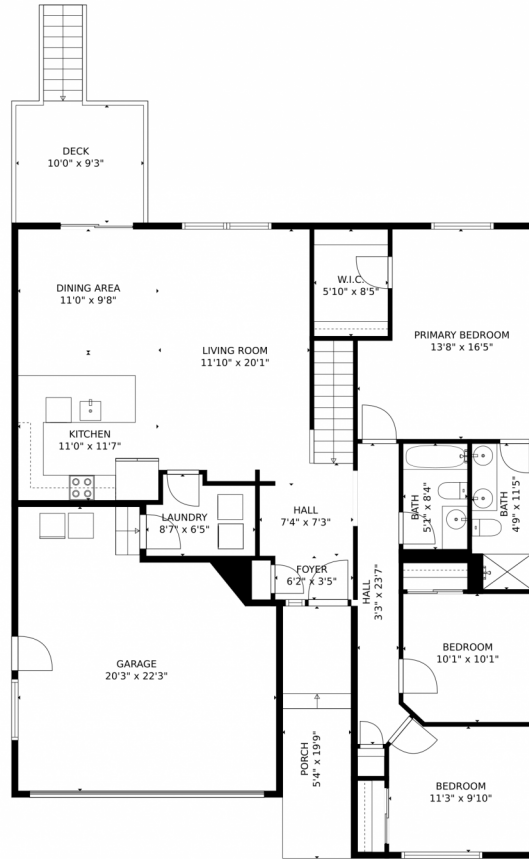
Disclaimer: Sizes and Dimensions are Approximate, Actual May Vary.



Angie Clauser
970-590-9860
angieclauser@windermere.com



10218 19th Street Road, Greeley, CO 80634 – Main Level



TOTAL: 1334 sq. ft
Below Ground: 0 sq. ft, FLOOR 2: 1334 sq. ft
EXCLUDED AREAS: BASEMENT: 1160 sq. ft, GARAGE: 396 sq. ft, PORCH: 106 sq. ft,
DECK: 130 sq. ft

MEASUREMENTS CALCULATED BY V1Photos.com ARE DEEMED HIGHLY RELIABLE BUT NOT GUARANTEED.



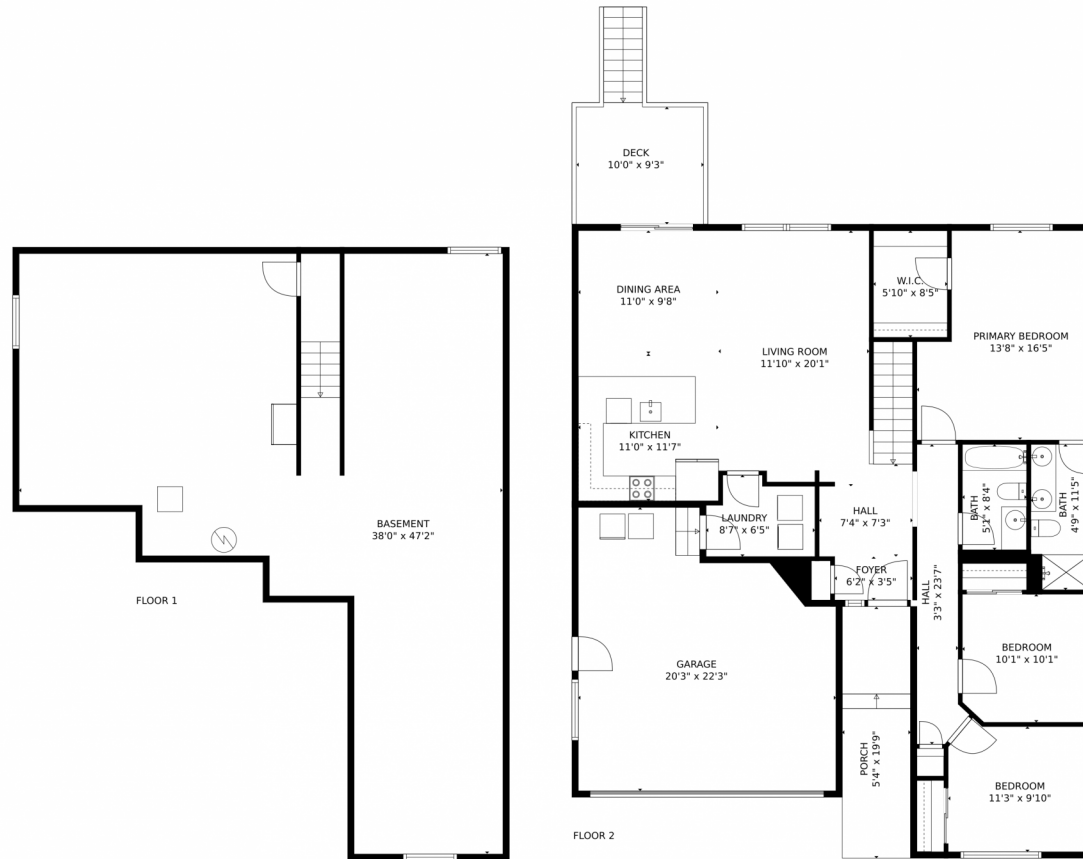
Disclaimer: Sizes and Dimensions are Approximate, Actual May Vary.



Angie Clauser
970-590-9860
angieclauser@windermere.com



10218 19th Street Road, Greeley, CO 80634 – All Levels



TOTAL: 1334 sq. ft
Below Ground: 0 sq. ft, FLOOR 2: 1334 sq. ft
EXCLUDED AREAS: BASEMENT: 1160 sq. ft, GARAGE: 396 sq. ft, PORCH: 106 sq. ft,
DECK: 130 sq. ft

MEASUREMENTS CALCULATED BY V1Photos.com ARE DEEMED HIGHLY RELIABLE BUT NOT GUARANTEED.



Disclaimer: Sizes and Dimensions are Approximate, Actual May Vary.



Angie Clauser
970-590-9860
angieclauser@windermere.com



Scan code for more property details

