

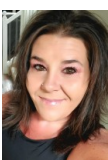
Mountain Escape Close to the City!!



 Single Family
  1167 SQFT
  3 Beds
  1 Baths
  4 Car
  0.91 Acre

PROPERTY DETAILS

Welcome to this stunning mountain retreat with southern exposure! Step inside this modern, open ranch to find a beautiful kitchen with hickory cabinets, stone countertops, and stainless steel appliances. The spacious living room features a wood-burning fireplace, and there is a dining area as well. The main floor also includes a remodeled bathroom, primary and secondary bedrooms, and custom built-ins. The basement offers an additional bedroom and a laundry/utility room with walkout access. Outside, you'll find an entertainer's paradise with a built-in outdoor kitchen, a large covered deck, a concrete patio with views, a firepit, and beautifully landscaped terraced grounds. There is also a heated office/flex space and a 1200+ square foot garage and workshop. Conveniently located near HWY 285 and just 20 minutes to C-470, this is the perfect home for you!



RaNae Rodriguez
303-875-4091
ranae@mscadvisors.com
<http://www.mscadvisors.com>

