


 Single Family

 960 SQFT

 3 Beds

 1 Baths

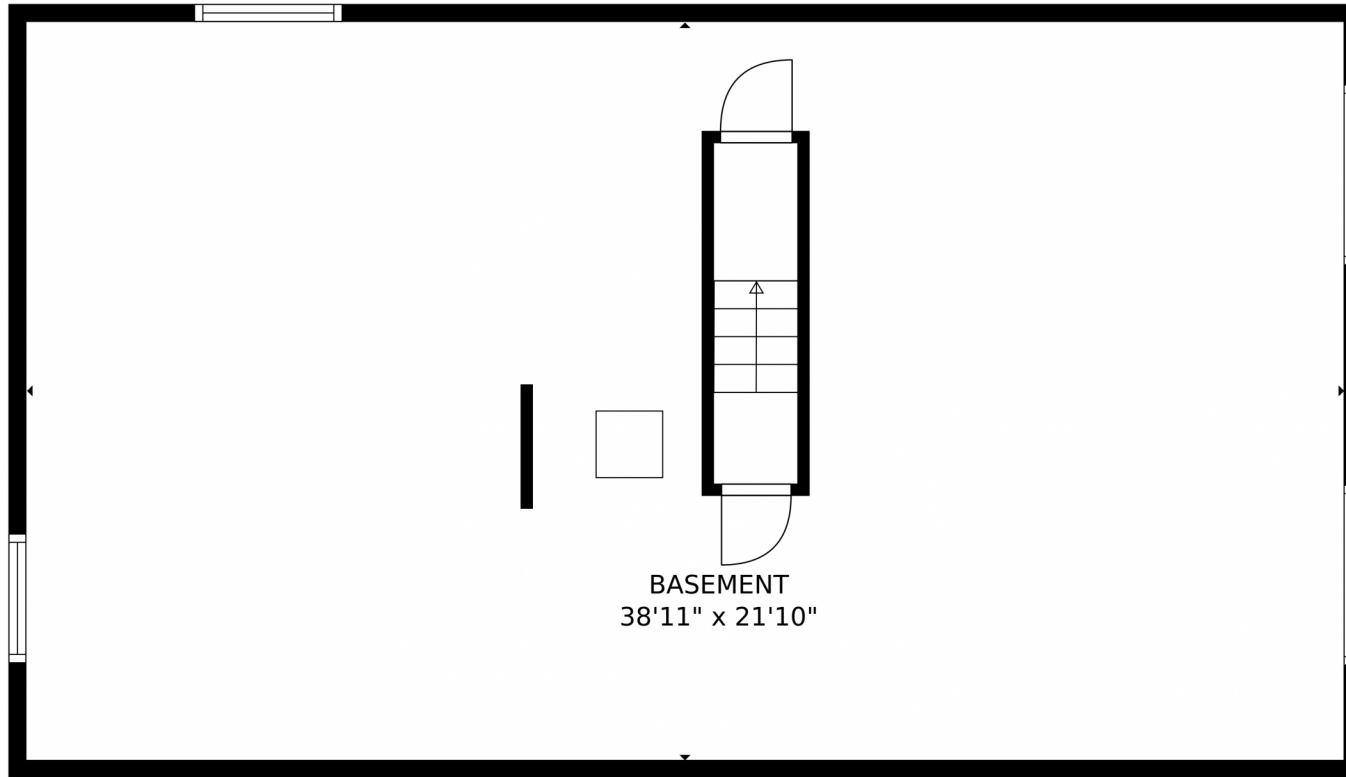


**Taylor Haas**  
 303-665-7368  
 taylorh@coloradorpm.com  
<https://www.coloradorpm.com/available-rental-properties-denver>



Scan code  
 for more  
 property  
 details





BASEMENT  
38'11" x 21'10"

**TOTAL: 1757 sq. ft**  
Below Ground: 852 sq. ft, FLOOR 2: 905 sq. ft  
EXCLUDED AREAS: GARAGE: 280 sq. ft, PORCH: 58 sq. ft, DECK: 55 sq. ft  
MEASUREMENTS CALCULATED BY V1Photos.com ARE DEEMED HIGHLY RELIABLE BUT NOT GUARANTEED.



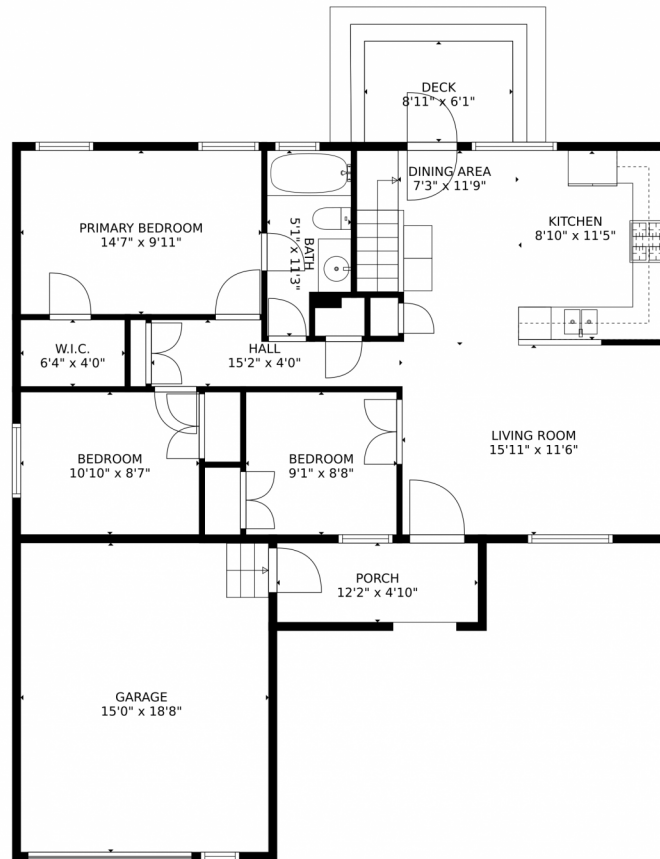
Disclaimer: Sizes and Dimensions are Approximate, Actual May Vary.



**Taylor Haas**  
303-665-7368  
taylorh@coloradorpm.com  
<https://www.coloradorpm.com/available-rental-properties-denver>



# 1560 Bain Drive, Erie, CO 80516 – Main Level



**TOTAL: 1757 sq. ft**  
Below Ground: 852 sq. ft, FLOOR 2: 905 sq. ft  
EXCLUDED AREAS: GARAGE: 280 sq. ft, PORCH: 58 sq. ft, DECK: 55 sq. ft  
MEASUREMENTS CALCULATED BY V1Photos.com ARE DEEMED HIGHLY RELIABLE BUT NOT GUARANTEED.



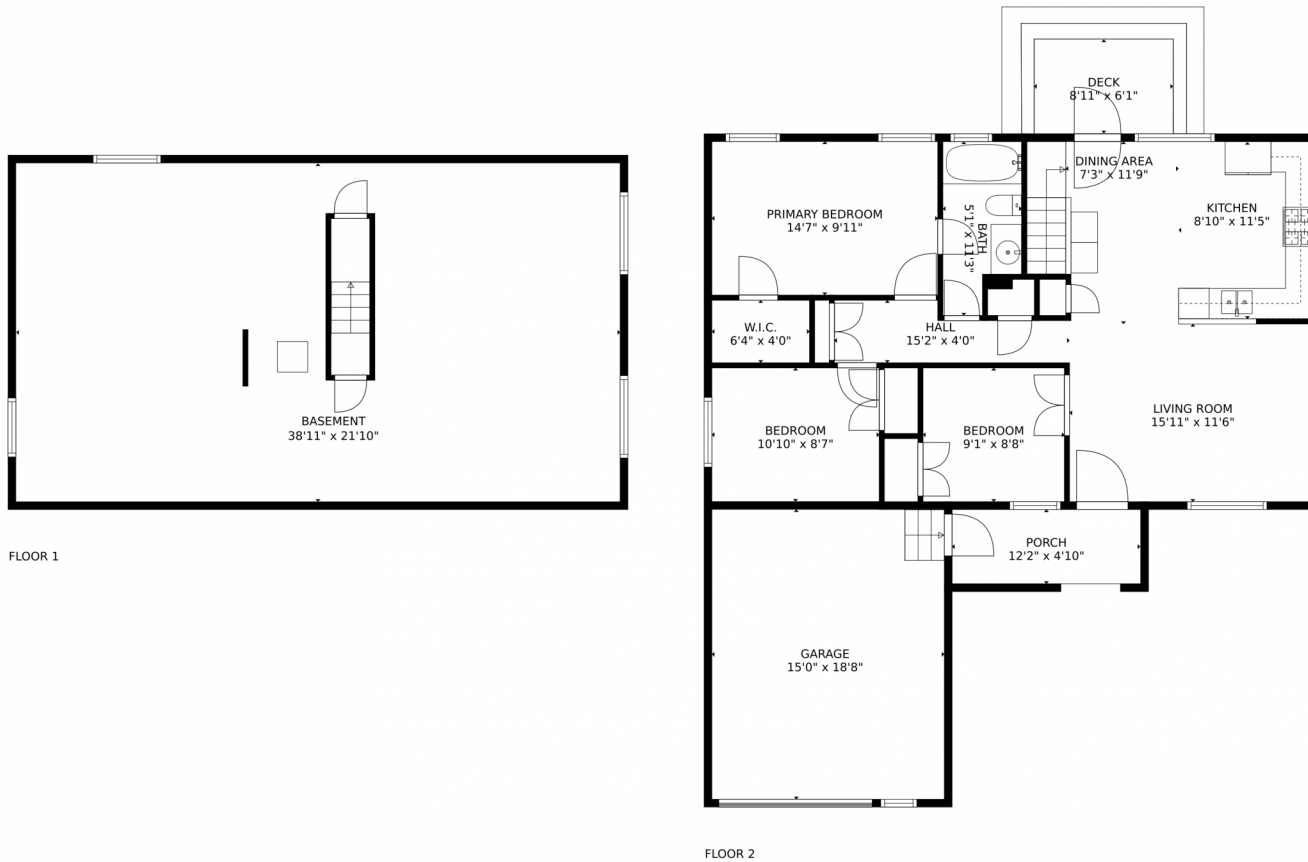
Disclaimer: Sizes and Dimensions are Approximate, Actual May Vary.



**Taylor Haas**  
303-665-7368  
taylorh@coloradorm.com  
<https://www.coloradorm.com/available-rental-properties-denver>



# 1560 Bain Drive, Erie, CO 80516 – All Levels



**TOTAL: 1757 sq. ft**  
Below Ground: 852 sq. ft, FLOOR 2: 905 sq. ft  
EXCLUDED AREAS: GARAGE: 280 sq. ft, PORCH: 58 sq. ft, DECK: 55 sq. ft  
MEASUREMENTS CALCULATED BY V1Photos.com ARE DEEMED HIGHLY RELIABLE BUT NOT GUARANTEED.



Disclaimer: Sizes and Dimensions are Approximate, Actual May Vary.



**Taylor Haas**  
303-665-7368  
taylorh@coloradorpm.com  
<https://www.coloradorpm.com/available-rental-properties-denver>

