



1917 Lydia Drive
 Lafayette, CO 80026
 COMMUNITY: Centaur Village West

MLS
 # IR1011308
 PRICE \$509,950



Condominium



1890 SQFT



3 Beds



2/1 Baths



1 Car

PROPERTY DETAILS

Updated 3-bed, 3-bath townhome in Centaur Village. Move-in ready with new garage door, kitchen remodel, and more. Open floor plan, fireplace, fenced yard, finished basement with laundry and storage. Low maintenance. Attached garage. Close to parks, trails, and Old Town Louisville. Easy access to schools, shopping, and restaurants. Don't miss out!



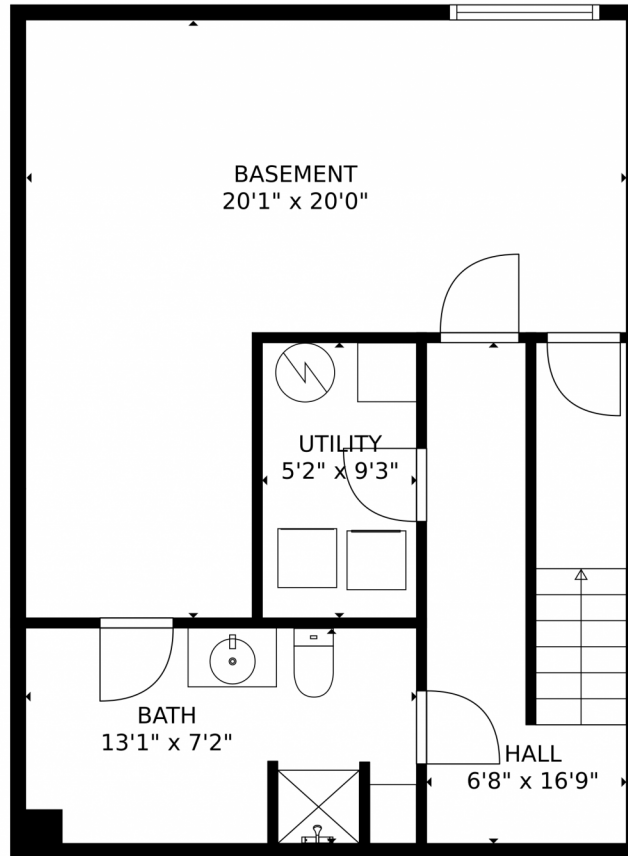
Marla Cody
 303-241-1718
 cody6895@hotmail.com



Scan code
 for more
 property
 details



1917 Lydia Drive, Lafayette, CO 80026 – Lower Level



TOTAL: 1670 sq. ft
Below Ground: 506 sq. ft, FLOOR 2: 582 sq. ft, FLOOR 3: 582 sq. ft
EXCLUDED AREAS: UTILITY: 48 sq. ft, GARAGE: 444 sq. ft, PORCH: 56 sq. ft,
PATIO: 227 sq. ft
MEASUREMENTS CALCULATED BY V1Photos.com ARE DEEMED HIGHLY RELIABLE BUT NOT GUARANTEED.



Disclaimer: Sizes and Dimensions are Approximate, Actual May Vary.



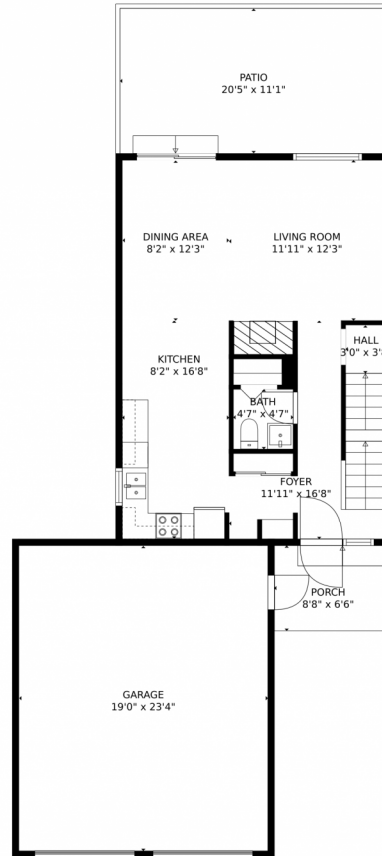
Marla Cody
303-241-1718
cody6895@hotmail.com



Scan code for more property details

A QR code is provided for scanning, with a small smartphone icon to its left. The text 'Scan code for more property details' is positioned above the QR code.

1917 Lydia Drive, Lafayette, CO 80026 – Main Level



TOTAL: 1670 sq. ft
Below Ground: 506 sq. ft, FLOOR 2: 582 sq. ft, FLOOR 3: 582 sq. ft
EXCLUDED AREAS: UTILITY: 48 sq. ft, GARAGE: 444 sq. ft, PORCH: 56 sq. ft,
PATIO: 227 sq. ft

MEASUREMENTS CALCULATED BY V1Photos.com ARE DEEMED HIGHLY RELIABLE BUT NOT GUARANTEED.



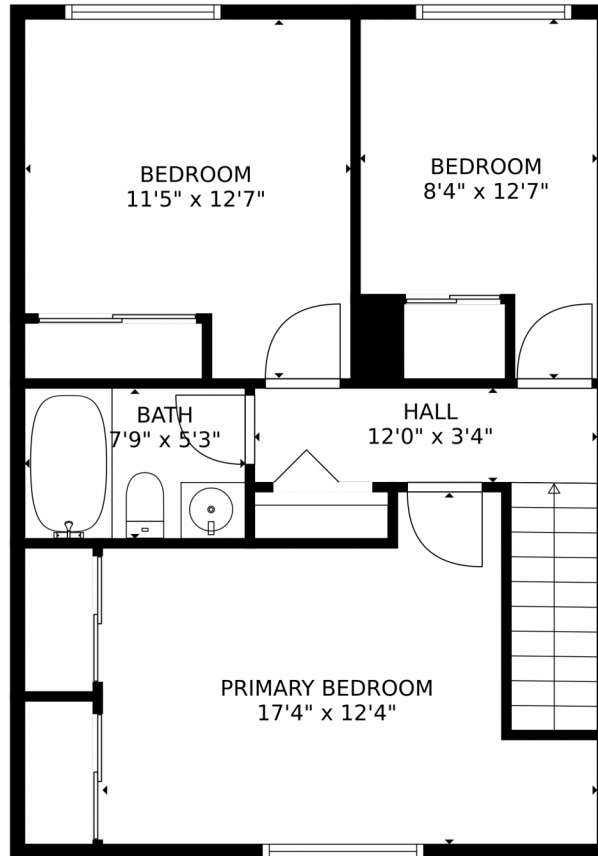
Disclaimer: Sizes and Dimensions are Approximate, Actual May Vary.



Marla Cody
303-241-1718
cody6895@hotmail.com



1917 Lydia Drive, Lafayette, CO 80026 – Upper Levels



TOTAL: 1670 sq. ft
Below Ground: 506 sq. ft, FLOOR 2: 582 sq. ft, FLOOR 3: 582 sq. ft
EXCLUDED AREAS: UTILITY: 48 sq. ft, GARAGE: 444 sq. ft, PORCH: 56 sq. ft,
PATIO: 227 sq. ft
MEASUREMENTS CALCULATED BY V1Photos.com ARE DEEMED HIGHLY RELIABLE BUT NOT GUARANTEED.



Disclaimer: Sizes and Dimensions are Approximate, Actual May Vary.



Marla Cody
303-241-1718
cody6895@hotmail.com



1917 Lydia Drive, Lafayette, CO 80026 – All Levels



TOTAL: 1670 sq. ft

Below Ground: 506 sq. ft, FLOOR 2: 582 sq. ft, FLOOR 3: 582 sq. ft
EXCLUDED AREAS: UTILITY: 48 sq. ft, GARAGE: 444 sq. ft, PORCH: 56 sq. ft,
PATIO: 227 sq. ft

MEASUREMENTS CALCULATED BY V1Photos.com ARE DEEMED HIGHLY RELIABLE BUT NOT GUARANTEED.

Disclaimer: Sizes and Dimensions are Approximate, Actual May Vary.



Marla Cody
303-241-1718
cody6895@hotmail.com

