



Vacant Land



480 SQFT



2 Beds



1 Baths



26 Acre

## PROPERTY DETAILS

Escape to this secluded, 25.58-acre wooded retreat. A waterfront area perfect for camping, fishing, or splashing around greets you. To the right of the gated entrance is an oasis spacious enough to accommodate at least two large RVs. Follow the driveway to the left, which leads to the cabin and potential build sites. Perched atop the highest peak is a rustic, beautifully restored, fully-furnished cabin. This cozy sanctuary features two bedrooms, a living room with additional sleeping space, and a kitchen equipped with all necessary appliances. The property offers two creeks onsite, private trails, and is just a short drive from various towns. Zoned A-1, this property expands your options. No HOA.



Jane Pearson

720-926-8174

[jane@1percentlists.com](mailto:jane@1percentlists.com)

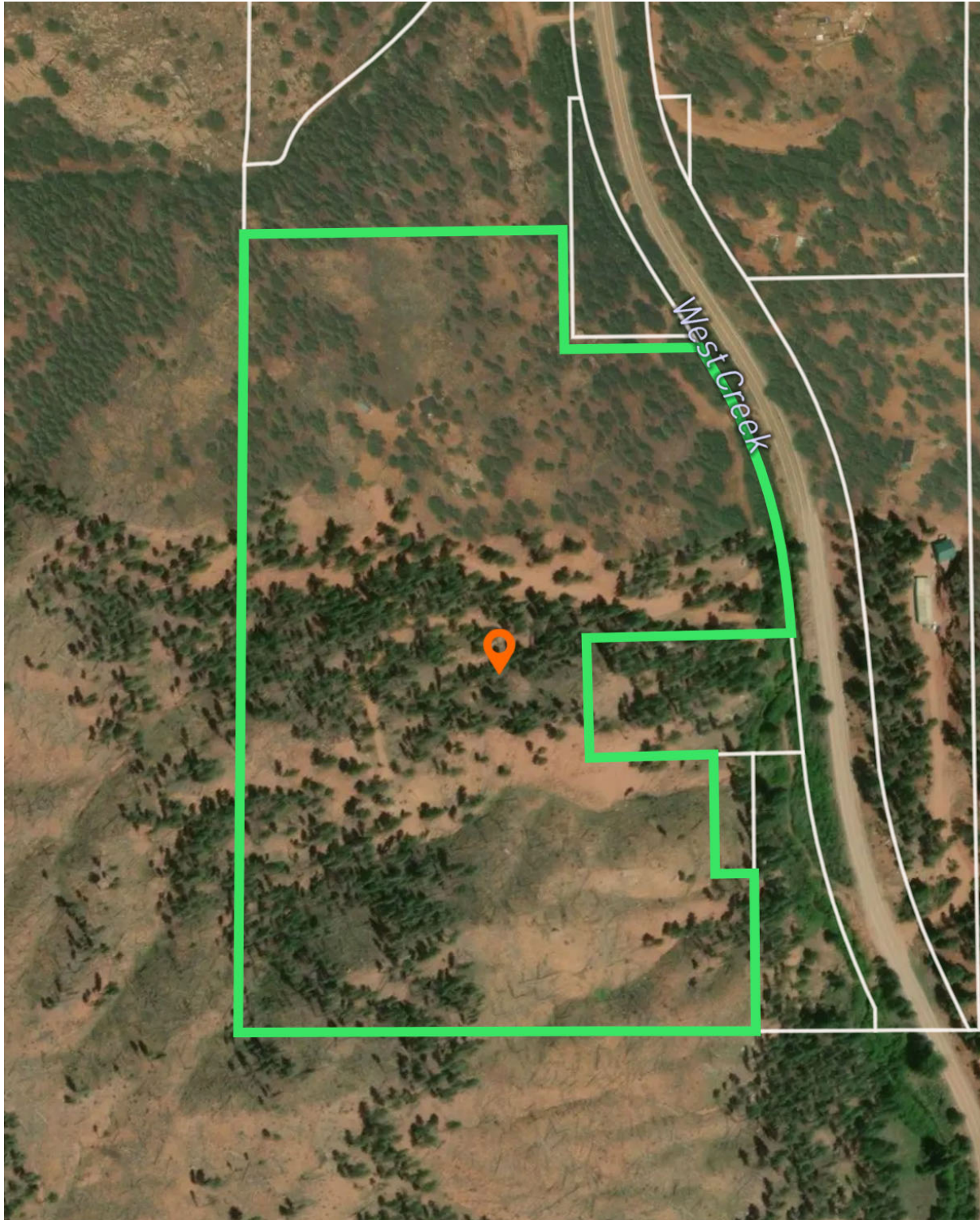
<https://1percentmilehigh.com/>



Scan code  
for more  
property  
details







Disclaimer: Sizes and Dimensions are Approximate, Actual May Vary.



**Jane Pearson**  
720-926-8174  
jane@1percentlists.com  
<https://1percentmilehigh.com/>



Scan code  
for more  
property  
details

