





12985 West 20th Avenue
Golden, CO 80401

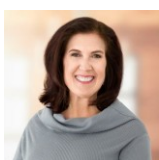


 Townhouse

 1345 SQFT

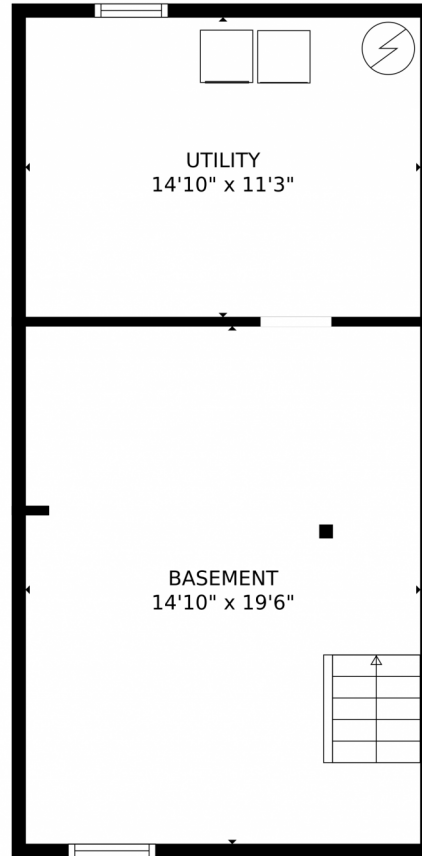
 2 Beds

 1/1 Baths



Phoebe Nason
303-725-2564
phoebenason@remax.net

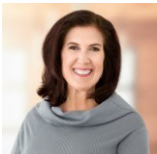




TOTAL: 1217 sq. ft
Below Ground: 294 sq. ft, FLOOR 2: 462 sq. ft, FLOOR 3: 461 sq. ft
EXCLUDED AREAS: UTILITY: 168 sq. ft, PATIO: 166 sq. ft, PORCH: 21 sq. ft
MEASUREMENTS CALCULATED BY V1Photos.com ARE DEEMED HIGHLY RELIABLE BUT NOT GUARANTEED.



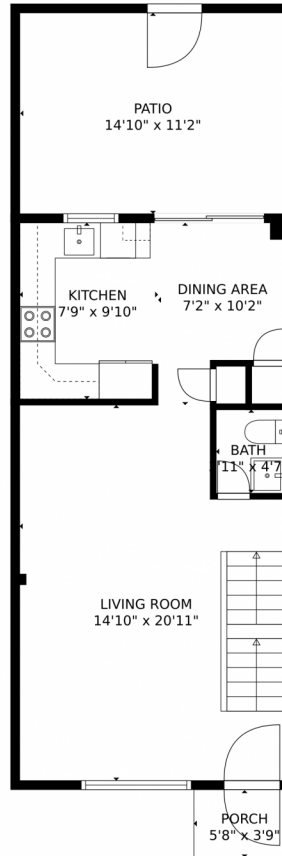
Disclaimer: Sizes and Dimensions are Approximate, Actual May Vary.



Phoebe Nason
303-725-2564
phoebenason@remax.net



12985 West 20th Avenue, Golden, CO 80401 — Main Level



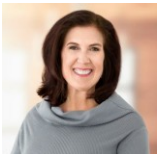
TOTAL: 1217 sq. ft

Below Ground: 294 sq. ft, FLOOR 2: 462 sq. ft, FLOOR 3: 461 sq. ft
EXCLUDED AREAS: UTILITY: 168 sq. ft, PATIO: 166 sq. ft, PORCH: 21 sq. ft

MEASUREMENTS CALCULATED BY V1Photos.com ARE DEEMED HIGHLY RELIABLE BUT NOT GUARANTEED.



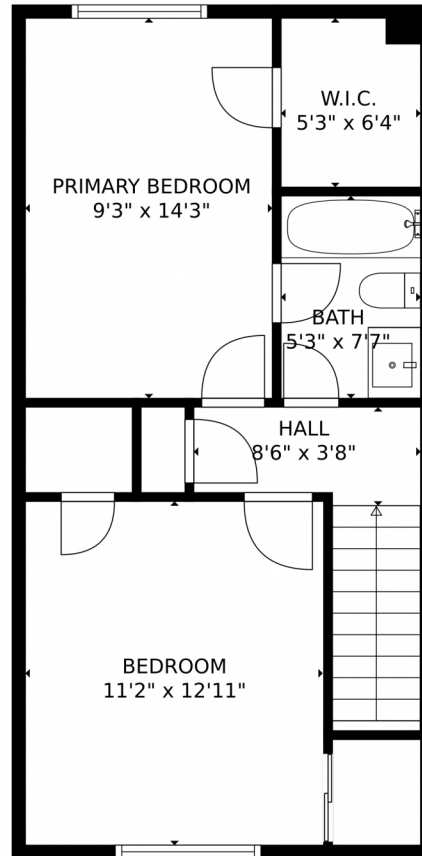
Disclaimer: Sizes and Dimensions are Approximate, Actual May Vary.



Phoebe Nason
303-725-2564
phoebenason@remax.net



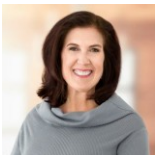
12985 West 20th Avenue, Golden, CO 80401 — Upper Level



TOTAL: 1217 sq. ft
Below Ground: 294 sq. ft, FLOOR 2: 462 sq. ft, FLOOR 3: 461 sq. ft
EXCLUDED AREAS: UTILITY: 168 sq. ft, PATIO: 166 sq. ft, PORCH: 21 sq. ft
MEASUREMENTS CALCULATED BY V1Photos.com ARE DEEMED HIGHLY RELIABLE BUT NOT GUARANTEED.



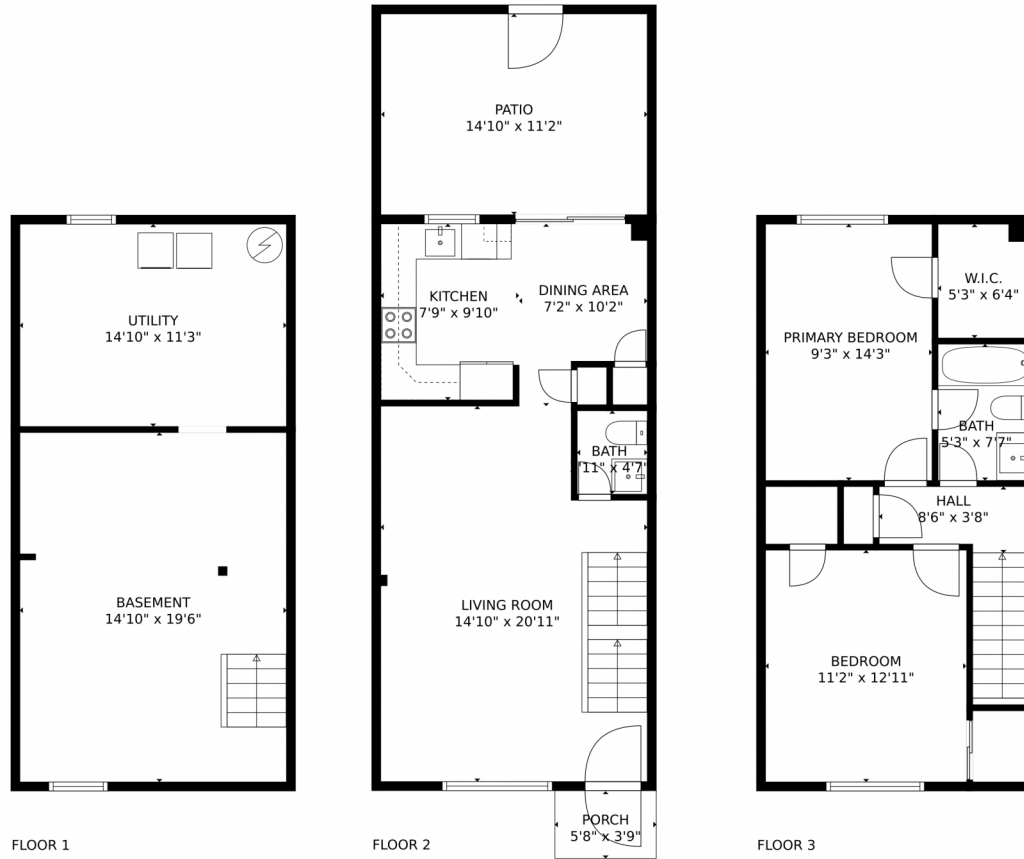
Disclaimer: Sizes and Dimensions are Approximate, Actual May Vary.



Phoebe Nason
303-725-2564
phoebenason@remax.net



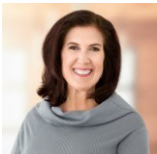
12985 West 20th Avenue, Golden, CO 80401 – All Levels



TOTAL: 1217 sq. ft
Below Ground: 294 sq. ft, FLOOR 2: 462 sq. ft, FLOOR 3: 461 sq. ft
EXCLUDED AREAS: UTILITY: 168 sq. ft, PATIO: 166 sq. ft, PORCH: 21 sq. ft
MEASUREMENTS CALCULATED BY V1Photos.com ARE DEEMED HIGHLY RELIABLE BUT NOT GUARANTEED.



Disclaimer: Sizes and Dimensions are Approximate, Actual May Vary.



Phoebe Nason
303-725-2564
phoebenason@remax.net

